

Nº 963
PROFILE AND DECK PLANS
DIMENSIONS 365'-0"BP x 49'-0"MLD x 27'-3"MLD
SCALE $\frac{1}{8}" = 1'-0"$

LLOYD'S NUMERALS

L x (B+D) 27831
L x D 9946
L/D 13.39

OFFICERS' ACCOMMODATION, ETC.

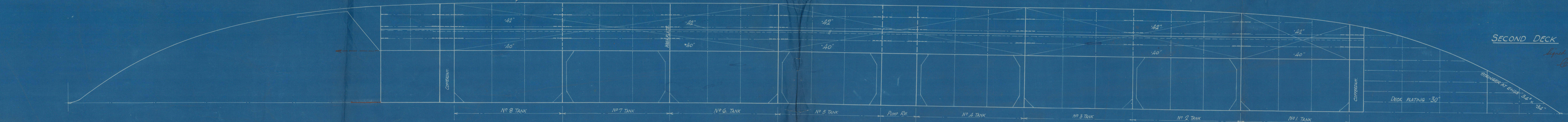
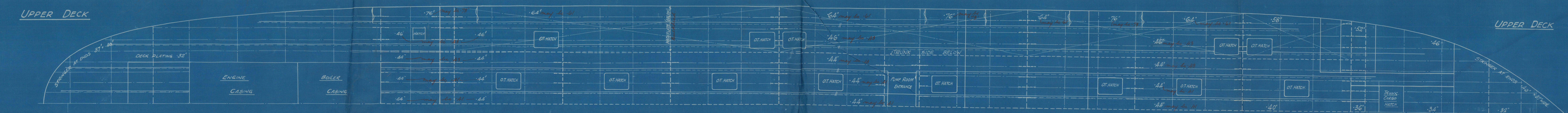
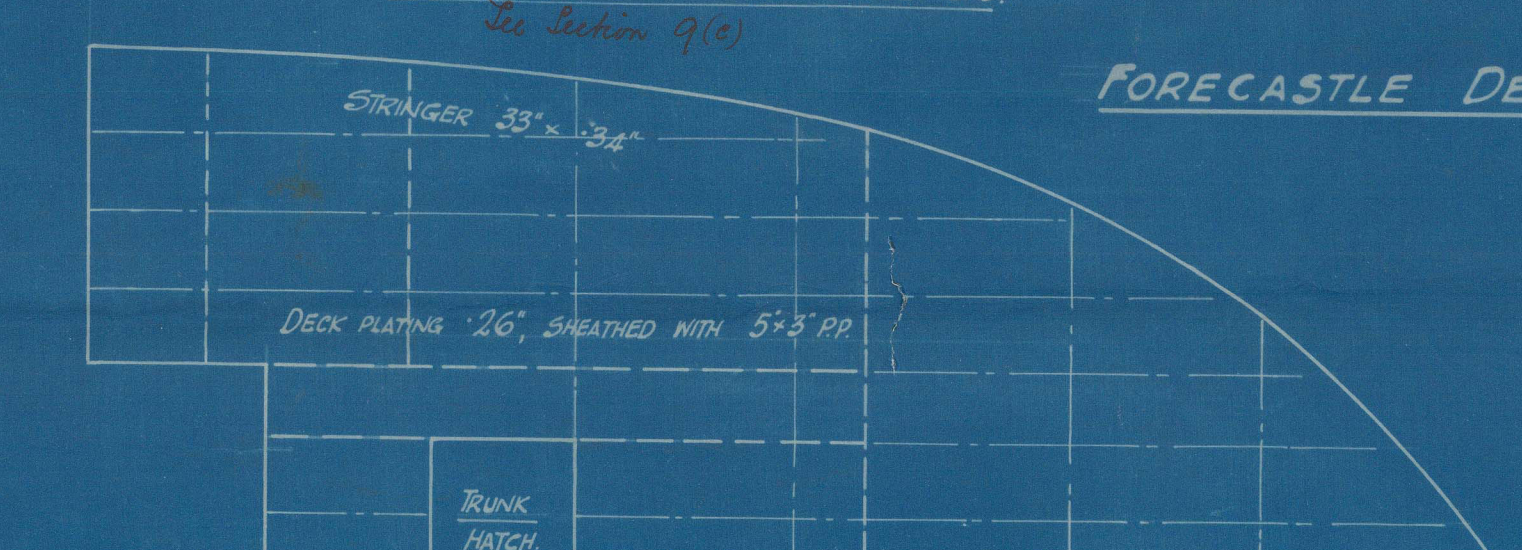
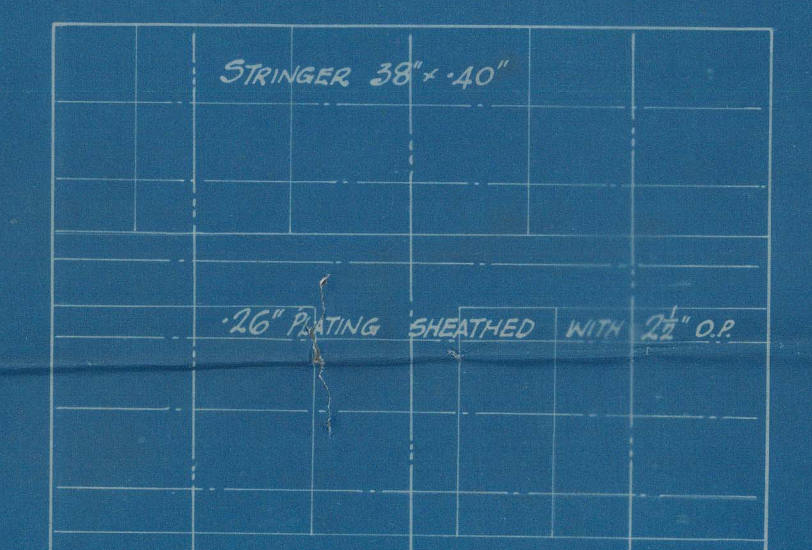
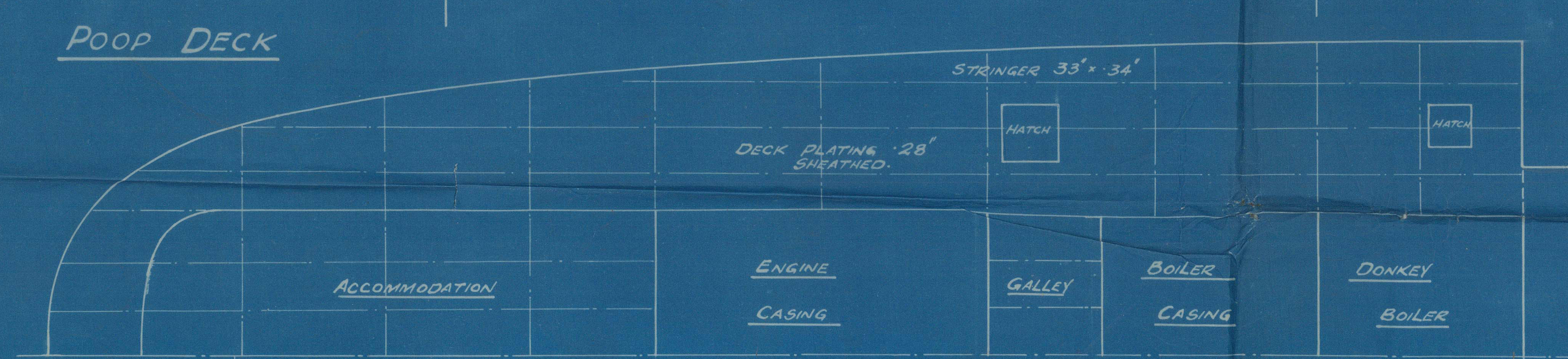
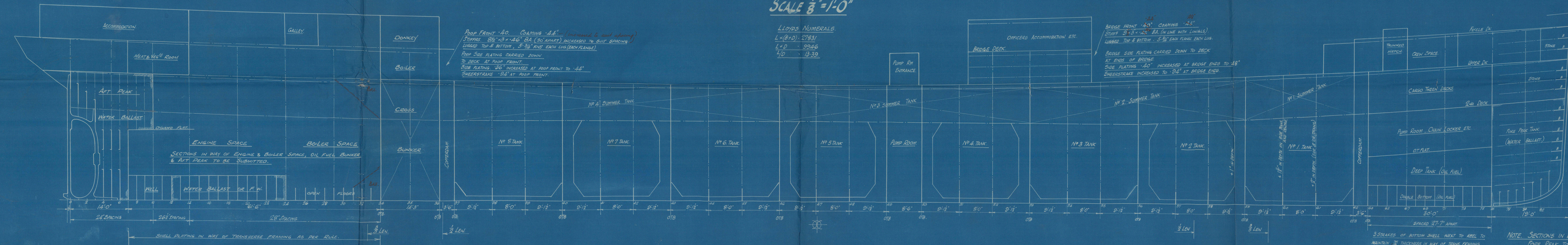
BRIDGE FRONT "43" COAMING "44"
STIFF 3 x 3 x 1/2" BA (IN LINE WITH LINALS)
LUBBER TOP & BOTTOM 5/8" EACH PLANE EACH LVL.

BRIDGE SIDE PLATING CARRIED DOWN TO DECK
AT ENDS OF BRIDGE
SIDE PLATING "40" INCREASED AT BRIDGE ENDS TO "48"
SHEERSTRAKE INCREASED TO "24" AT BRIDGE ENDS

POOP FRONT "40" COAMING "44" (INCREASED 6" AND REINFORCED)
STIFFS 3/2" x 3 1/2" x 1/2" BA (30 ADJUST) INCREASED TO SUIT SPACING
LUBBER TOP & BOTTOM 5/8" EACH LVL (EACH PLANE)
POOP SIDE PLATING CARRIED DOWN
TO DECK AT POOP FRONT
SIDE PLATING "36" INCREASED AT POOP FRONT TO "44"
SHEERSTRAKE "24" AT POOP FRONT

SECTIONS IN WAY OF ENGINE & BOILER SPACE, OIL FUEL BUNKER & ACT PEAK TO BE SUBMITTED.

NOTE: SECTIONS IN WAY OF FORE HOLD AND FORE PEAK TO BE SUBMITTED



111130-0191 1/2

2

Palmers

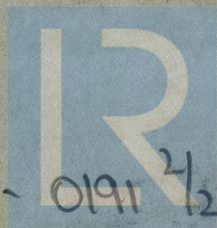
963

Profile & Deck Plans

S.S. "British Industry"
NEWCASTLE ON TYNE.

Report No. 81426.

RETAIR



© 2021

Lloyd's Register
Foundation

W1630-0191 2/2

Palmer's 963. Ship.

W1630-0191 $\frac{2}{2}$



© 2021

Lloyd's Register
Foundation

FOR ENCLOSURE TO

1/5/26

Lloyd's Register of Shipping

From

newcastle
PALMERS S. & I. CO., Ltd.,

Shipyard Department,

JARROW-ON-TYNE.

(E.W.M.O. NO. 19)

W1630-0191 1/2