

5/11/15
LOUISIANA
1915

STEEL STEAM COASTER YARD N° 414

PROFILE & DECK PLANS

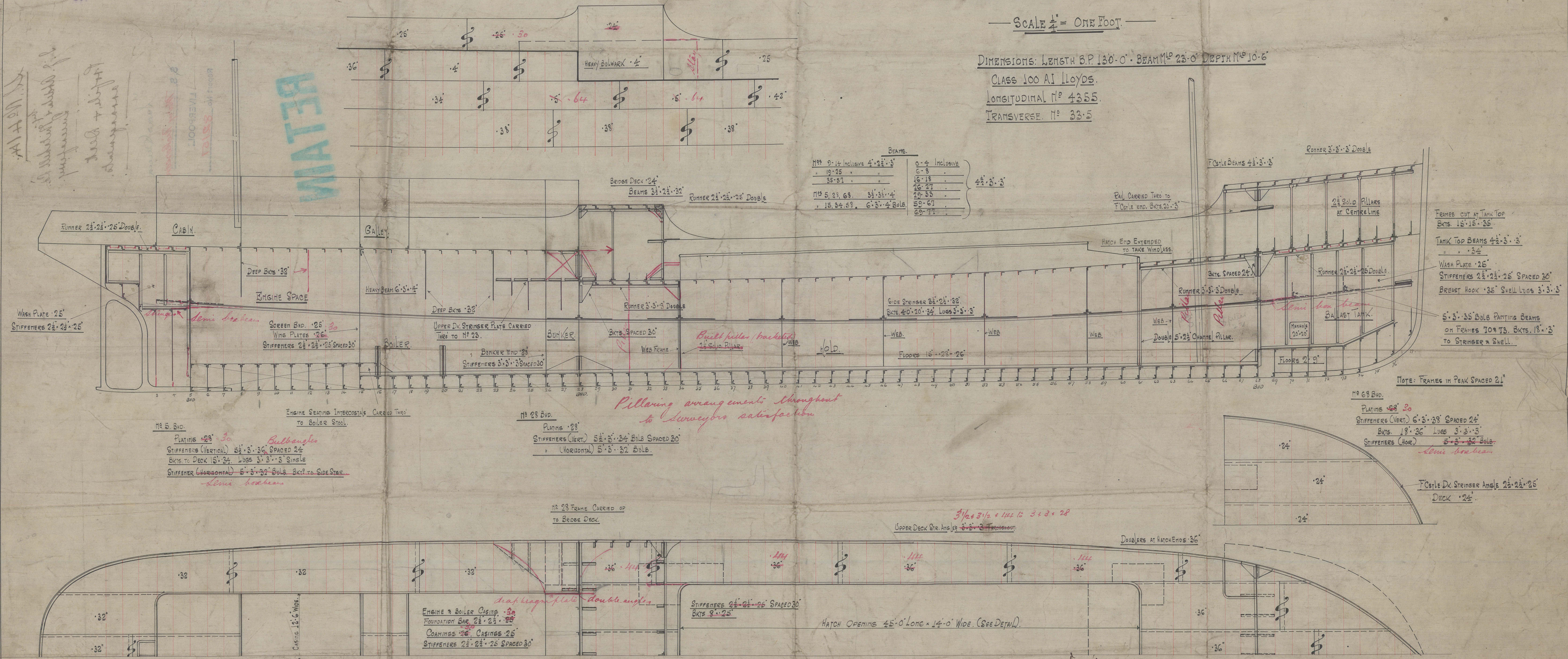
SCALE 1/4" = ONE FOOT

DIMENSIONS: LENGTH B.P. 130'-0" BEAM M° 23'-0" DEPTH M° 10'-6"

CLASS 100 A1 LLOYDS.

LONGITUDINAL N° 4355.

TRANSVERSE N° 335



BEAMS	
N° 9-14 Inclusive 4' x 3 1/2' x 3'	0-4 Inclusive
19-25	6-8
35-51	16-18
	26-27
N° 5, 23, 69	3 1/2' x 3 1/2' x 4'
15, 24, 53	6' x 3' x 4' BULB
	59-67
	68-74

FRAMES CUT AT TANK TOP
BKT. 15' x 15' x 35'
TANK TOP BEAMS 4 1/2' x 3' x 3'
WASH PLATE 25'
STIFFENERS 2 1/2' x 2 1/2' x 25' SPACED 20'
BREAST HOOK 35' SHELL LUGS 3' x 3' x 3'
5' x 3' x 35' BULB PARTING BEAMS
ON FRAMES TO T3. BKT. 18' x 3'
TO STRINGER & SHELL

NOTE: FRAMES IN PEAK SPACED 21'

N° 68 BVD.
PLATING 28' x 30'
STIFFENERS (VERT) 6' x 3' x 38' SPACED 24'
BKT. 18' x 36' LUGS 3' x 3' x 3'
STIFFENERS (HOR) 5' x 3' x 32' BULB

F-Cable DX. STRINGER ANGLE 2 1/2' x 2 1/2' x 25'
DECK 24'

Oct. 16, 1915

As later approved
per modified
dated 18-12-20

4. 11. 15

ISAAC J. ABDELA & MITCHELL LTD
SHIPBUILDERS & ENGINEERS
QUEEN'S FERRY,
CHESHIRE.

S.S. No 414.

by
J. J. Abdela & Mitchell Ltd.
Lucena ferry.

Profile, & Deck
arrangements.

Snow Queen

S. S. Mary Nickerson

LIVERPOOL:

Report No. 82157

RETAIN



© 2021

Lloyd's Register
Foundation

W16S3-0083