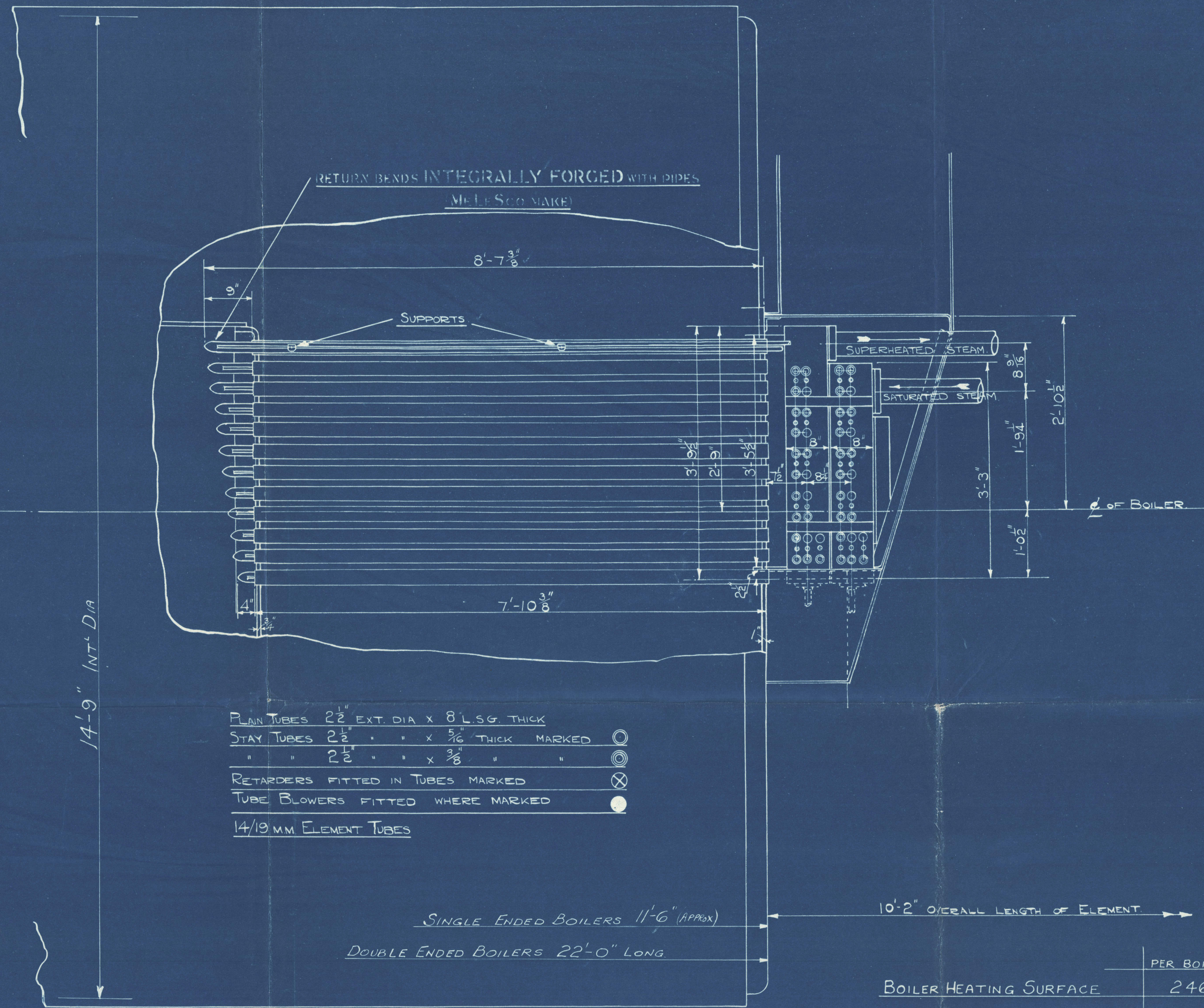
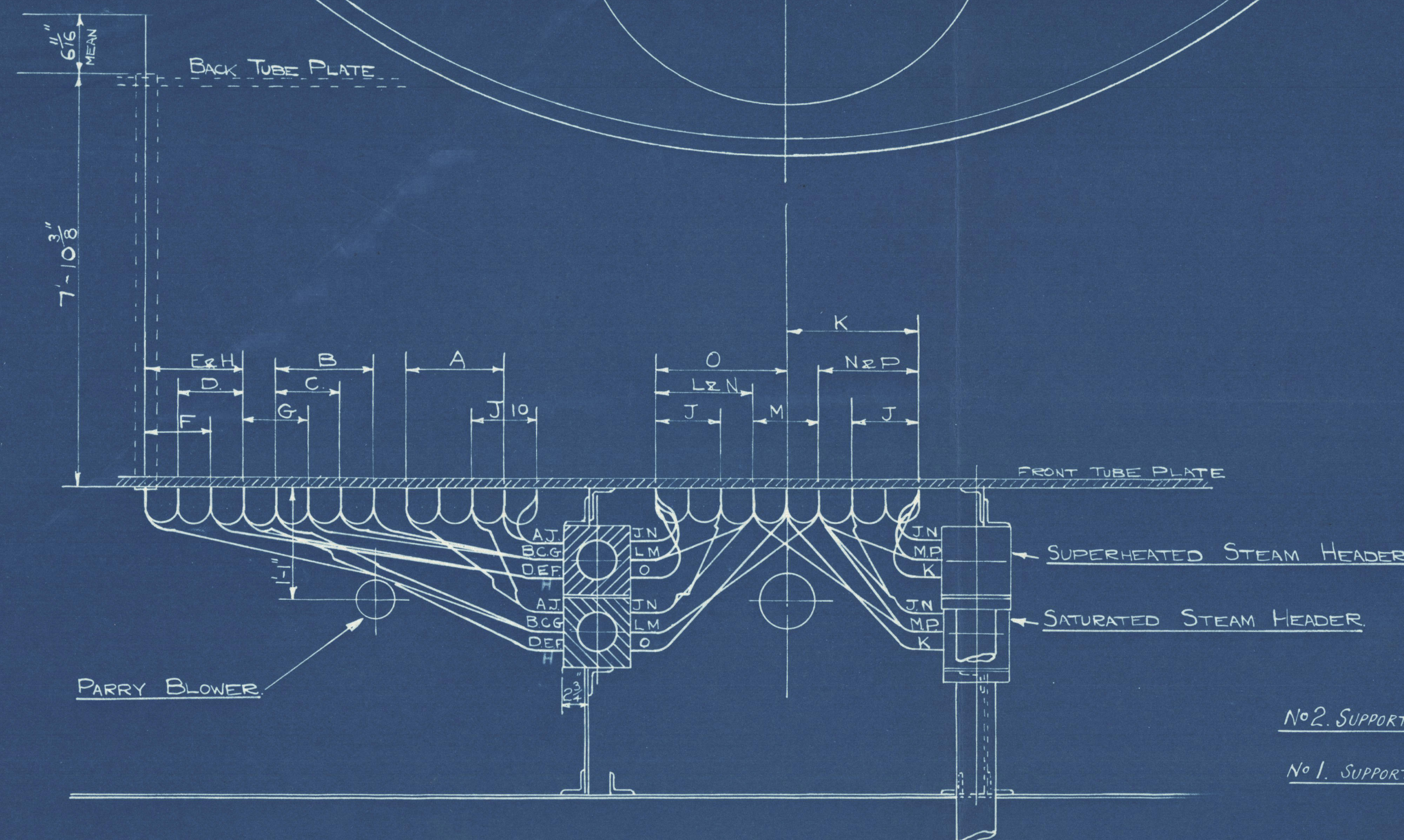
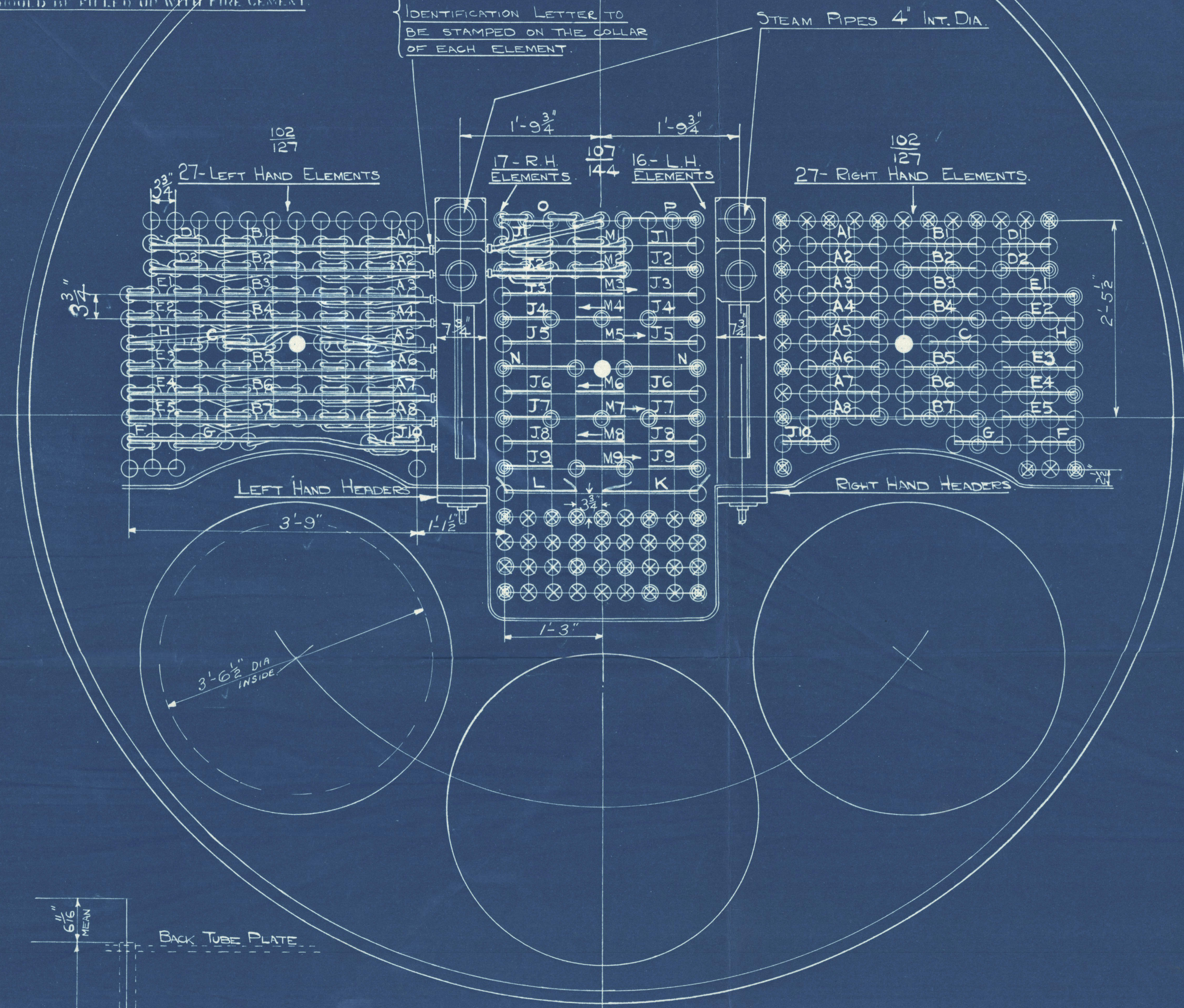


BEFORE THE UNIT ARE SCREWED UP THE TUBES WILL
SHOULD BE THOROUGHLY CHECKED WITH A VENTURINE
OR SIMILAR TEST FLUID ON - (GAS PROOF)

AFTER ALL NUTS HAVE BEEN THOROUGHLY TIGHTENED
UP UNDER STEAM OR FLUID THE OPEN ENDS OF NUTS
SHOULD BE FILLED UP WITH FIRE CEMENT

A METAL TAG TO BE ATTACHED
TO EACH ELEMENT BEARING IDENTIFICATION
LETTER TO
BE STAMPED ON THE COLLAR
OF EACH ELEMENT



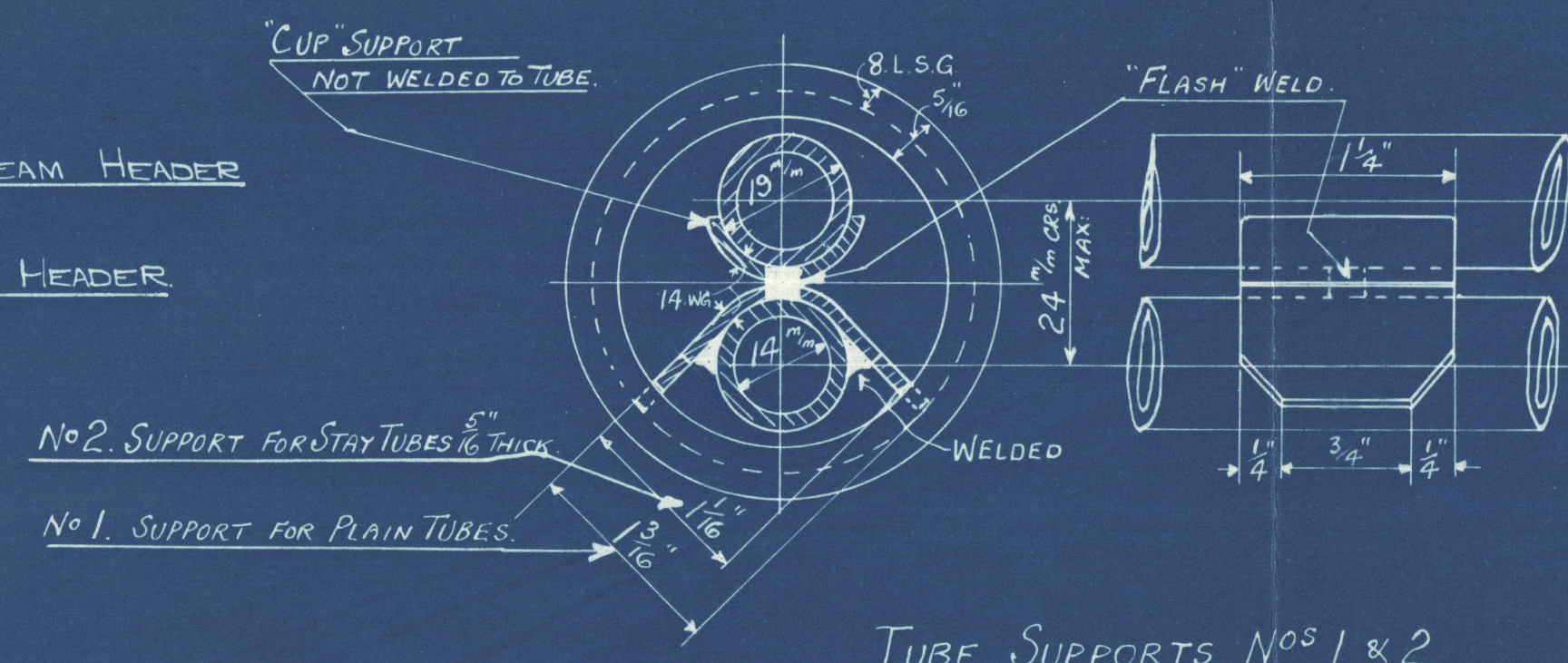
PLAIN TUBES 2 1/2" EXT. DIA X 8' LSG. THICK
STAY TUBES 2 1/2" " " X 5/16" THICK MARKED
" " 2 1/2" " " X 3/8" " "
RETARDERS FITTED IN TUBES MARKED
TUBE BLOWERS FITTED WHERE MARKED
14/19 MM ELEMENT TUBES

SINGLE ENDED BOILERS 11'-6" (APPROX)
DOUBLE ENDED BOILERS 22'-0" LONG

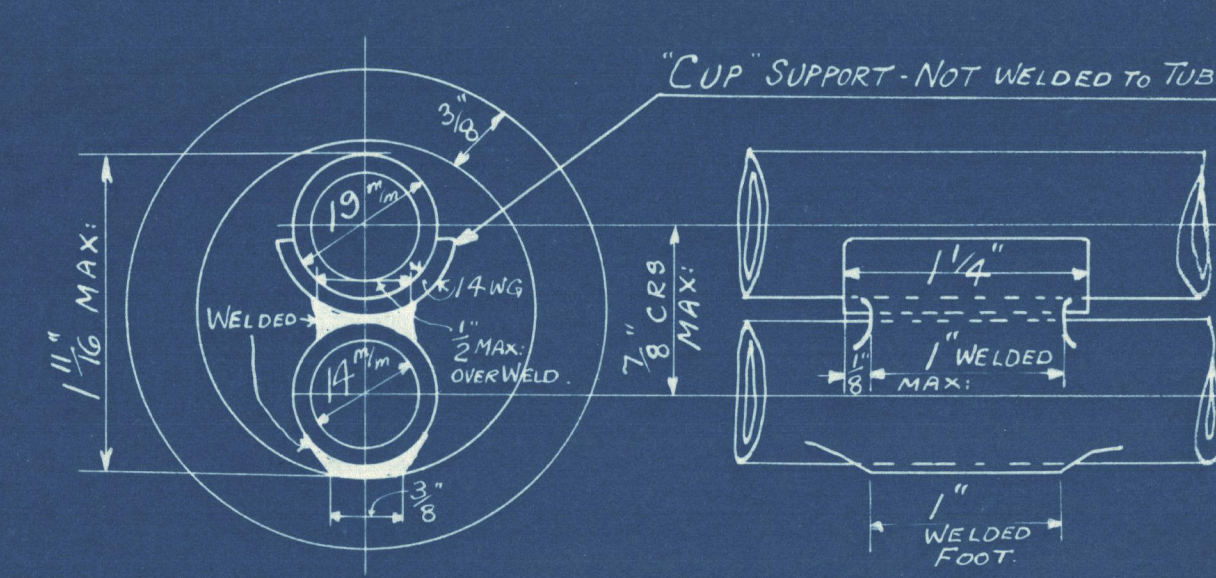
7 - DOUBLE END BOILERS FITTED THUS
2 - SINGLE " " " "

	PER BOILER END	16 BOILER ENDS
BOILER HEATING SURFACE	2466 #	39456 #
SUPERHEATER " " "	1070 #	17120 #
GRATE AREA	62.5 #	1000 #

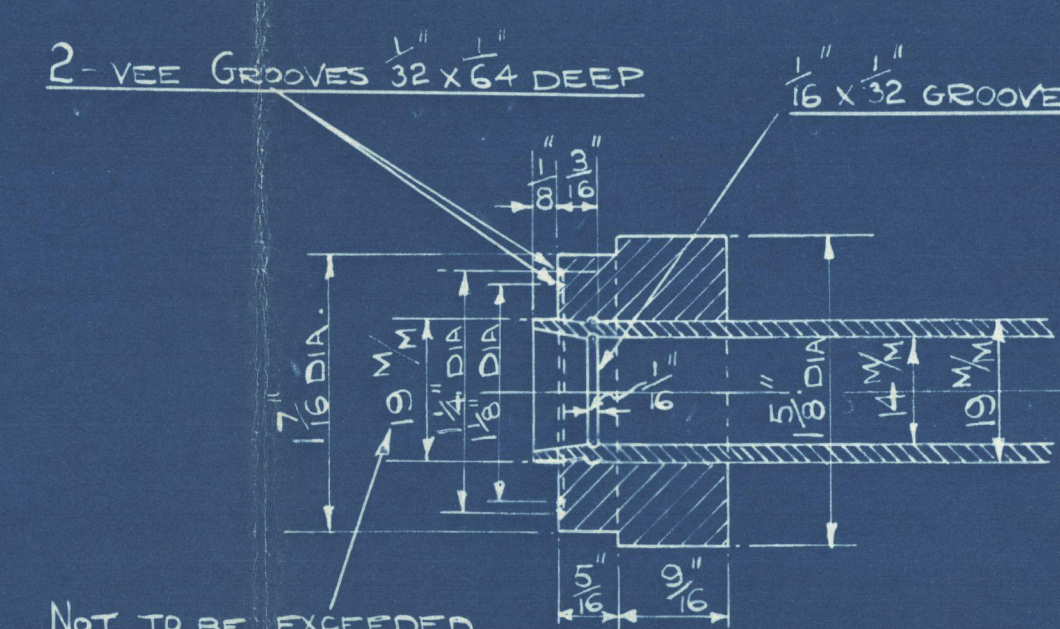
WORKING PRESSURE = 210 LBS PER SQ INCH.
TO PASS. BOARD OF TRADE - AND LLOYDS SURVEY.
TEST PRESSURE = 630 LBS PER SQ INCH.



TUBE SUPPORTS NOS 1 & 2



TUBE SUPPORT "X"
FOR STAY TUBES 3/8" THICK - ONLY



DETAIL OF ELEMENT COLLAR

SCALE
1" = 1 FT
DWN TONE

ARRANGEMENT TRACED FROM N.E.M.C. DPG No 1099
BUT SUPPORTS MODIFIED & 2 ELTS RE-LETTERED THUS. E3. MADE H. & J1. MADE J10.

THE SUPERHEATER CO LTD
BUSH HOUSE LONDON W C 2

TITLE ARRANGEMENT OF
SUPERHEATER

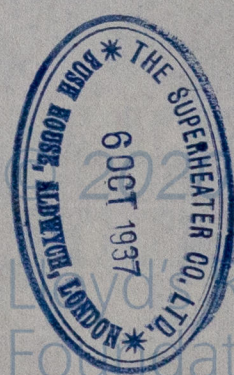
REF CKD
12128 26 4/10/37

DRAWING NO
MN 11570

SS "EMPRESS OF CANADA"

WLB6-0050

W166-0050



Lloyd's Register
Foundation