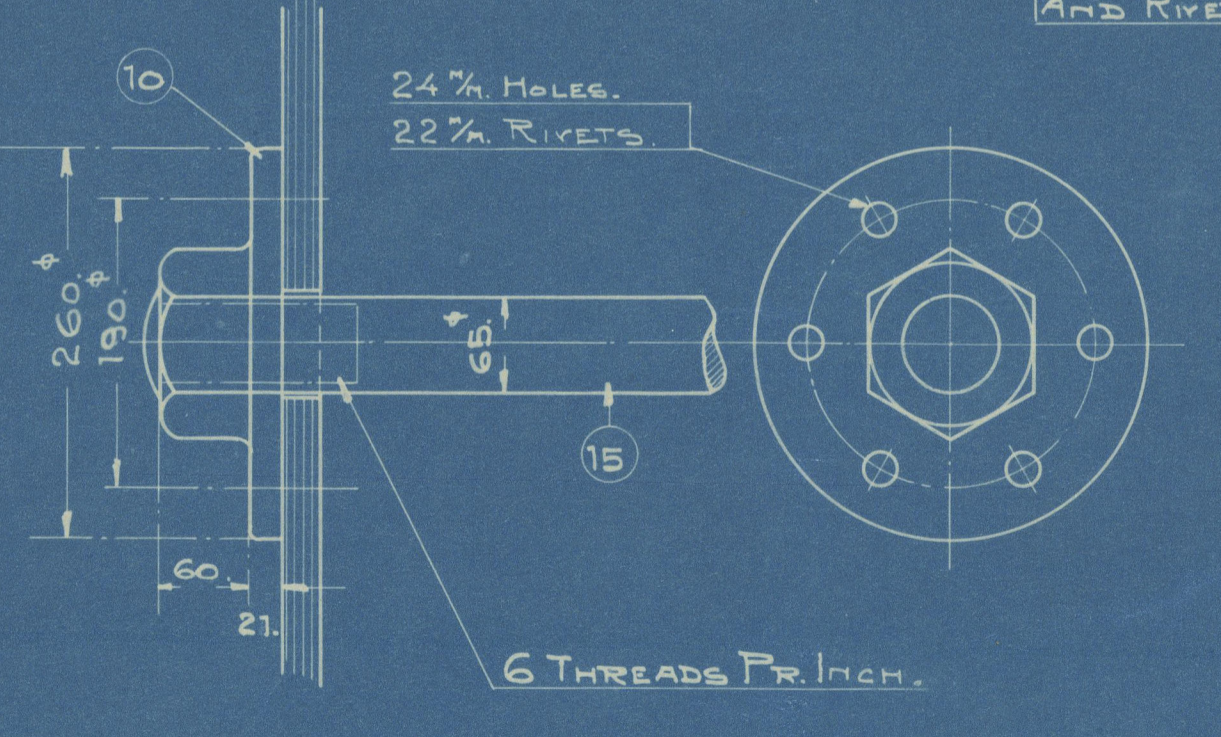
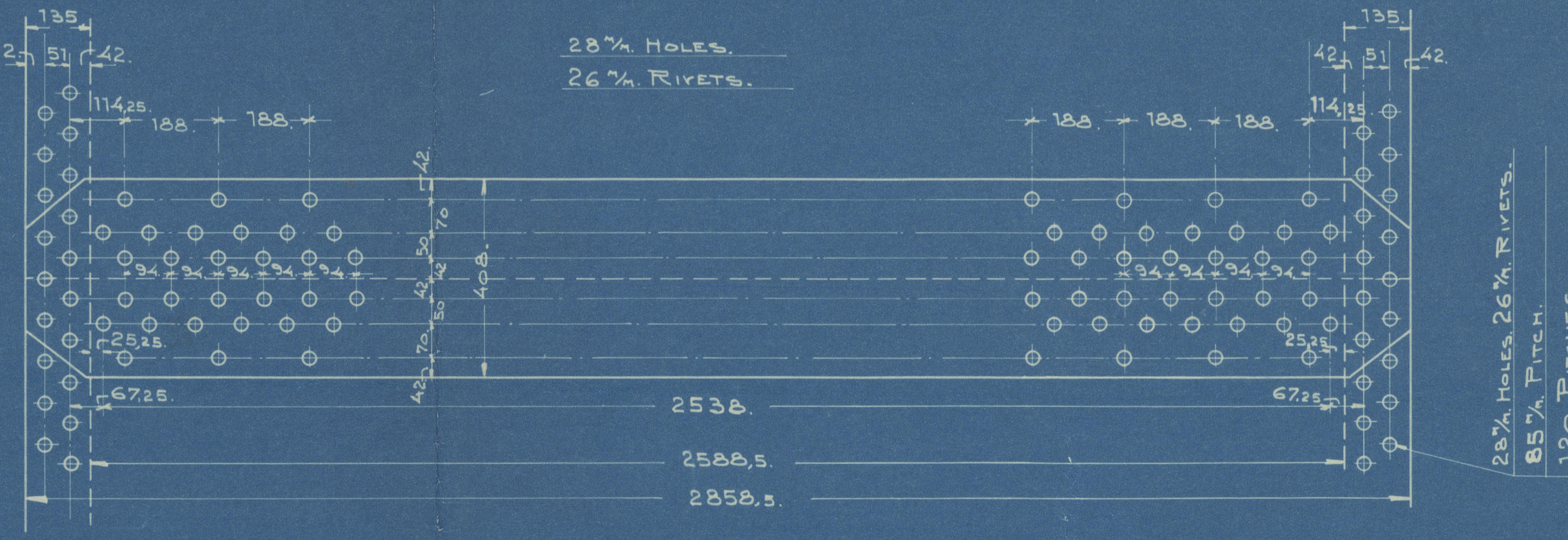
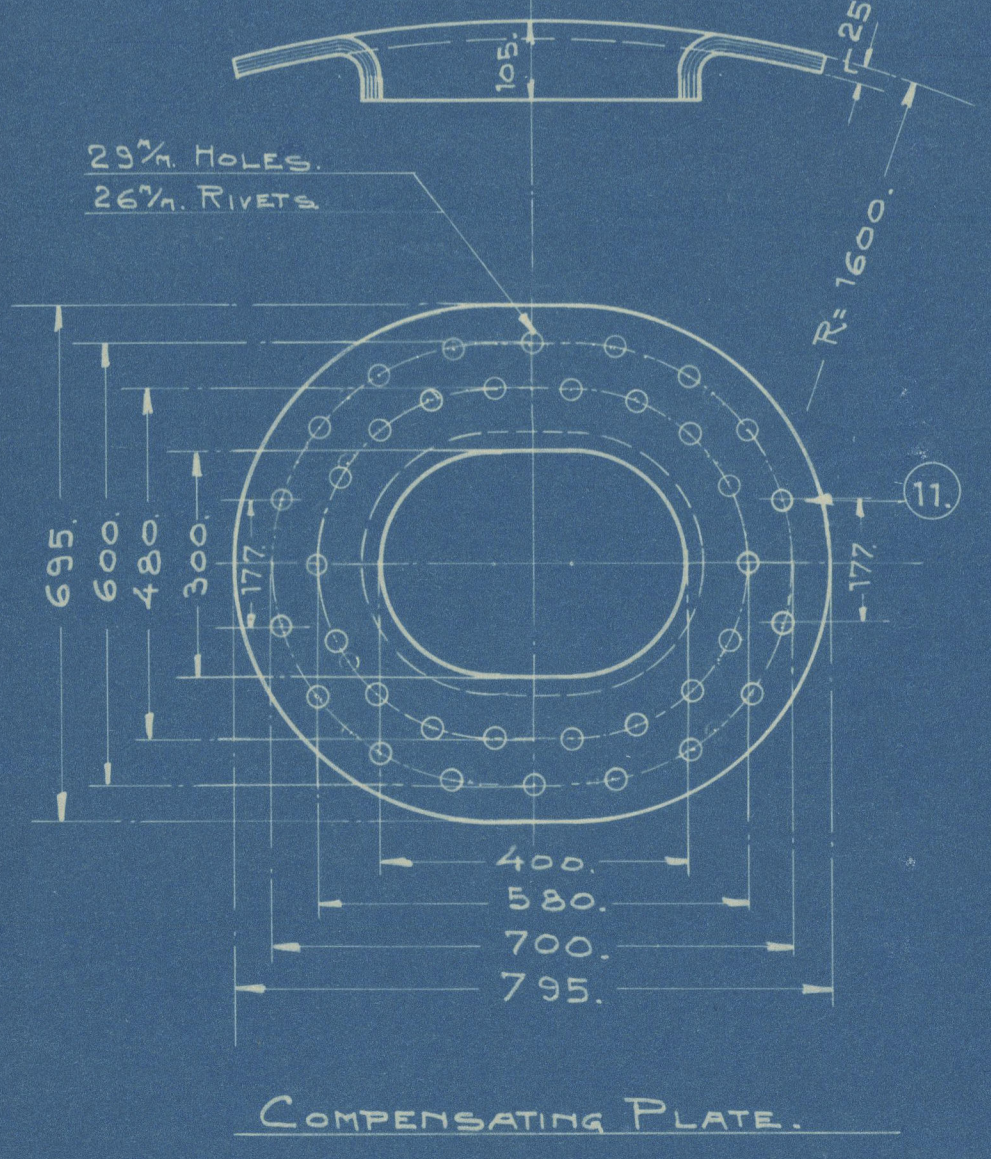


MARK.	NAME.	THICKNESS IN TENSILE STRENGTH IN %	MAX.	MIN.	TIGHTENING %	NUMBER	REMARKS.
1	SHELL PLATES.	25.	28.	32	20.	1.	
2	OUTSIDE-BUTT-STRAPS.	19	28	32	20	2	
3	INSIDE " "	22	28	32	20	2	
4	FRONT TUBE-PLATE.	26	26	30	23	1	
5	BACK-PLATE.	22.5	26	30	23	1	
6	"-TUBE-PLATE.	23.5	26	30	23	2	ONE RIGHT ONE LEFT HAND.
7	SIDE AND TOP PLATES IN FIREBOXES.	16.5	26	30	23	2	ONE RIGHT ONE LEFT HAND.
8	BOTTOM-PLATE IN DO.	17	26	30	23	2	ONE RIGHT ONE LEFT HAND.
9	BACK- " " "	18.5	26	30	23	2	ONE RIGHT ONE LEFT HAND.
10	WASHERS.	21	26	30	23	18	
11	STIFFENING-PLATE FOR MANHOLE.	25	26	30	23	1	
12	FURNACES.	12.5	26	30	23	2	
13	GIRDERS.	18	28	32	20	16	
14	STIFFENING-PLATE FOR FRONT TUBE-PLATE.	15	28	32	20	1	
15	LONGITUDINAL STAYS.	65	28	32	20	10	6 THREADS PER INCH.
16	SCREW STAYS.	50	26	30	23	34	" " " "
17	" " " "	50	26	30	23	9	" " " "
18	" " " "	38	26	30	23	9	" " " "
19	CROWN STAYS.	38	26	30	23	9	" " " "
20	TUBES.	83					2201 TOTAL LENGTH.
21	STAY-TUBES.	83					9 THREADS PER INCH.
22	RIVETS.	26	30	25			



	M <sup>2</sup> .	FEET <sup>2</sup> .
HEATING SURFACE IN 172 TUBES.	95.50	1026.
" " " 2 FURNACES.	5.95	64.
" " " 2 FIREBOXES.	7.31	78.6
TOTAL HEATING SURFACE	108.76	1168.6
HEATING SURFACE : 35		
STEAM ROOM : 3.3 M <sup>2</sup> .		
GRATE SURFACE		
WORKING PRESSURE.	14.	200.
HYDRAULIC TEST.	24.5	350.
THE BOILER IS TO BE WORKED WITH NATURAL DRAUGHT.		

HELSINKIINEN VARS A. B.  
BOILER.  
HEATING SURFACE = 95.5 M<sup>2</sup>.  
WORKING PRESSURE = 14 Kg/cm<sup>2</sup>.  
LOYD'S TEST  
110.  
1:5  
27.1.26  
R  
Foundation  
W99-0114 R.360

Altered plan in accordance  
with amendment on approved plan.

s/s. Neva.

Helsingborgs Varfs & Leksnings Aktiebolag

s/s No 46.

Main Boilers.

Hog Rpt No 275

W199-0114



© 2021

Lloyd's Register  
Foundation