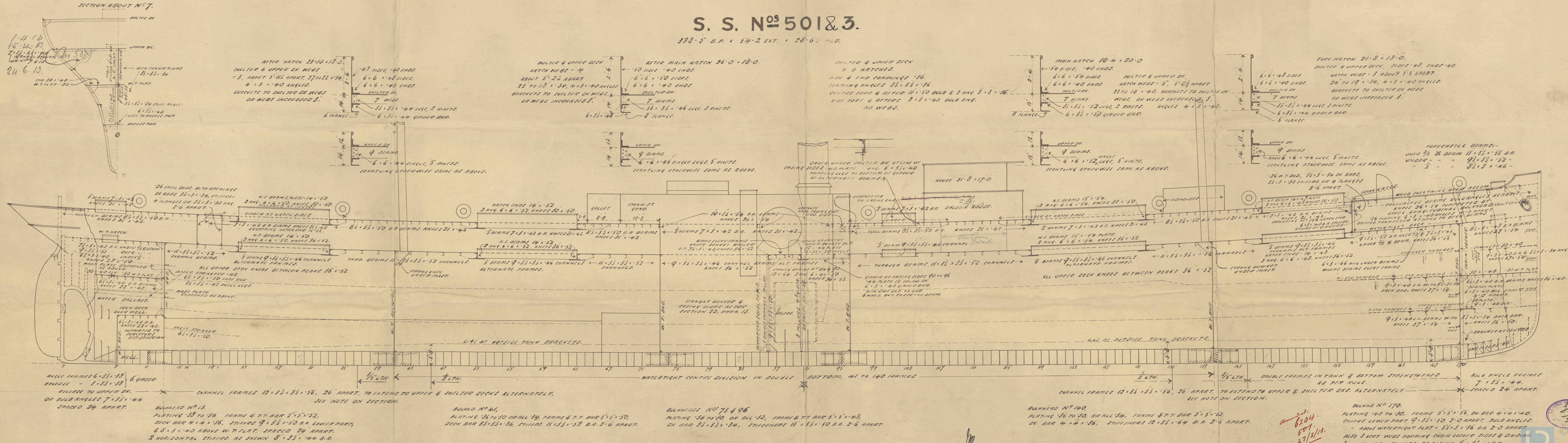


# S. S. N<sup>o</sup> 501 & 3.

388-5 B.P. x 54-2 EXT. x 28-6 MLD.



1.4.13

am 2204.  
501.  
27/3/13.



SUNDERLAND

MESS<sup>rs</sup> J L. THOMPSON & SONS

AMENDED PROFILE

No 501 & 503

501 - SS "MOTTISFONT"

SLD REPORT No 25955

N. N. NELLIE



503

SS BATSFORD

SLD RPT No 26017

W200-0145



© 2019

Lloyd's Register  
Foundation