

BOILER

SCALE: 1 INCH TO ONE FOOT

WRITTEN DIMENSIONS ONLY TO BE TAKEN.

WORKING PRESSURE - 180 LBS PER SQ. INCH.

31/7/18

TOTAL HEATING SURFACE WITHOUT
FRONT TUBE PLATE 4960
5000

HEATING SURFACE TUBES 6.1
HEATING SURFACE TUBES 6.1
HEATING SURFACE TUBES 6.1

TENSILE STRENGTH OF SHELL PLATES & BUTT STRAPS
28 TO 32 TONS PER SQ. INCH.
- II - GIRDER PLATES & LONGITUDINAL STAYS
28 TO 32 TONS PER SQ. INCH.

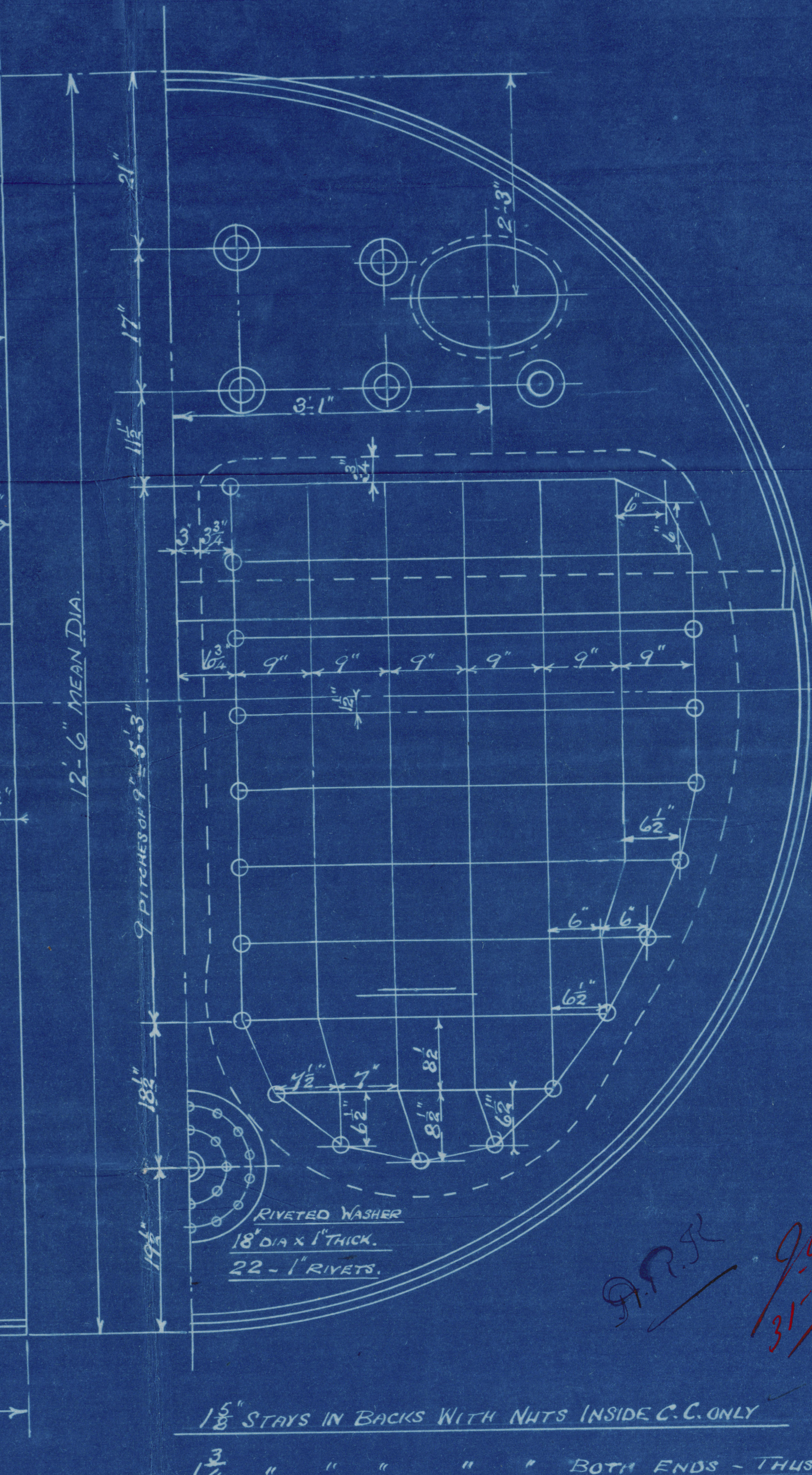
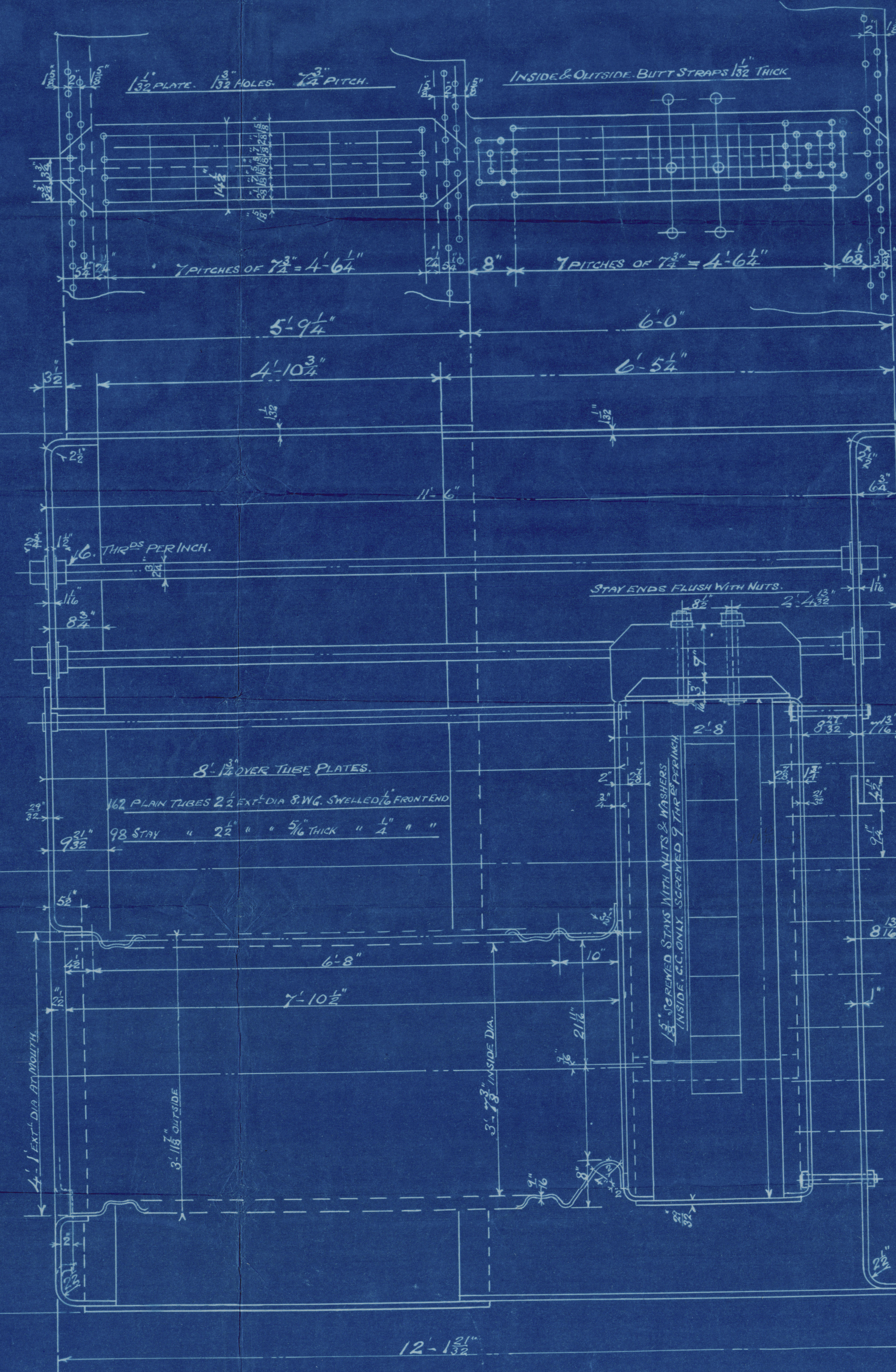
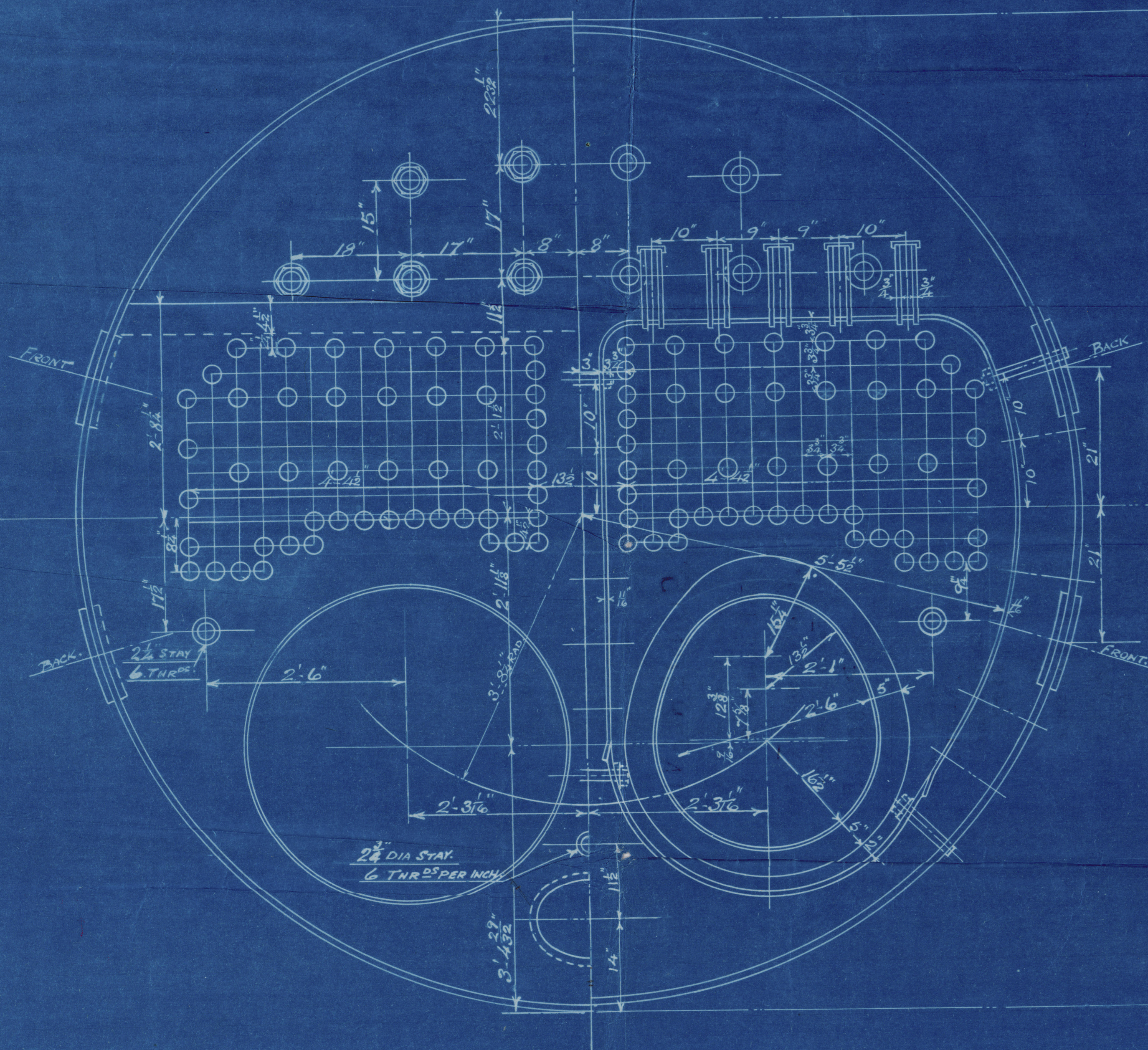
ALL OTHER PLATES, STAYS & RIVETS 26 TO 30 " " " "

ALL PLATES, STAYS & RIVETS STEEL

ALL TUBES WROG. IRON

ALL RIVET HOLES DRILLED IN PLACE

RIVETING HYDRAULIC.



18\"/>

N° S. 2149 - 110
N° OFF 3 - 110



SUNDERLAND.

RICHARDSONS WESTGARTH & CO. L^{td}.

(3) BOILERS N^o 2149.

C. S. STANDARD TYPE.

FORCED DRAUGHT.

W. P. 180 LBS. ^{sq}

~~For~~

SWAN. HUNTER & WIGHAM. RICHARDSON'S

N^o 1111.

Centre & Starboard

No. 3547

LLOYD'S TEST

360 lbs.

15-3-19 E.W.R.

Port

No. 3548

LLOYD'S TEST

360 lbs.

19-3-19 E.W.R.

Polo

SUNDERLAND RPT. NO. 27514



© 2021

Lloyd's Register
Foundation

W208-0170