

THE NORTH EASTERN MARINE ENGINEERING CO. LD.

WALLSEND-ON-TYNE

BOILER.

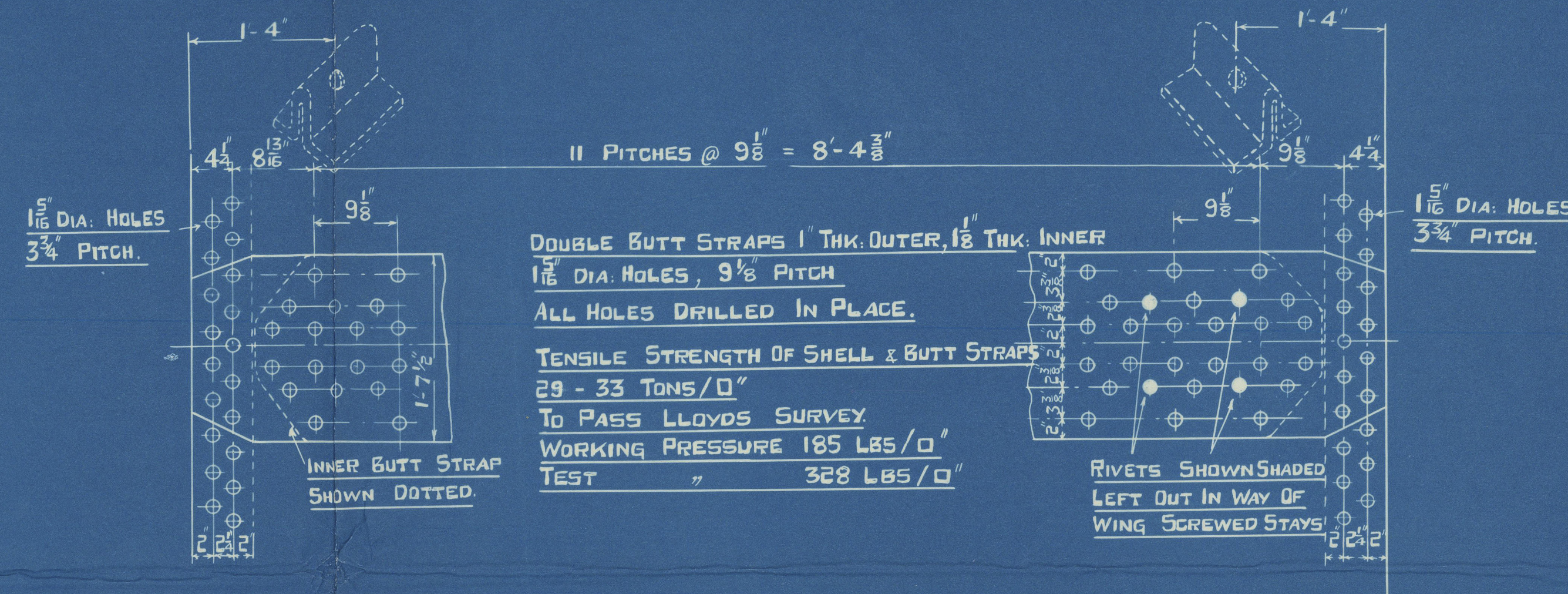
SCALE: 1 INCH = 1 FOOT

$$\text{PLATE \%} = \frac{(9.125 - 1.3125) \times 100}{9.125} = 85.6 \%$$

$$\text{RIVET \%} = \frac{100 \times 23 \times 1.353 \times 5 \times 1.875}{29 \times 9.125 \times 1.265} = 87 \%$$

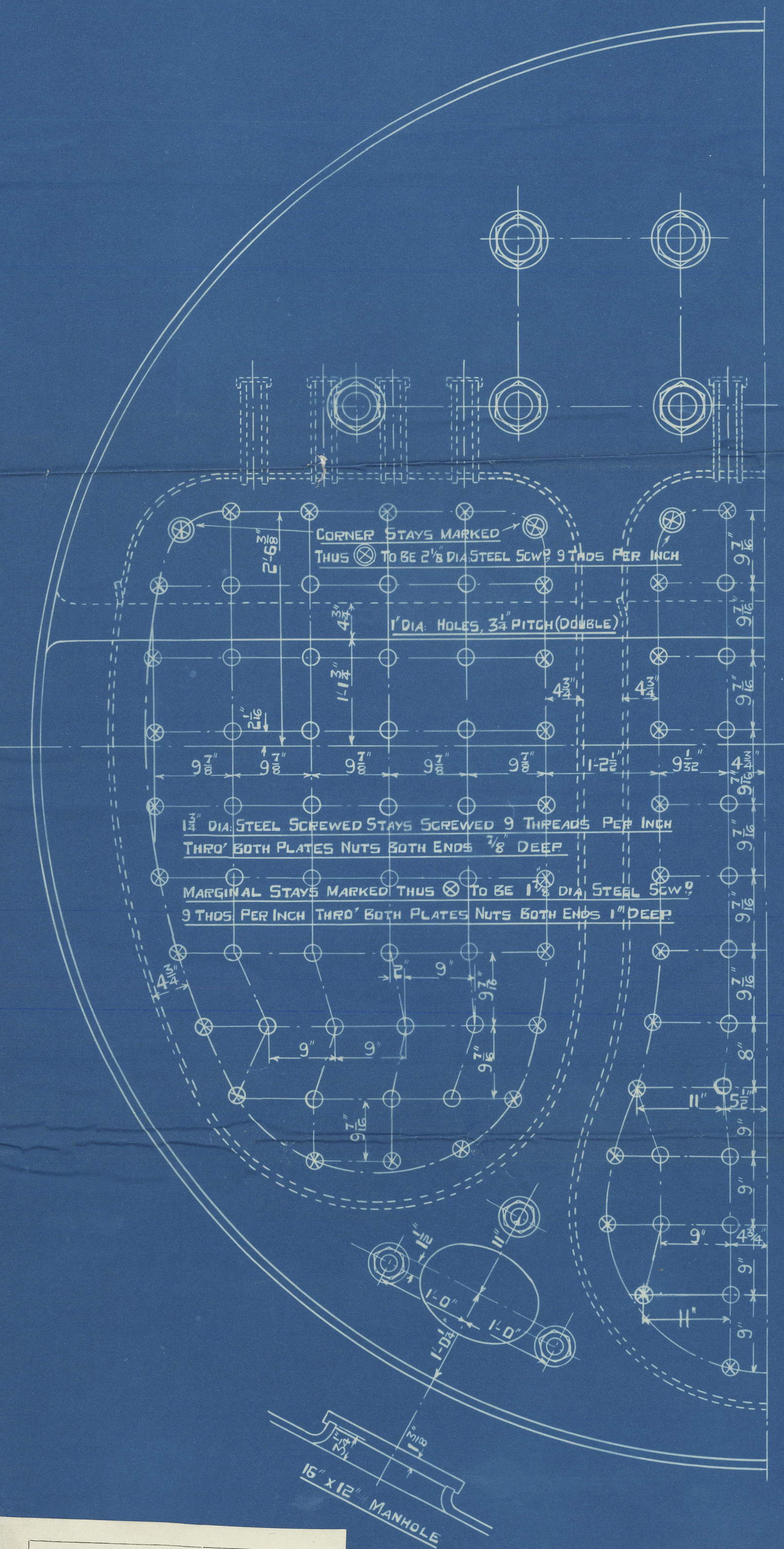
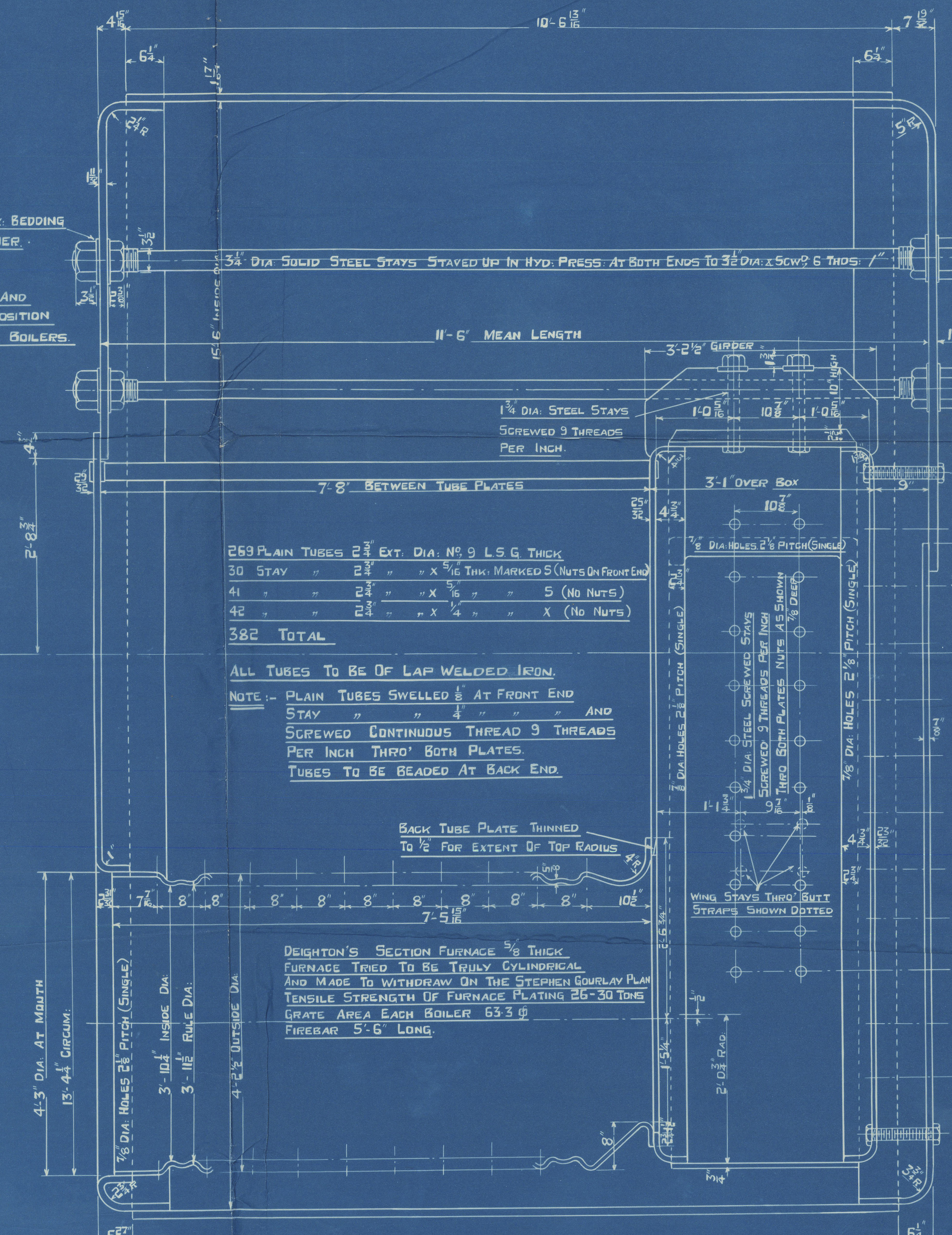
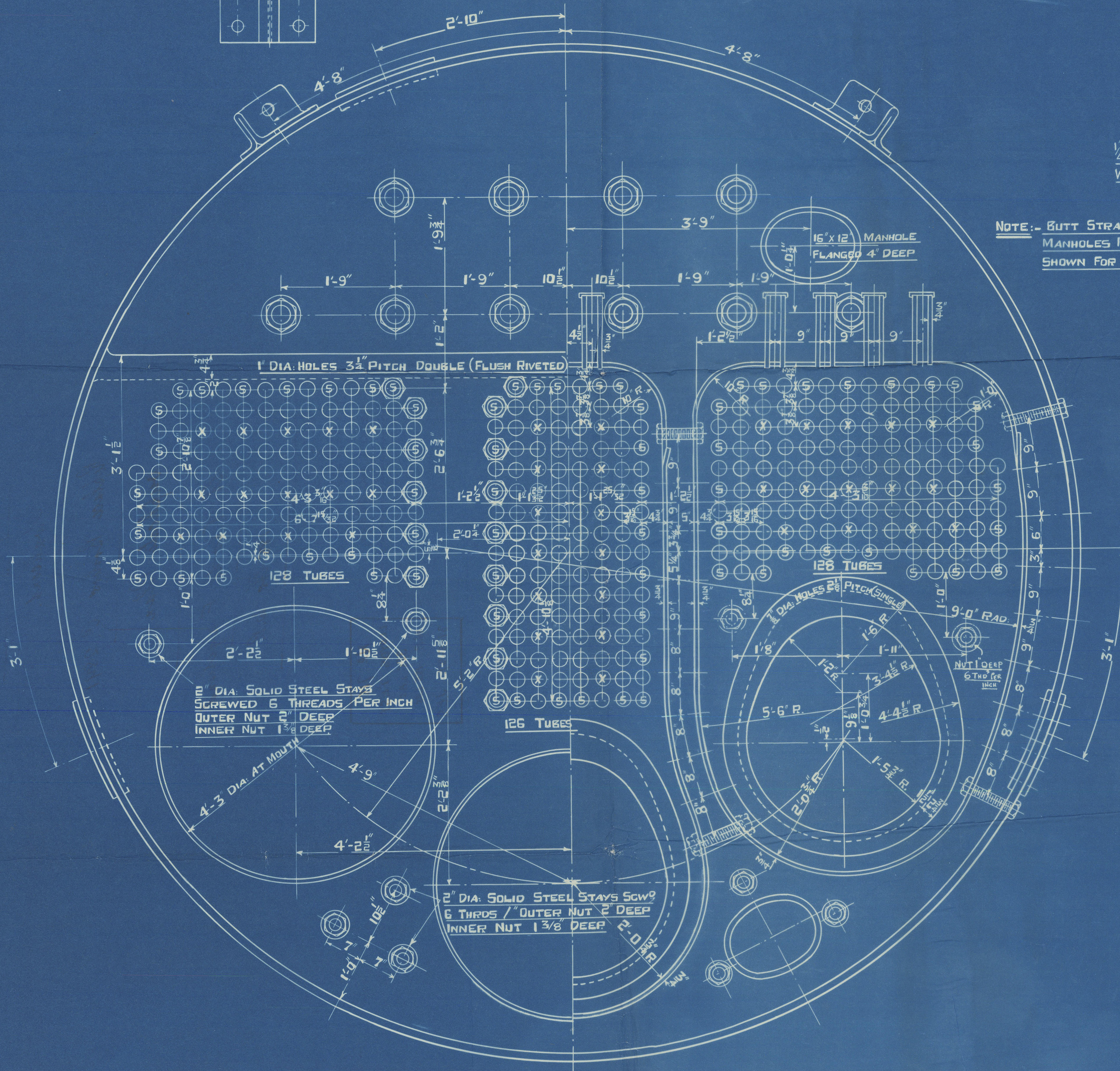
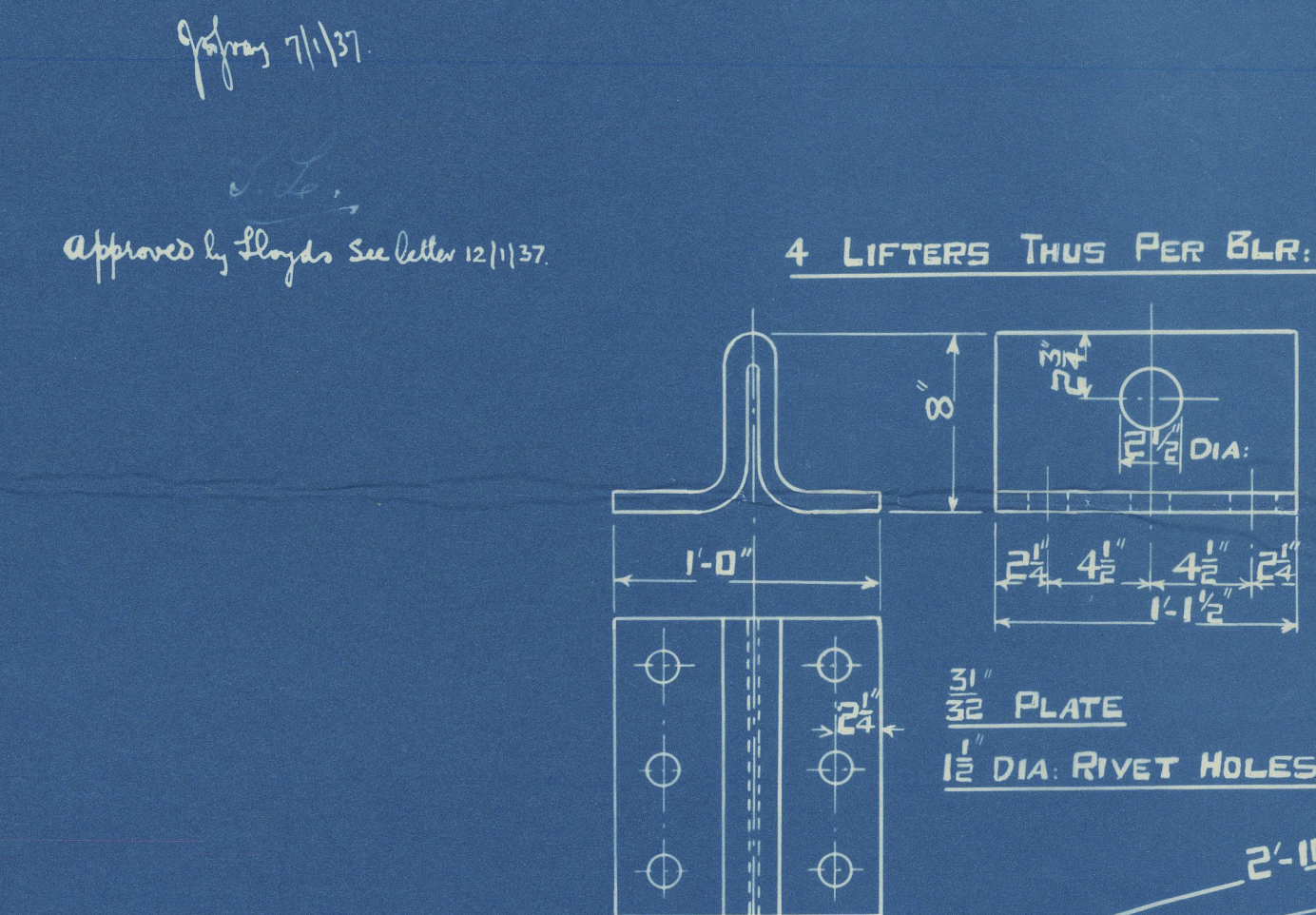
$$\text{COMBINED \%} = \frac{100 \times (9.125 - 2.625) \times 87}{9.125 \times 5} = 88.6$$

$$\text{SHELL} = \frac{(40\frac{1}{2} - 2) \times 29 \times 85.6}{2.75 \times 185} = 186.8 \text{ LBS}$$



| PARTICULARS FOR ONE BOILER | | 3 BARS. |
|----------------------------|---------|---------|
| HEATING SURFACE TUBES | = 2100 | 6300 |
| " " BACKS | = 82 | 246 |
| " " BK. TUBE PLATE | = 55 | 165 |
| " " TOP & SIDES | = 158 | 474 |
| " " FURNACES | = 161 | 483 |
| " " TOTAL | = 2556 | 7668 |
| GRATE AREA 5'-6" BAR | = 63.3 | 190 |
| AREA THRO' TUBES | = 11.65 | 34.95 |

| TESTS OF MATERIAL | |
|---------------------------------|------------|
| SHELL PLATES | 29-33 TONS |
| BUTT STRAPS | " " " |
| GIRDERS | " " " |
| MANHOLE DOORS | " " " |
| ALL COMB. CH. & FLANGING PLATES | 26-30 |
| FURNACES | " " " |
| SCREWED STAYS | " " " |
| LONGITUDINAL STAYS | 28-32 |



SCHEDULE "D"

3. OFF THUS

N. E. M. E. CO., LIMITED, WALLSEND.
ENCLOSURE
Main Lloyds Register of Shipping
No. 222-0072
Hull on 1/2/22

TRACING No 778
CONTRACT R 2891

North Eastern Marine.
Engineering Co. Ltd
Wallasey.

Replace Boilers C. 2891

Duplicate Plan

SS Thode Fagelund.

185 lbs. W.P.

NEWCASTLE ON TYNE.

Report No. 95396,

No 718
LLOYDS TEST
328 LBS
W.P. 185 LBS
31-5-37. J.E.S.

W222-0072



© 2020

Lloyd's Register
Foundation