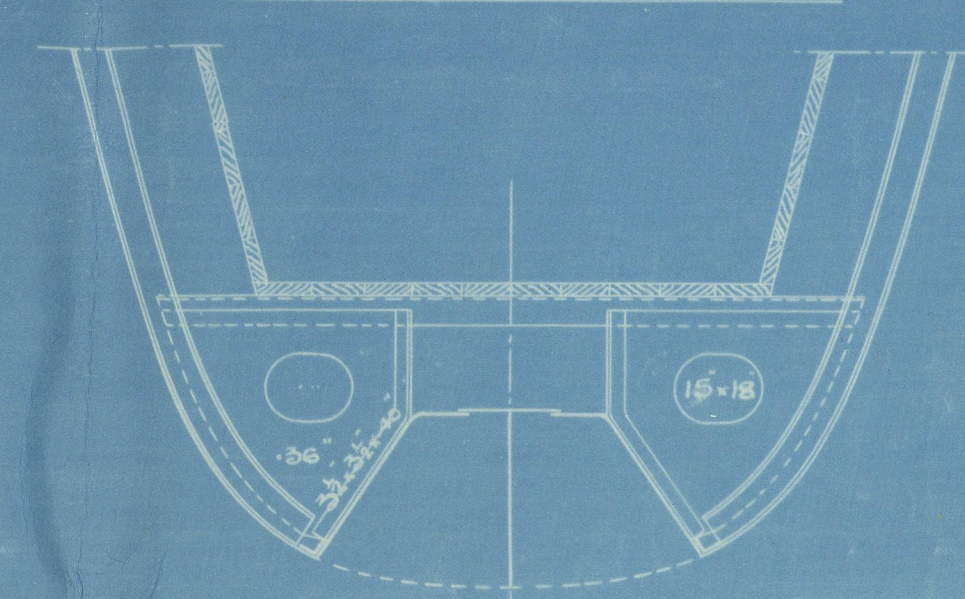


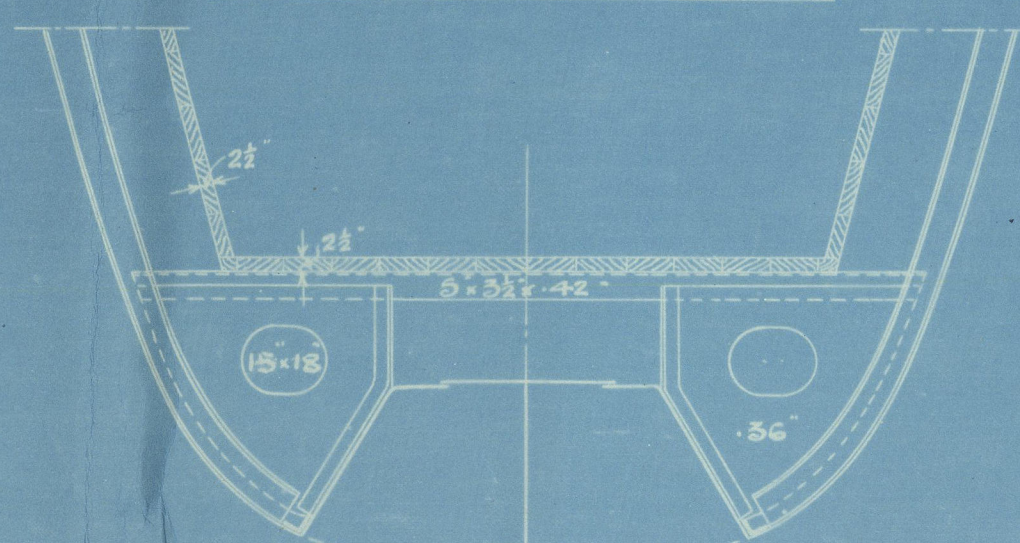
PROFILE



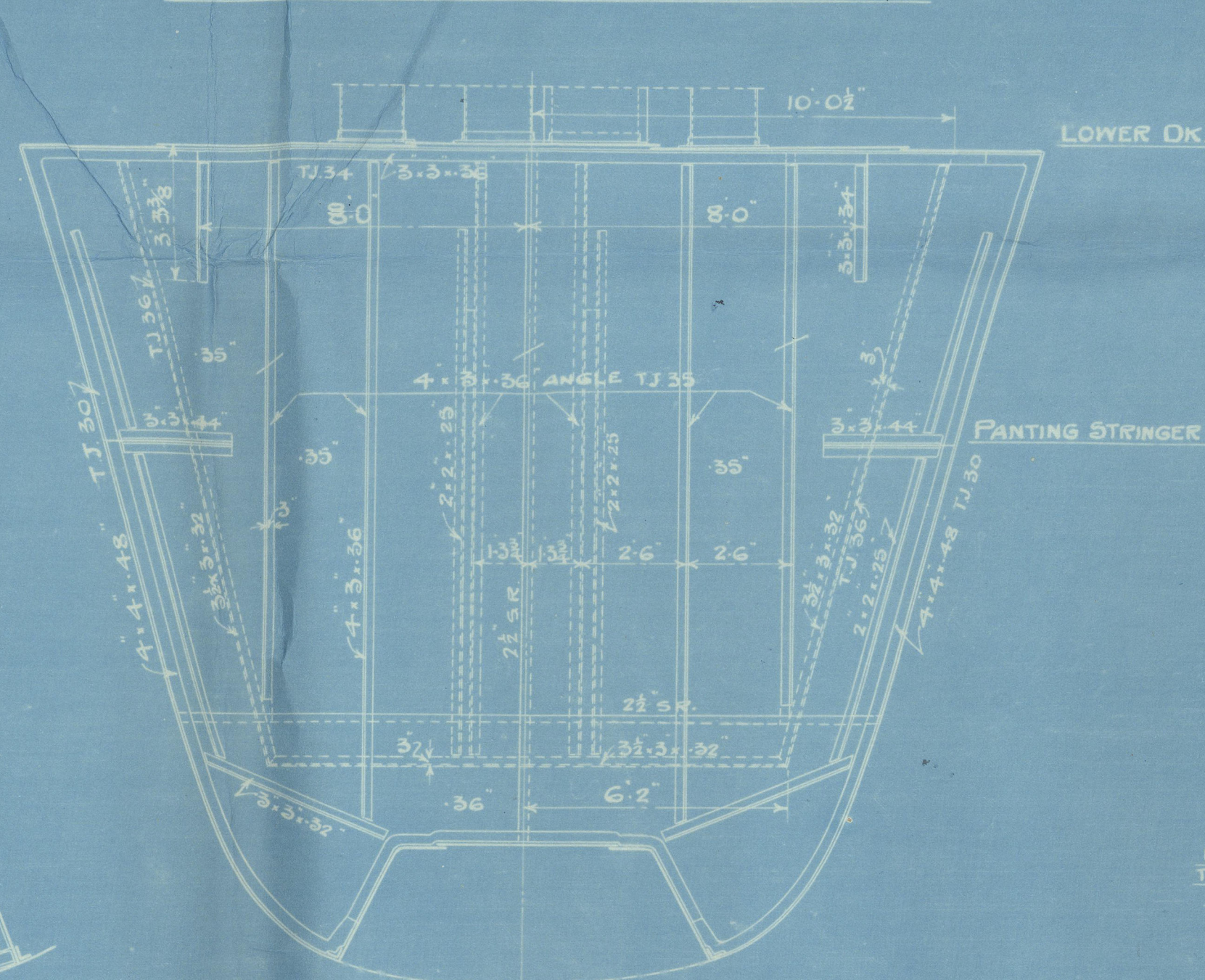
SECTION ON FRAME 146



SECTION ON FRAME 145

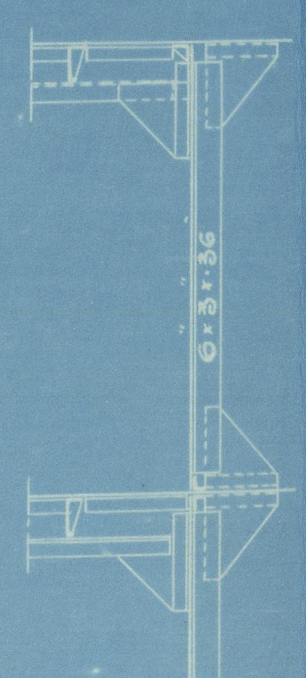


W.T. BULKHEAD ON FRAME 144

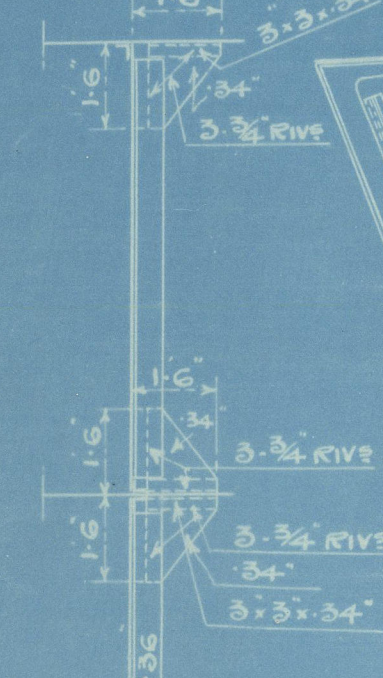


W.T. BULKHEAD ON FRAME 147

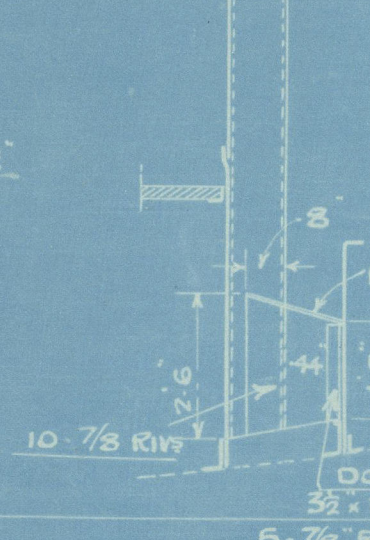
SECTION "E F"



SECTION "C D"



SECTION "A B"



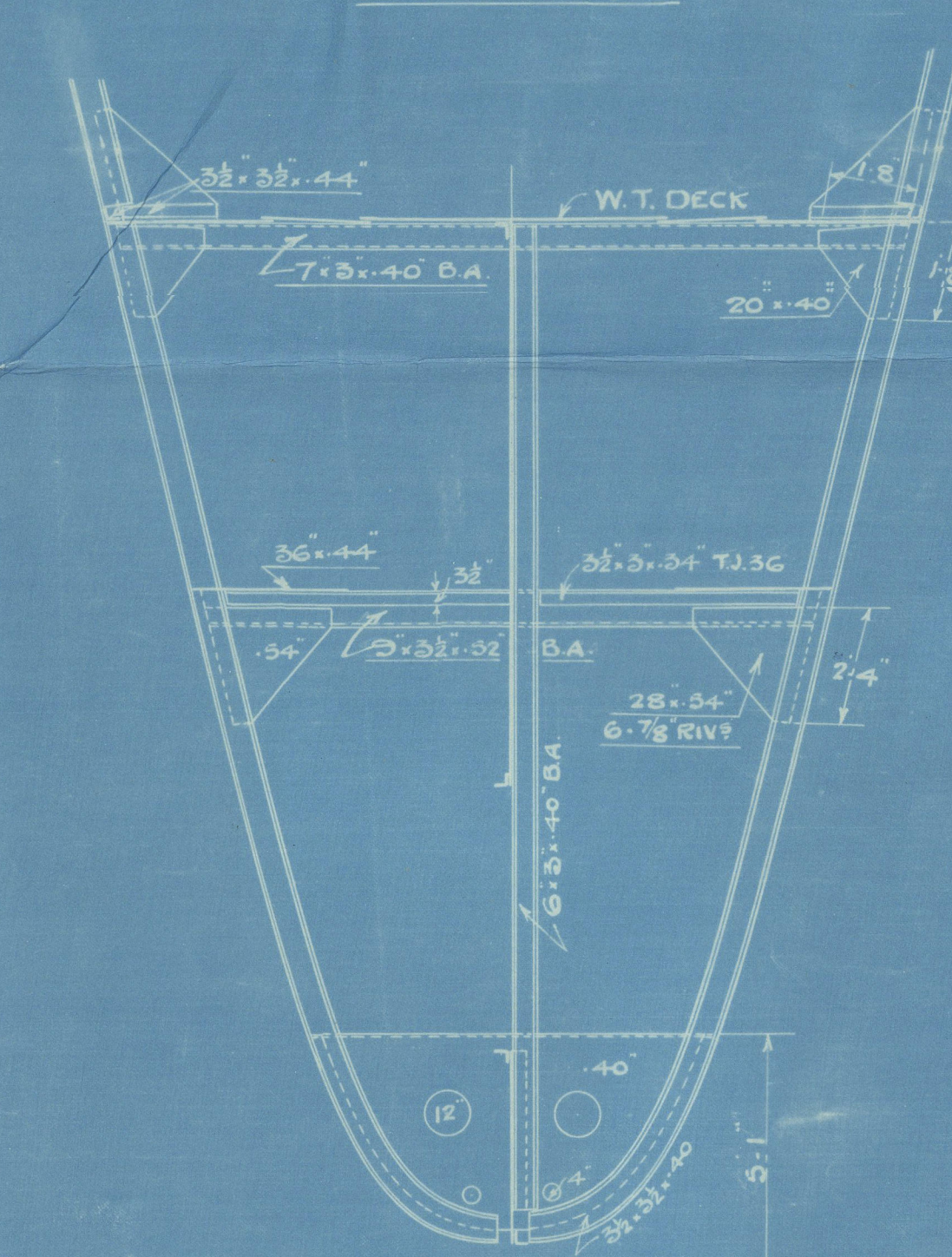
S.S. "TJILEBOET" S.O. N° 6390

FORE END STIFFENING

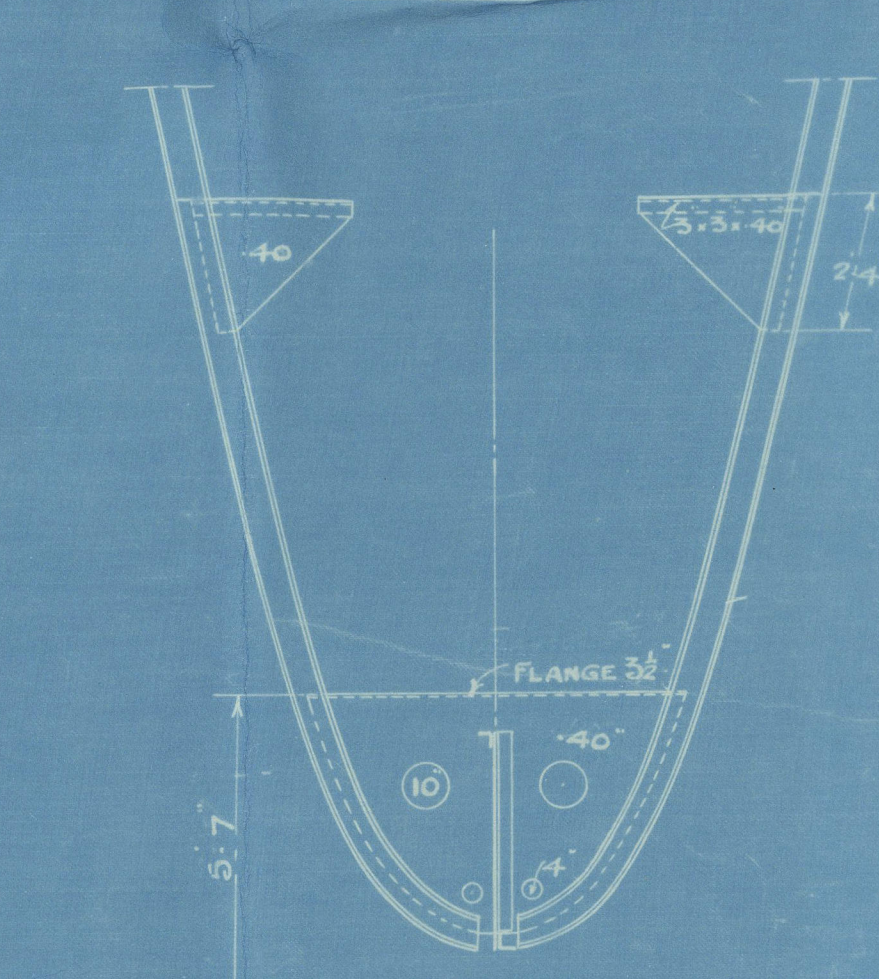
SCALE 1=40

ALL SECTIONS ARE DRAWN LOOKING FORWARD

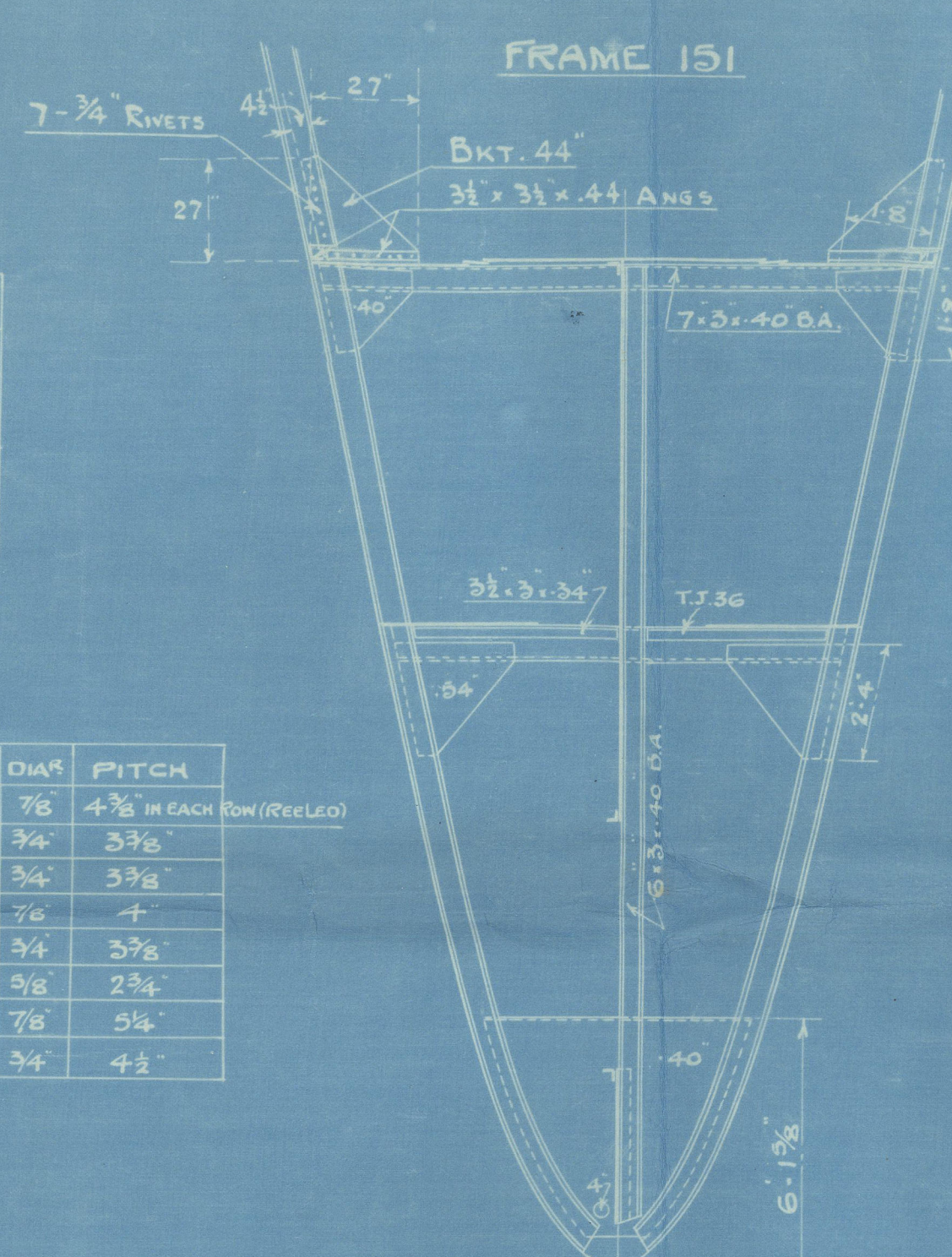
FRAME 149



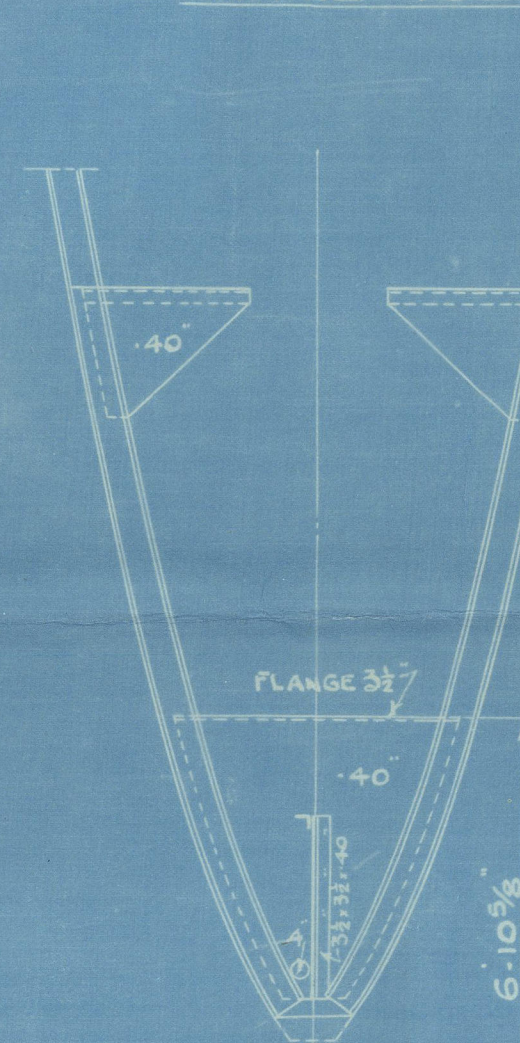
FRAME 150



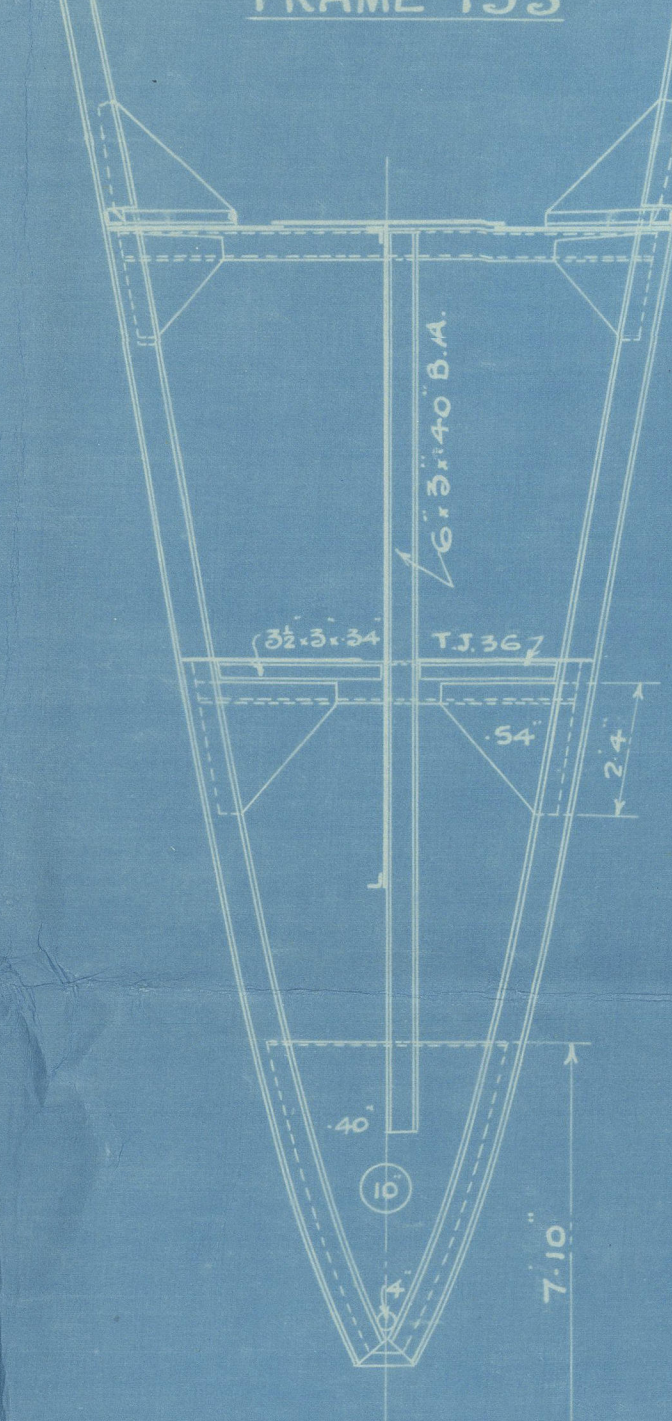
FRAME 151



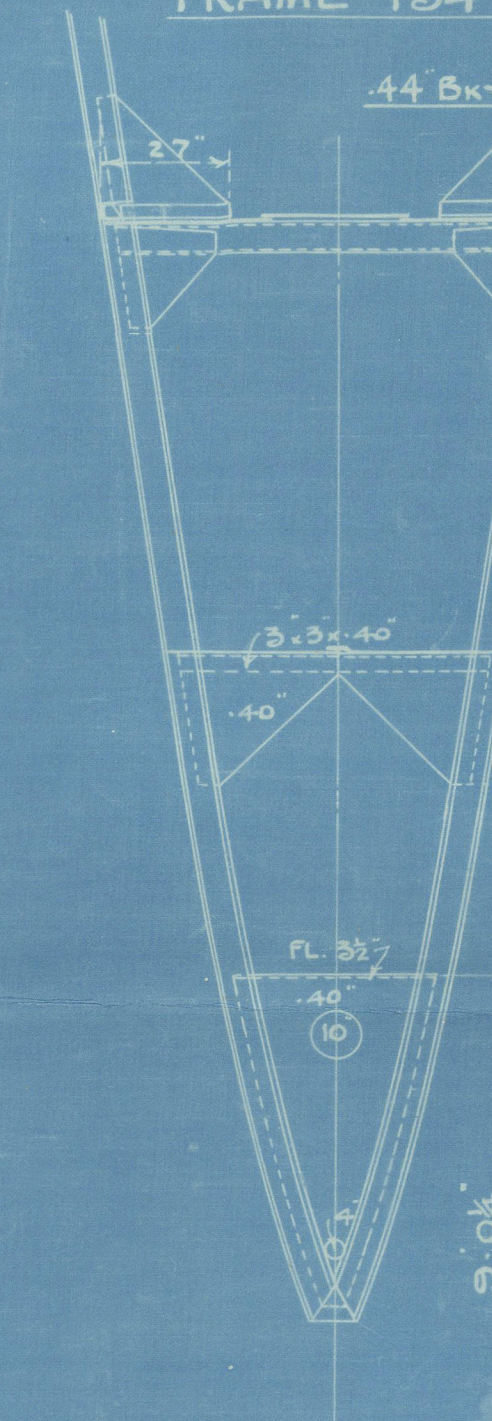
FRAME 152



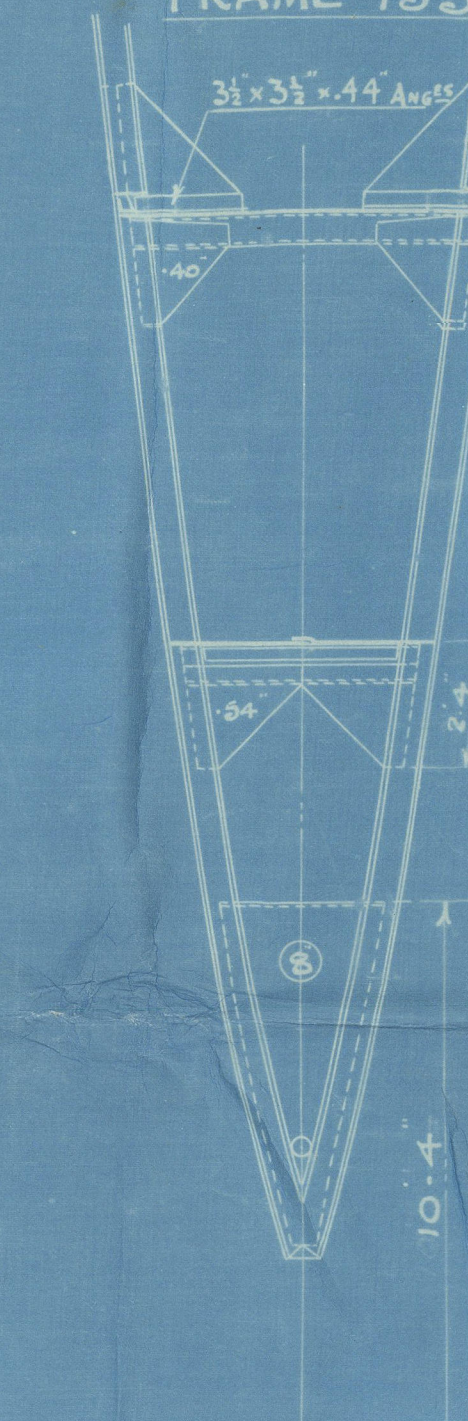
FRAME 153



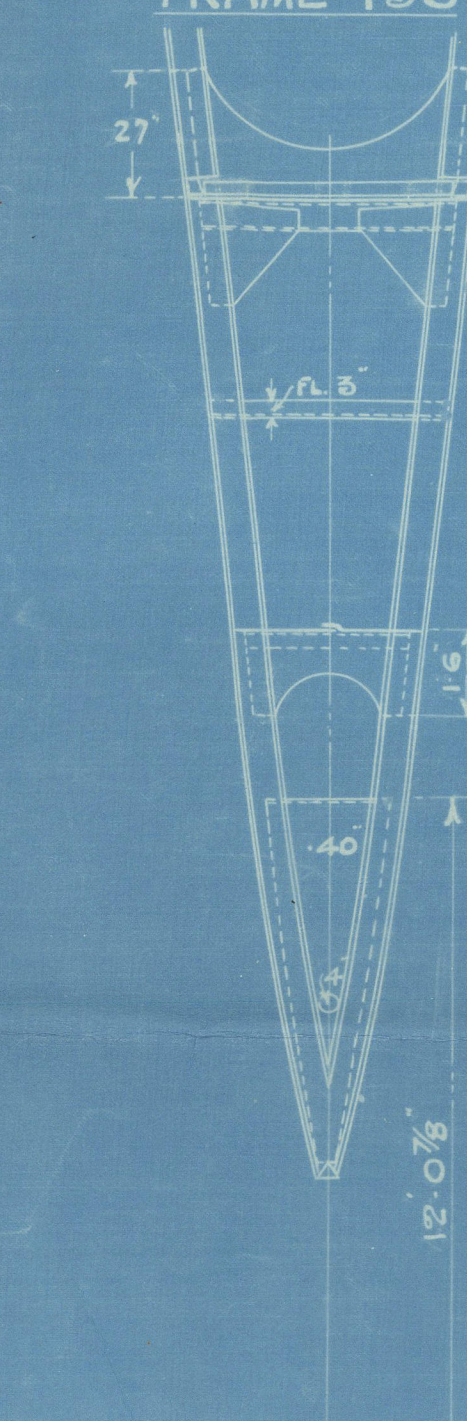
FRAME 154



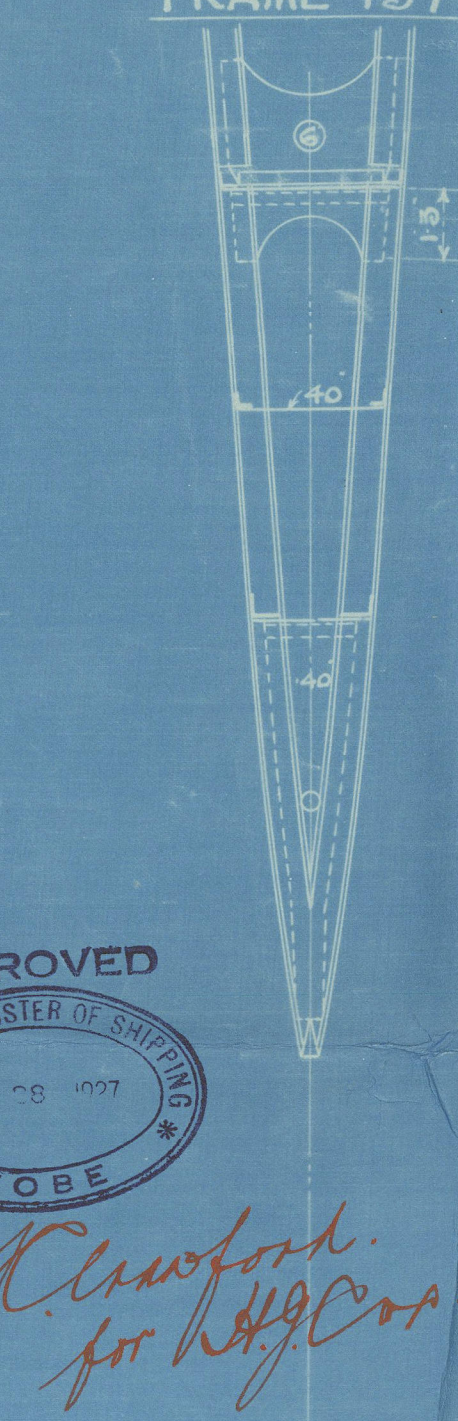
FRAME 155



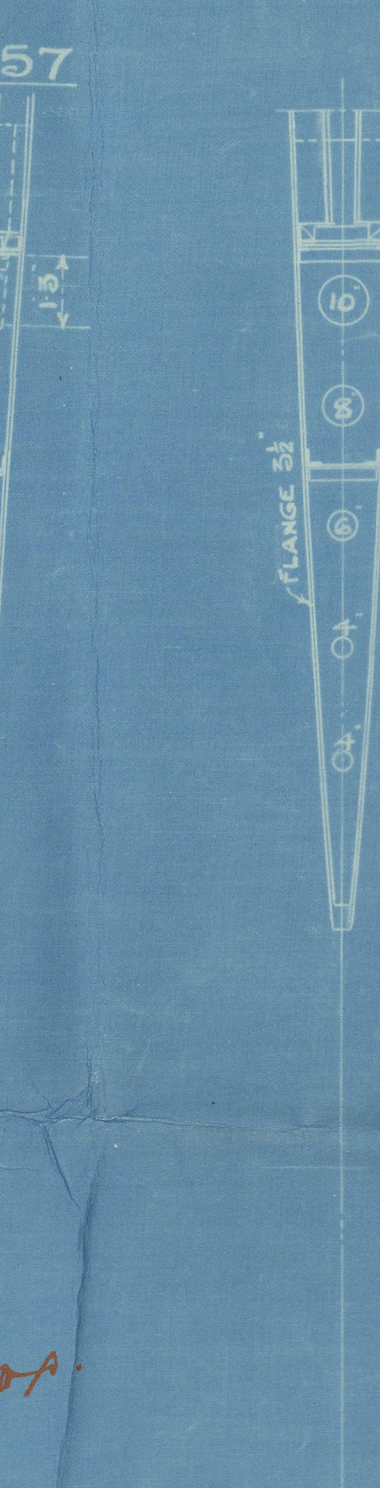
FRAME 156



FRAME 157



FRAME 158



BOTTOM STRENGTHENING FROM 3/5 E. FORE TO FRAME 149.

RIVETS IN PLATING AND FRAMES IN THE BOTTOM FORE SPACED NOT MORE THAN 5 1/2 DIA. APART FROM CR. TO CR.
ADDITIONAL INTERCOSTAL GIRDER 22'-36" (FROM 3/5 E. TO FRAME 138) SEE SECTION ON FR. 138.
FRAMES DOUBLED IN DOUBLE BOTTOM FROM MARGIN PLATE TO MARGIN PLATE, FRAME 148 AND 149 TO TOP OF FLOOR.
THREE STRAKES OF BOTTOM PLATING MIDSHIP THICKNESS MAINTAINED.

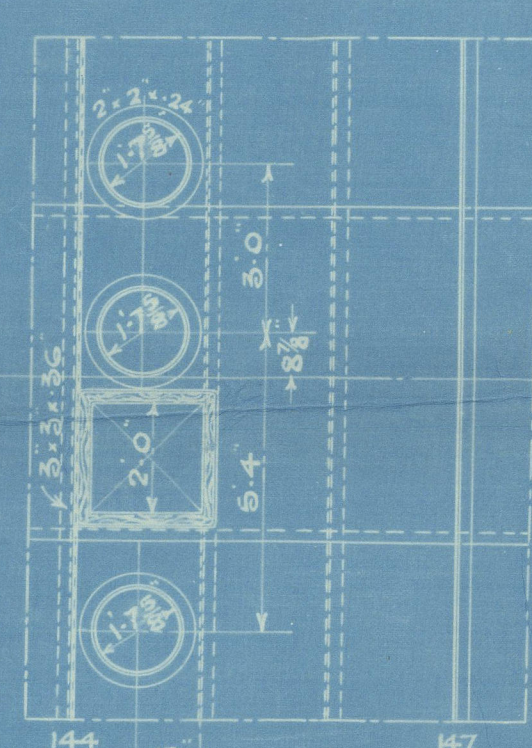
PLATES ORDER

MARK	NO. OF	LENGTH	BREADTH	THICKNESS
TJ 611	1	15'-0"	63"	1/4"
G15	1	17'-6"	36"	3/8"
G22	1	14'-0"	32"	3/8"
G25	1	-	-	-
G26	1	-	-	-
G28	1	12'-6"	72"	3/8"
G29	1	20'-0"	63"	3/8"

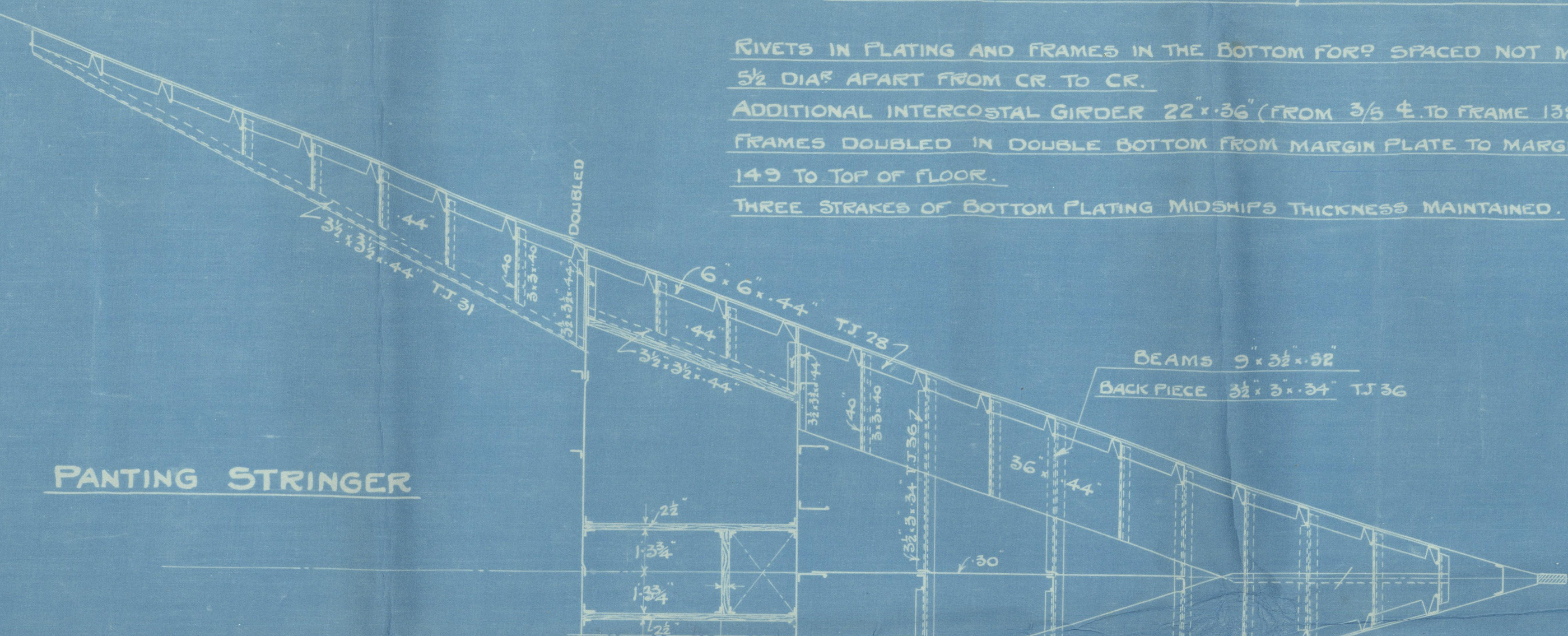
RIVETING NOTE FOR W.T. BULKHEADS.

ITEM	DIA.	PITCH
G & G BOUNDARY BAR	7/8"	4 1/8" IN EACH ROW (RECEIVED)
4 x 4"	3/4"	5 3/8"
DECK BARS	3/4"	5 3/8"
SEAMS & BUTTS PLATES 36"	7/8"	7"
- 22 & 36"	3/4"	2 3/4"
- UNDER 36"	3/8"	2 3/4"
11/2" O.A. STIFFENERS TO PLATING	7/8"	5 3/8"
REINFORCEMENT OF STIFFENERS TO PLATING	3/4"	4 3/8"

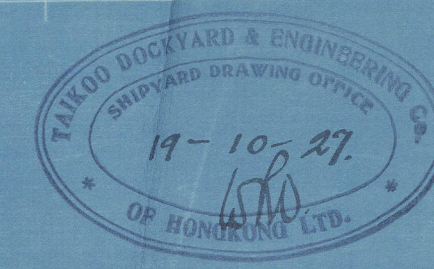
LOWER DECK



PANTING STRINGER



IN PEAK THE RIVETS TO BE SPACED NOT MORE THAN 5 DIA. APART CR. TO CR.

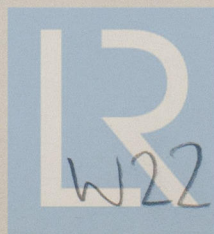


W223-0148

TJLEBOET

Fore end Stiffening

Approved
Tobe



© 2019

W223-0148
Lloyd's Register
Foundation