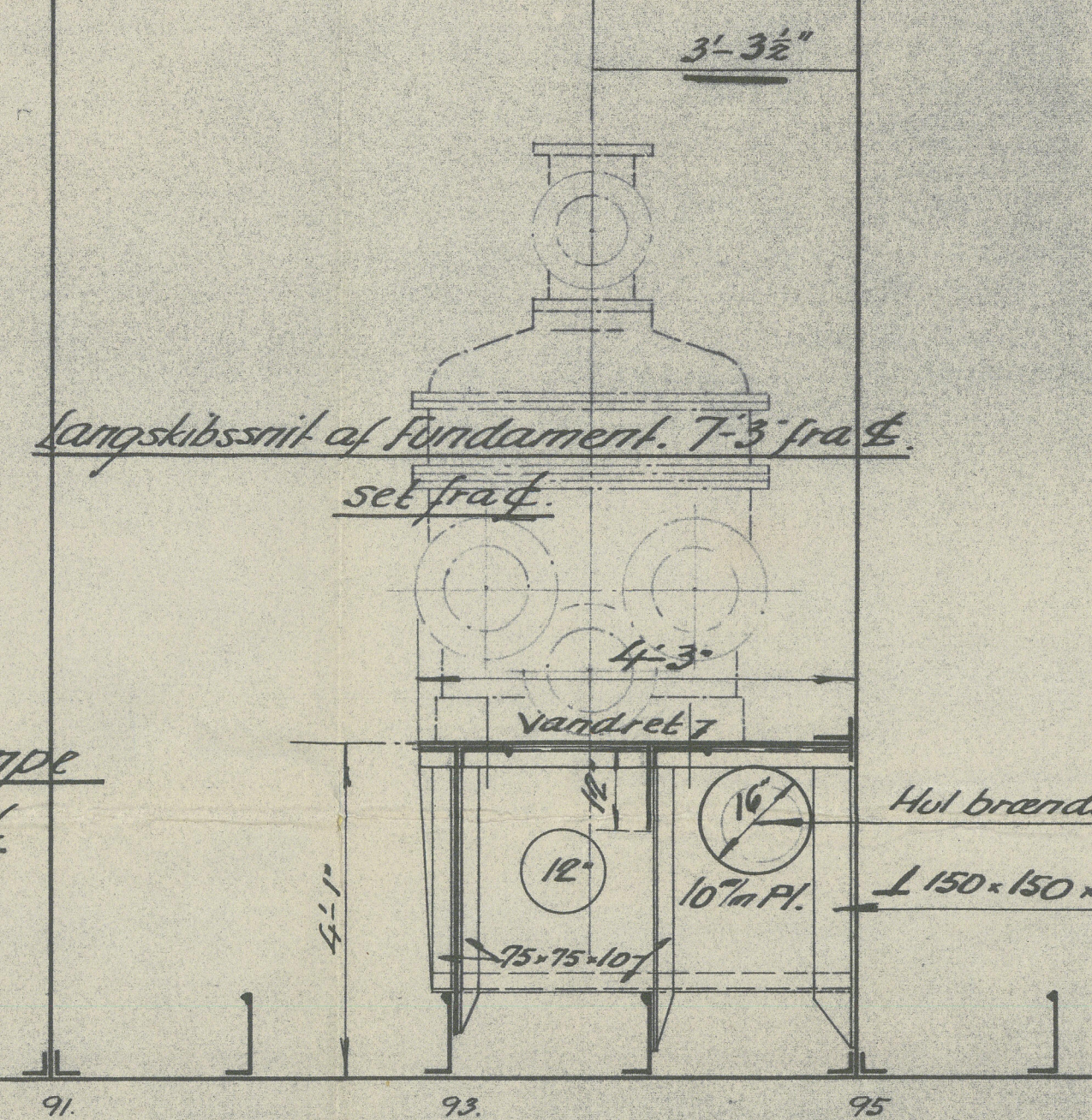
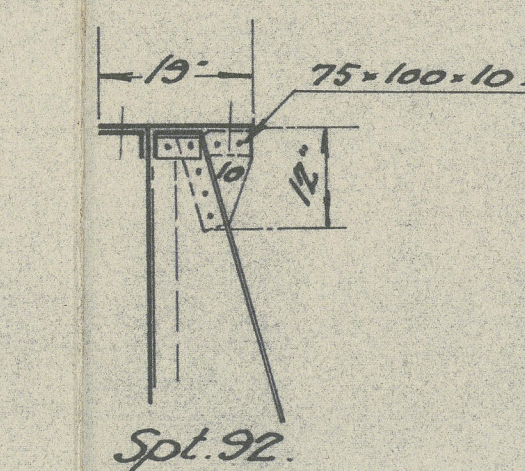
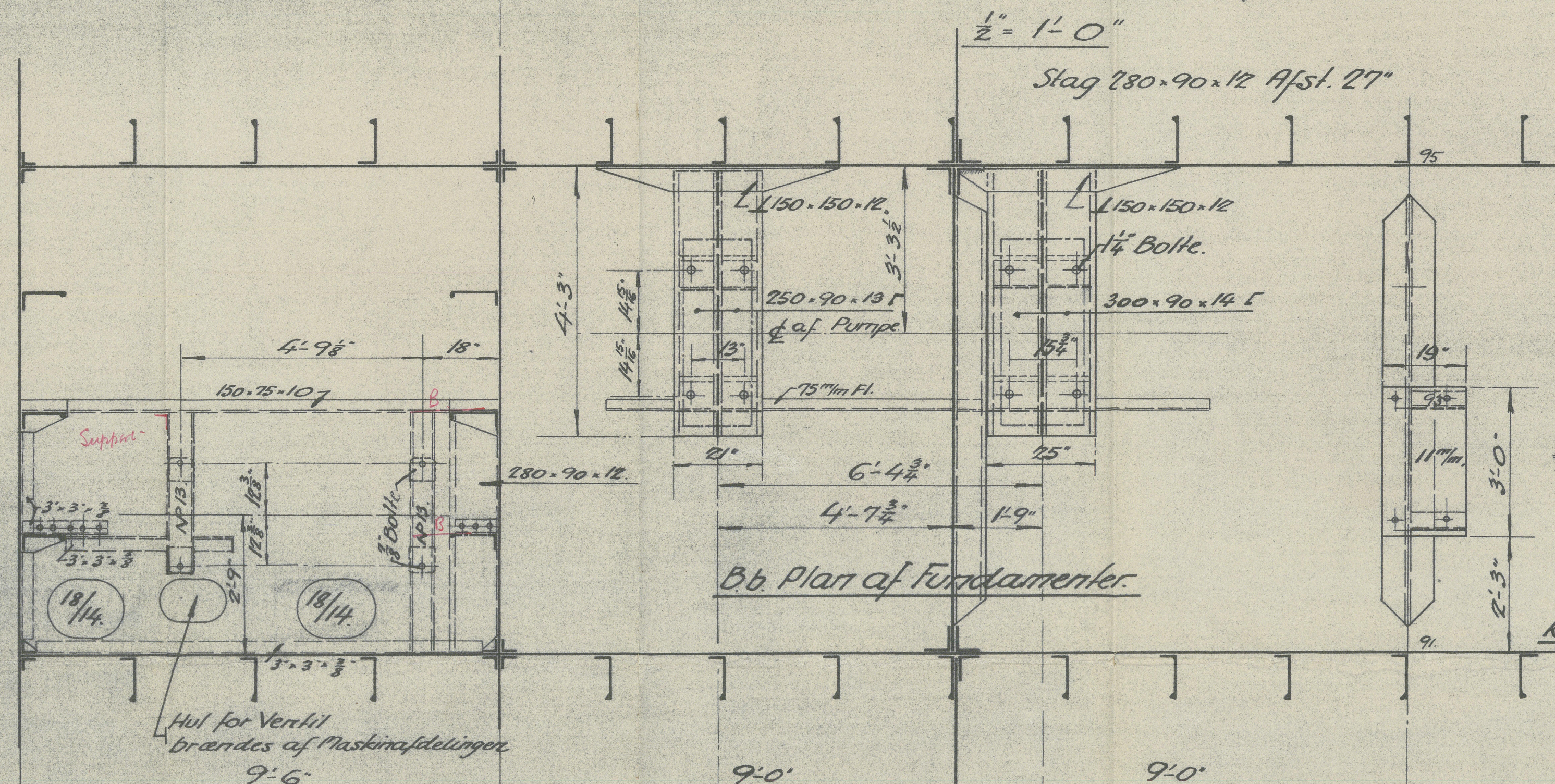
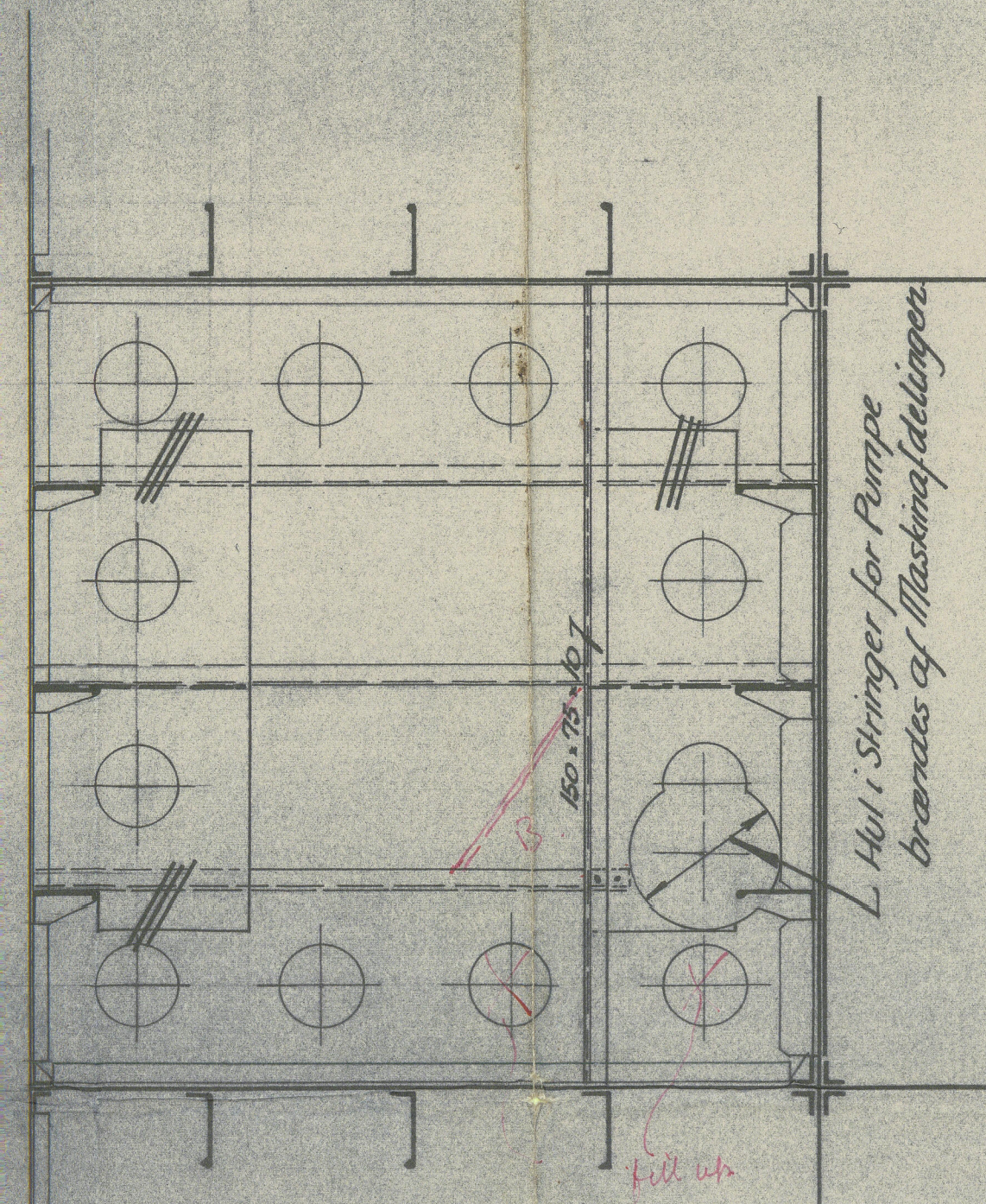


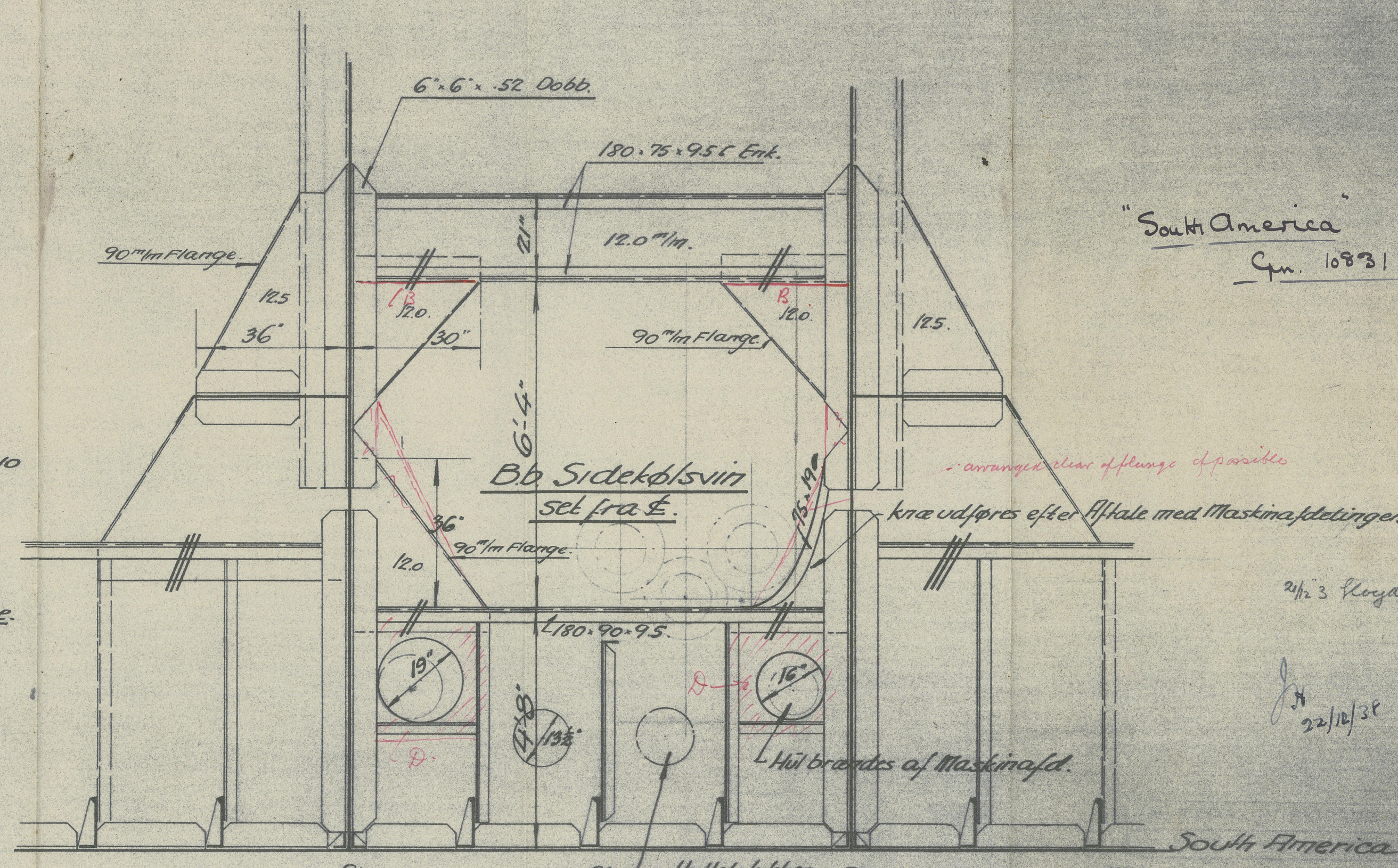
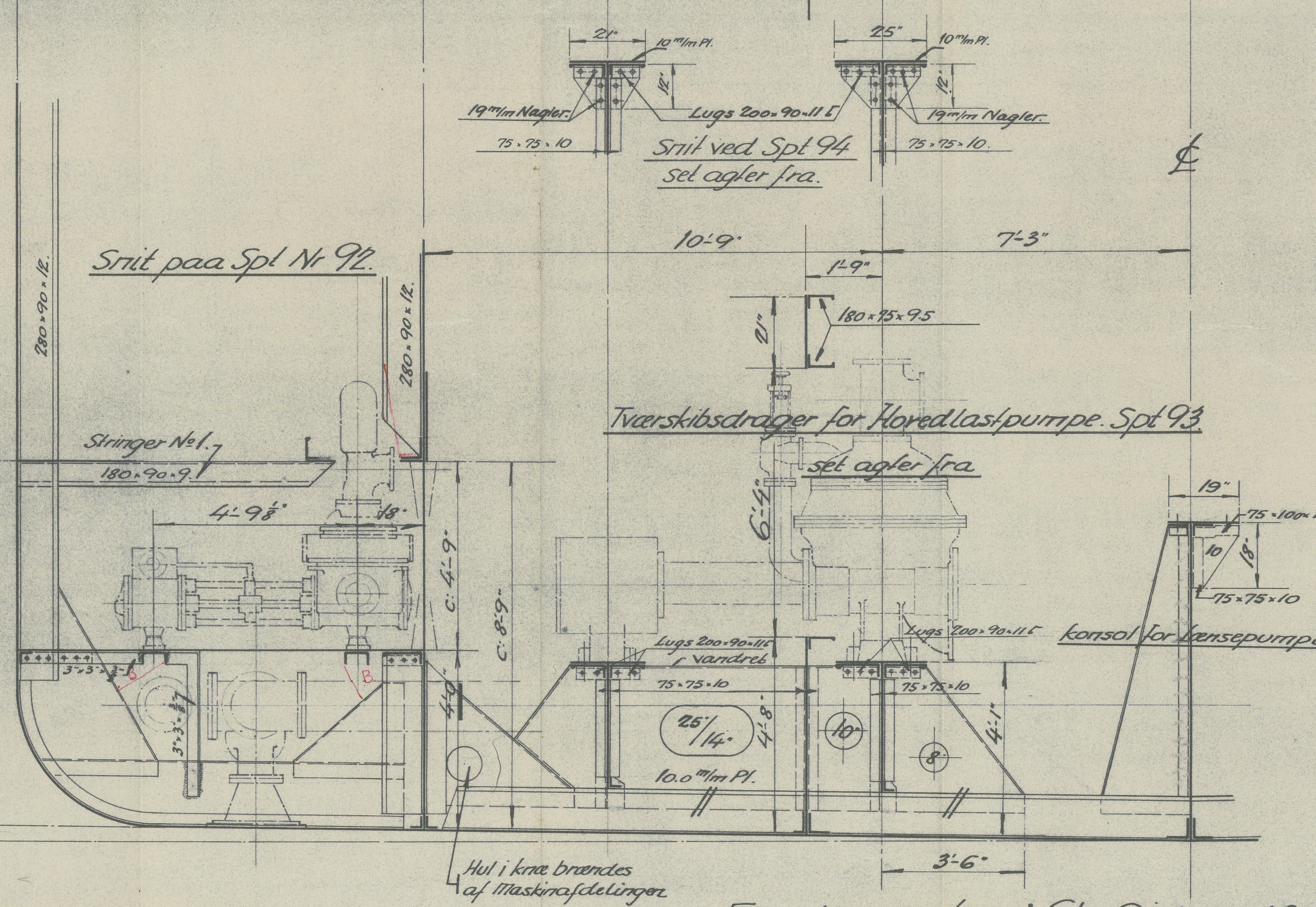
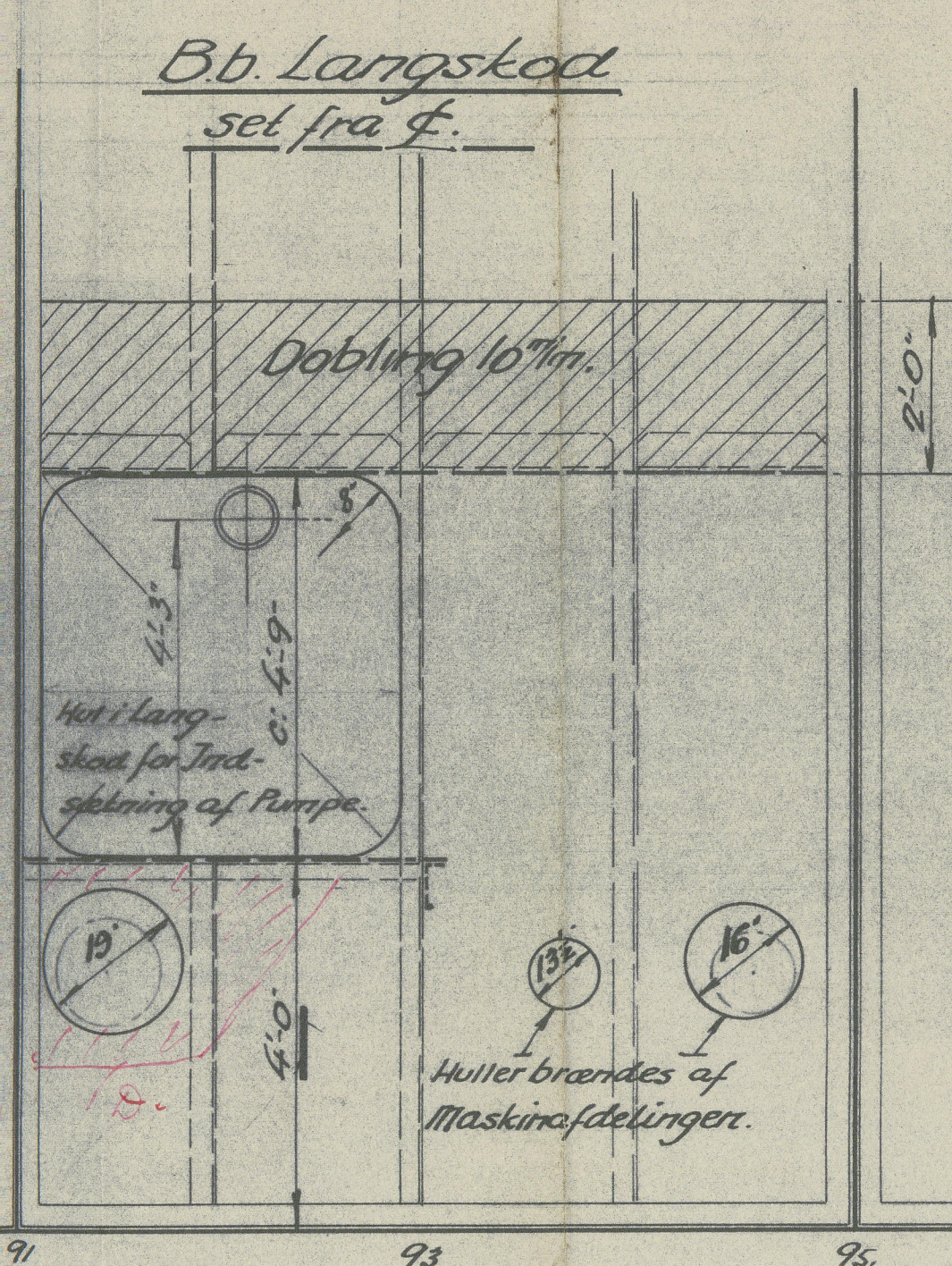
"South America"
Fundamenter i Pumperum.

C. 300
22 Dec 1938



Stringer No 1. set fra oven.

Ensuring lightning holes
in girders to be filled up
where considered necessary
by the Surveyors



"South America"
Cm. 10831.

2 1/2 3 Floyds B.

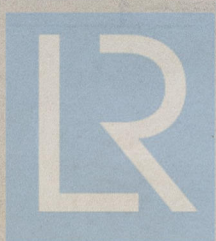
22/12/38

Fundamenter i Sb. Side udføres som Bb! Sparkeafstand 29"

South America
Fundamenter i Pumperum.

W261 - 0017

123



© 2019

Lloyd's Register
Foundation