

7/9/17

S.S. N° 699.

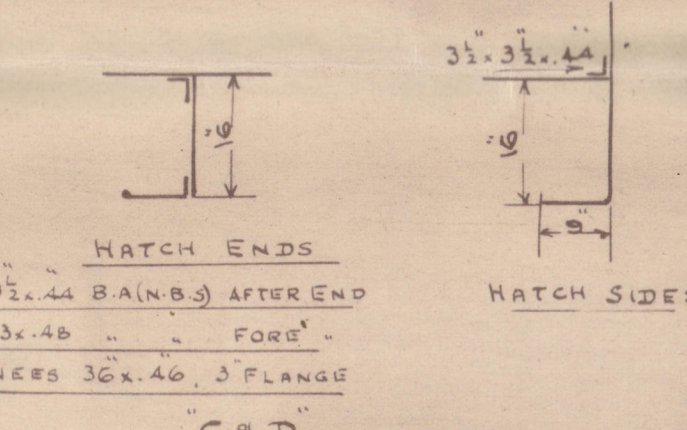
PROFILE & DECK PLANS.

LENGTH B.P. 405'-0" BREADTH MLD. 53'-3" DEPTH MLD. 29'-5" (UPPER DECK)

SCALE 1" = 1' FOOT

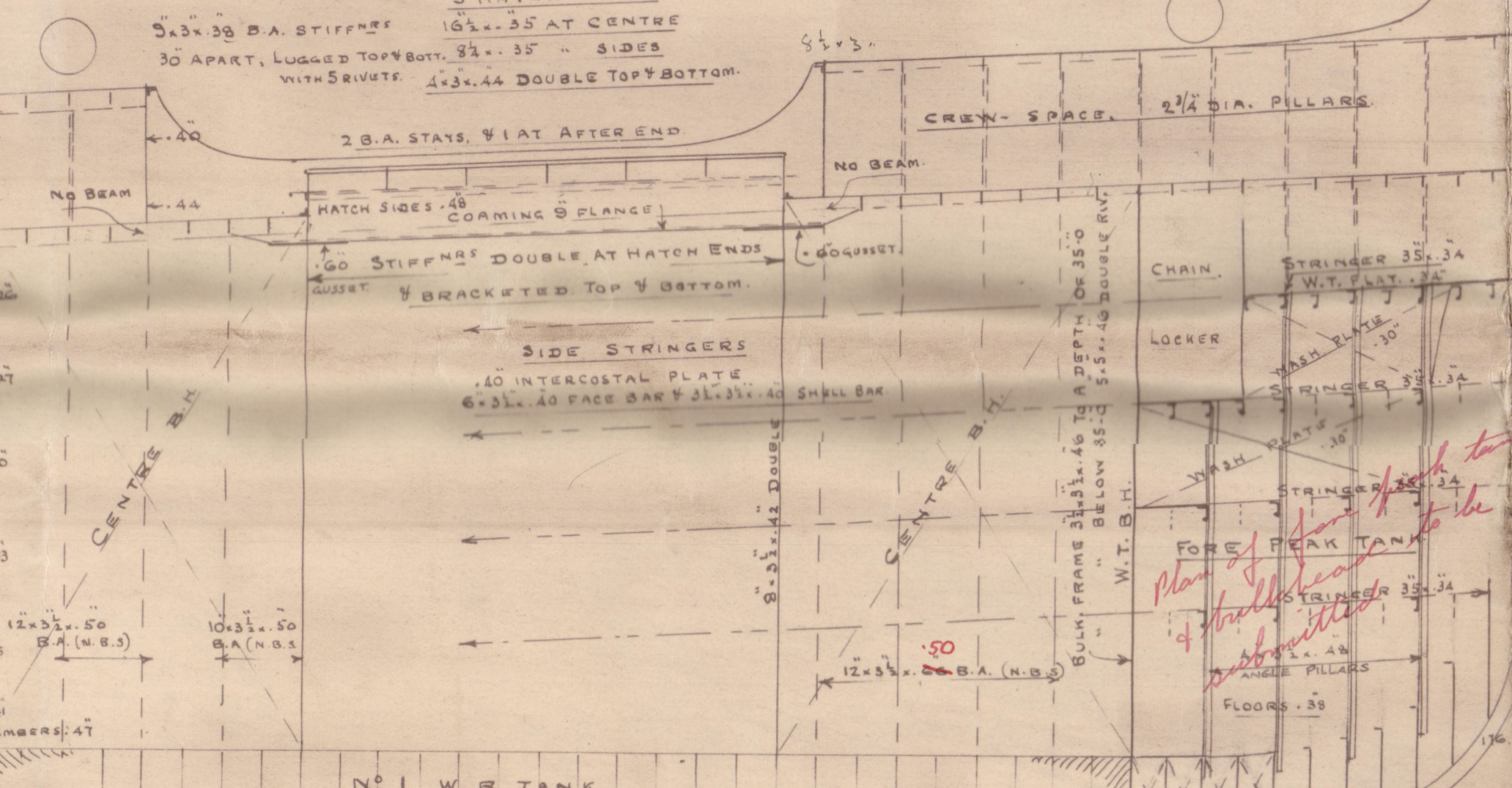
POOP 25'-5"
BRIDGE 226'-5"
FOOT 41'-0"

73.9% ERECTIONS

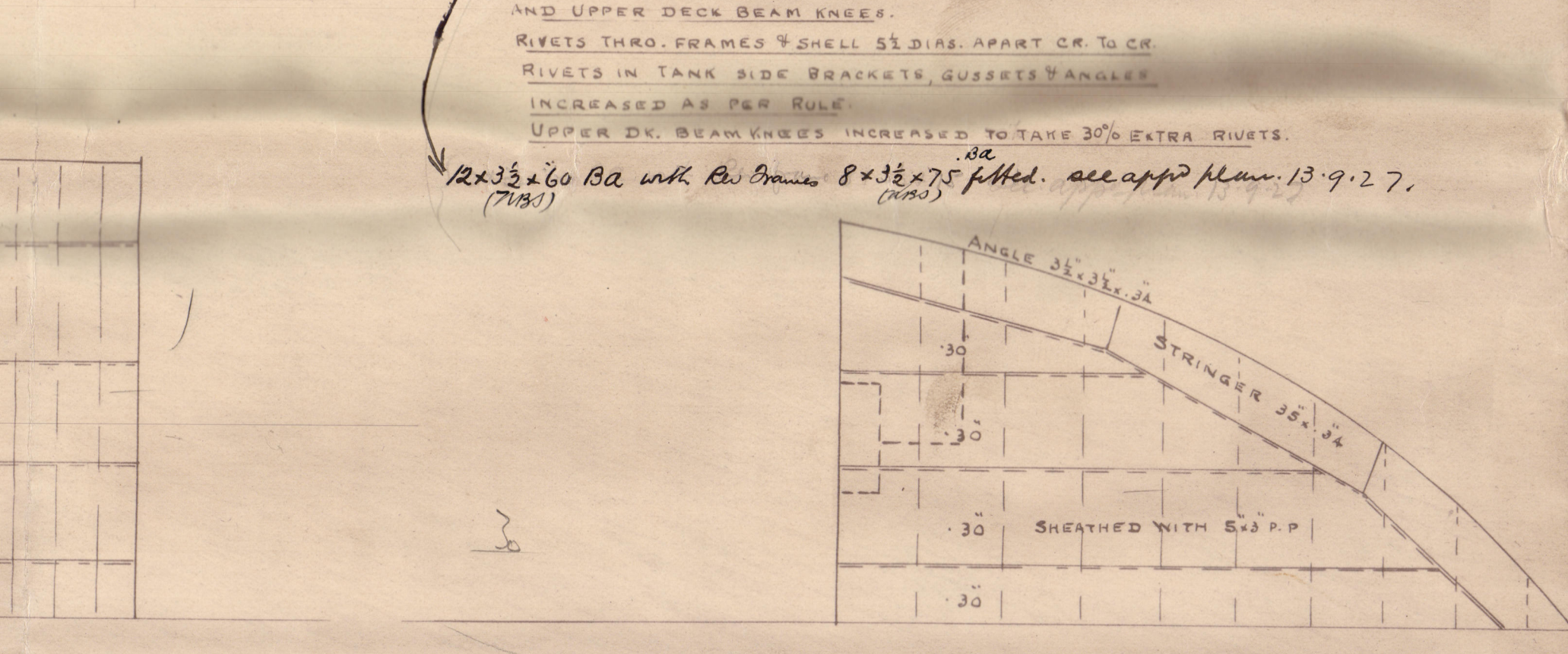


17'-2 1/2" x 17'-2 1/2" x 17'-2 1/2" x 17'-2 1/2"

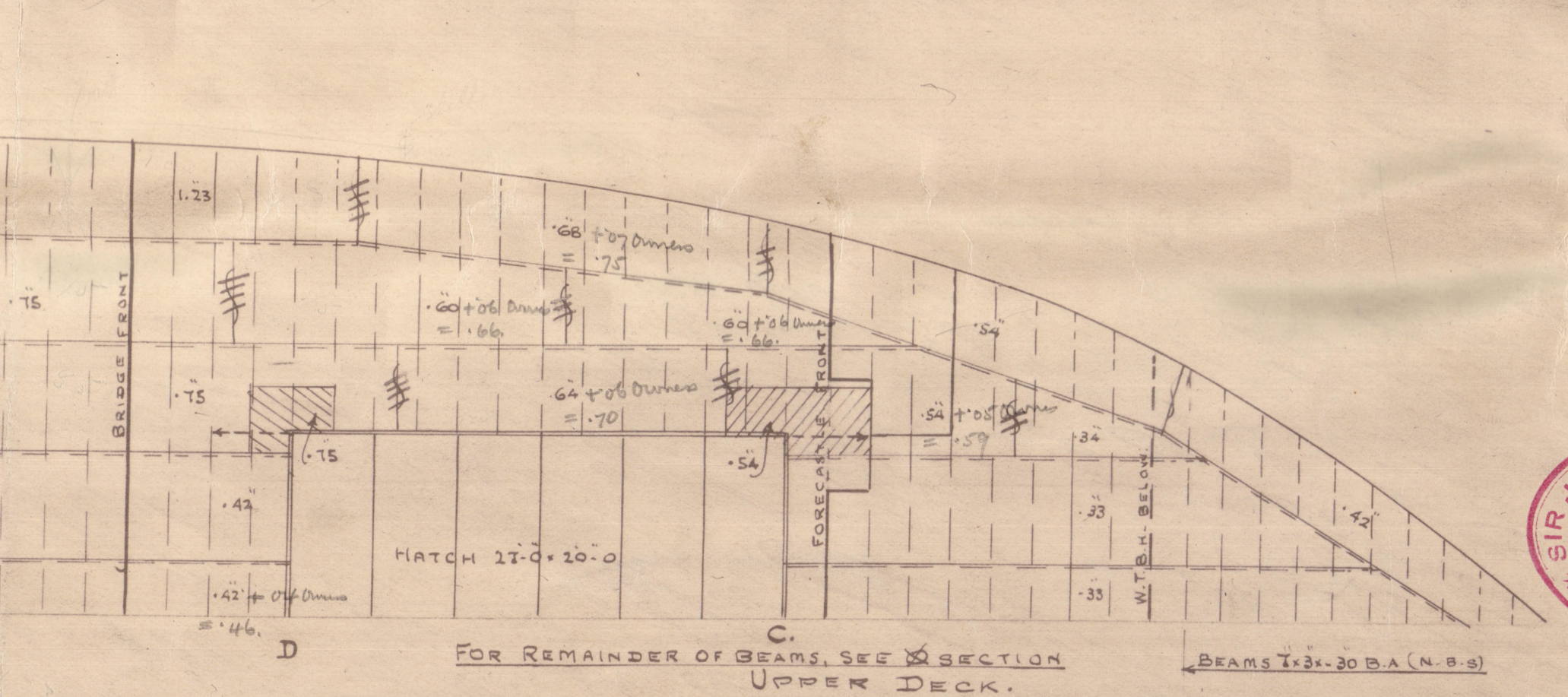
Additional strengthening under windlass, anchors, steam gear, masts, etc., to survivors satisfaction.



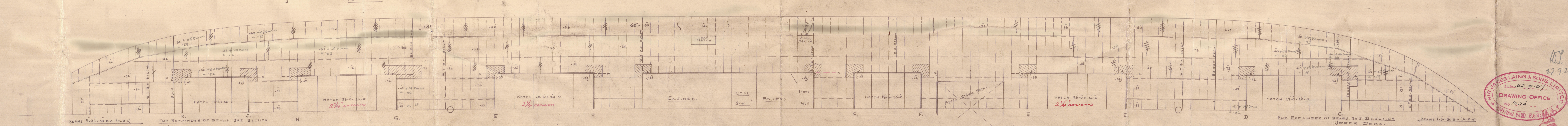
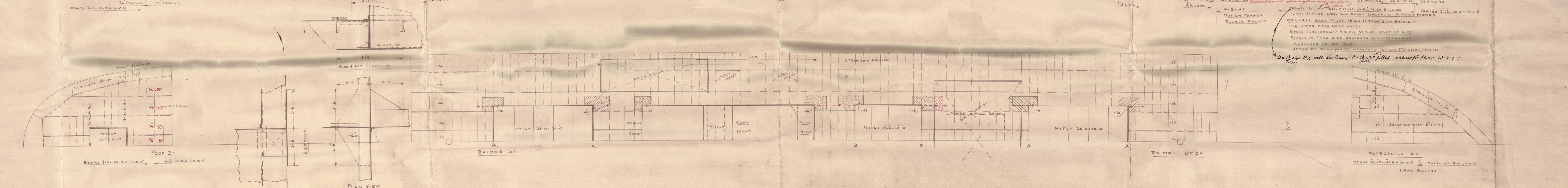
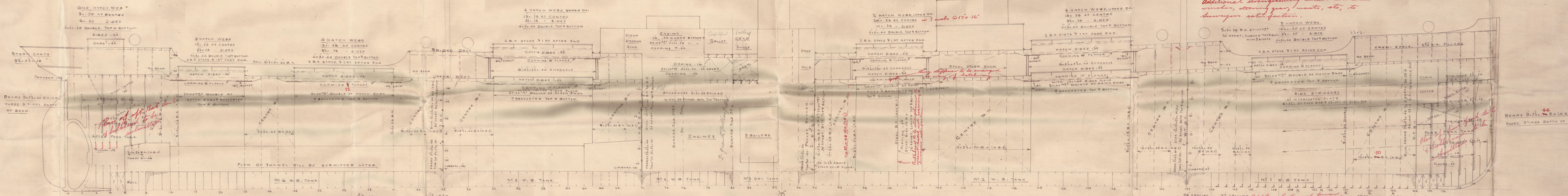
Additional strengthening under windlass, anchors, steam gear, masts, etc., to survivors satisfaction.



Additional strengthening under windlass, anchors, steam gear, masts, etc., to survivors satisfaction.



Additional strengthening under windlass, anchors, steam gear, masts, etc., to survivors satisfaction.



Additional strengthening under windlass, anchors, steam gear, masts, etc., to survivors satisfaction.

IR JAMES LAING & SONS LIMITED
DRAWING OFFICE
No. 1055
27.9.17

SUNDERLAND

SIR JAS LAING & SONS L^{td}

N^o 699

PROFILE AND DECK PLAN



S.S. KIRKPOOL

LLOYD'S REG. OF SHIP. NO.

29760

W275-0094



© 2020

Lloyd's Register
Foundation