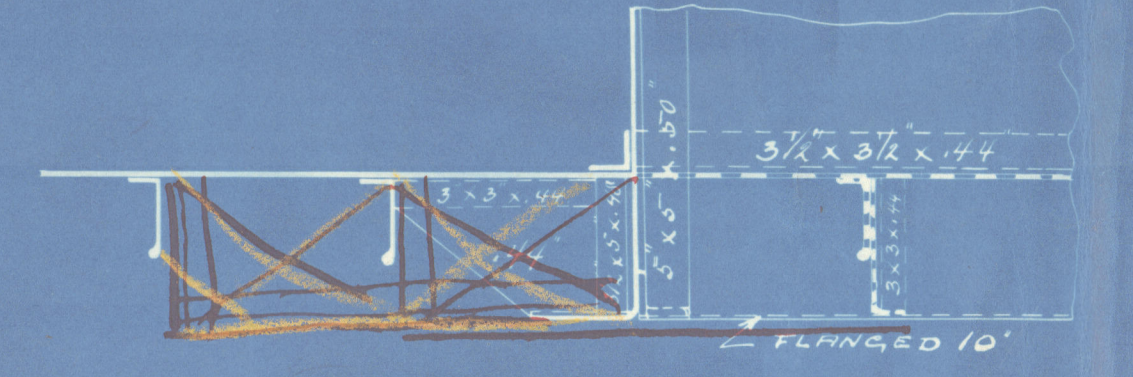


March

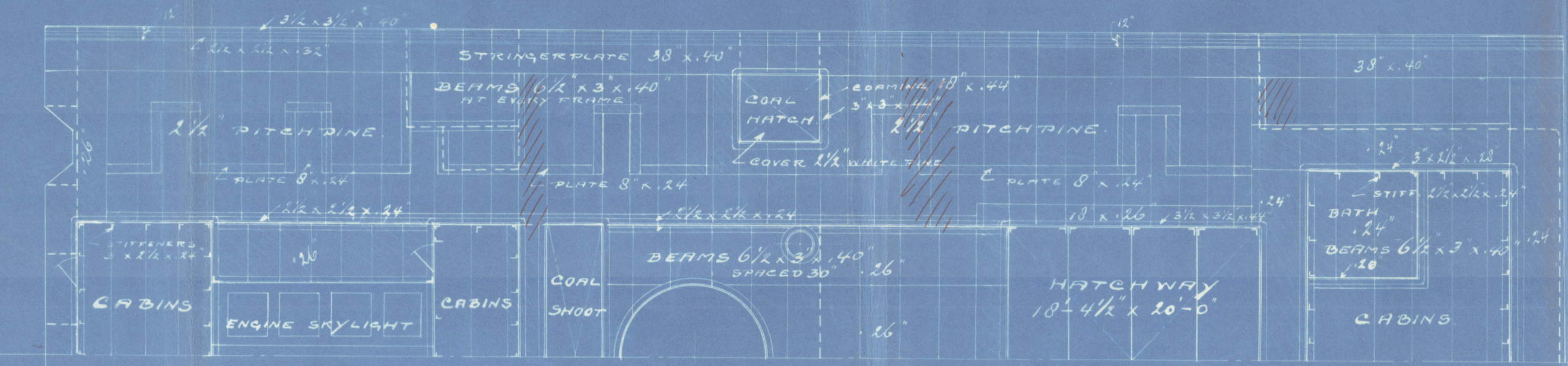
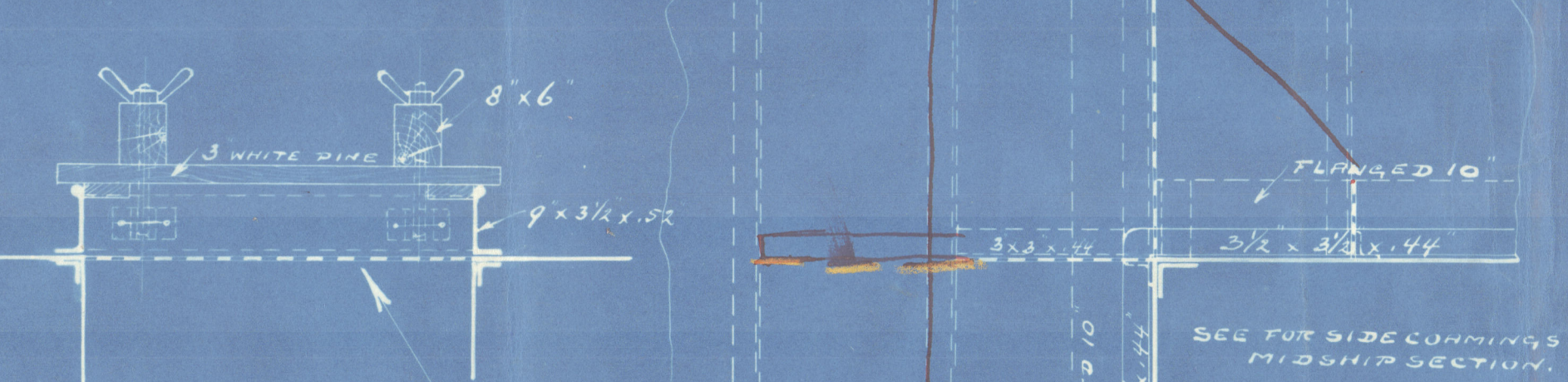
- S.S. No 13. -
- LONGITUDINAL PLAN. -
- CLASS + 100 AT LLOYDS OF STEEL. -

- SCALE 1 TO 100. -

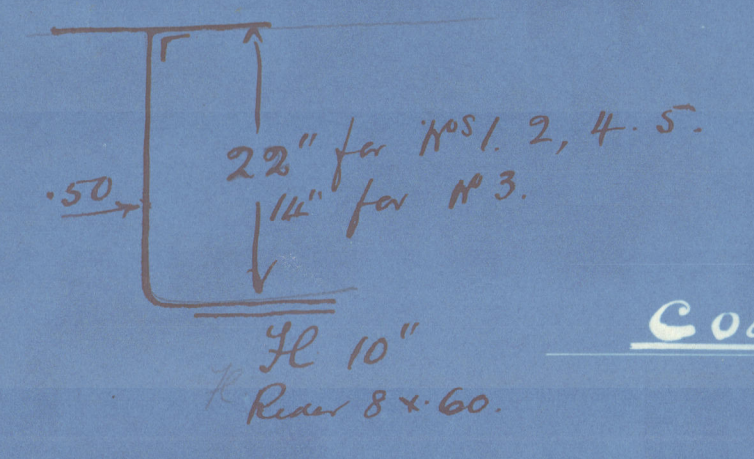
- CONSTRUCTION OF HATCH CORNER. -
SCALE 1 TO 20.



- SECTION A-B. -
SCALE 1 TO 20.



2nd Deck Hatch End beams

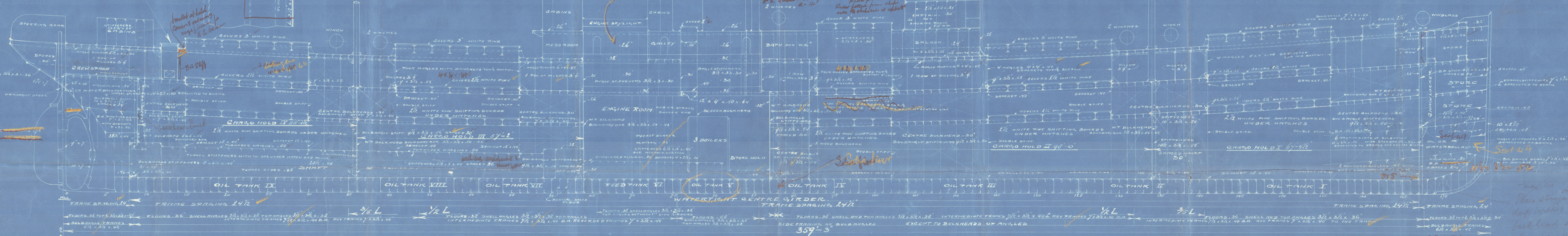
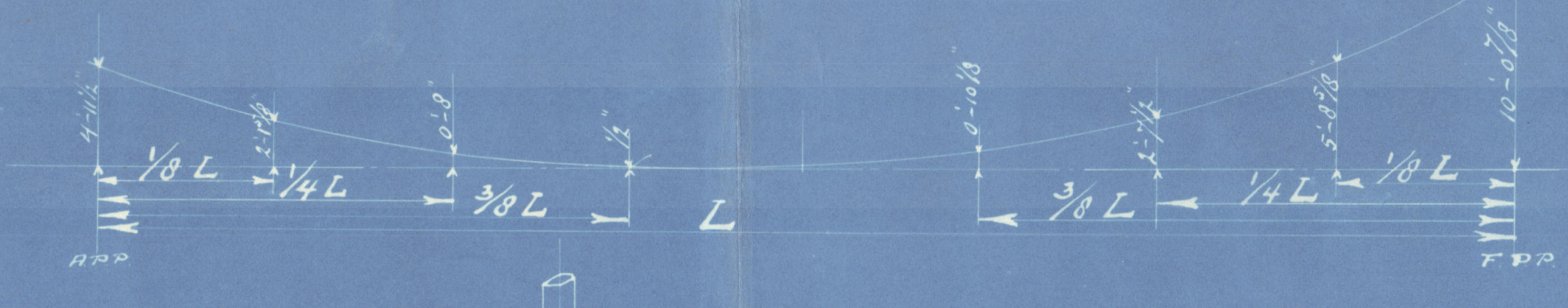


- PRINCIPAL DIMENSIONS. -

LENGTH BETWEEN P.P.	359'-3"
BREADTH MOULDED	50'-0"
DEPTH TO UPPER DECK	24'-6"
DEPTH TO SHELTER DECK	32'-6"
DEPTH TO LOWER DECK	16'-6"
LENGTH OF BOAT DECK	113'-6"
DEPTH OF DOUBLE BOTTOM	3'-6"

COEFFICIENT OF HULLS UNDER SHELTER DECK = 0.88

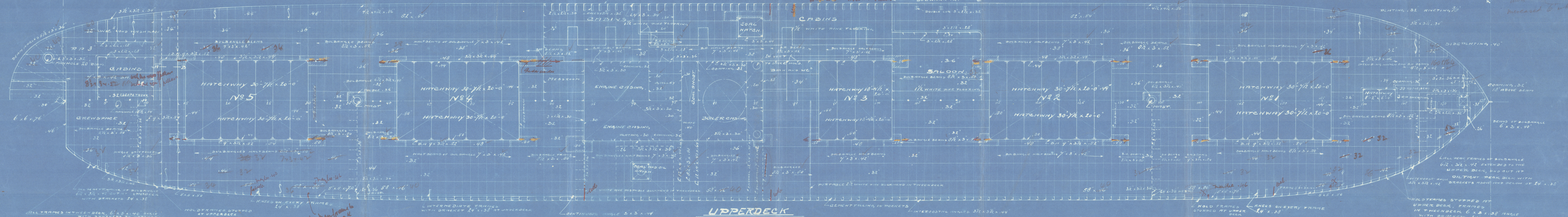
- SKETCH OF SHEET. -



- SHELTER DECK. -

BEEN DOUBLED UP WITH DOUBLES IN SHELTER DECK

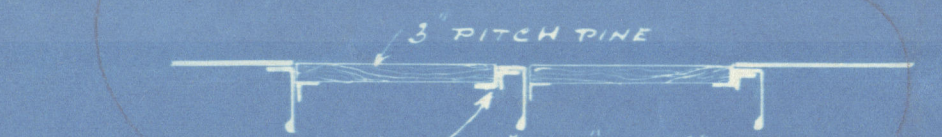
FOR BULKHEADS SEE DETAILED PLAN.



- UPPER DECK. -

ALTERNATE HOLD FRAMES OF BULKHEAD 1/2 X 3/4 X 36" CARRIED UP TO SHELTER DECK

- SECTION THROUGH TRIMMING, HULL. -



- LOWER DECK. -

*These are only
Plate straps, and
deep straps on
back head section
four from 10 beam
and back side of
increased 6" depth*

*Through beams 8' x 36" x 50
beams at deck
holdings
Deck plating 30
Str 40 x 36*

"de Maas"
N^o 13

Profile & Deck.

~~you Box. 2810~~

Is Angis

Rott 11998

W281-0133



© 2021

Lloyd's Register
Foundation