

9/5/19

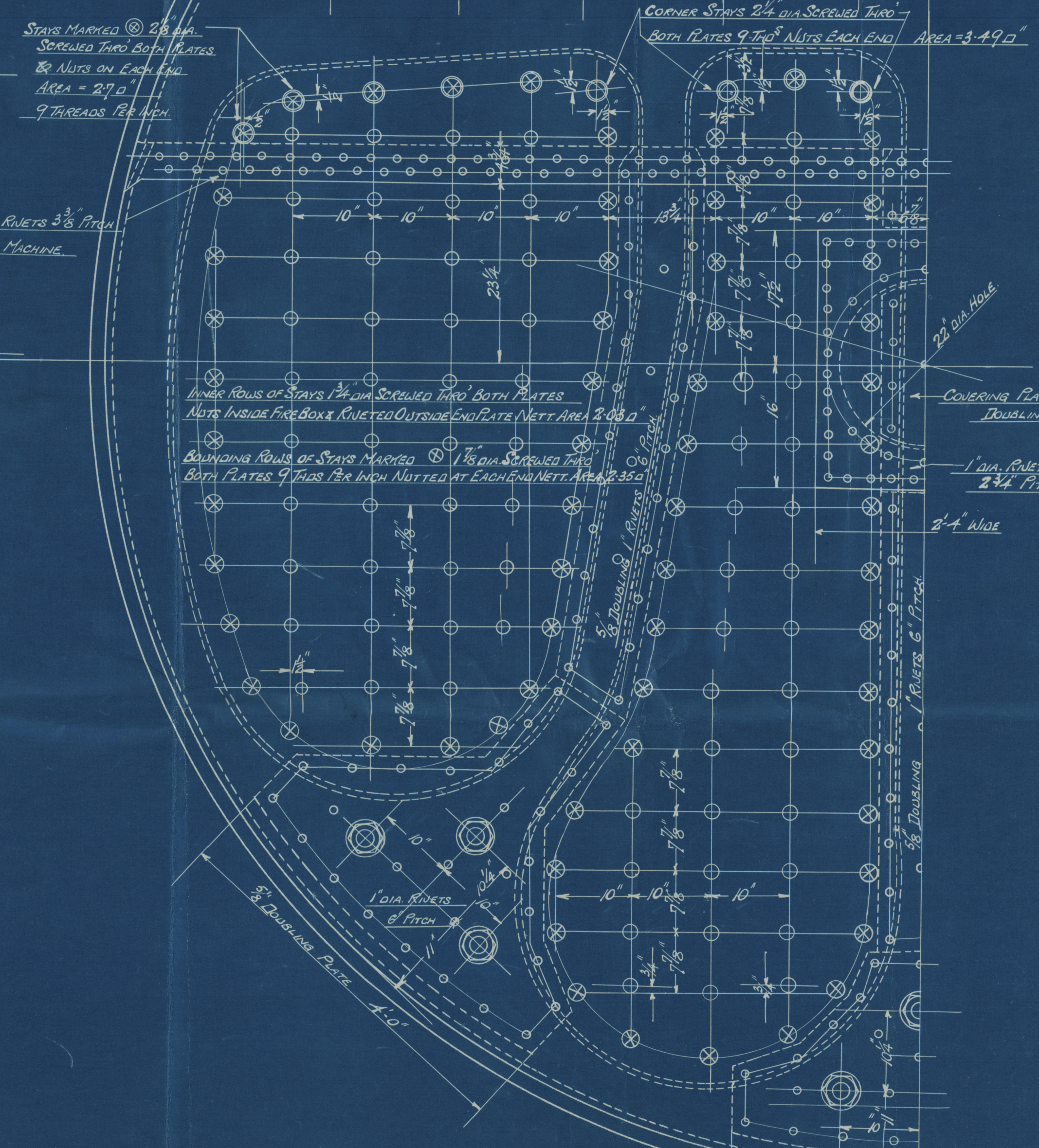
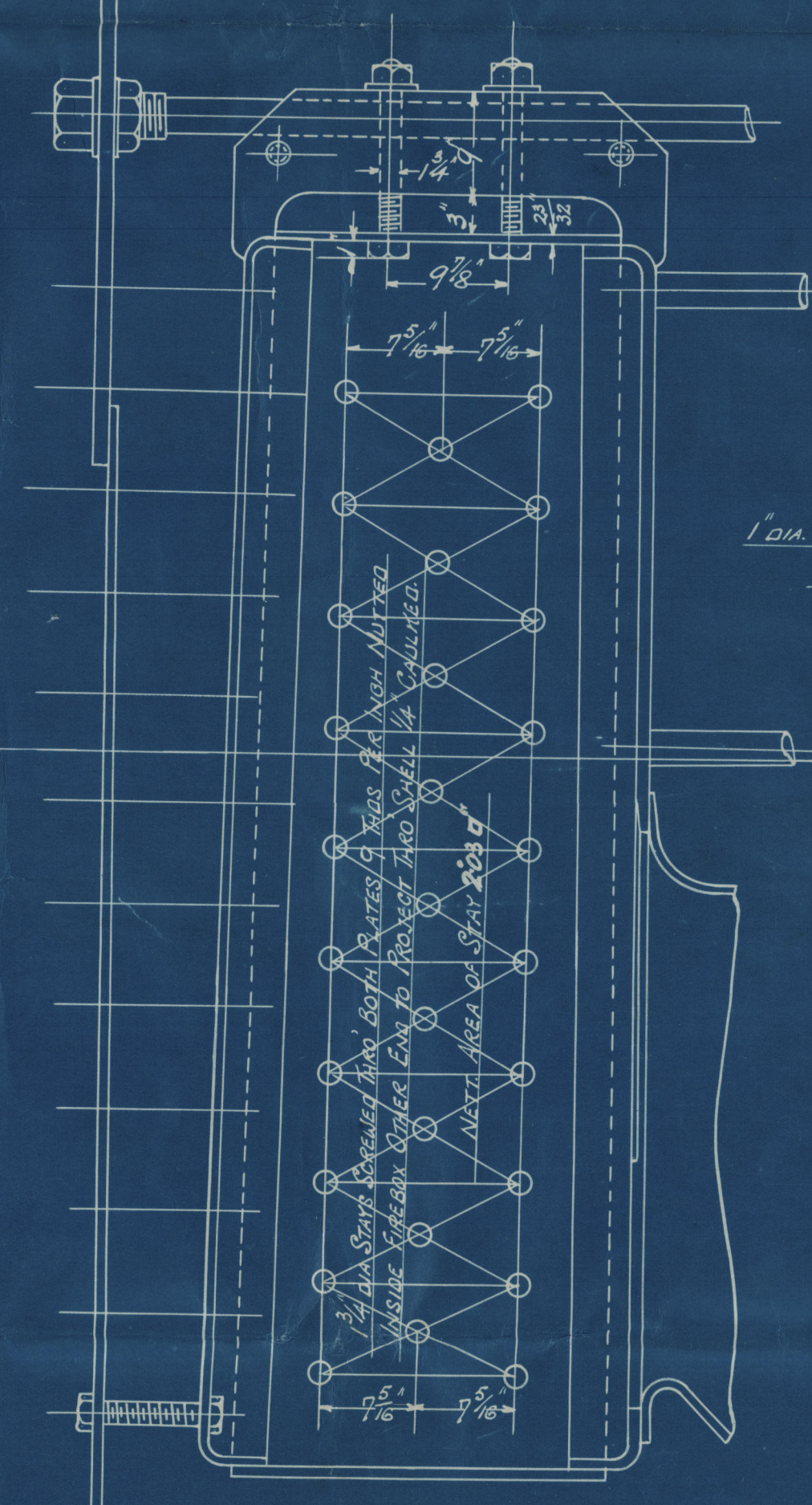
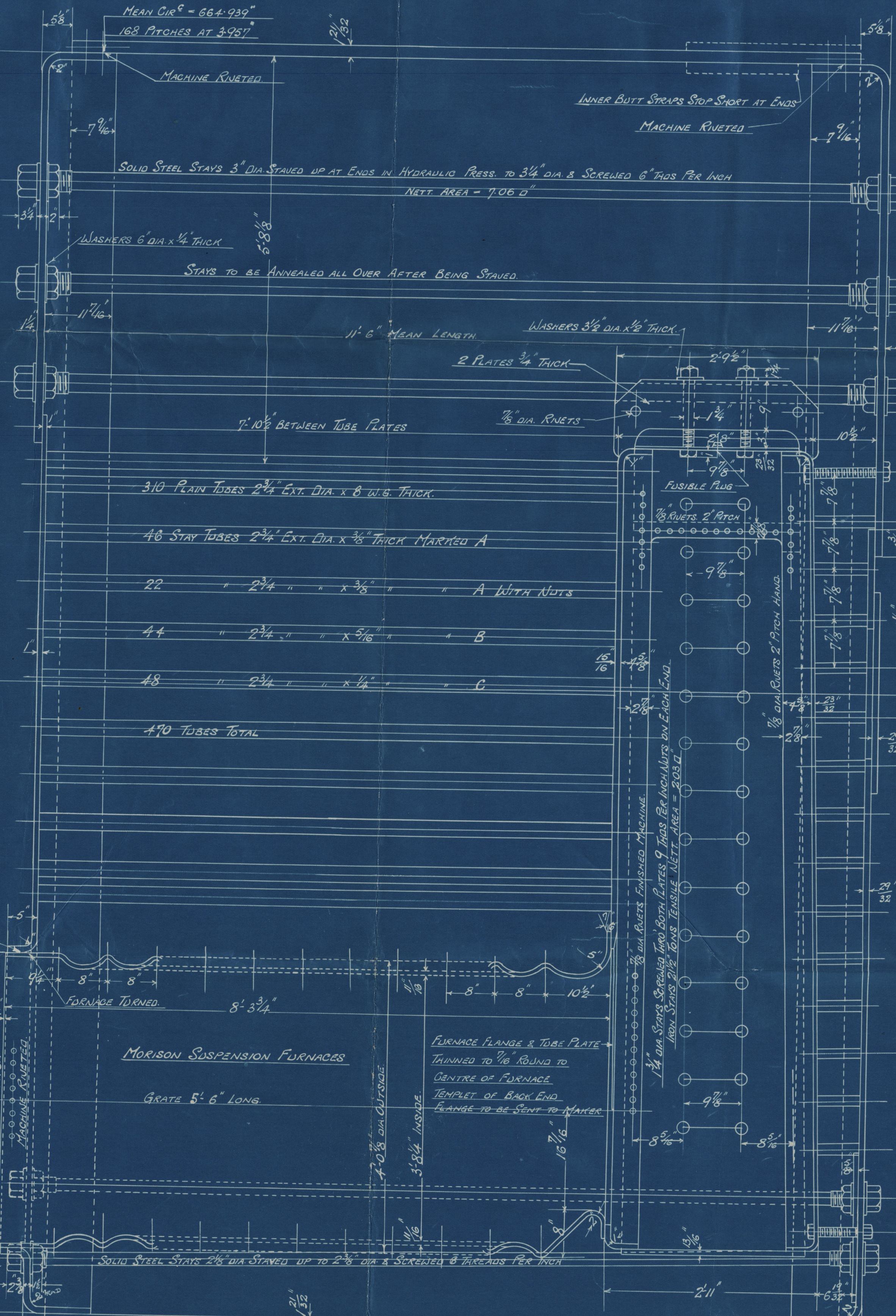
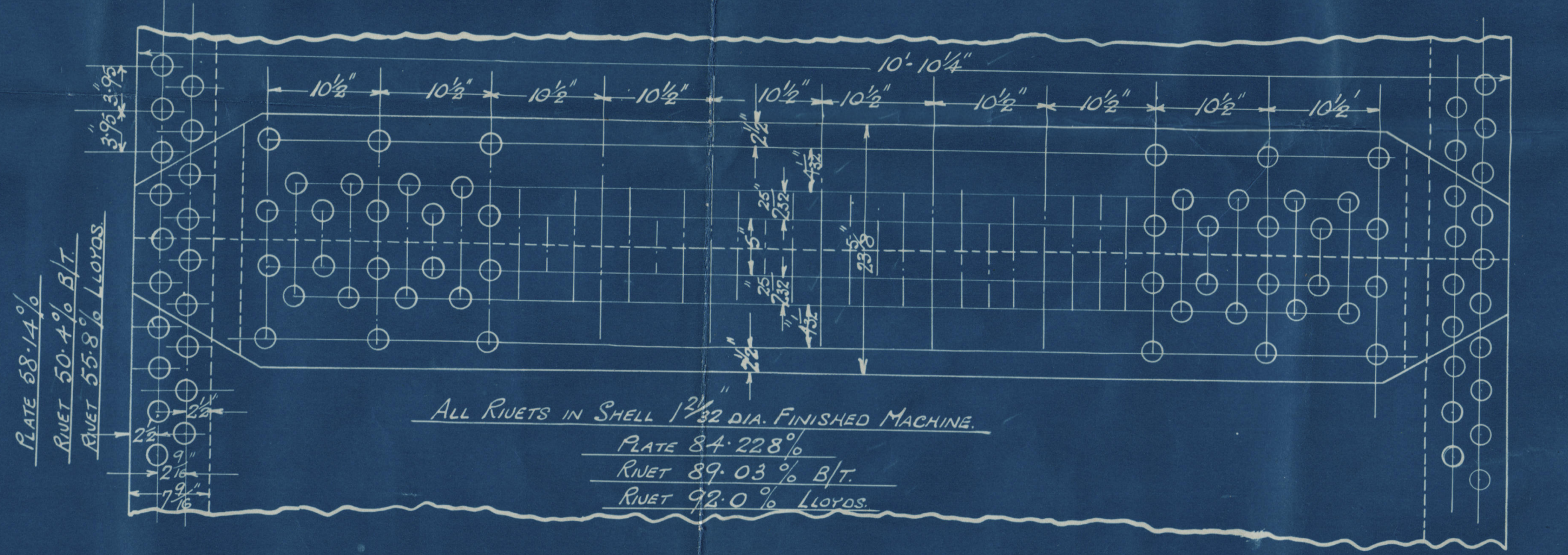
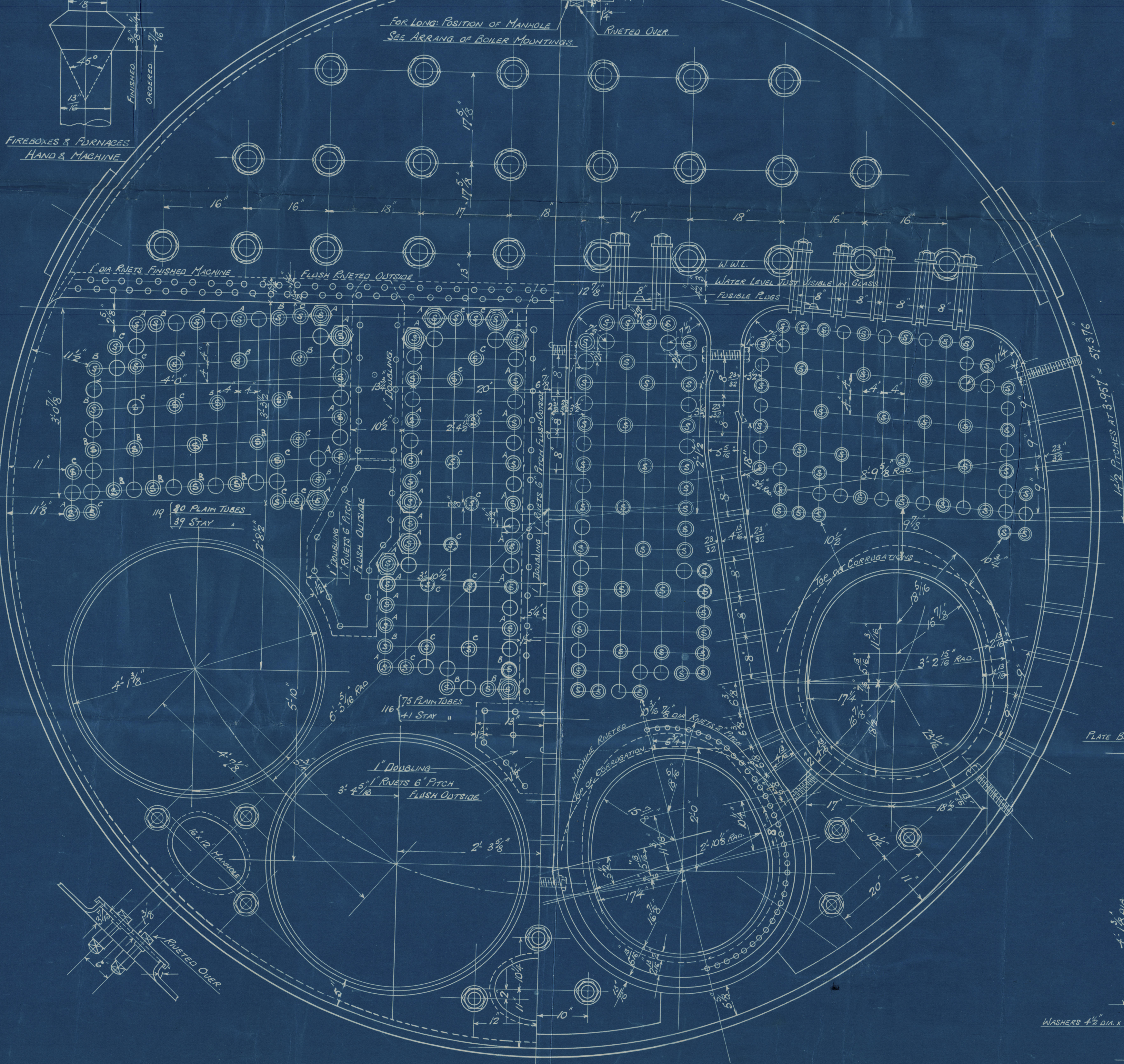
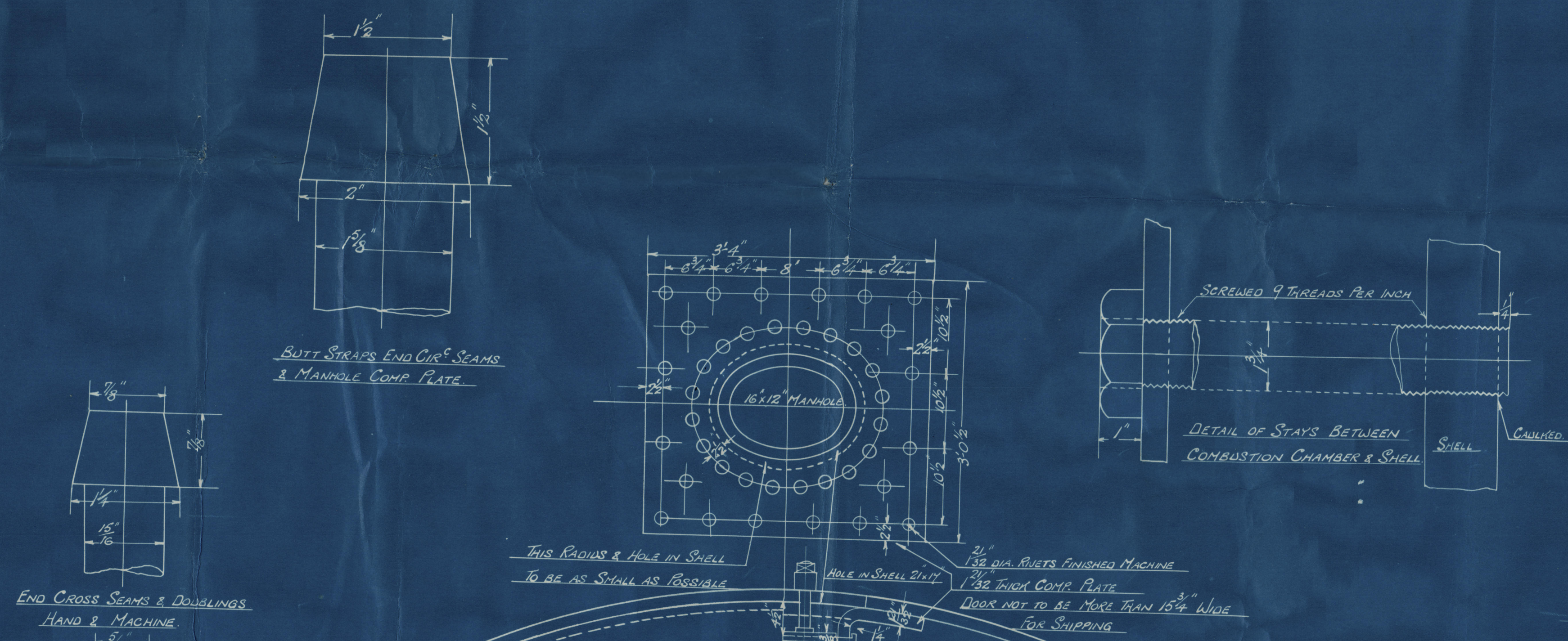
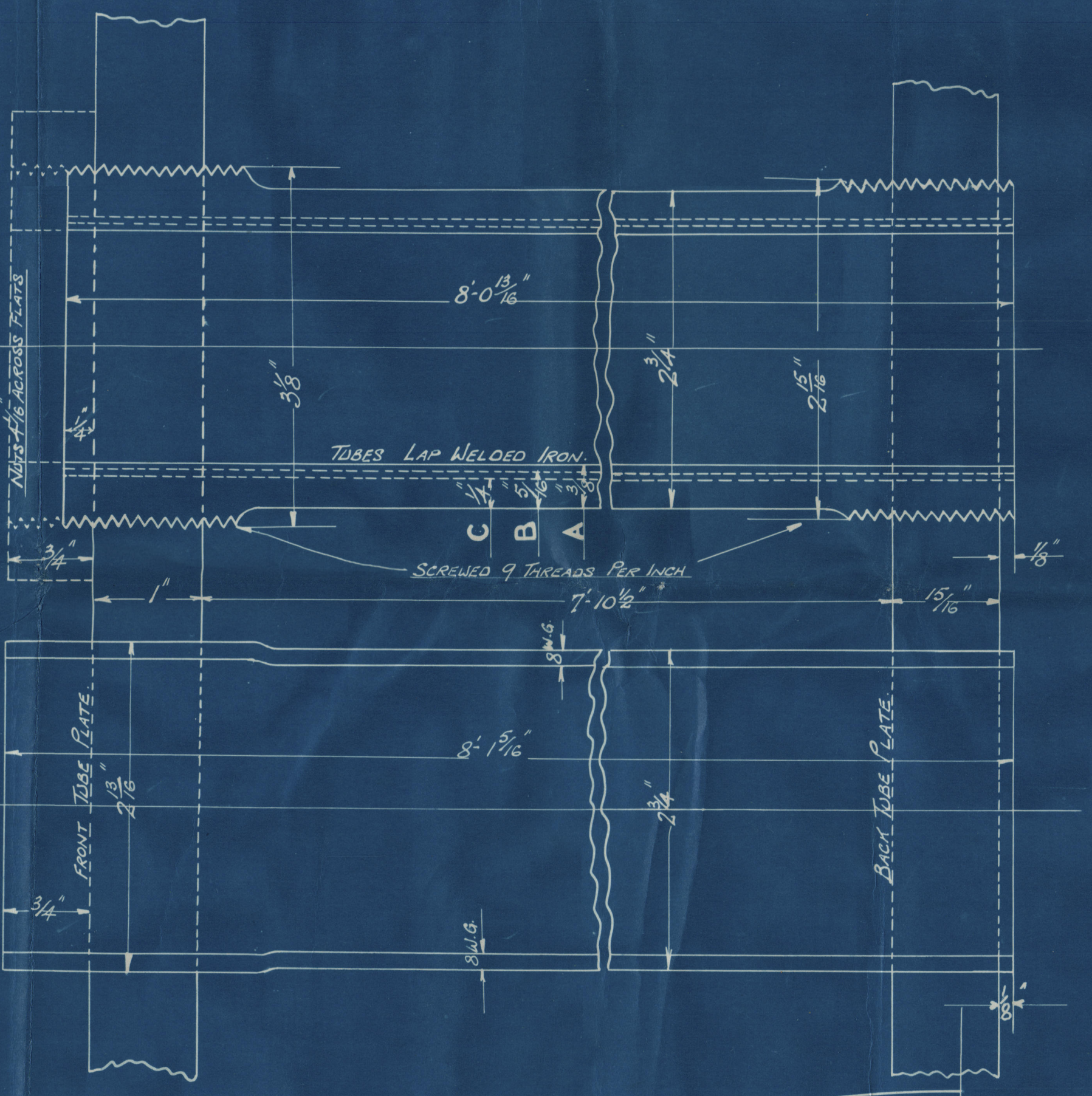
LIST OF LISTS FOR S.E. BOILERS

LETTER	DESCRIPTION	EXT. DIA.	INT. DIA.	THICK.	LENGTH	WEIGHT	REMARKS
A	310 Stay Tubes	2 1/2"	2 1/8"	3/16"	17' 6"	1,175	With Nuts
B	158 "	2 1/2"	2 1/8"	3/16"	17' 6"	585	No Nuts
C	112 "	2 1/2"	2 1/8"	3/16"	17' 6"	440	No Nuts

SHELL PLATES 1 1/2" THICK. BUTT STRAPS INNER 1 1/2" THICK. OUTER 1 1/8" THICK.
TO BE OF TRADE & LUGS REQUIREMENTS & TESTS.
WORKING PRESSURE 220 LBS PER SQ. INCH.
TEST 385.
STEEL THROUGHOUT EXCEPT TUBES & COMBUSTION CHAMBER STAYS WHICH ARE IRON.
ALL HOLES DRILLED IN SHELL AFTER BENDING.
TENSILE STRENGTH OF SHELL PLATES & BUTT STRAPS 30,000 LBS PER SQ. INCH ELONGATION 20% IN 8 INCHES.
GIRDER PLATES 28 TO 32.
END PLATES & FIREBOX PLATES 26 TO 30.
FIRE BOX SCREENED STAYS IRON 2 1/2" TENSILE ELONGATION 27% IN 8 INCHES.
PLATES SUPPLIED BY W.M. BEARDMORE, EXCEPT FIRE-BOX WRAPPERS, THESE BY J. SPENCER & SONS.

LIST OF STEEL PLATES FOR S.E. BOILERS

LETTER	THICK.	LENGTH	WIDTH	PURPOSE	TENSILE
A	1 1/2"	17' 6"	8' 0 1/2"	CENTRE FIREBOX PLATE	26 - 30
B	1 1/2"	17' 6"	8' 0 1/2"	" " " "	26 - 30
C	1 1/2"	17' 6"	8' 0 1/2"	" " " "	26 - 30
D	1 1/2"	17' 6"	8' 0 1/2"	" " " "	26 - 30
E	1 1/2"	17' 6"	8' 0 1/2"	CENTRE FIREBOX WRAPPER	26 - 30
F	1 1/2"	17' 6"	8' 0 1/2"	" " " "	26 - 30
G	1 1/2"	17' 6"	8' 0 1/2"	FRONT END TOP	26 - 30
H	1 1/2"	17' 6"	8' 0 1/2"	FRONT END BOTTOM	26 - 30
J	1 1/2"	17' 6"	8' 0 1/2"	BACK END TOP	26 - 30
K	1 1/2"	17' 6"	8' 0 1/2"	BACK END BOTTOM	26 - 30
L	1 1/2"	17' 6"	8' 0 1/2"	BACK END PLATE CENTRE	26 - 30
M	1 1/2"	17' 6"	8' 0 1/2"	FRONT END DOUBLING	26 - 30
N	1 1/2"	17' 6"	8' 0 1/2"	" " " "	26 - 30
O	1 1/2"	17' 6"	8' 0 1/2"	" " " "	26 - 30
P	1 1/2"	17' 6"	8' 0 1/2"	" " " "	26 - 30
Q	1 1/2"	17' 6"	8' 0 1/2"	" " " "	26 - 30
R	1 1/2"	17' 6"	8' 0 1/2"	" " " "	26 - 30
S	1 1/2"	17' 6"	8' 0 1/2"	FRONT END DOUBLING	26 - 30
T	1 1/2"	17' 6"	8' 0 1/2"	FRONT END DOUBLING	26 - 30
U	1 1/2"	17' 6"	8' 0 1/2"	FRONT END DOUBLING	26 - 30
V	1 1/2"	17' 6"	8' 0 1/2"	FRONT END DOUBLING	26 - 30
W	1 1/2"	17' 6"	8' 0 1/2"	FRONT END DOUBLING	26 - 30
X	1 1/2"	17' 6"	8' 0 1/2"	FRONT END DOUBLING	26 - 30
Y	1 1/2"	17' 6"	8' 0 1/2"	FRONT END DOUBLING	26 - 30



STEAM CAPACITY

ITEM	15.2 BOILER	3.2 BOILER	RATIO TO G.A.
GRATE AREA	82.02	1.88	45.2
HEATING SURFACE	2664.6	220.6	45.2
" " " "	211.57	163.71	45.2
" " " "	362.55	109.05	45.2
TOTAL A.S.	3240.22	477.25	39.06
AREA TWO TUBES	13.963	4.1889	64.5
AREA TWO TUBES	13.963	4.1889	64.5
STEAM CAPACITY	578	1734.6	6.96

DRAWING N° 493 / S2.

CUNARD STEAMER N° 493
S.E. BOILER. 28 OFF.
SCALE: 1" = 1 FOOT

ORDER N° 493

8/5/19

WILSON & JONES

VICKERS LTD

N° 498

SINGLE ENDED BOILERS

T.S.S. "Antonia"

Rpt. No 1957.



© 2021

Lloyd's Register
Foundation

W293-0020