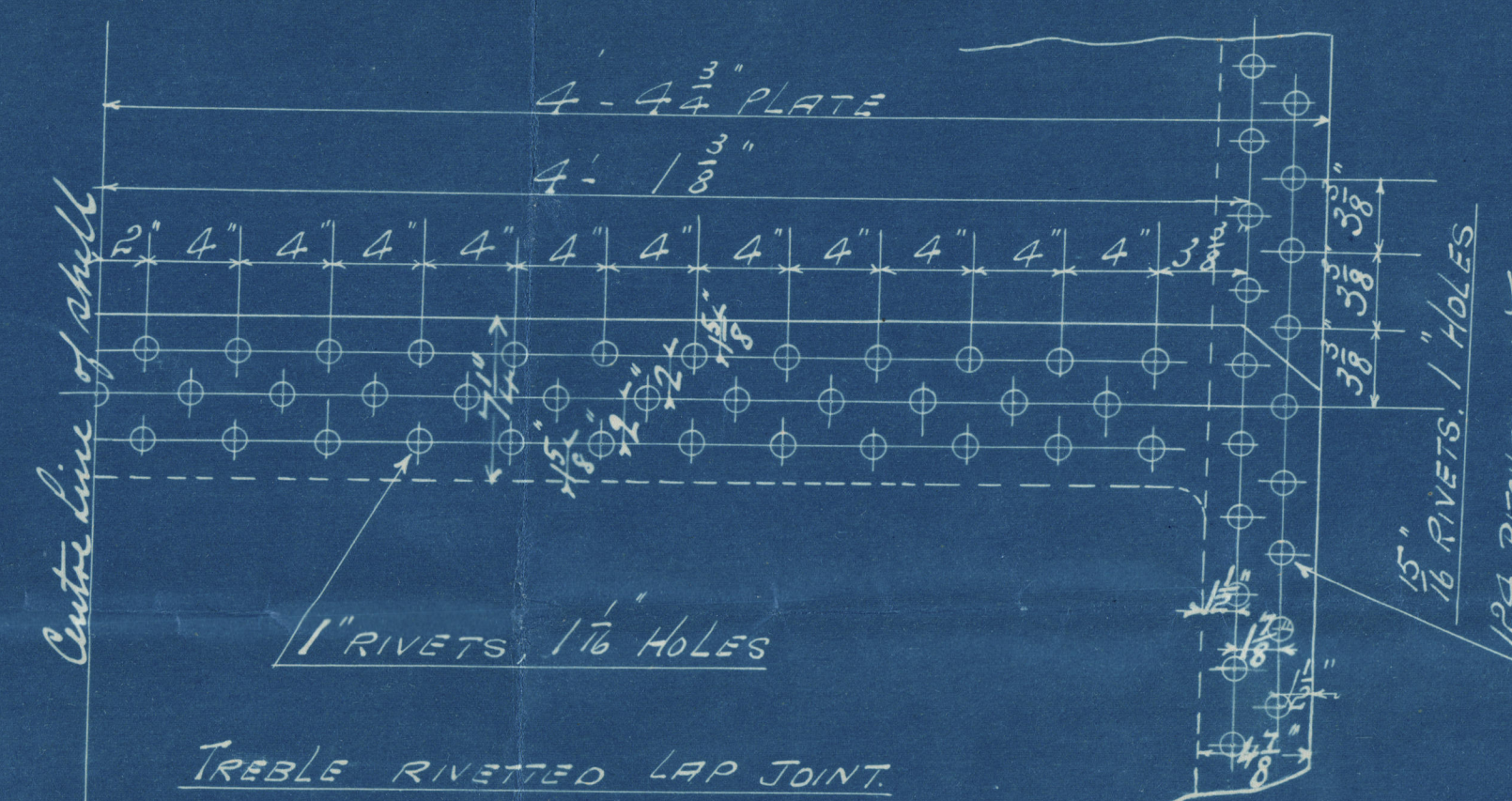


8.

1/2/15

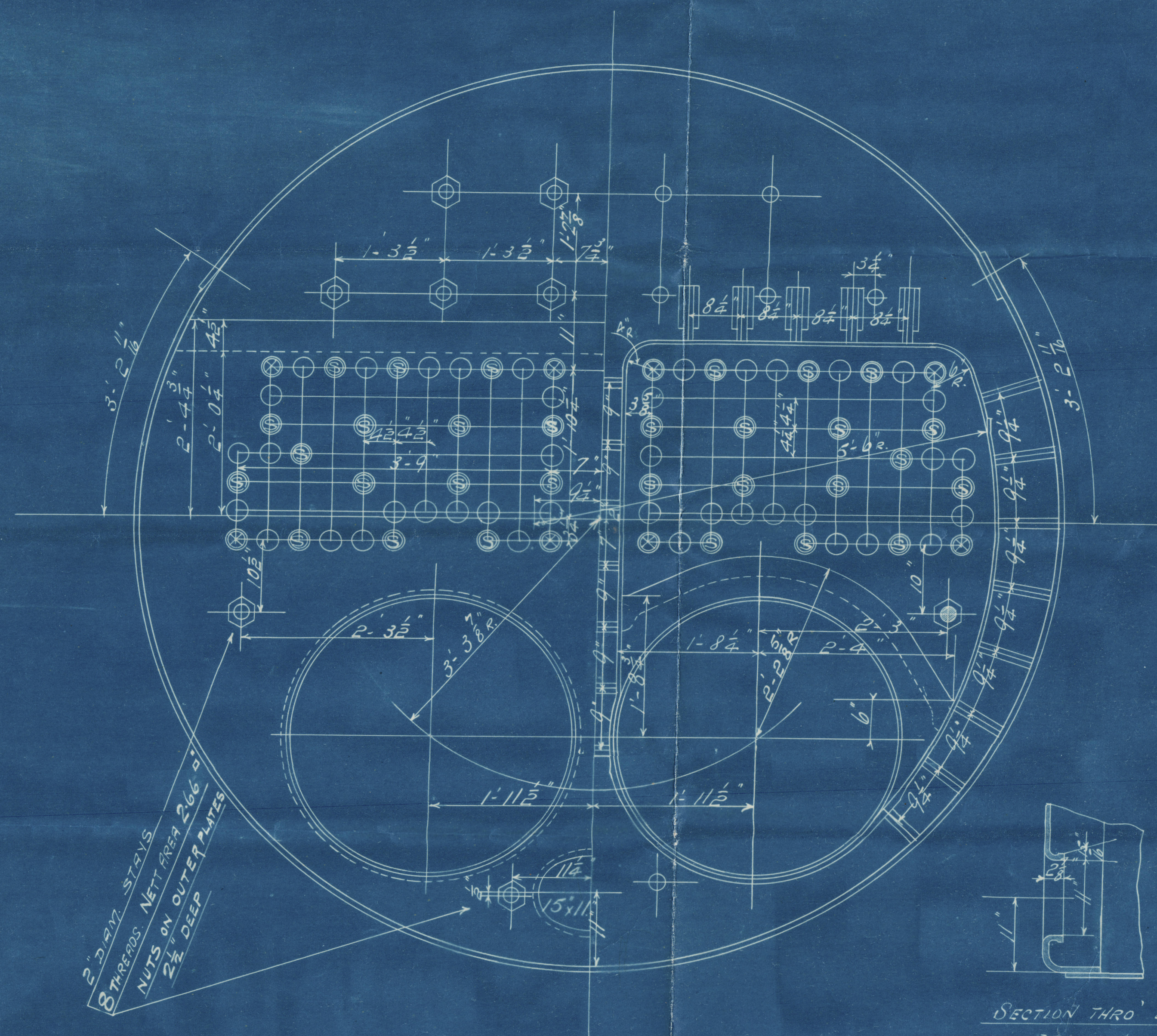
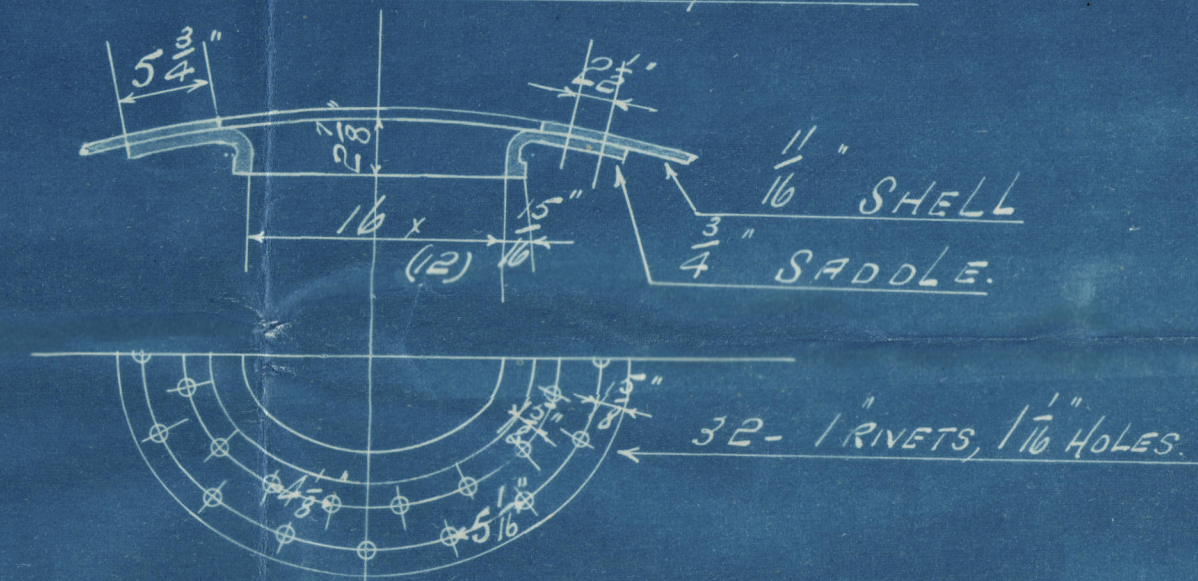
| PARTICULARS   |       |
|---|-------|
| HEATING SURFACE IN 144 TUBES                                  | 735 f |
| " " " COMB. CHS.  | 130 " |
| " " " RETURNES  | 46 "  |
| " " TOTAL   | 941 " |
| GRATE SURFACE (4.9 BARS)                                      | 32 "  |
| AREA THRO. TUBES.   | 5.4 " |
| RATIO $\frac{\text{HEATING SURFACE}}{\text{GRATE SURFACE}} =$ | 29.4  |
| " $\frac{\text{HEATING SURFACE}}{\text{AREA THRO. TUBES}} =$  | 5.92  |
| STEAM SPACE CUB. FEET.  | 186.  |



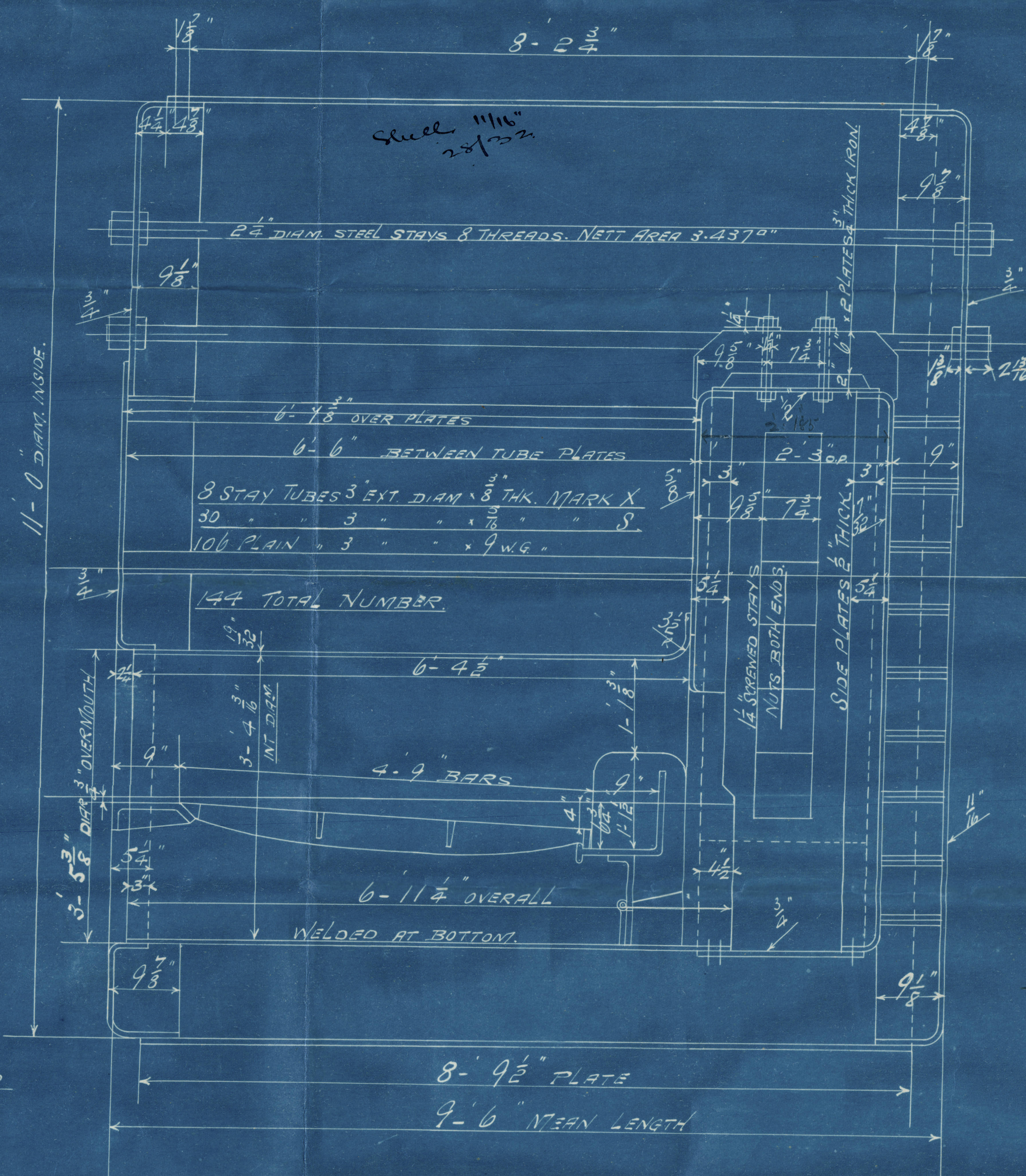
DETAIL OF SHELL RIVETING.  
SCALE: 1/2" = 1 FOOT.

| RIVETING &c  |                |
|--|----------------|
| LONGITUDINAL SEAM. TREBLE RIVETED LAP  | B.O.T. LLOYDS. |
| SHELL 1/8", RIVETS 1", HOLES 1 1/8", PITCH 4", PLATE 13.32, RIVETS 79.2% 82.0% |                |
| SHELL PLATES TO HAVE TENSILE STRENGTH OF 28 TO 32 TONS PER SQ. IN.             |                |
| CIRCUMFERENTIAL SEAMS (DOUBLE RIVETED LAP)                                     | B.O.T. LLOYDS. |
| RIVETS 1", HOLES 1 1/8", PITCH 3 1/2", PLATE 10.2% RIVETS 55.5% 57.2%          |                |
| ALL HOLES DRILLED IN PLATE, BOILER STEEL, TUBES AND COMB. CH. GIRDERS OF IRON  |                |
| UNDER BOARD OF TRADE & LLOYDS SURVEYS FOR A WORKING                            |                |
| PRESSURE OF 100 LBS. PER. SQ. INCH.  |                |

RIVETING AT SHELL MANHOLE.

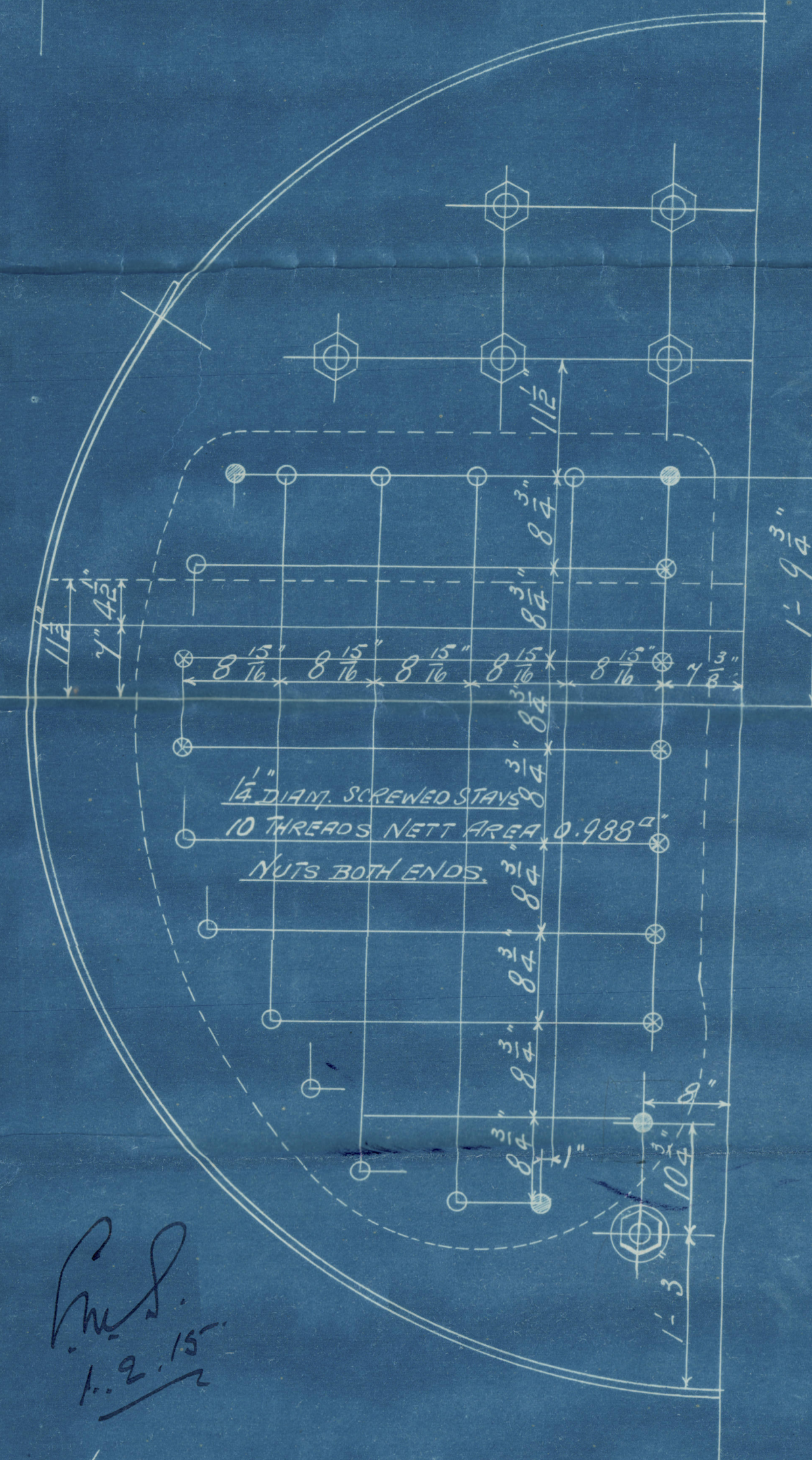


SECTION THRO' END  
MANHOLE



ONE DONKEY BOILER FOR N° 455.

SCALE 1" = 1 FOOT.



MARGINAL STAYS IN COMB. CH. BACK.  
MARKED 1/8" DIAM. 8 THREADS NETT AREA 1.69"  
" 1/2" " 10 " 1.475"  
" 1/8" " 10 " 1.22"  
ALL TO HAVE NUTS BOTH ENDS.

REPEAT FOR N° 456

REPEAT FOR N° 457

REPEAT FOR N° 458.

L.H.F. 28.1.15  
J.H.L. 26/4/15



W293-0121

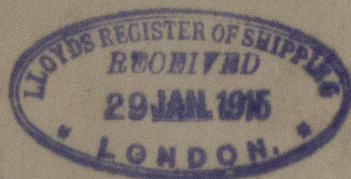
455-G-7-S



*Dunsmuir Jackson 10 1/2*

*Donkey Berlin No 453:6-7-8*

*MP 100th 24/1/15*



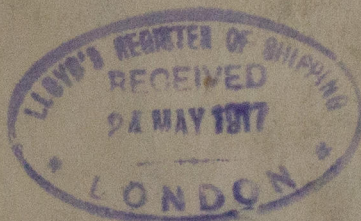
GLASGOW REPORT No. 36849



*9/ Glenuevis*  
*n.n. "Botlea"*

GLASGOW REPORT No. 36943

*9/ Gluncarron*



© 2021

Lloyd's Register  
Foundation

W293-0121