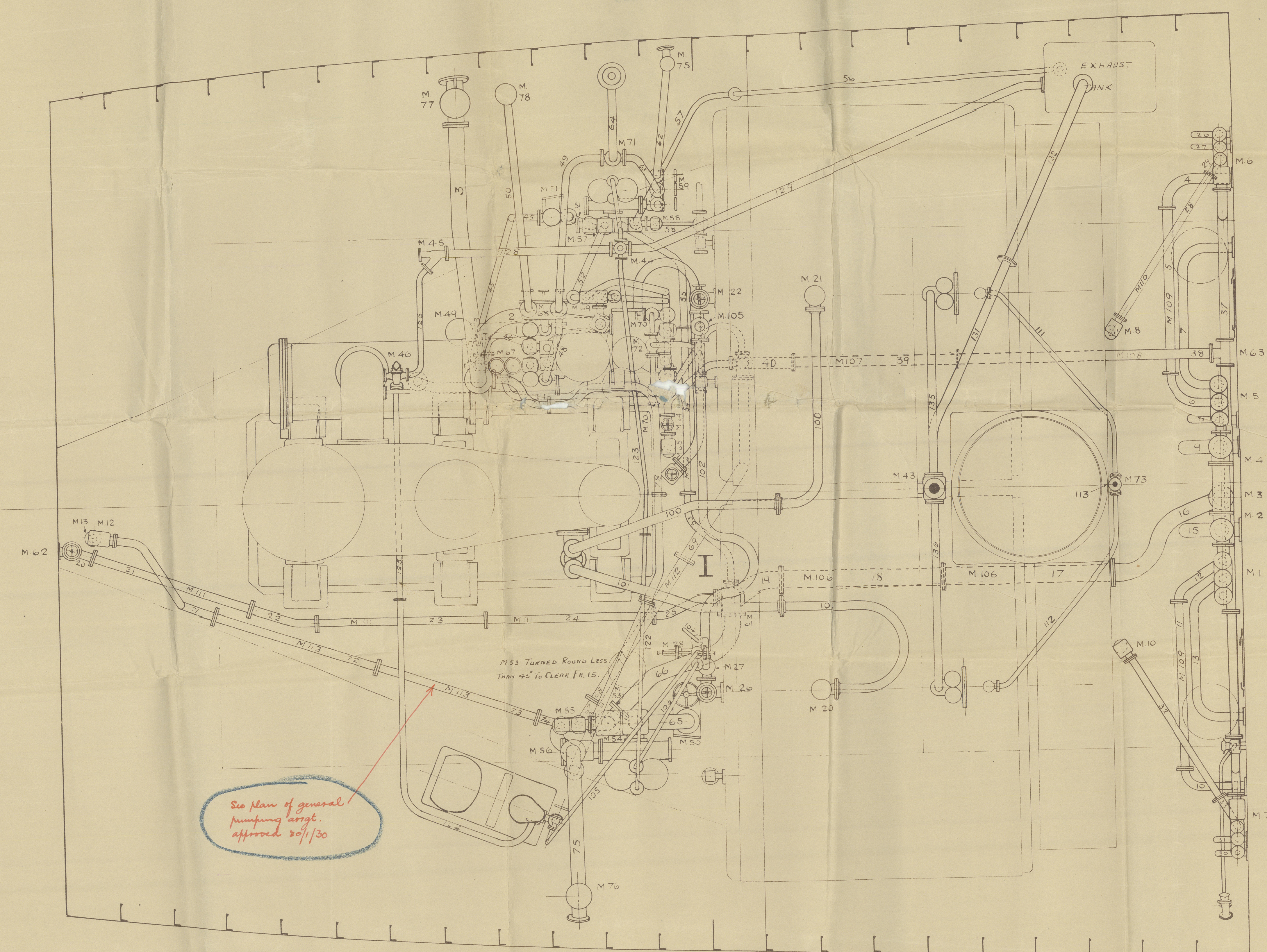
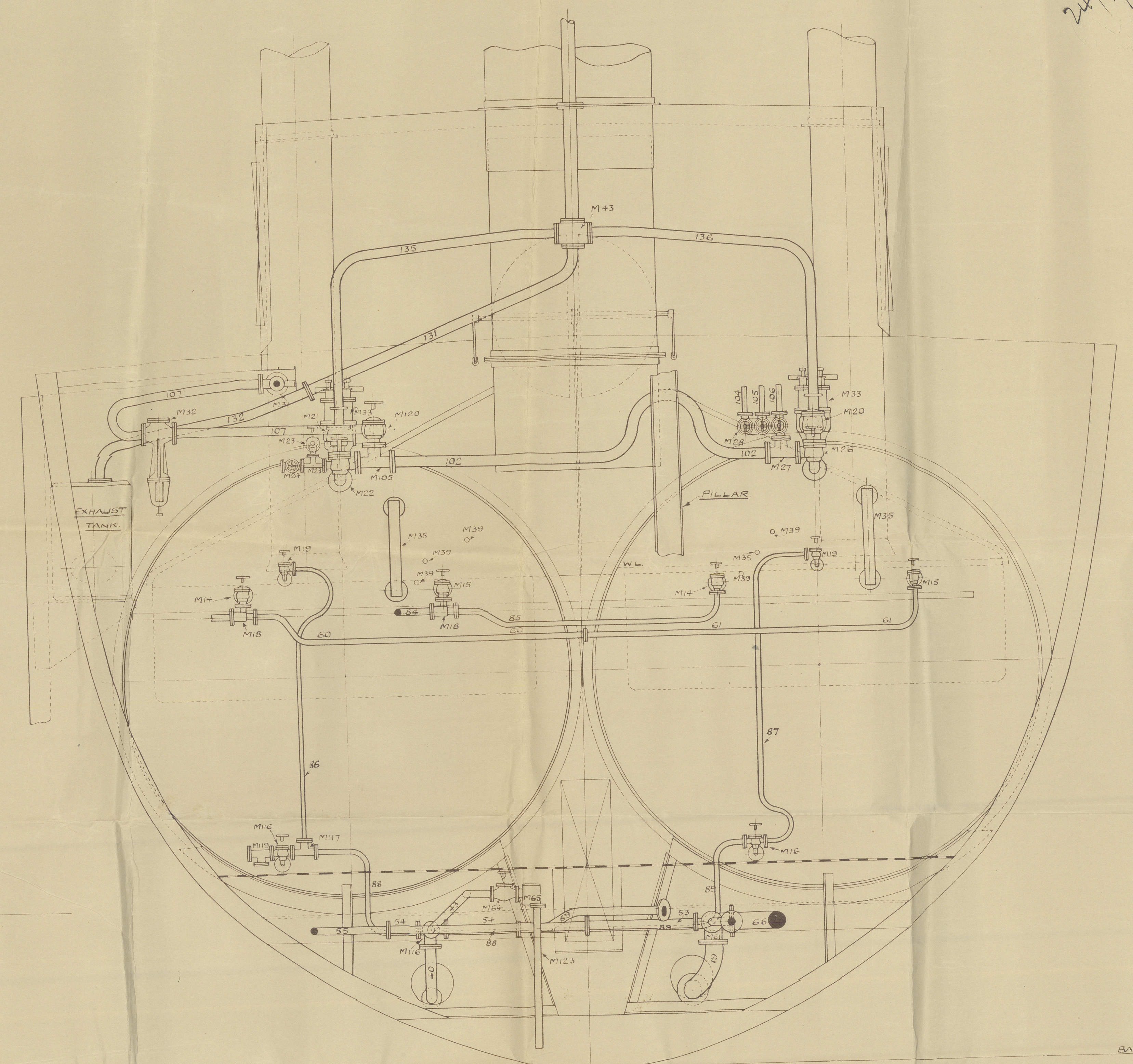


24/4/30

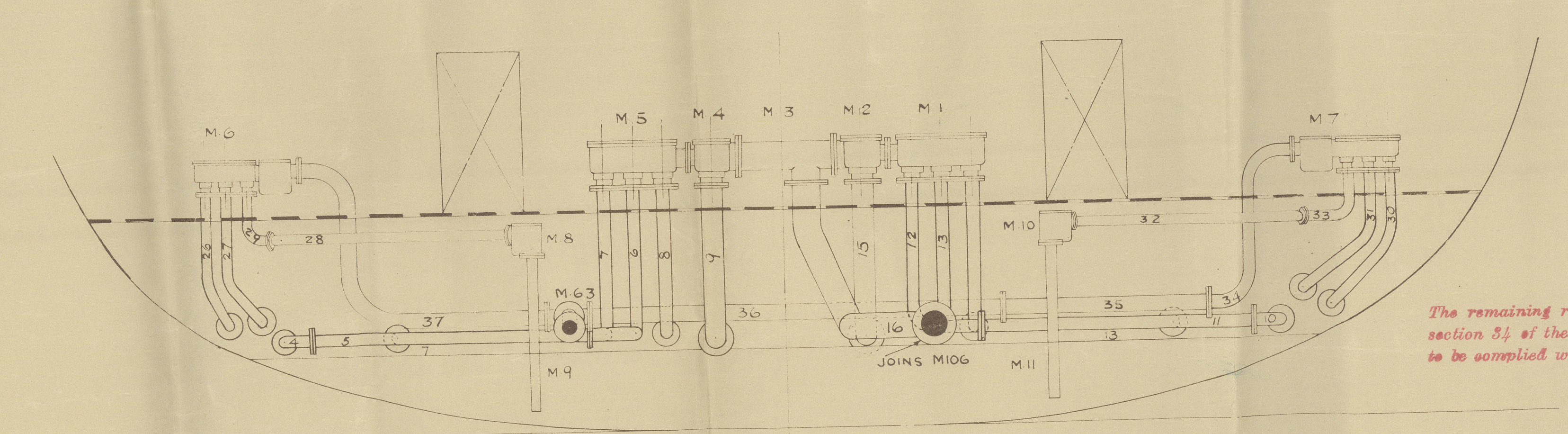


See plan of general
pumping arrangt.
approved 20/1/30

The combined capacity of the independent power driven
pumps connected to the main bilge line to be as
per Section 4, Clause 5(b) of the Rules for Engines & Boilers.



LOOKING FORWARD ON FRAME 17.

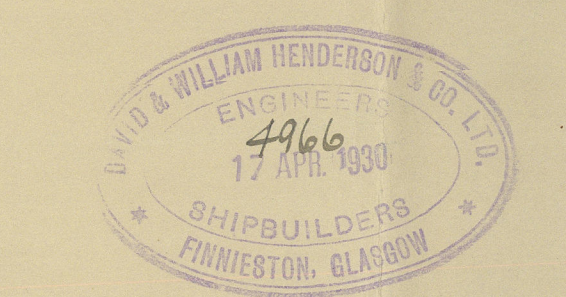


LOOKING FORWARD ON BULKHEAD 27.

Nº 900M - 90IM.

PIPE ARRANGEMENT.

SCALE: 1/2" = 1 FOOT.



3 SHEETS. SHEET Nº 1.

Lloyd's Register
Foundation

TRC Nº 40.

W3-0109

GLASGOW

D & W. HENDERSON & Co. L^d

ENGINES N^{os} 900-1

PUMPING ARRANGEMENT
IN
MACHINERY SPACE

Anglesea Rose

GLASGOW REPORT No. 50553



© 2020

Lloyd's Register
Foundation

W3-0109