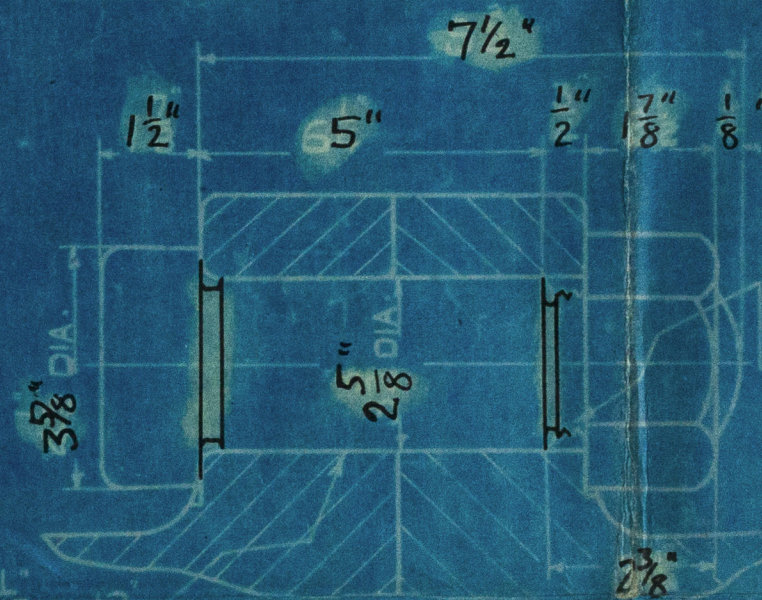
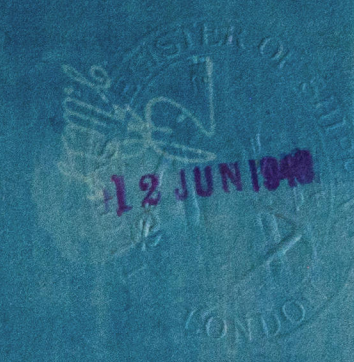


BOLTS 5/8" DIA. AT FACE OF COUPLING



PARALLEL BOLTS FOR AFT COUPLING. F.G.H.



THRUST & TUNNEL SHAFTING

CONTS Nos 1073-74-75-76-962

TIRG No 30325

SURVEY LEYDGE

PROPELLER & SHAFTING

— QUANTITY MARKED IS FOR ONE ENGINE. —

NO OFF SPARE	NO OFF WORKS	DESCRIPTION	MATERIAL	REMARKS
1	ONE	THRUST SHAFT.	FORGED INGOT STEEL	ORDERED OUTSIDE
6	6	PARALLEL COUPLING BOLTS	STEEL	COUPLINGS (AFT)
6	6	NUT FOR	W.I.	

ALL COUPLING BOLTS TO BE DRIVEN IN FROM AFT FOR FOR^D COUPLING. EXCEPT COUPLING "W" "V" "N" "V" FOR^D FOR AFT COUPLING.

FOR ARRANGEMENT OF SHAFTING SEE SEPARATE PRINT.



11/6/40

W30-0090

D. Ruwan abolet

(3)

1073-4-5-6

Thrust & tunnel shafting

1073 Empire Stream

GLASGOW REPORT NO

63492

1074 Empire Ridge

GLASGOW REPORT NO

63672

1075 Empire Ness

GLASGOW REPORT NO

63794

1076 Empire Moat

GLASGOW REPORT NO



63990

F.E. Galt. 21444.

Lloyd's Register
Foundation

W30-0090