

3. 4. 14
14. 8. 14
6. 8. 15

RULE EQUIPMENT	
NUMERICAL	35.85
SHELTER	10.5.8.1
DECK	24.7.1.8.1
HOUSE	1.9.1
2. BOILER	1.9.1
3. STREAM	1.9.1
4. HOUSE	1.9.1
5. PATHWAY	1.9.1
6. STEEL	1.9.1
7. HOUSE	1.9.1
8. HOUSE	1.9.1
9. HOUSE	1.9.1
10. HOUSE	1.9.1
11. HOUSE	1.9.1
12. HOUSE	1.9.1
13. HOUSE	1.9.1
14. HOUSE	1.9.1
15. HOUSE	1.9.1
16. HOUSE	1.9.1
17. HOUSE	1.9.1
18. HOUSE	1.9.1
19. HOUSE	1.9.1
20. HOUSE	1.9.1
21. HOUSE	1.9.1
22. HOUSE	1.9.1
23. HOUSE	1.9.1
24. HOUSE	1.9.1
25. HOUSE	1.9.1
26. HOUSE	1.9.1
27. HOUSE	1.9.1
28. HOUSE	1.9.1
29. HOUSE	1.9.1
30. HOUSE	1.9.1
31. HOUSE	1.9.1
32. HOUSE	1.9.1
33. HOUSE	1.9.1
34. HOUSE	1.9.1
35. HOUSE	1.9.1
36. HOUSE	1.9.1
37. HOUSE	1.9.1
38. HOUSE	1.9.1
39. HOUSE	1.9.1
40. HOUSE	1.9.1
41. HOUSE	1.9.1
42. HOUSE	1.9.1
43. HOUSE	1.9.1
44. HOUSE	1.9.1
45. HOUSE	1.9.1
46. HOUSE	1.9.1
47. HOUSE	1.9.1
48. HOUSE	1.9.1
49. HOUSE	1.9.1
50. HOUSE	1.9.1
51. HOUSE	1.9.1
52. HOUSE	1.9.1
53. HOUSE	1.9.1
54. HOUSE	1.9.1
55. HOUSE	1.9.1
56. HOUSE	1.9.1
57. HOUSE	1.9.1
58. HOUSE	1.9.1
59. HOUSE	1.9.1
60. HOUSE	1.9.1
61. HOUSE	1.9.1
62. HOUSE	1.9.1
63. HOUSE	1.9.1
64. HOUSE	1.9.1
65. HOUSE	1.9.1
66. HOUSE	1.9.1
67. HOUSE	1.9.1
68. HOUSE	1.9.1
69. HOUSE	1.9.1
70. HOUSE	1.9.1
71. HOUSE	1.9.1
72. HOUSE	1.9.1
73. HOUSE	1.9.1
74. HOUSE	1.9.1
75. HOUSE	1.9.1
76. HOUSE	1.9.1
77. HOUSE	1.9.1
78. HOUSE	1.9.1
79. HOUSE	1.9.1
80. HOUSE	1.9.1
81. HOUSE	1.9.1
82. HOUSE	1.9.1
83. HOUSE	1.9.1
84. HOUSE	1.9.1
85. HOUSE	1.9.1
86. HOUSE	1.9.1
87. HOUSE	1.9.1
88. HOUSE	1.9.1
89. HOUSE	1.9.1
90. HOUSE	1.9.1
91. HOUSE	1.9.1
92. HOUSE	1.9.1
93. HOUSE	1.9.1
94. HOUSE	1.9.1
95. HOUSE	1.9.1
96. HOUSE	1.9.1
97. HOUSE	1.9.1
98. HOUSE	1.9.1
99. HOUSE	1.9.1
100. HOUSE	1.9.1

354.85
25.20
1.91
35.85 (Whitcomb 20' 9" x 7' 9" 1/2)
2.75 (Caring 72' 10" 1/2 x 7' 6" 1/2)
1.98 75
38806.25

NO 590 55
RULE MIDSHIP SECTION
420 x 53-3 x 30-6 LP 30-9 AMIDSHIPS
TO CLASS 100 A1 LLOYDS
SCALE 1/2" = 1 FT

NUMERICALS	
BREADTH	53.15
DEPTH	31.15
1ST NO	4.150
LENGTH	419.75
2ND NO	35.465
3RD	40.69
4TH	10.68

SEE SPECIFICATION FOR COMPLETE LIST OF OWNERS' DETAILS

FORECASTLE
SHEEL 42 DOUBLE DW.
BEAMS 6.3.40 BA EVERY 2.00M
UNITS 7.1.42
STOWAGE 35.36 DOUBLE DW.
DECK 35.35-36
STEEL 30 SINGLE DW.

N 41' x 10' 46
QUAD DW 1/2 DOUBLE 68 x UNDER

M 51' x 10' 46
QUAD DW 1/2 DOUBLE ENDS

L 71' x 10' 46
DOUBLE DW. F-A

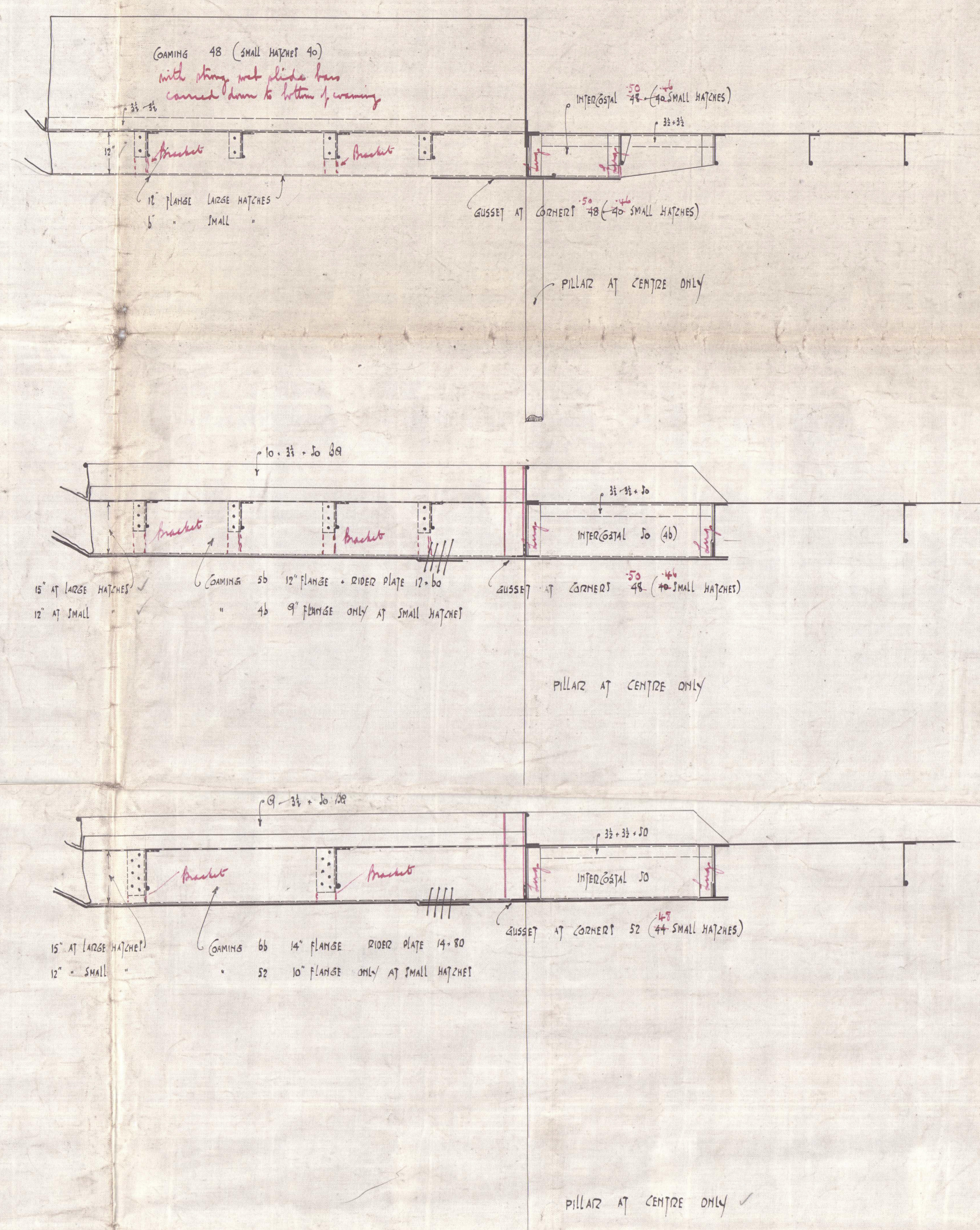
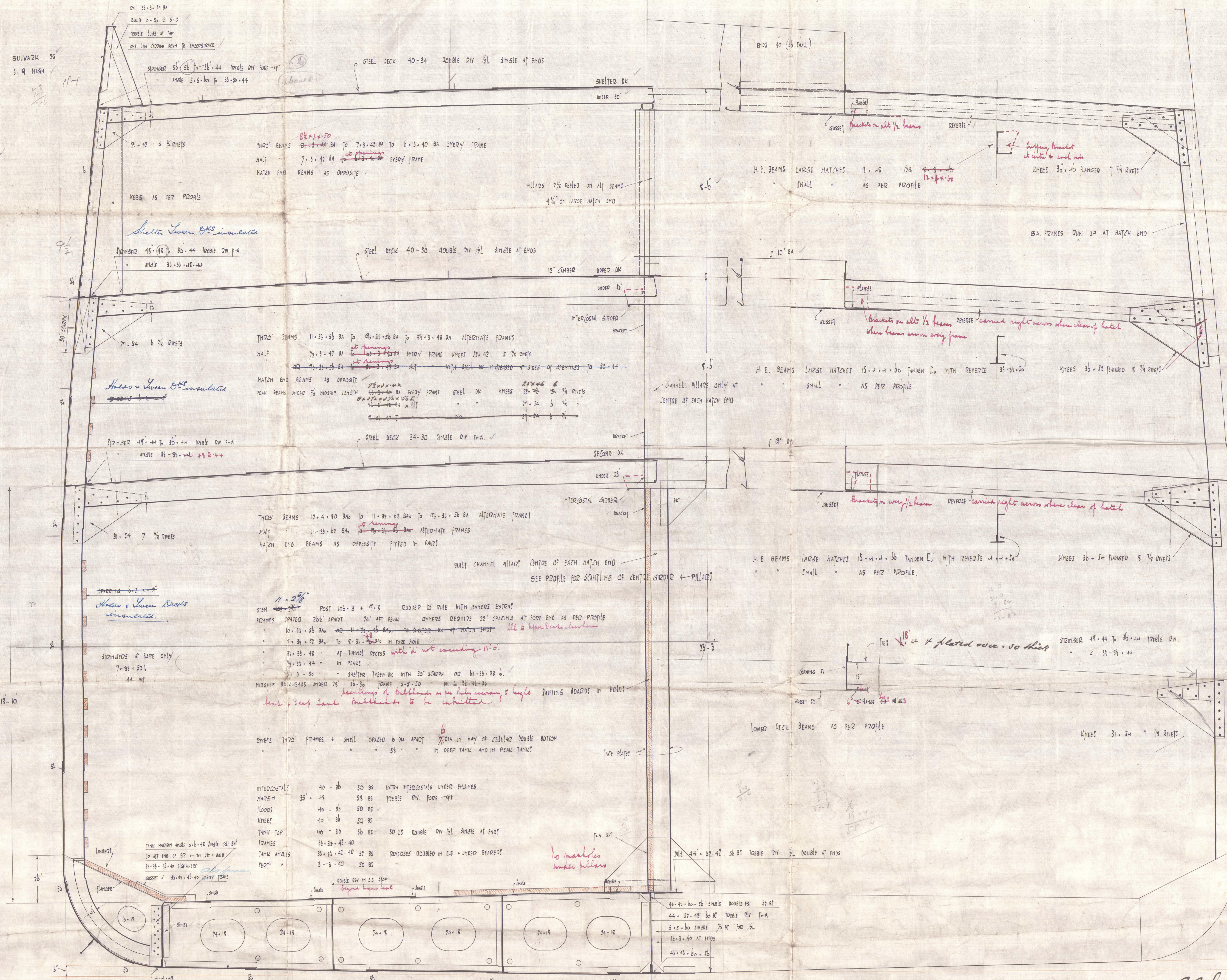
K 71' x 10' 46
DOUBLE DW. F-A

J 71' x 10' 46
DOUBLE DW. F-A

H 71' x 10' 46
DOUBLE DW. F-A

G 71' x 10' 46
DOUBLE DW. F-A

F 71' x 10' 46
QUAD DW 1/2 DOUBLE ENDS



For details of Girders, pillars, & Frames
See detail plans

Bottom PLATING QUAD DW 1/2 DOUBLE AT ENDS
REDUCED 02 IN WAY OF DOUBLE BOTTOM 64-48
VESSEL IS OF FINE FORM. Bottom to be strengthened forward as per Rules

3. 4. 14
24. 3. 14



Miss L. R. Dixon Clerk

No 390

Mid: Sec:

Amended

"Elstree Grange"

of Abadesa

Ind Rpt 92/4

Elstree Grange

W30-0119



© 2020

Lloyd's Register
Foundation