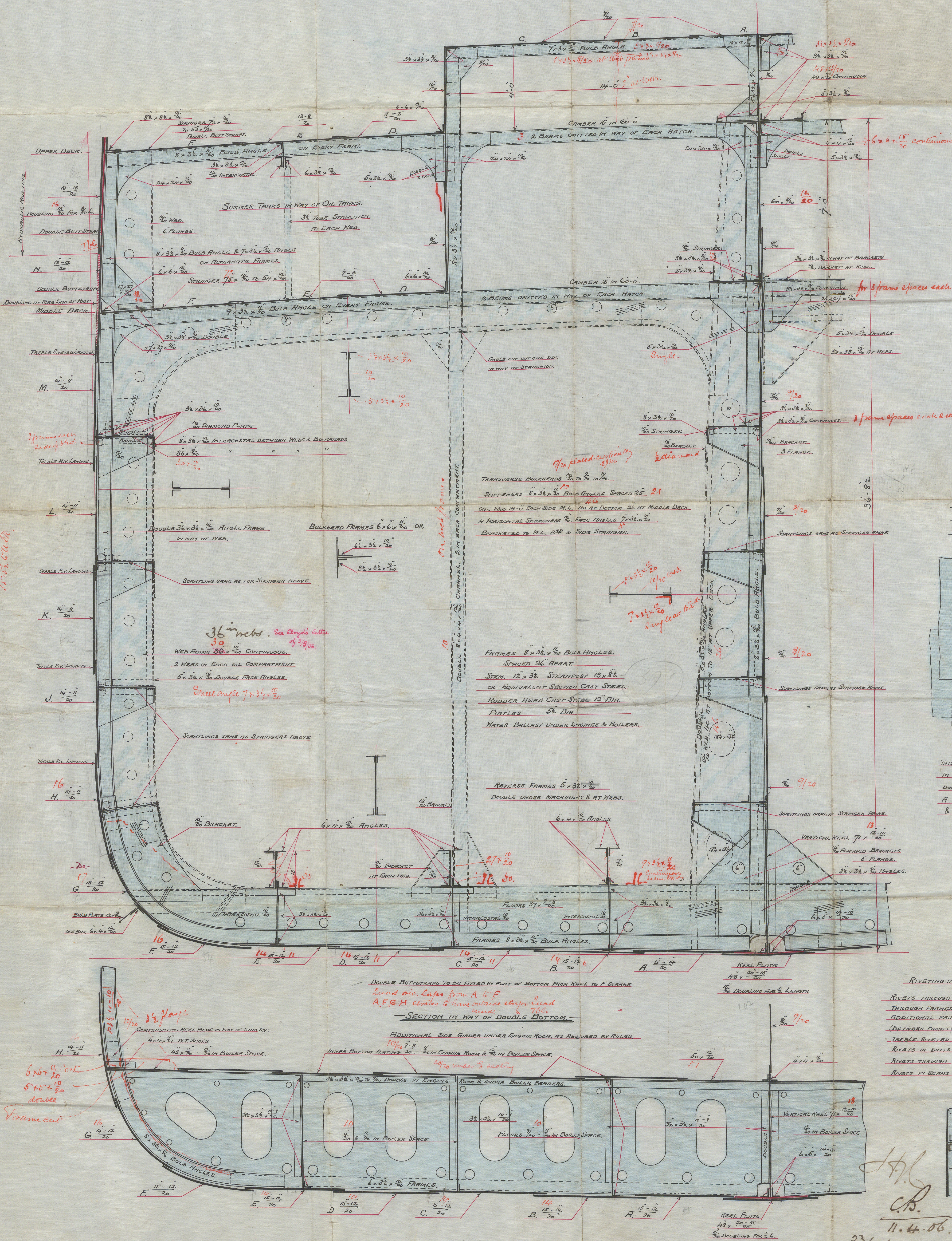


12.4.06

MIDSHIP SECTION
PROPOSED OIL TANK STEAMER
 DIMENSIONS 476'-0" x 60'-0" x 36'-8" (KEEL TO BEAM)
 TO CLASS 100 A.I. AT LLOYD'S THREE DECK RULE
 SCALE 1" = 1 FOOT
 NUMERALS
 $30 \cdot 0 \times 62 \cdot 46 + 36 \cdot 71 - 7 = 132 \cdot 17 = \text{FRAMING 17\#}$
 $132 \cdot 17 \times 473 \cdot 92 = 57899 = \text{PLATING 17\#}$
 $132 \cdot 17 \times 473 \cdot 92 + 4164 = 65380 = \text{EQUIPMENT 17\#}$
 BREADTH TO LENGTH = 7.89
 DEPTH TO LENGTH = 12.91

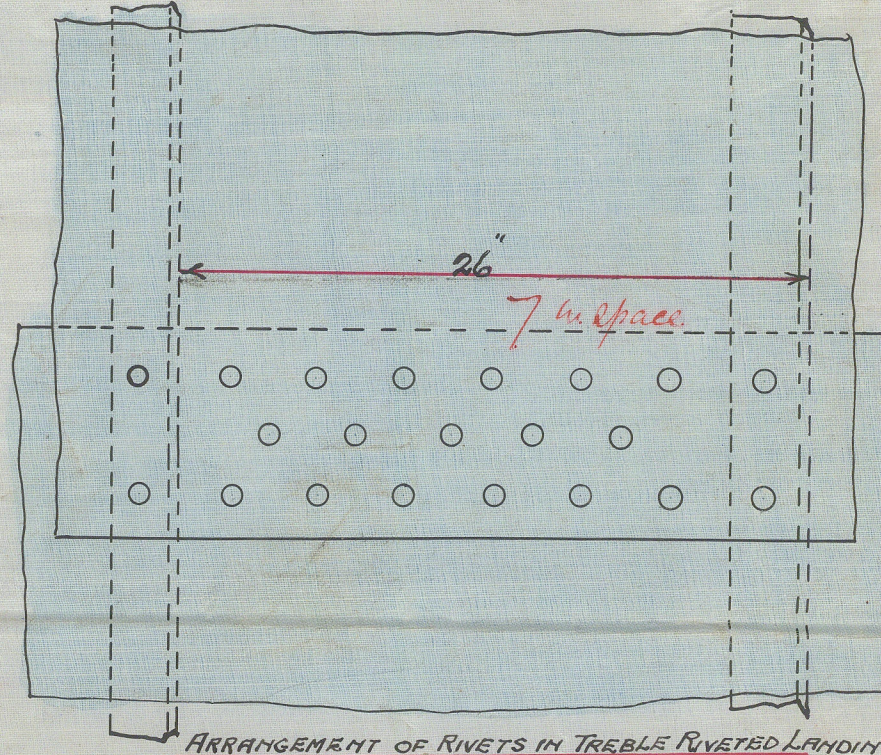
Yard No. 385

23.4.06
 11.4.06
 23/4/06

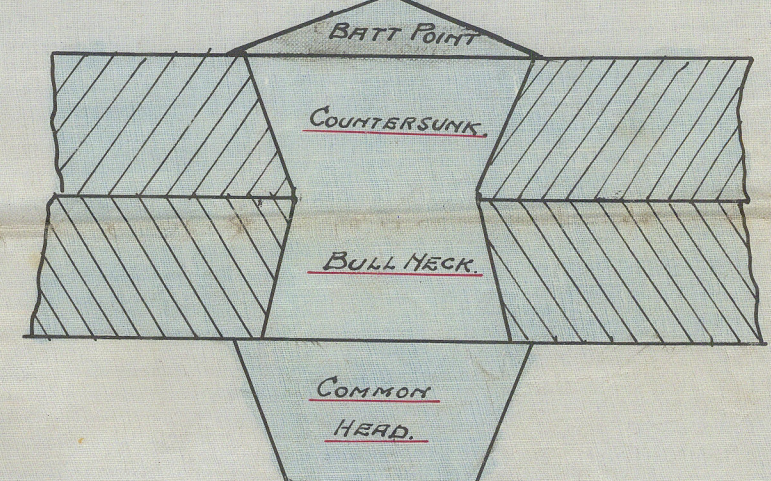


EQUIPMENT

ITEM	QUANTITY	UNIT	TOTAL WEIGHT
2 BOWER ANCHORS 8 1/4 CWT. STOCKLESS	2	CWT.	16 CWT.
1 STEAM " 23 1/2 " EX. STOCK	1	"	23 1/2 CWT.
1 KEDGE " 11 " " "	1	"	11 CWT.
300 FATHOMS STUDD LINK CHAIN CABLE 2 1/2 "	300	FATHOMS	150 CWT.
120 " 1 1/2 " STEAM CHAIN OR 5/8" STEEL WIRE	120	"	60 CWT.
130 " 1 1/2 " HEMP TOWLINE OR 6 " "	130	"	65 CWT.
4 @ 100 FATHOMS 8 HANSELS AS: WARPS	4	"	40 CWT.
TOTAL			232 CWT.

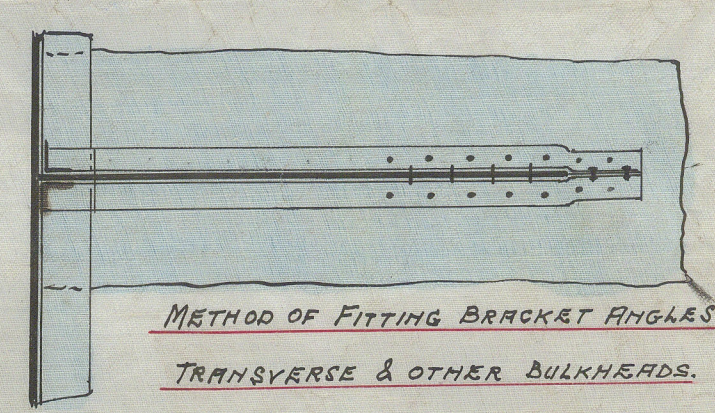


HYDRAULIC RIVETING.
 THIS TO BE CARRIED OUT AS FAR AS POSSIBLE
 IN MAKING THE CONNECTIONS OF KEEL PLATE &
 DOUBLING, VERTICAL KEEL, KEEL ANGLES, POOR BRACKETS,
 A STRAKE, SHEER STRAKE, WEB FRAME (SHELL ANGLES),
 & BOTTOM KEELSONS.



RIVETING IN WAY OF OIL COMPARTMENTS.

- RIVETS THROUGH FRAMES & PLATING 5" DIAS. APART.
- THROUGH FRAMES & FLOORS 6" DIAS. APART. 2 1/2" ZIG-ZAG.
- ADDITIONAL PAIR OF RIVETS IN LANDING EDGES.
- (BETWEEN FRAMES) OF OUTSIDE PLATING, EXCEPT IN WAY OF
- TREBLE RIVETED LAMINGS.
- RIVETS IN BUTTS OF SHELL PLATING 3 1/2" DIAS. APART.
- RIVETS THROUGH BEAMS & DECK PLATING 6" DIAS. APART.
- RIVETS IN GAINS & BUTTS OF DECK PLATING 3 1/2" DIAS. APART.



Messrs Harland & Wolff Ltd

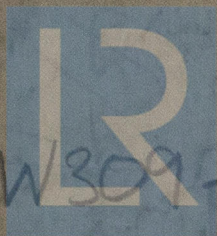
Proposed TSS to
"Carry Oil in Bulk"

Midship Section

Yard No 385

"Troquois"

Rpt No 6376



© 2021

Lloyd's Register
Foundation