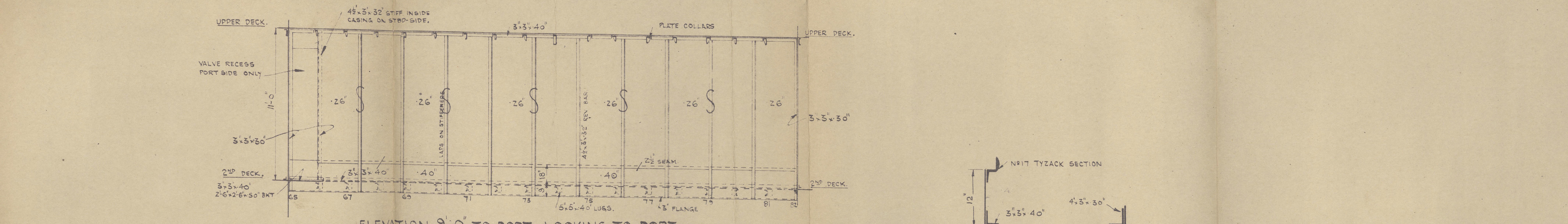
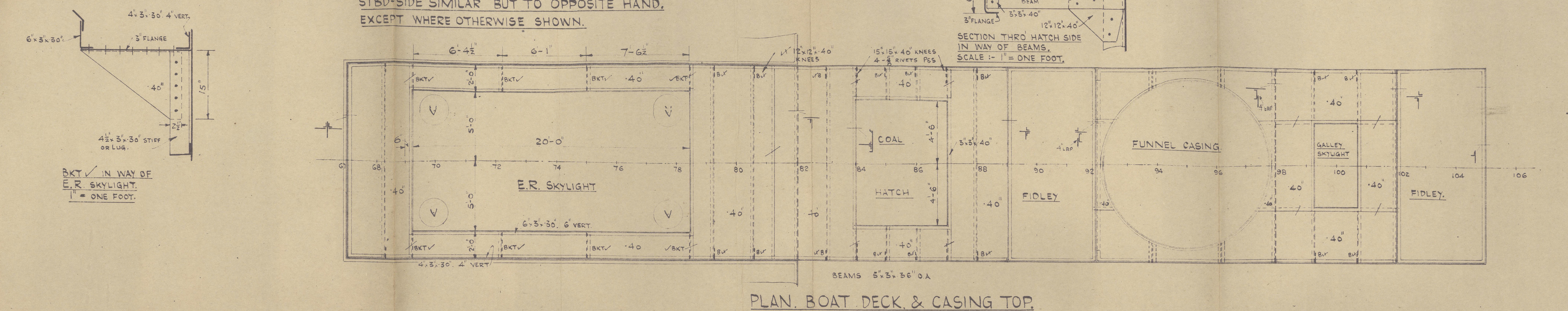


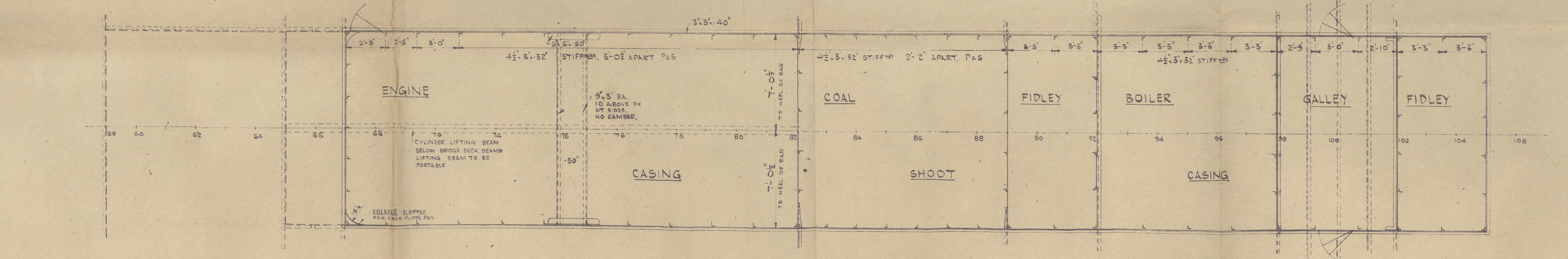
ELEVATION 7'-0" TO PORT, LOOKING TO PORT.
STBD-SIDE SIMILAR, BUT TO OPPOSITE HAND
EXCEPT WHERE OTHERWISE SHOWN.



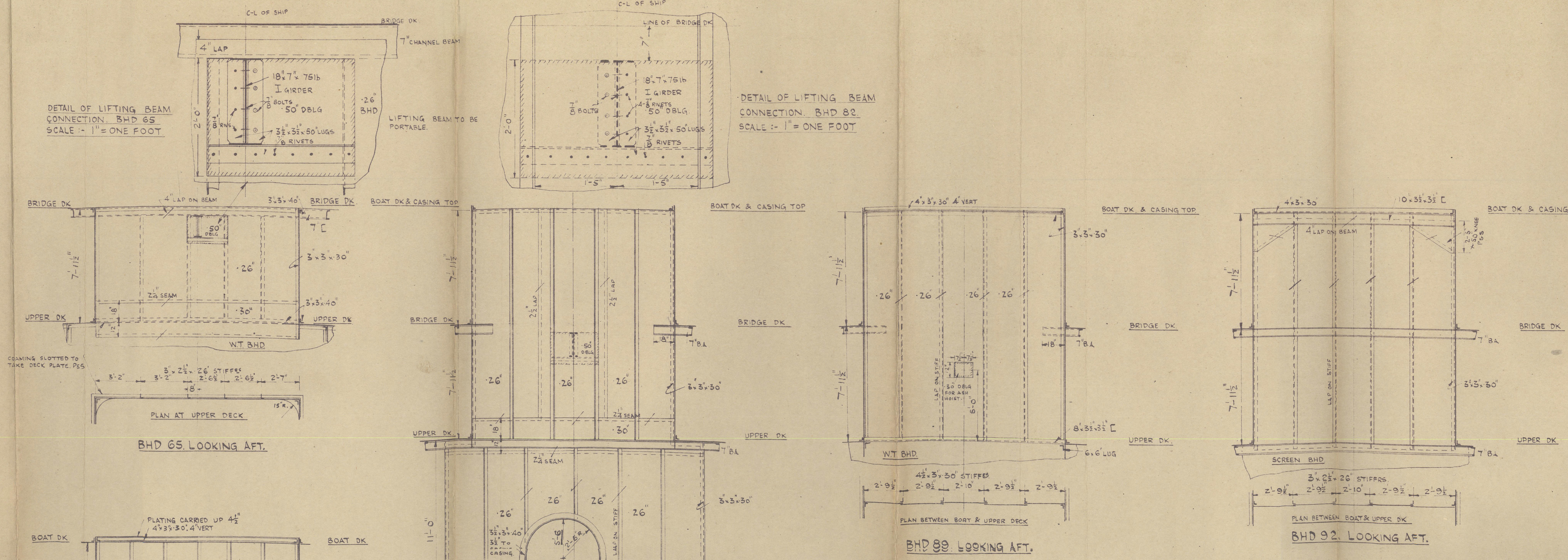
ELEVATION 9'-0" TO PORT, LOOKING TO PORT.
STBD-SIDE SIMILAR, BUT TO OPPOSITE HAND,
EXCEPT WHERE OTHERWISE SHOWN.



PLAN, BOAT DECK & CASING TOP.



PLAN BRIDGE DECK.

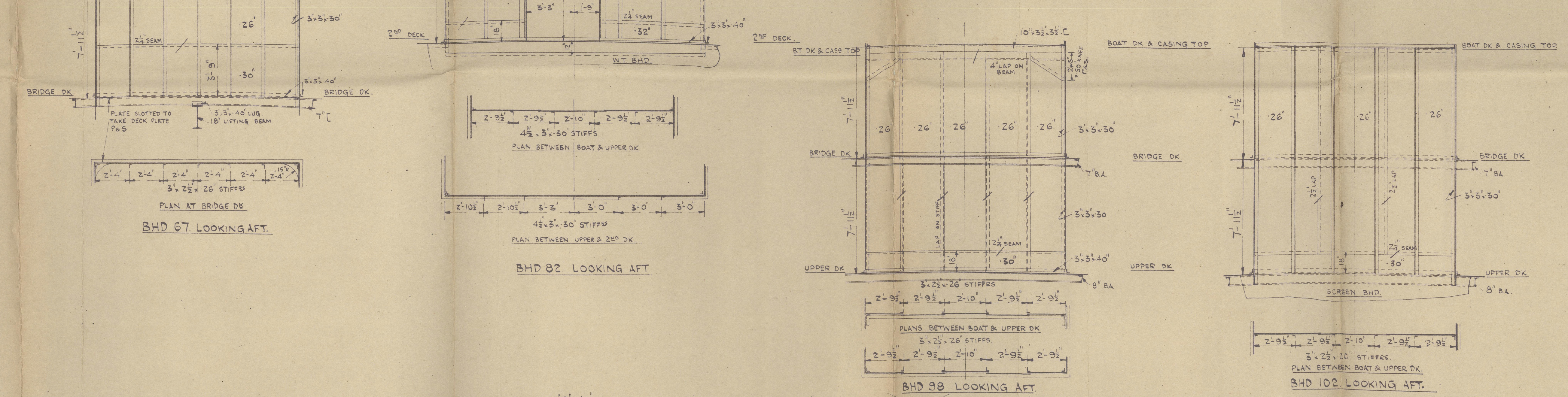


BHD 65 LOOKING AFT.

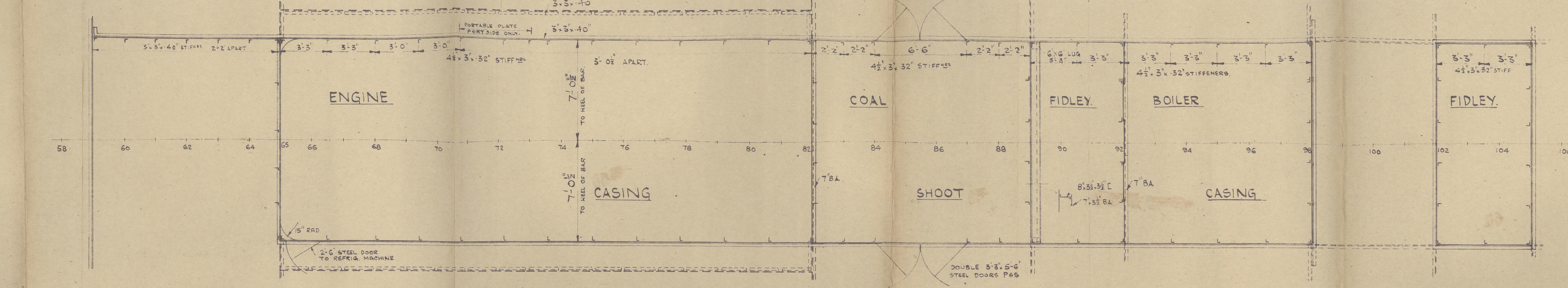
BHD 88 LOOKING AFT.

BHD 92 LOOKING AFT.

BHD 105 LOOKING AFT.



PLAN UPPER DECK.

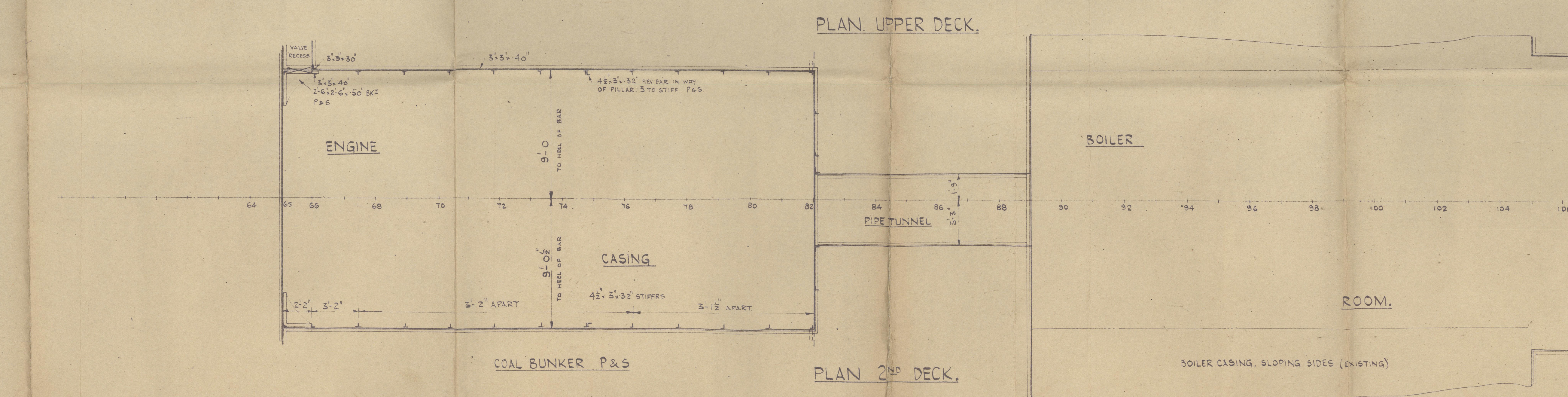


ENGINE

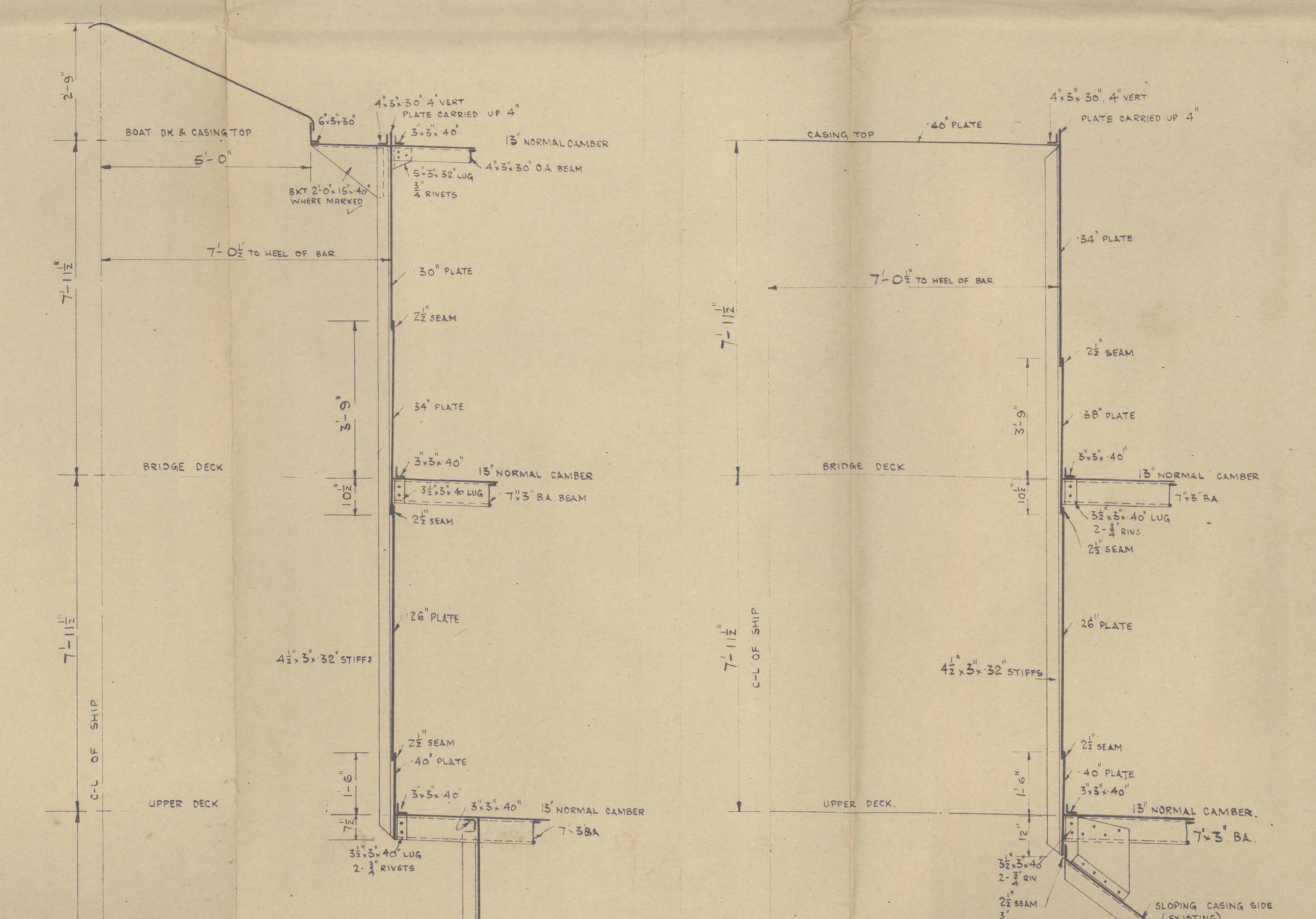
COAL

BOILER

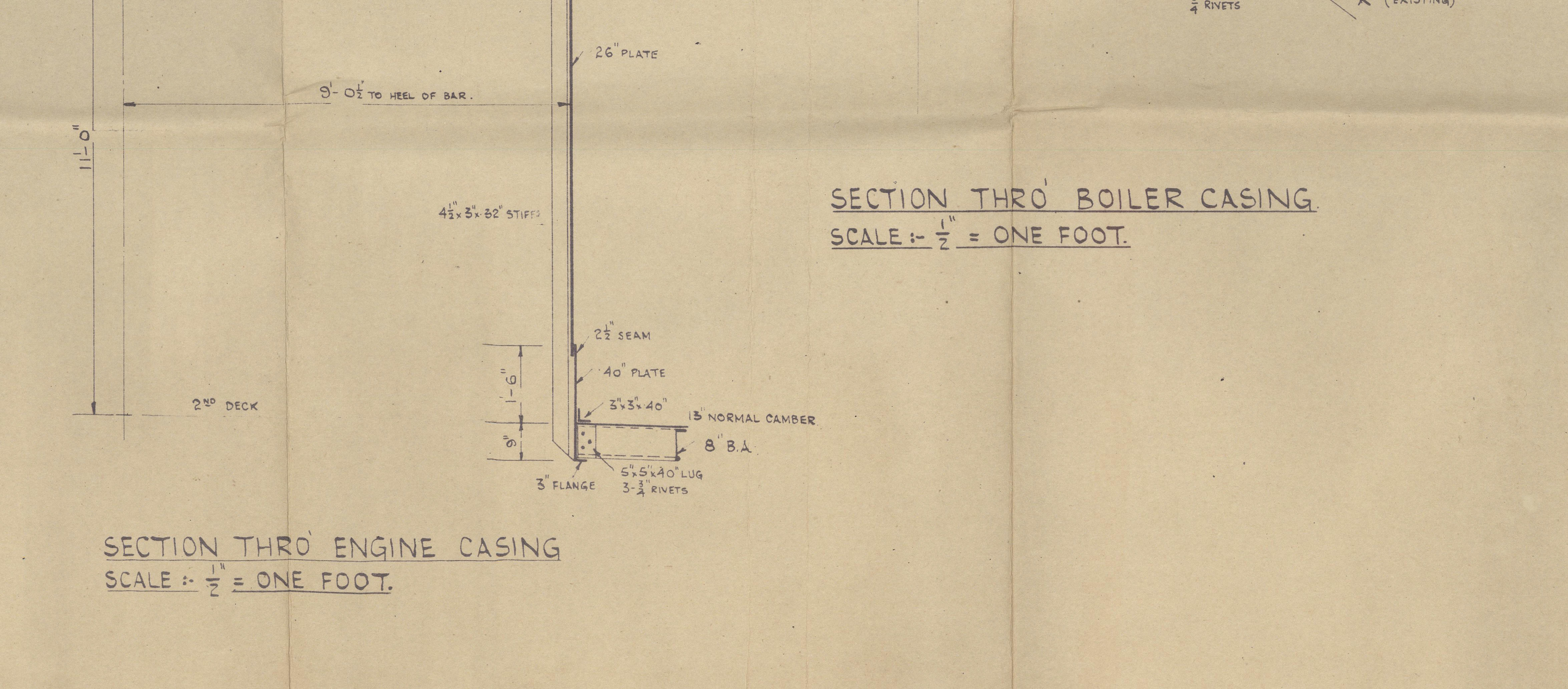
CASING



PLAN 2ND DECK.



SECTION THRO' BOILER CASING.
SCALE: 1/2" = ONE FOOT.



SECTION THRO' ENGINE CASING.
SCALE: 1/2" = ONE FOOT.

"INANDA".
ENGINE AND BOILER CASINGS.
SCALE: 1/4" = ONE FOOT.

AS APPROVED BY
LLOYDS, 22 AUG 1941

21945
W.E.G.

EMPIRE EXPLORER
EX INANDA

E. + B. CASING.

Lon 110267.

W32-0032



© 2020

Lloyd's Register
Foundation