

CARGO CAPACITIES C.F.T.											
COMPT.	UNDER SIDE OF BEAMS					TOP OF BEAMS					
	HOLDS	L.T.O.	M.T.O.	TRUNKED HATCHES	TOTALS	HOLDS	L.T.O.	M.T.O.	TRUNKED HATCHES	TOTALS	
No. 1	31310	-	-	4220	35530	32660	-	-	4240	36900	
" 2	60760	26050	-	3260	90070	63110	28060	-	3290	94450	
" 3	34610	30050	-	4100	68760	37030	32650	-	4120	73700	
" 4	18950	24630	18780	-	62360	20650	26470	20110	-	67230	
TOTALS	145630	80730	18780	11580	256720	153450	87080	20110	11650	272290	
INSULATED CARGO					6390	INSULATED CARGO					6390
STORES					39770	STORES					43210
INSULATED STORES					9070	INSULATED STORES					9070
GRAND TOTAL					311950	GRAND TOTAL					330950

ACCRA +
APAPA

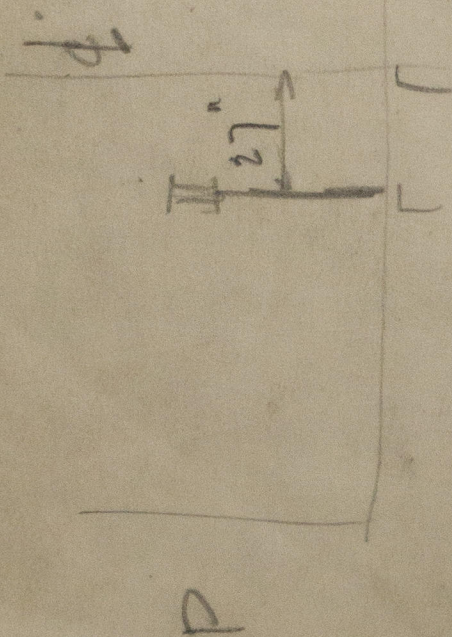
Gen Arrangement

Refrig House
in Green Stk

S.S. "ACCRA"

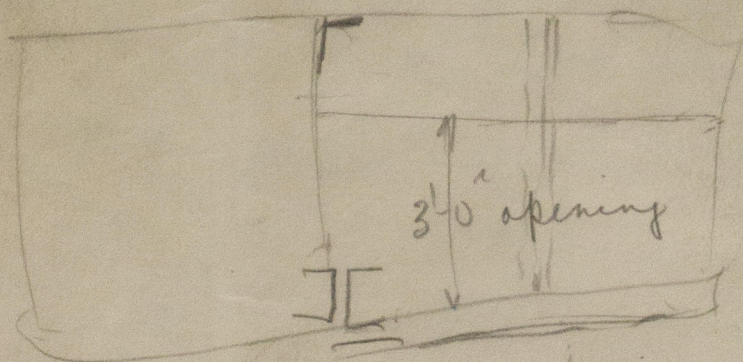
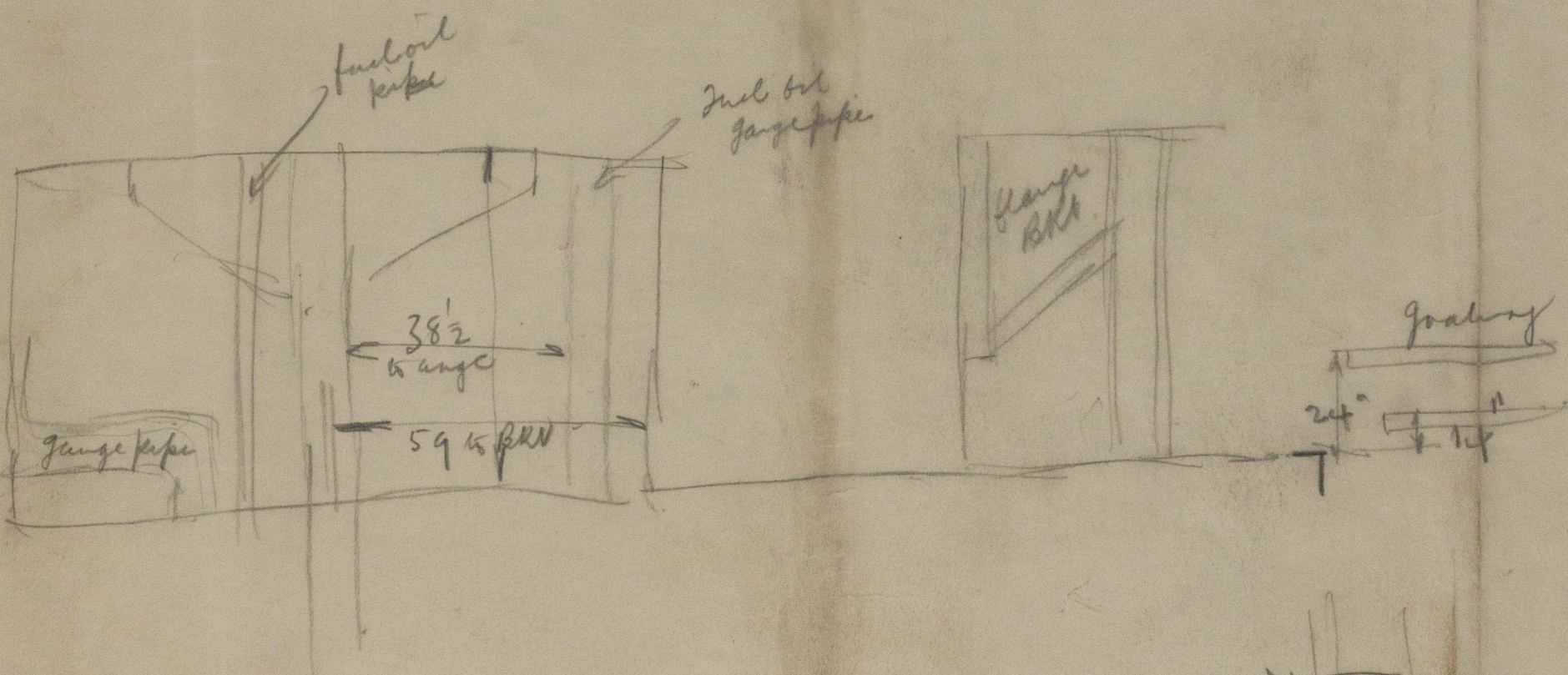
LIVERPOOL

Report No. 105391.

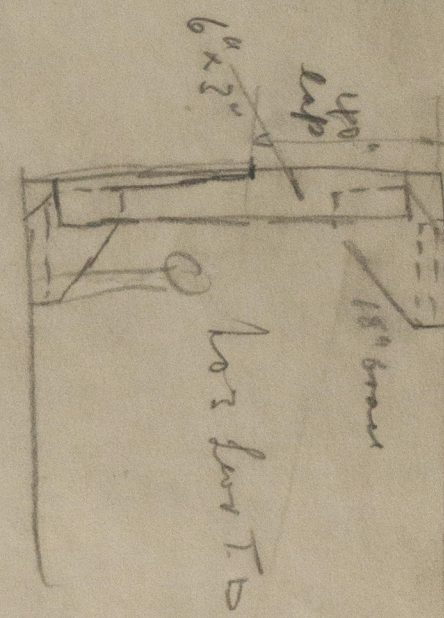


W324-0019

PA.A.
AN
E BODY SIN
22.0 MEAN
OTHER MEAN
L CENTRE
AT 35 CFT BE
PER TON C
ER SPECIFIC
QUIRE ADJUS
E OF BEAMS



27" up from
Deck
3" pipe 2 from Port Tanks



W324-0019



© 2020

Lloyd's Register
Foundation