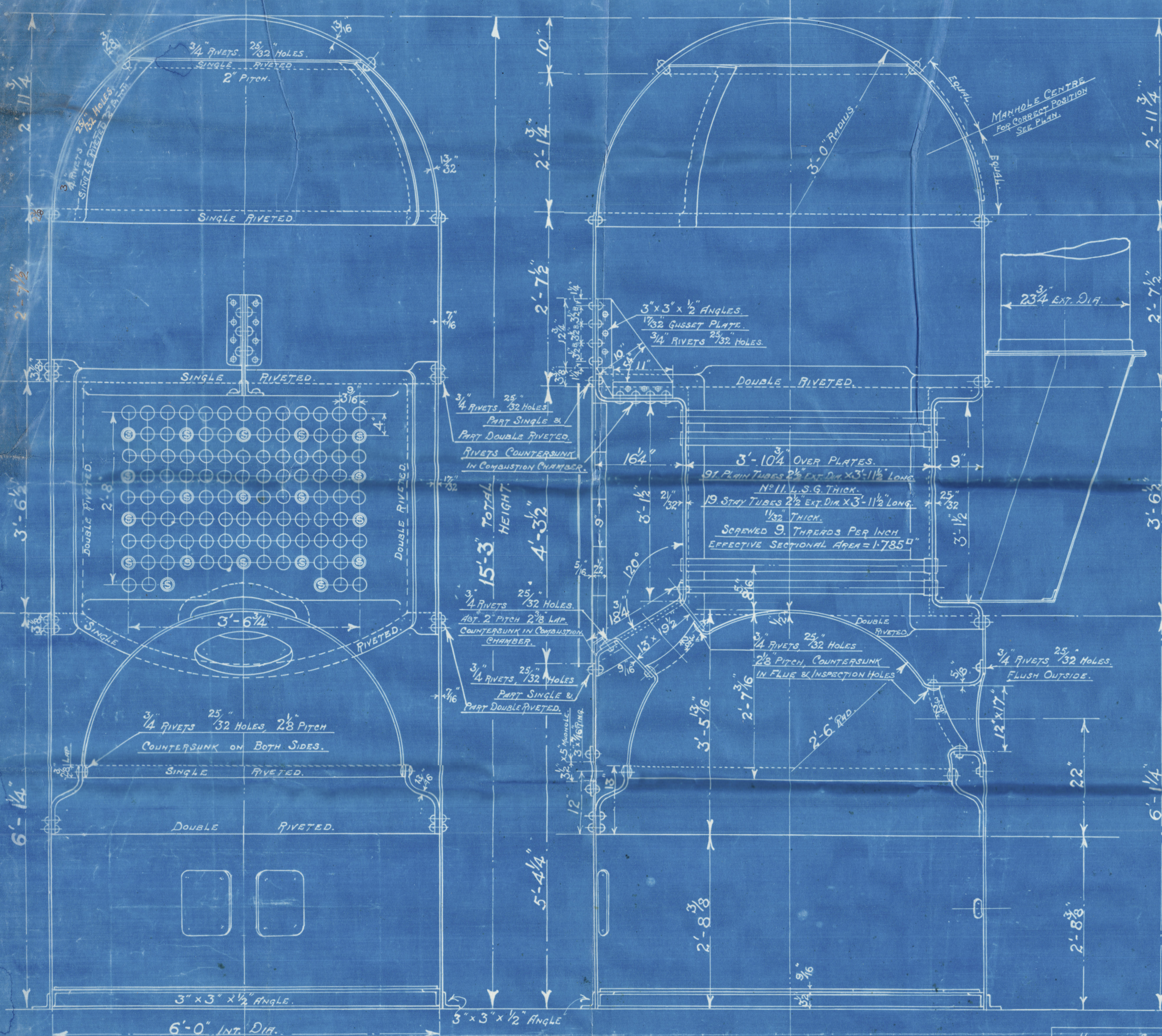


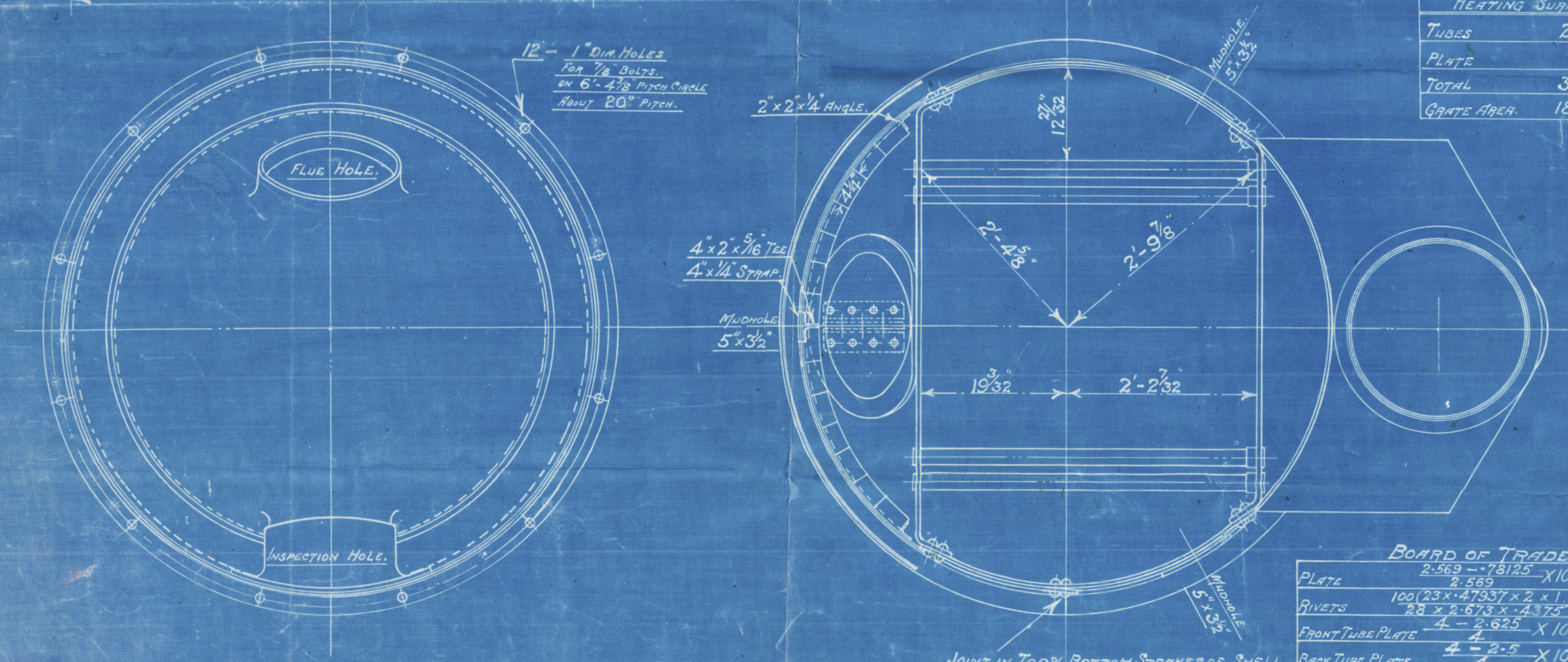
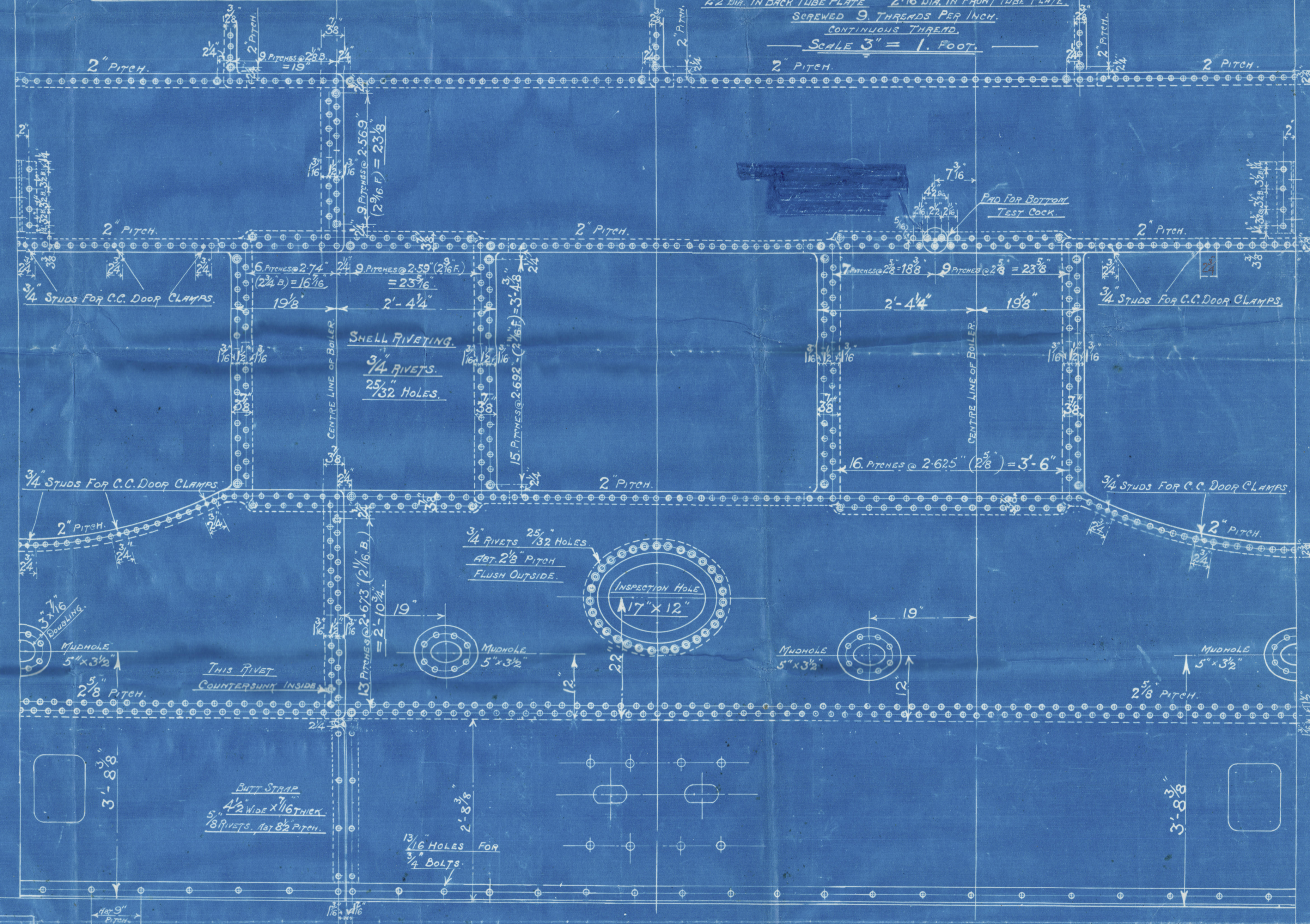
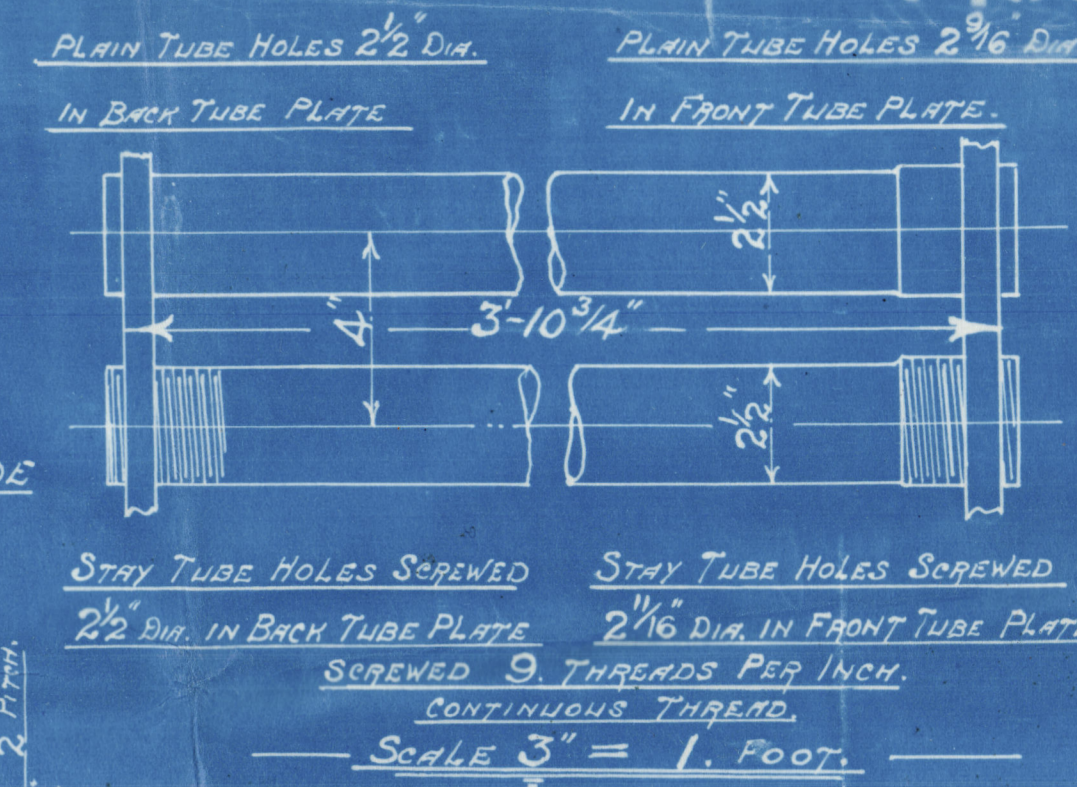
# COCHRAN PATENT VERTICAL MULTITUBULAR BOILER.

12213

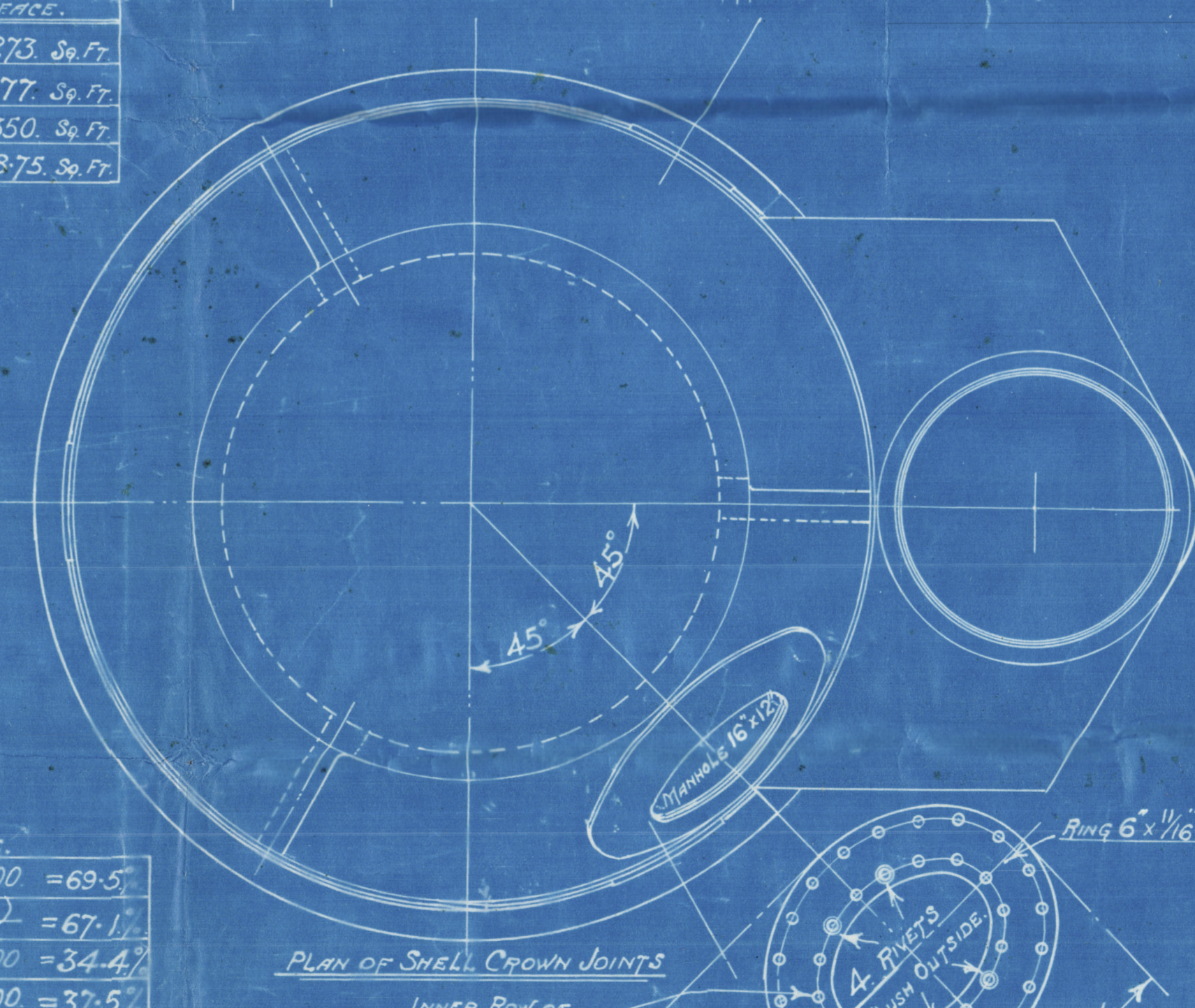
## HORIZONTAL FLUE TUBES.



NOTE: STEEL PLATES & RIVETS. ALL HOLES DRILLED IN PLACE  
MAN & MUDHOLE DOORS MADE OF TESTED PLATE  
FITTED WITH STUDS SCREWED THROUGH DOORS WITH NUTS INSIDE  
MANDOOR MADE BY CHARLES McNEIL LTD GLASGOW.  
MUDDOORS MADE BY SMETHWICK STAMPING CO. SMETHWICK.



HEATING SURFACE.	
TUBES	273 Sq. Ft.
PLATE	77 Sq. Ft.
TOTAL	350 Sq. Ft.
GRATE AREA	18.75 Sq. Ft.



LLOYDS &  
SURVEY—BOARD OF TRADE.

COCHRAN & CO ANNAN L.  
ENGINEERS & BOILERMAKERS  
ANNAN, SCOTLAND.

BOARD OF TRADE.	
PLATE	2.569 - 73125 X 100 = 69.5
RIVETS	100 (23 X 4.7537 X 2 X 1) = 67.1
FRONT TUBE PLATE	4 - 2.625 X 100 = 34.4
BACK TUBE PLATE	4 - 2.5 X 100 = 37.5
SHELL	(14 - 2.1 X 28 X 6.71) = 108.1
FRONT TUBE PLATE	(25 - 2.1 X 28 X 34.4) = 104.7
BACK TUBE PLATE	(21 - 2.1 X 28 X 37.5) = 111.5
FURNACE	275 (6 - 1) = 137.5
OBEE RING	140 (26 - 1) = 101.2

For approval  
JOB N<sup>o</sup> 616 -  
PATENT BOILER N<sup>o</sup> 9691 &  
6'-0" x 15'-3" x 350 lbs. W.P.  
SCALE 1 INCH TO 1 FOOT.  
SIEMENS MARTIN MILD STEEL PLATES  
TENSILE TESTS.  
PLATES NOT EXPOSED TO FLAME OR FLANGED..... 28 TO 32 TONS.  
PLATES EXPOSED TO FLAME OR FLANGED..... 26 TO 30 TONS.  
NR.  
14462.  
DRAWING N<sup>o</sup> 12213  
Foundation

Cochran Boiler No 9691

Drawing No. 14462.

W.P. 100 lbs.

8/5 Accra

GLASGOW REPORT No. 45128

W324-0044



Howe-Pepper  
Foundation