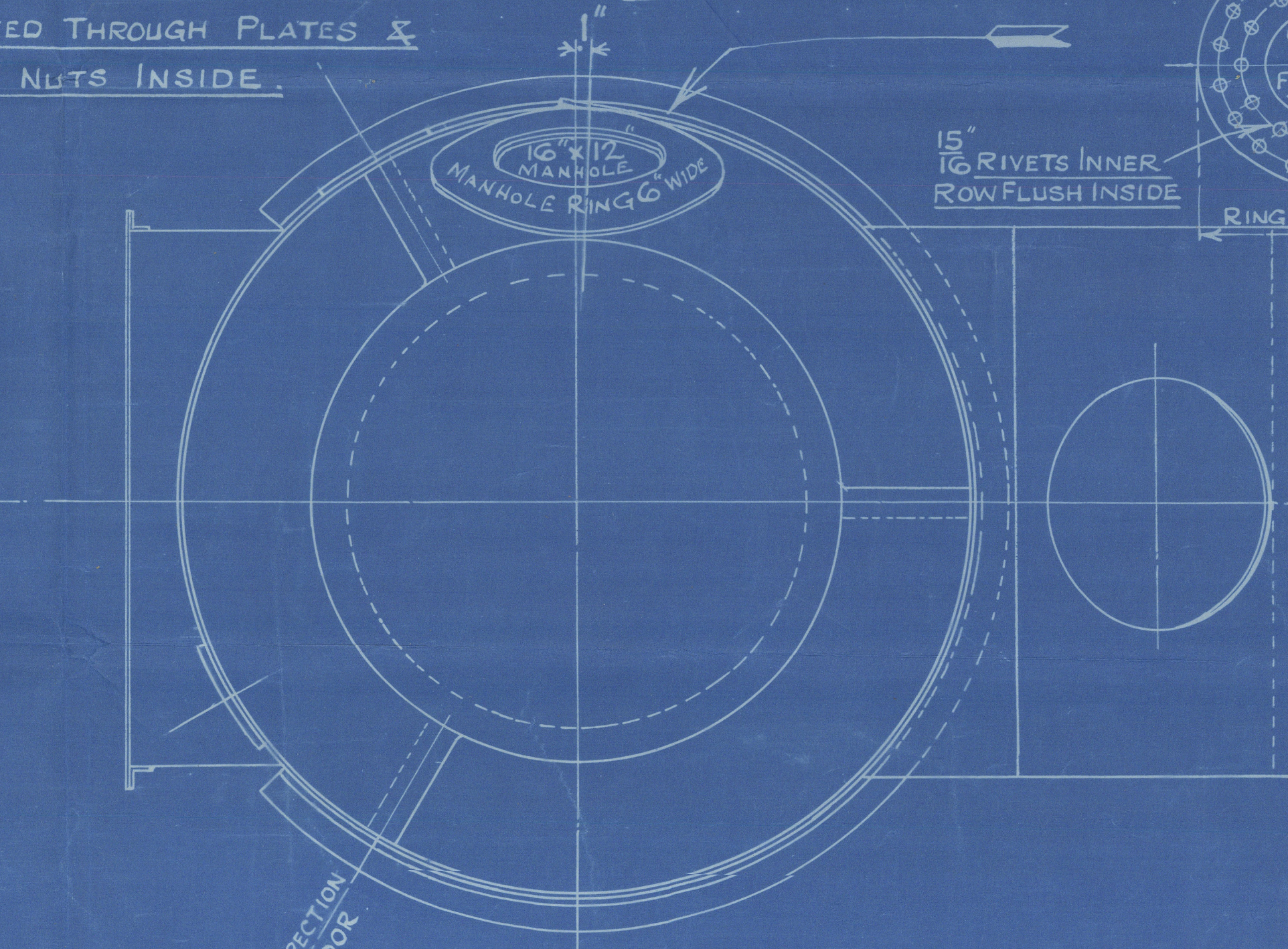
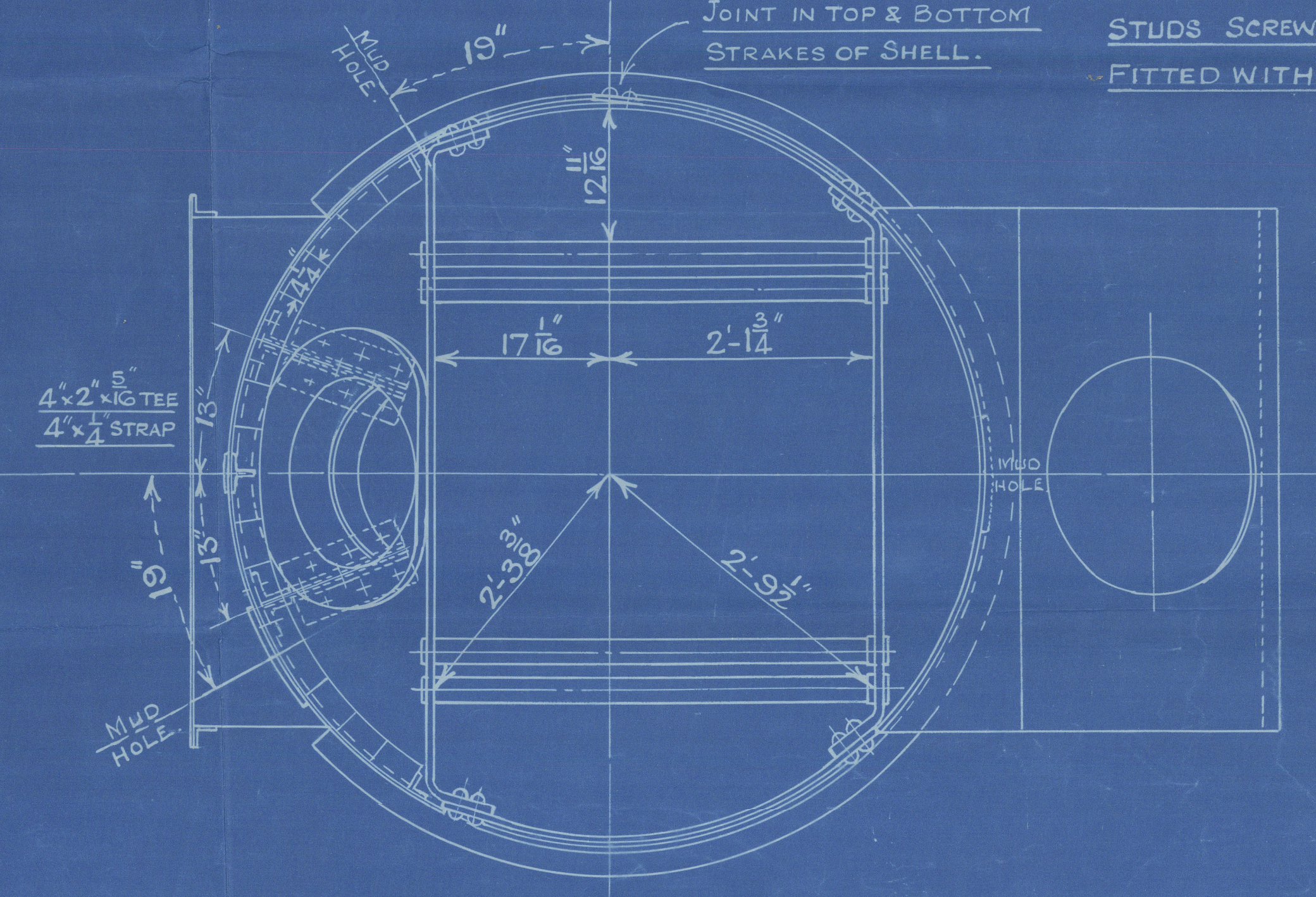
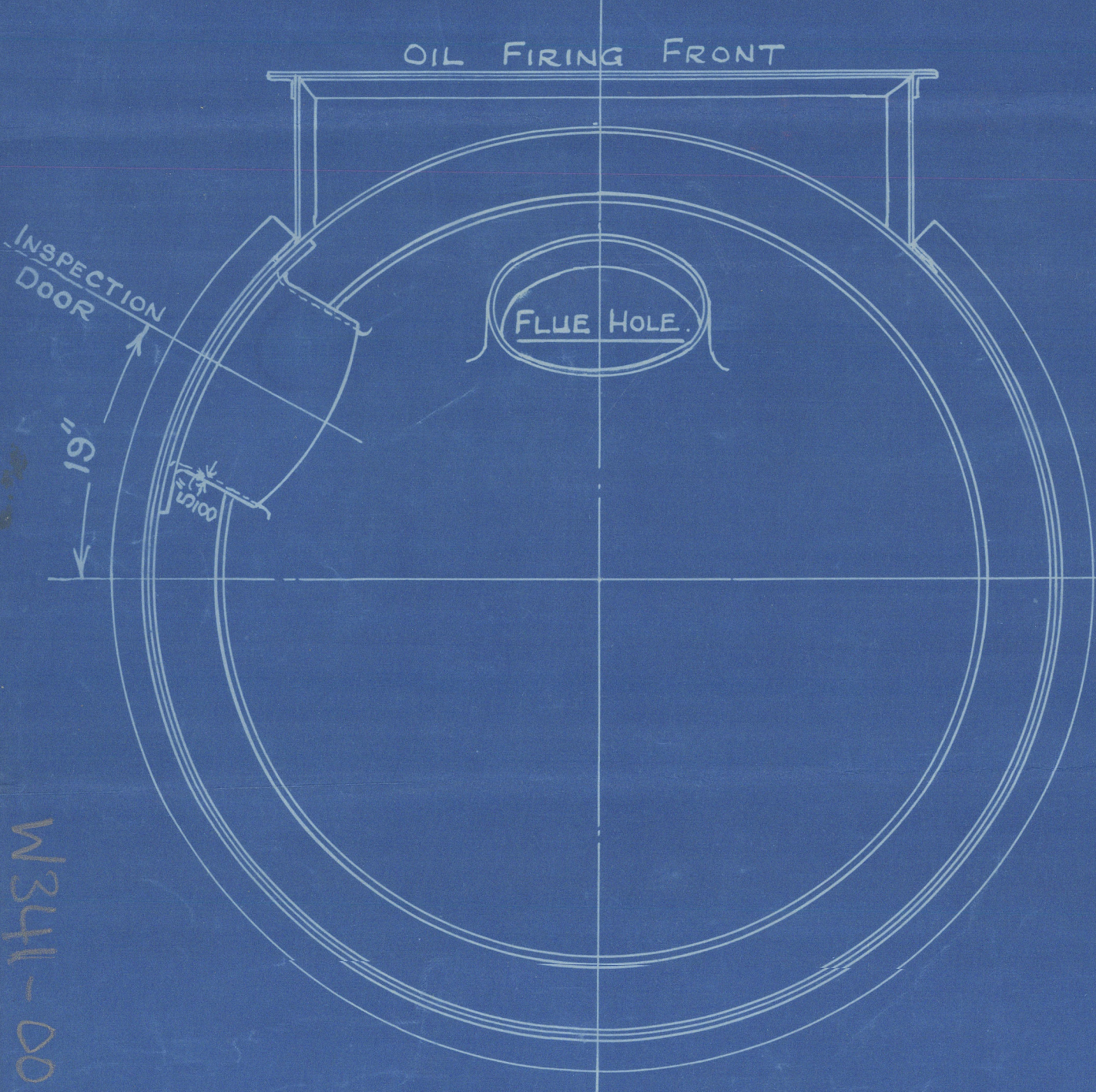
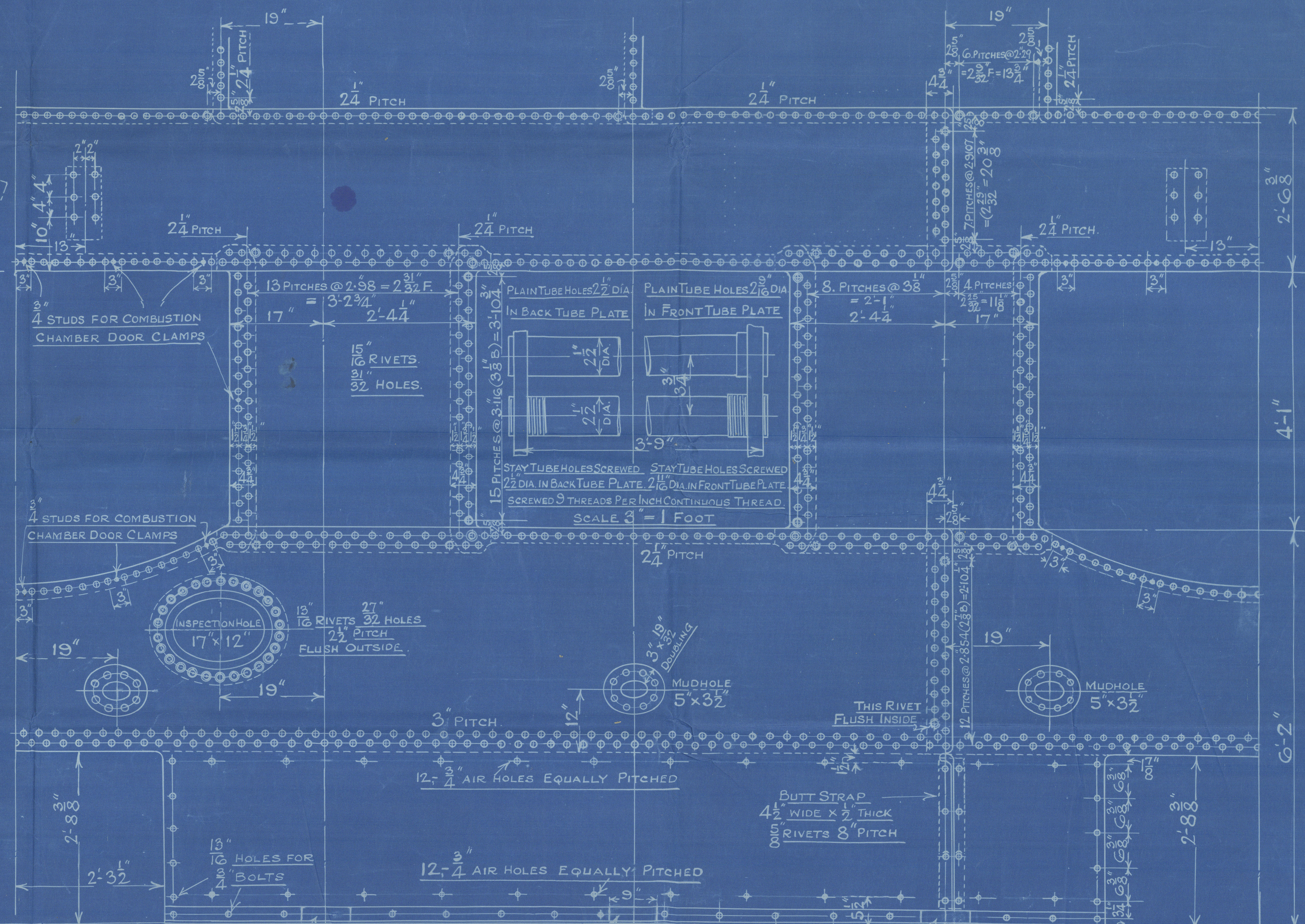
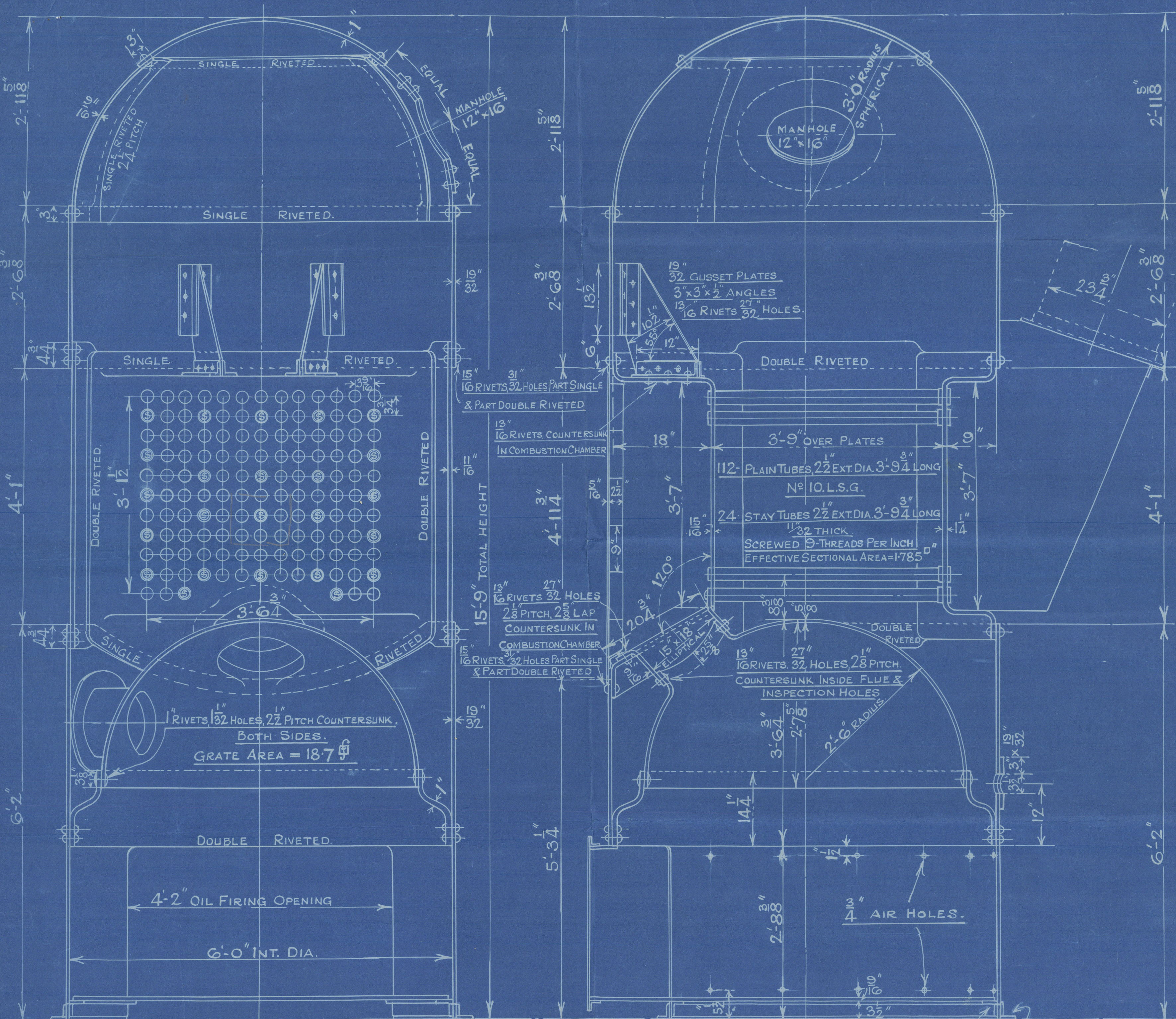


COCHRAN PATENT VERTICAL MULTITUBULAR BOILER

HORIZONTAL FLUE TUBES.



For Approval

PLATE	2.854 - .96875 x 100	= 66%
RIVETS	28 x 1.3108 x 2 x 1	= 70.1%
FRONT TUBE PLATE	3.75 - 2.625 x 100	= 30%
BACK TUBE PLATE	3.75 - 2.5 x 100	= 33.35%
SHELL	19 - 2.5 x 72 x 66	= 150.5 LBS.
FRONT TUBE PLATE	40 - 2.5 x 26 x 30	= 152.5 LBS.
BACK TUBE PLATE	30 - 2.5 x 26 x 30	= 152.9 LBS.
FURNACE	2.75 x 2 x 27.375	= 174 LBS.
GEERING	140 (32-1) 1/2	= 155.8 LBS.

PATENT BOILER NOS 10520 & 10522
 6'-0" x 15'-9" x 40" (H) x 150 LBS. W.P.

SCALE 1 INCH TO 1 FOOT

SIEMENS MARTIN MILD STEEL PLATES

TENSILE TESTS

PLATES NOT EXPOSED TO FLAME OR FLANGED 28 TO 32 TONS.

PLATES EXPOSED TO FLAME OR FLANGED & RIVETS 26 TO 30 TONS.

COCHRAN & CO ANNAN LD
 ENGINEERS & BOILERMAKERS

ANNAN SCOTLAND.

SURVEY:- LLOYDS & NORWEGIAN BOARD OF TRADE.

DRAWING N^o 15774



10520
COCHRAN & CO., ANNAN, LA.

Boiler No. 10520

Drawing No. 15774

W.P. 150 lbs "C"

GLASGOW REPORT No. 46958.

M. V. Belmorra

Eslo

M.V. "Belmorra"

NEWCASTLE ON TYNE.

1027-

Report No. 82383.



© 2021

0030
Lloyd's Register
Foundation