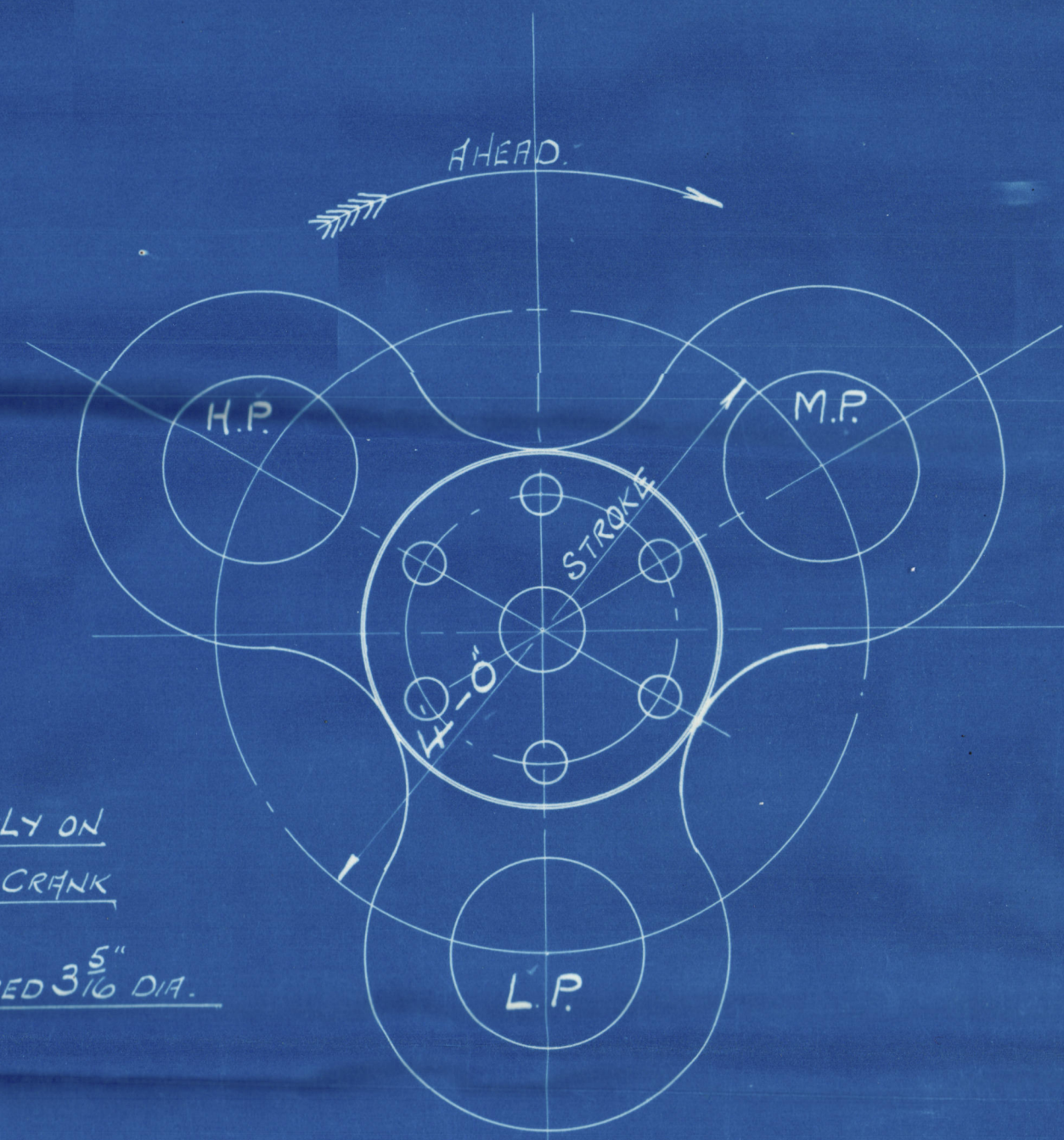
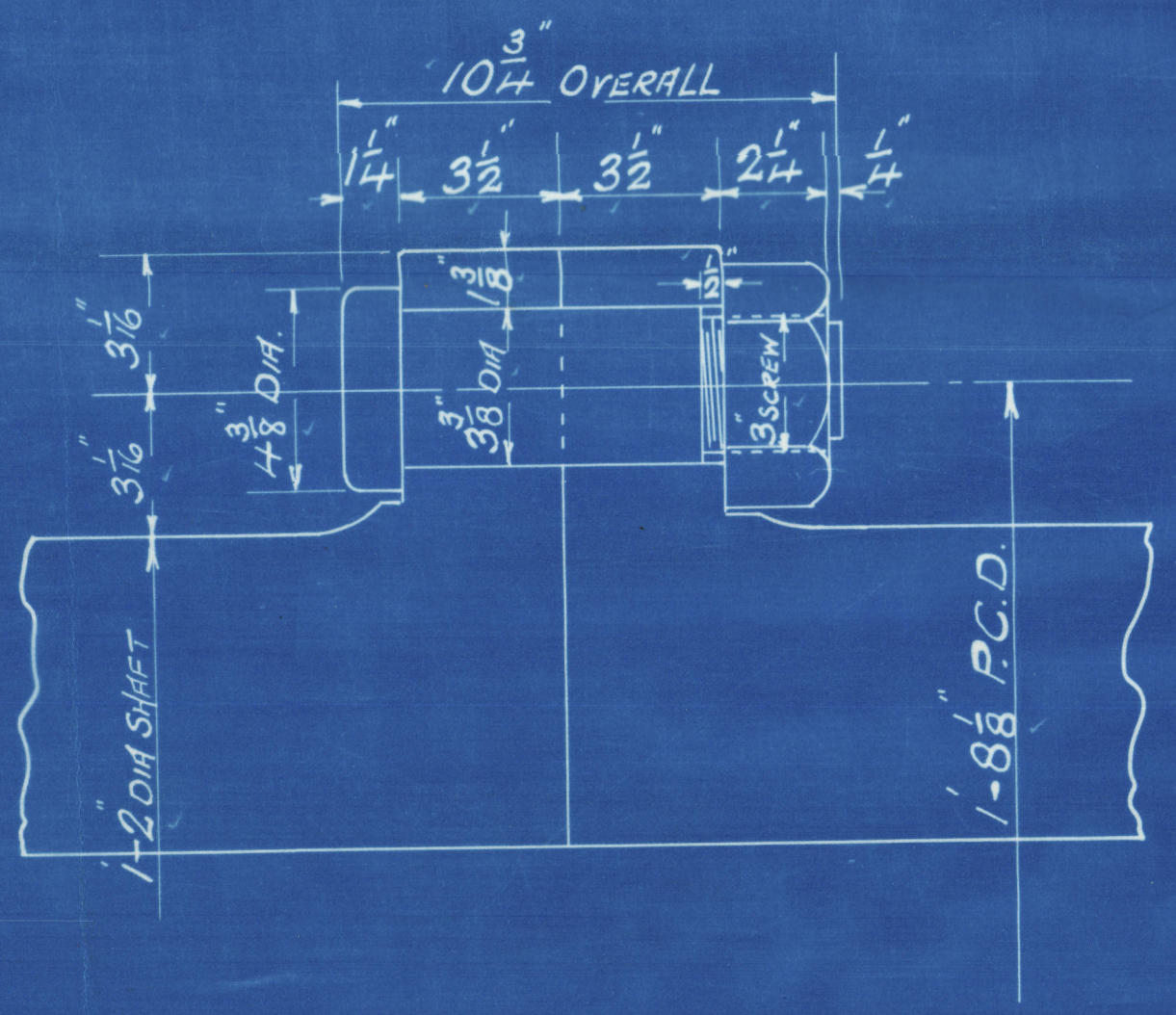


FORWARD

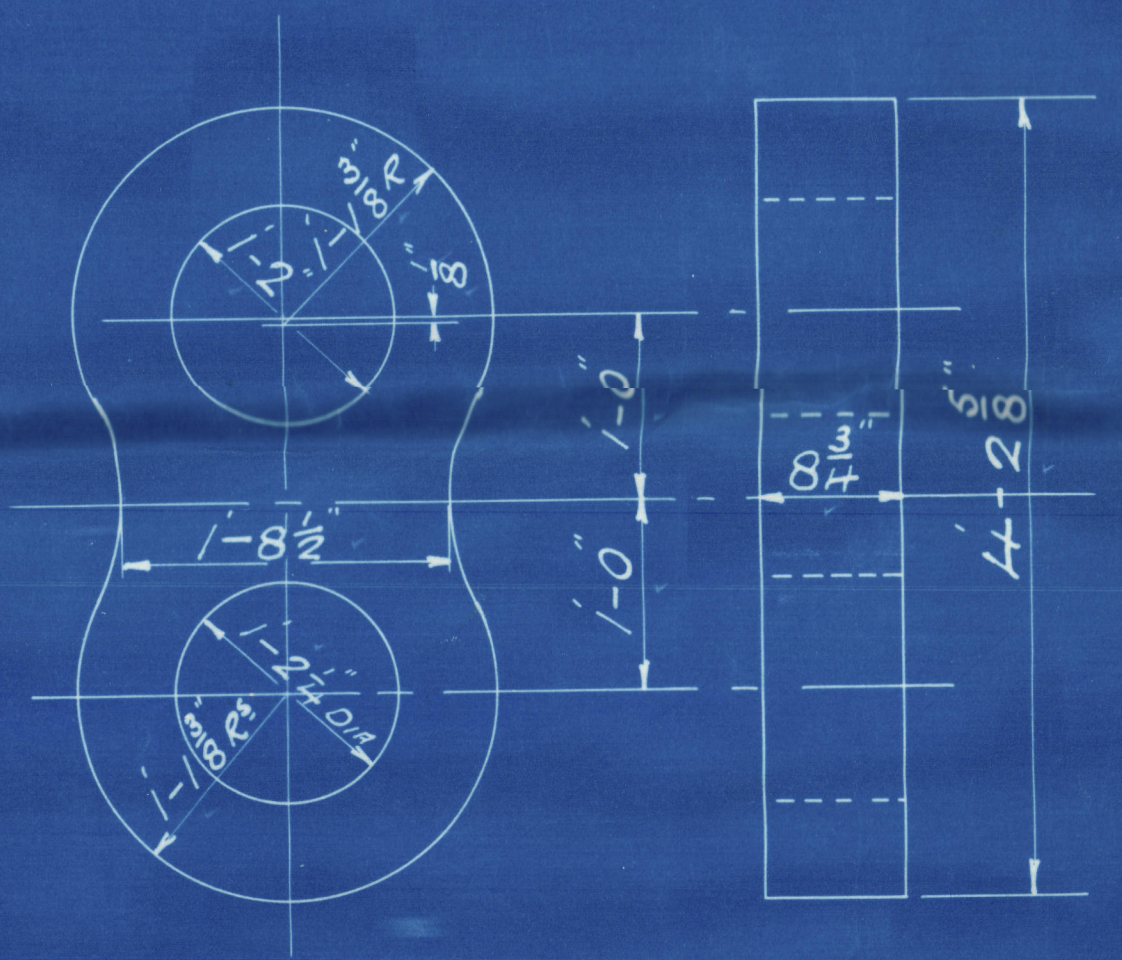
NOTE:- ALL HOLES TO BE BORED ACCURATELY ON GIVEN PITCH WITH TWO HOLES ON CRANK PIN CENTRE LINE AS SHOWN.
HOLES IN END COUPLING TO BE BORED 3 5/16 DIA.



LOOKING FORWARD



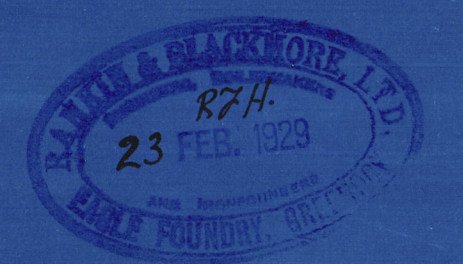
DETAIL OF COUPLING
6 - BOLTS IN COUPLING
SCALE 3" = 1 FOOT.



CRANK SHAFT, PINS, & WEBS ALL OF
FORGED INGOT STEEL
TO PASS LLOYDS SURVEY
1 - OFF WORKING.

CRANK SHAFT
ENG N° 434.

SCALE 1" = 1 FOOT



margin 25" - 42" x 40" 200th
48"
Rev. 13.4.07.
26/2/29
Supplement of 910 H.R. 5/5 marginal. Ref. 90. 18626.

W343-0021