

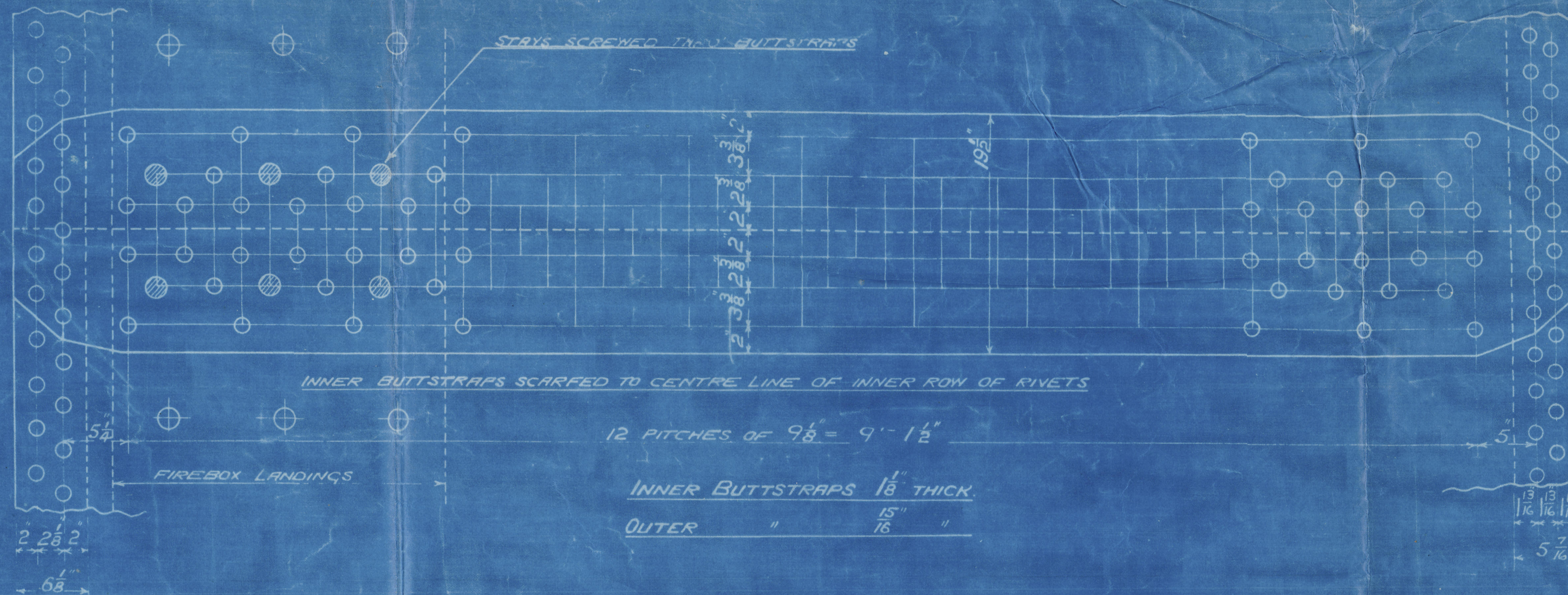
SURFACES	ONE BOILER	3 BOILERS
TUBES	2100 #	6300 #
FIREBOX TOP & SIDES	158	474
BACK	82	246
TUBE PLATE	55	165
FURNACES	161	483
TOTAL HEATING SURFACE	2556 #	7668 #
GRATE AREA (5" 6" BARS)	63.3 #	190 #
TUBE AREA	11.65	34.95
WATER	160	480
STEAM SPACE	514	1542
GRATE AREA : HEATING SURFACE	1 : 40.4	
TUBE	1 : 39.2	
AREA	5.03 : 1	
WATER	1 : 2.52	
STEAM SPACE	1 : 8.1	
% BOILER ABOVE FIREBOX	32.2	
WEIGHT OF WATER	266 TONS	79 TONS

RIVETING	LONG L	BACK END CIRC L	FRONT END CIRC L
RIVET HOLE DIA	1 5/16"	1 5/8"	1 3/4"
PITCH	9.125	3.54"	3.23"
% PLATE	85.8	63	63.23
% RIVET	88.9	51.9	45

LIMITS OF TENSILE STRENGTH & MATERIAL	
SHELL, BUTTSTRAPS & GIRDERS	28 TO 32 TONS
OTHER PLATES	26 - 30
FURNACES	26 - 30
MAIN STAYS	28 - 32
SCREWED STAYS	26 - 30
RIVET BARS	26 - 30

ALL RIVET HOLES DRILLED IN PLACE
MAIN STAYS SWELLED AT ENDS BY
HYDRAULIC PRESSURE AND ANNEALED

Back End Circ L
166 PITCHES OF 3.54"



FRONT END CIRC L
182 PITCHES OF 3.23"

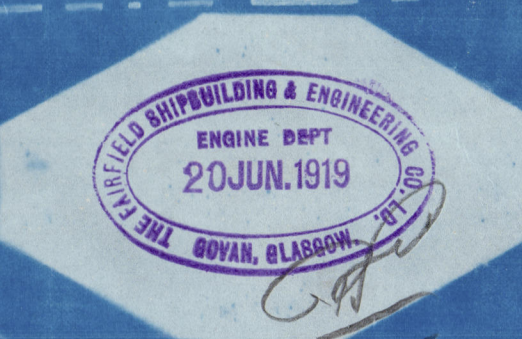
FAIRFIELD ENGINE WORKS
COVAN, GLASGOW

CHECKED 4-11-17
BY J.C.W.

DEPARTMENT PRINT PRINT PRINT
(ORDERED) (ISSUED) (RETURNED)

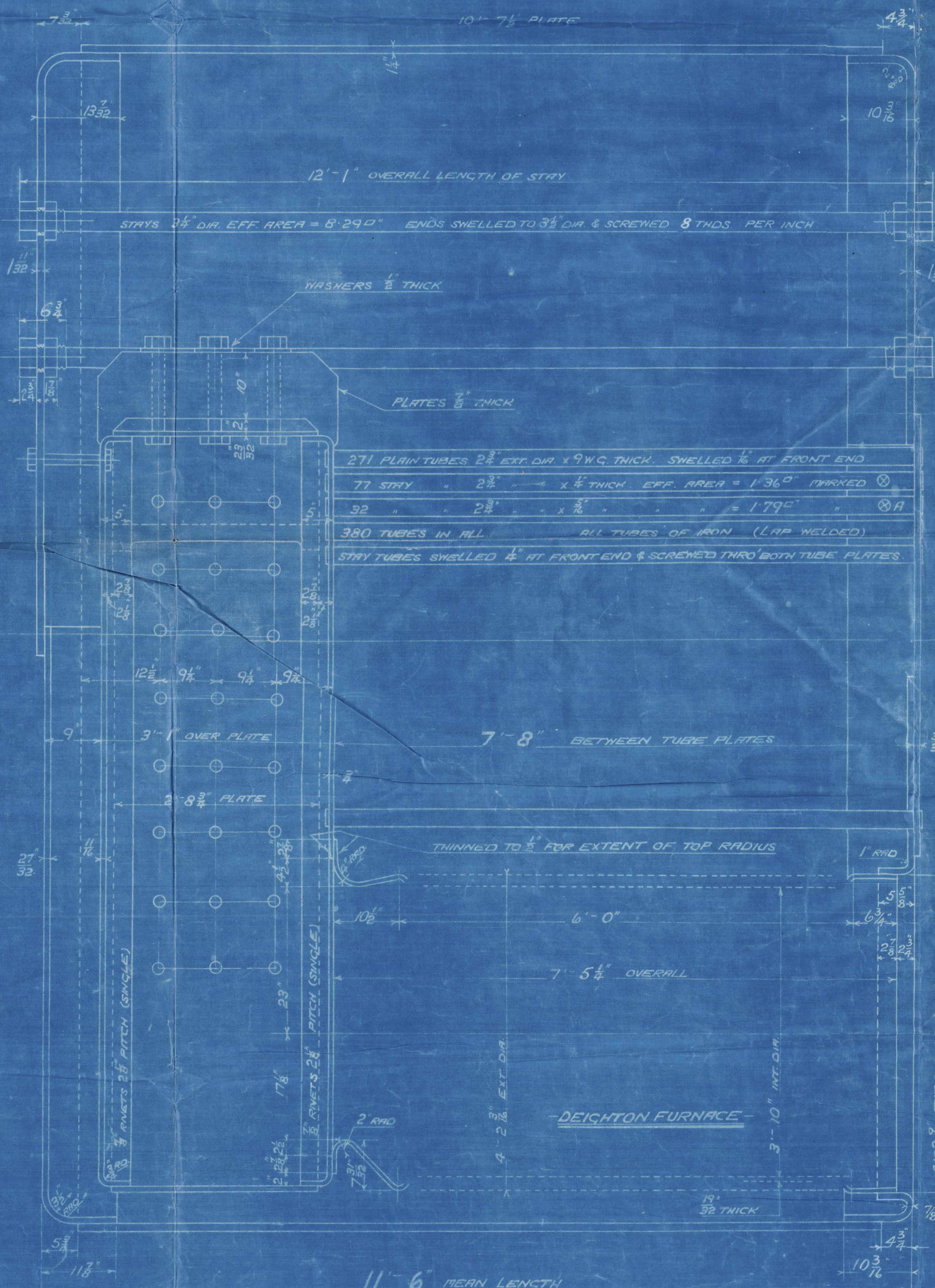
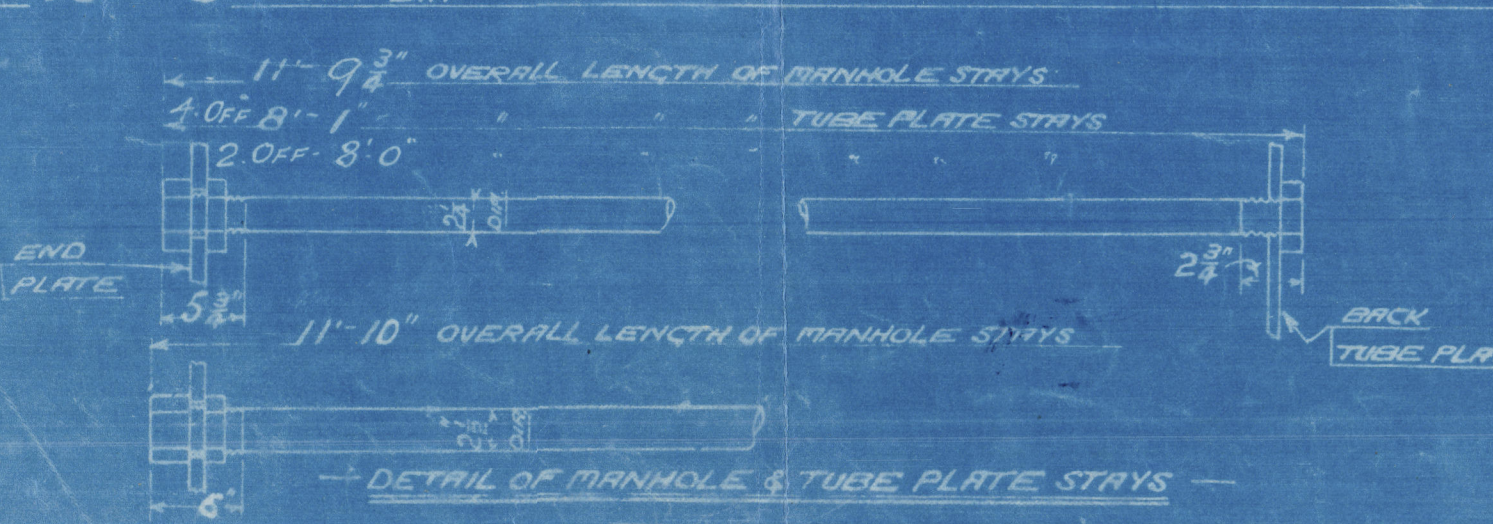
(2) Boiler Shop 4-11-17 5-4-17
Office Levels

NOTE: EVERY PRINT ISSUED MUST BE RETURNED TO DRAWING OFFICE WHEN WORK IS FINISHED



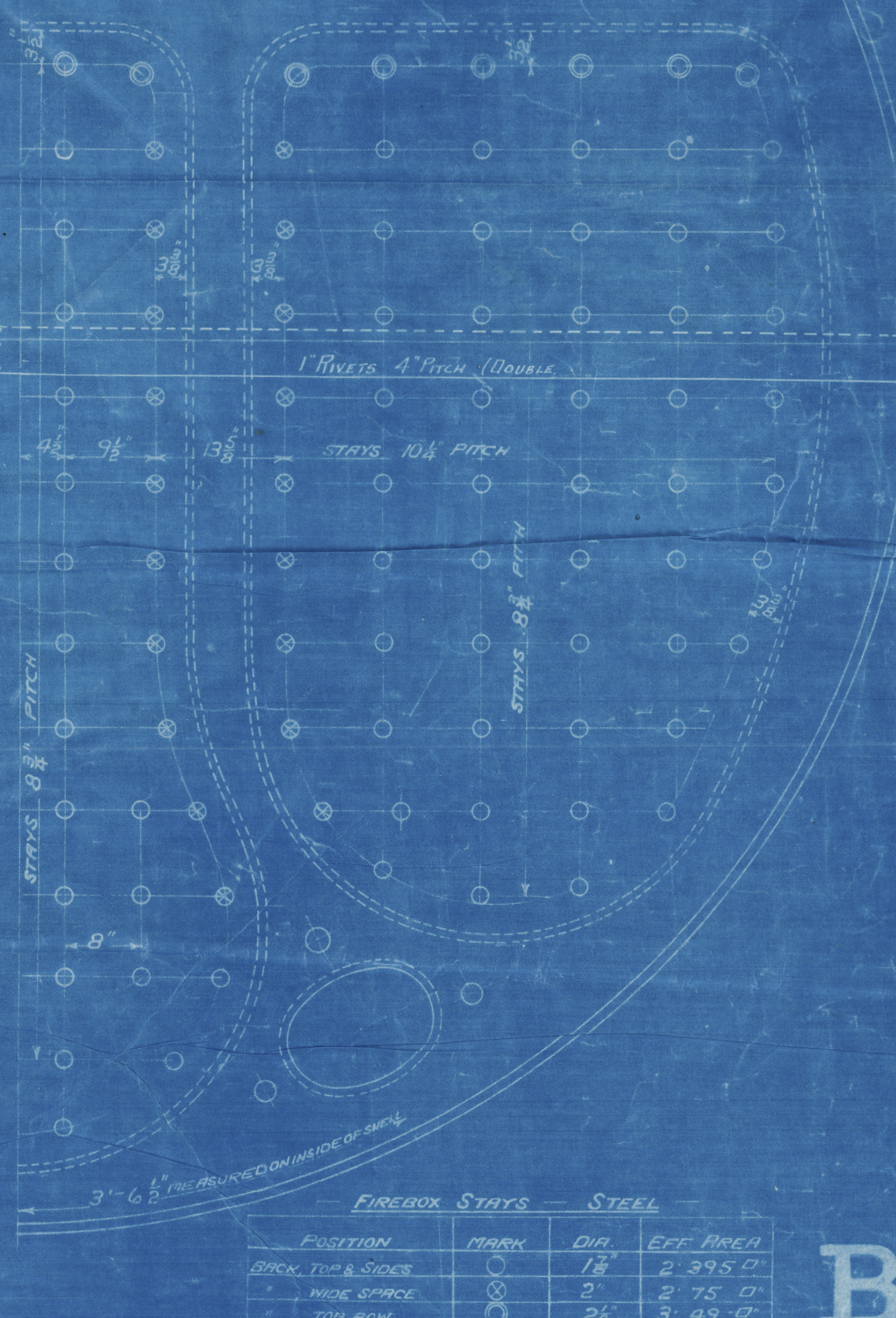
TUBE PLATE & MANHOLE
SIDE STAYS 2 1/2" DIA.
EFF. AREA = 3.97"
ENDS SWELLED TO 2 1/2" DIA.
& SCREWED 8 THDS PER INCH.
OUTSIDE NUT 1 1/2" DEEP
INSIDE 1 1/2"

MANHOLE TOP STAY 2 1/2" DIA.
EFF. AREA = 4.94" ENDS SWELLED
TO 2 1/2" DIA. & SCREWED 8 THDS PER INCH.
OUTSIDE NUT 2" DEEP
INSIDE 1 1/2"



MAIN BOILER (SECOND SERIES)
3 OFF

WORKING PRESSURE = 180 LBS PER SQ INCH
TO PASS LLOYDS SURVEY
SCALES 1/4" & 1/2" = ONE FOOT



FIREBOX STAYS - STEEL			
POSITION	MARK	DIA	EFF. AREA
BACK TOP & SIDES	13	2 3/8"	2.395"
WIDE SPACE	2	2 1/2"	2.75"
TOP ROW	2 1/2	3 1/2"	3.49"

ALL FIREBOX STAYS SCREWED THRO' BOTH PLATES & NUT FITTED AT EACH END
EXCEPT STAYS FROM WING FIRE BOX TO SHELL WHICH PROJECT 8 & ARE CHILDED.
ALL 1 1/2" NUTS 1 1/2" DEEP EXCEPT ON GIRDERS WHERE THE OUTSIDE NUTS ARE 1 1/2" DEEP.

ALL 2" & 2 1/2" NUTS 1 1/2" DEEP

Nº 542-3
W343-0045

B1

DAVID ROWAN & CO'S
REFERENCE
10.7.234966
TRADE MARK
FOUNDATION

Airfields. S.B. & Co

Books No 542-543

Copy of approved plan

RETAIN

Please return to
Glasgow Office for
guidance with 2nd
number.

GLASGOW REPORT No. 39089
S/S Benworthick



RETAIN

W343-0045



© 2020

Lloyd's Register
Foundation