

EQUIPMENT

2 BOWER ANCHORS EACH 33 CWTs (STOCKLESS) } COLL. WT.
 1 " ANCHOR 28 " } 94 CWTs
 1 STREAM ANCHOR (EX. STOCK) 8 1/2 CWTs.
 240 FATHOMS 1 1/2 STD CHAIN CABLE
 75 " 4 " STREAM WIRE } ON WIRE
 90 " 3 1/2 (6.12) F&N.R. TONLINE } REELS
 2 @ 90 " 5 HEMP HANGERS
 2 @ 90 " 5 WARPS

T.S.M.V. PACIFIC COAST

MIDSHIP SECTION

Scale 1/2" = 1 foot.

TO CLASS 100 A.I. WITH FREEBOARD CORRESPONDING TO A C.S.S. VESSEL WITH TONNAGE OPENING

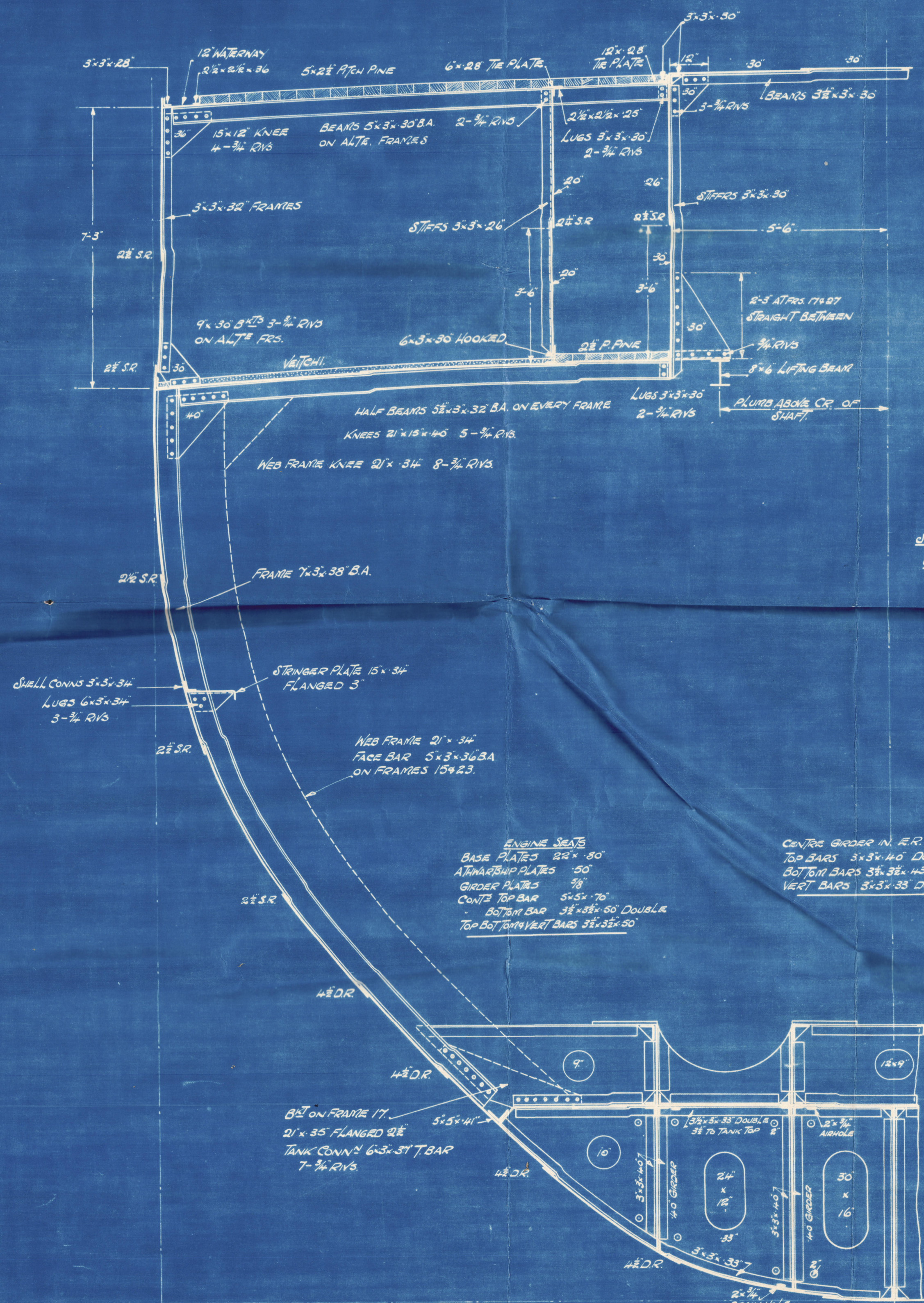
DIMENSIONS: LENGTH OVERALL 260'-0", LENGTH B.P. 250'-0", BREADTH 38'-0"
 DEPTH TO MAIN DECK 15'-3", DEPTH TO UPPER DECK 22'-9"

LOYDS NUMERALS

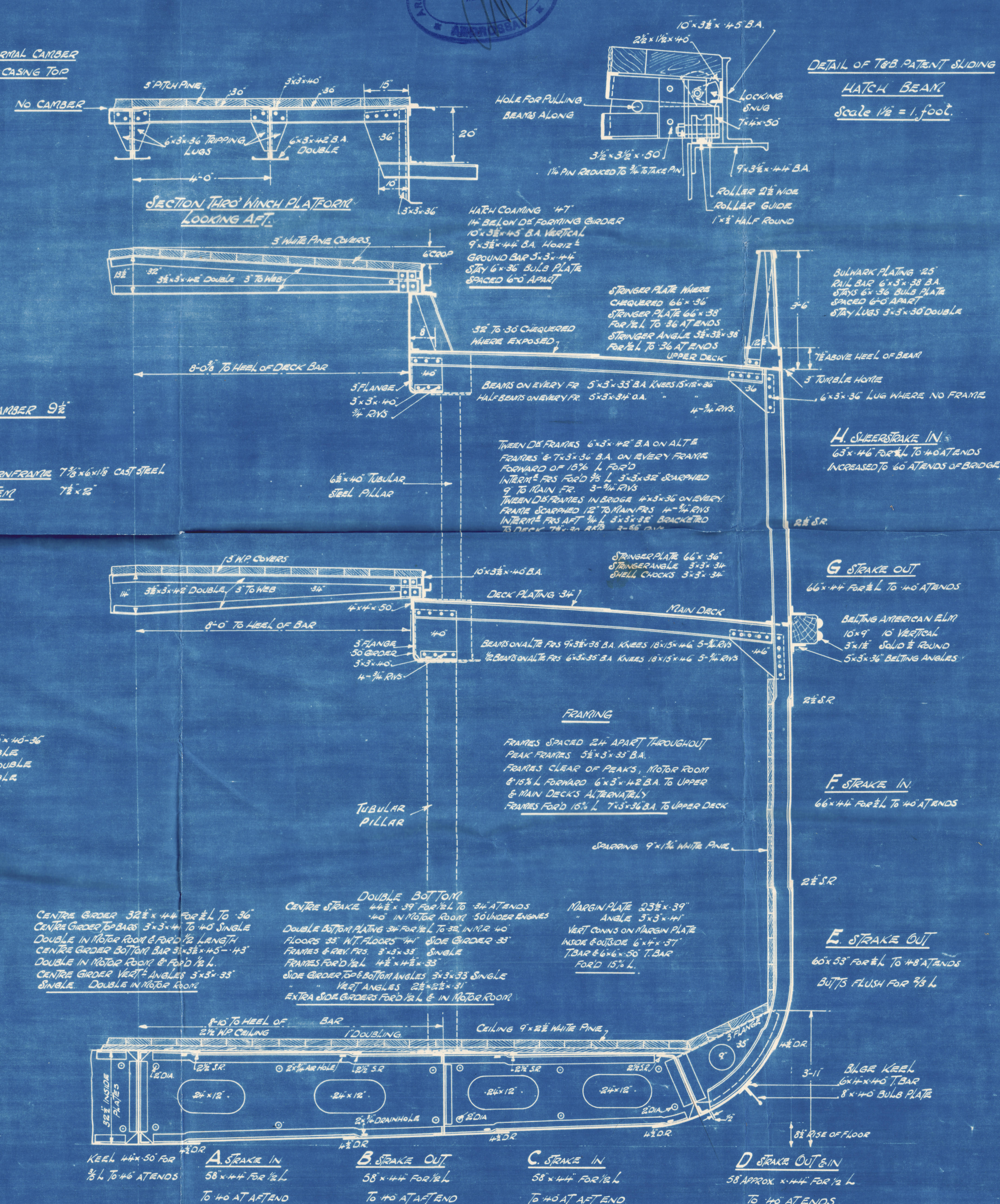
L = 250.0
 B = 38.0
 D = 22.75
 d in HOLD 12.54
 d in MOTOR ROOM 17.75
 L x D 250.0 x 22.75 = 5687
 L x (B+D) 250 x 60.75 = 15187
 D = 22.75 = 10.99

RIVETING LIST

KEEL BUTTS TR THROUGHOUT
 ALL SHELL BUTTS EXCEPT E STRAKE TR FOR 1/2 L TO DR AT ENDS
 BUTTS OF E STRAKE TR INSIDE STRIPS FOR 1/2 L TO DR STRAPS AT ENDS
 BUTTS OF A B+C STRAKES TR FORWARD OF 1/2 L
 UPPER DECK STINGER PLATE BUTTS DR THROUGHOUT
 PLATING BUTTS DR FOR 1/2 L TO SR AT ENDS
 MAIN DECK STINGER PLATE BUTTS DR THROUGHOUT
 PLATING BUTTS DR FOR 1/2 L TO SR AT ENDS
 DOUBLE BOTTOM CR STRAKE BUTTS DR THROUGHOUT
 MARGIN PLATE BUTTS DR THROUGHOUT
 DOUBLE BOTTOM PLATING BUTTS DR FOR 1/2 L TO SR AT ENDS
 OR IN OIL FUEL TANK
 BULKHEAD PLATING BUTTS SR
 SEAMS OF SHELL PLATING FROM E TO UPPER TURN OF BILGE DR
 UPPER TURN OF BILGE TO UPPER DECK SR
 DECK PLATING SR
 DOUBLE BOTTOM PLATING SR IN HOLDS
 BULKHEAD PLATING SR



SECTION THRO. MOTOR ROOM.



SECTION THRO. HOLD.

ARDROSSAN DOCKYARD, LD.

—YARD N^o 357—

Midship Section

as built

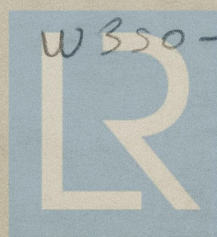
TWIN SCREW MOTOR VESSEL "PACIFIC COAST"

~~PACIFIC COAST~~

W. B. S. 27/5/35.

Pacific Coast

GLASGOW REPORT No. 55801



W 350 - 0050 2020

Lloyd's Register
Foundation

W350-0050

Lloyds

W350-0050



© 2020

Lloyd's Register
Foundation