

MIDSHIP SECTION

To CLASS 100A1 WITH FREEBOARD
CORRESPONDING TO A C.S.S. VESSEL WITH TONNAGE OPENING

DIMS. LENGTH OVERALL 260'-0" LENGTH B.P. 250'-0"
BREADTH MLD. 38'-0" DEPTH TO MAIN DECK 15'-3"
DEPTH TO UPPER DECK 22'-9"

SCALE 1/2" = 1'-0"

No 351

LOYDS NUMERALS

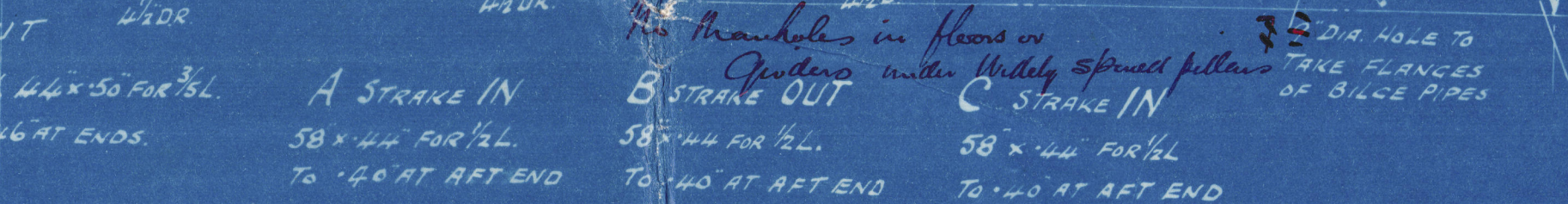
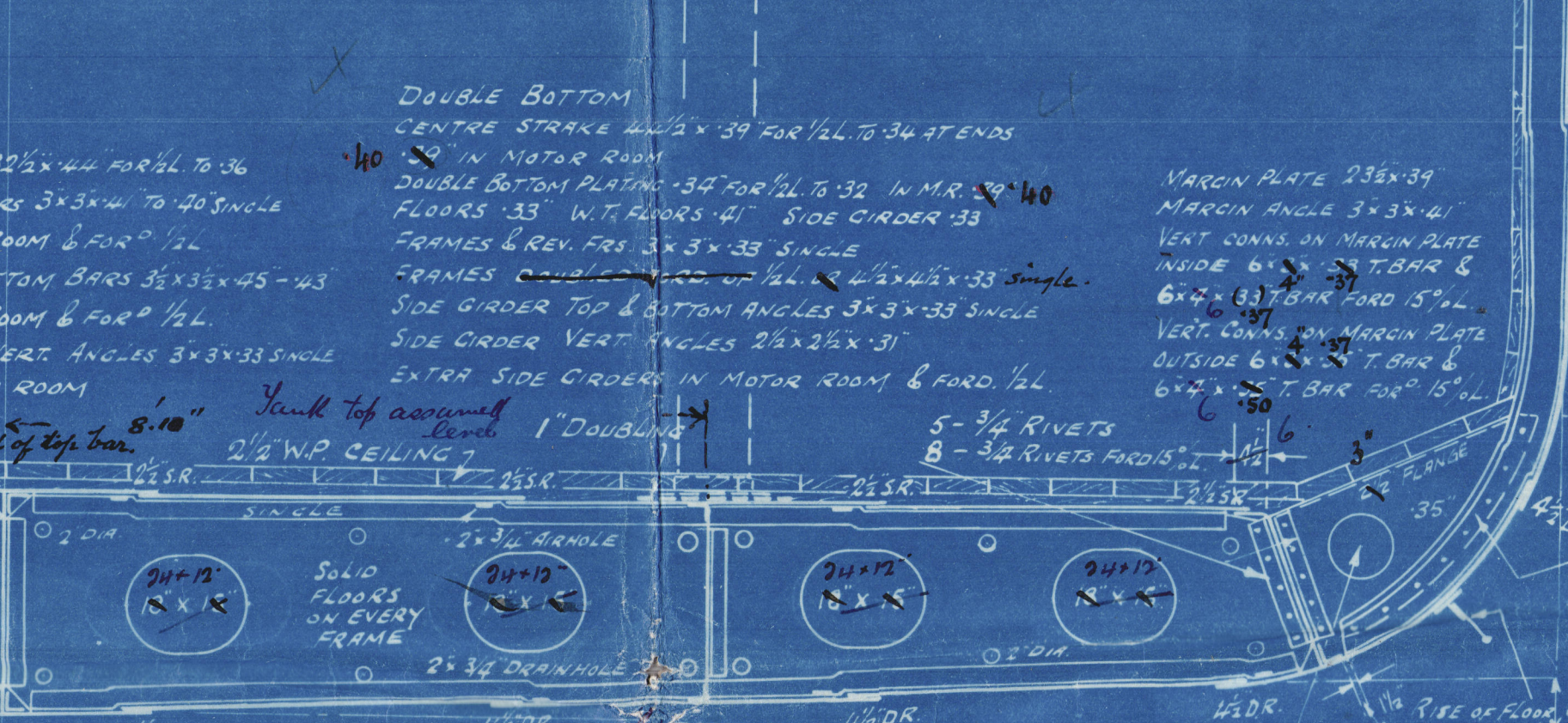
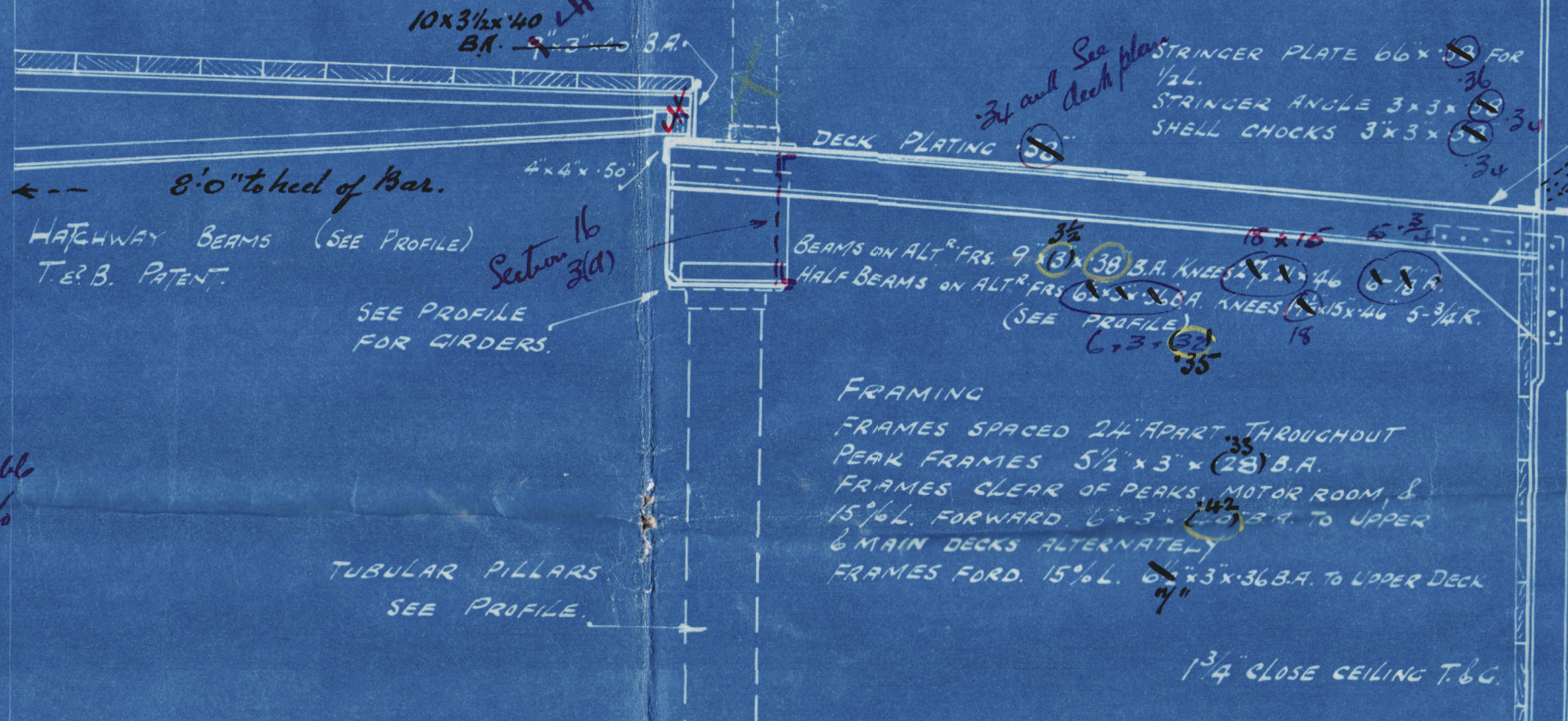
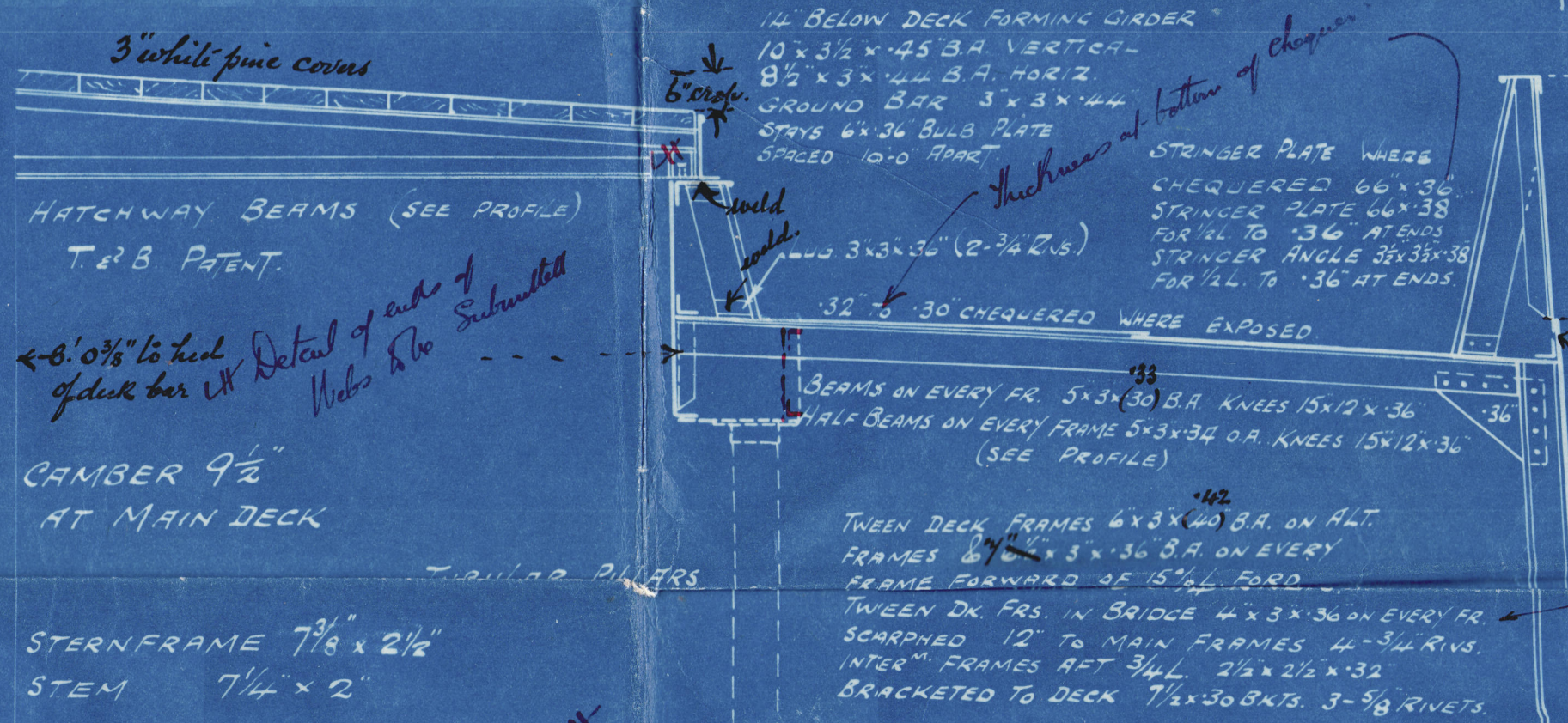
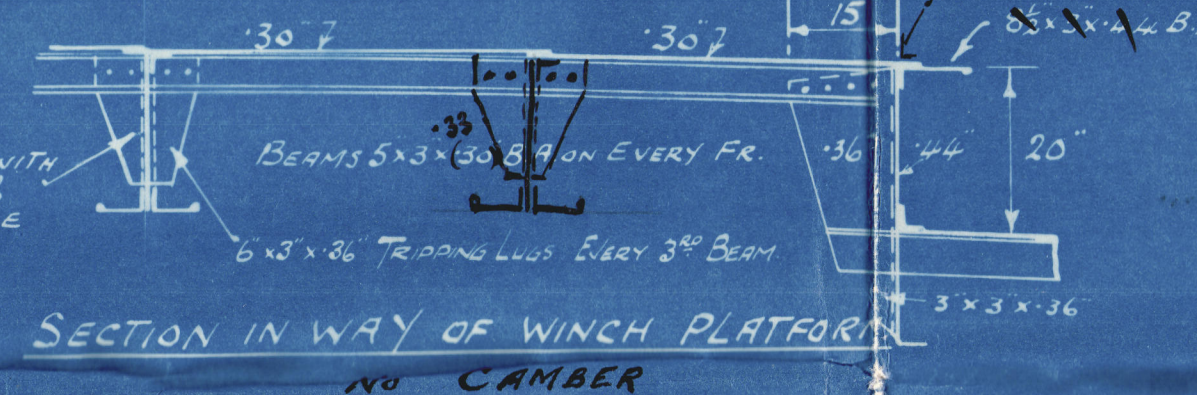
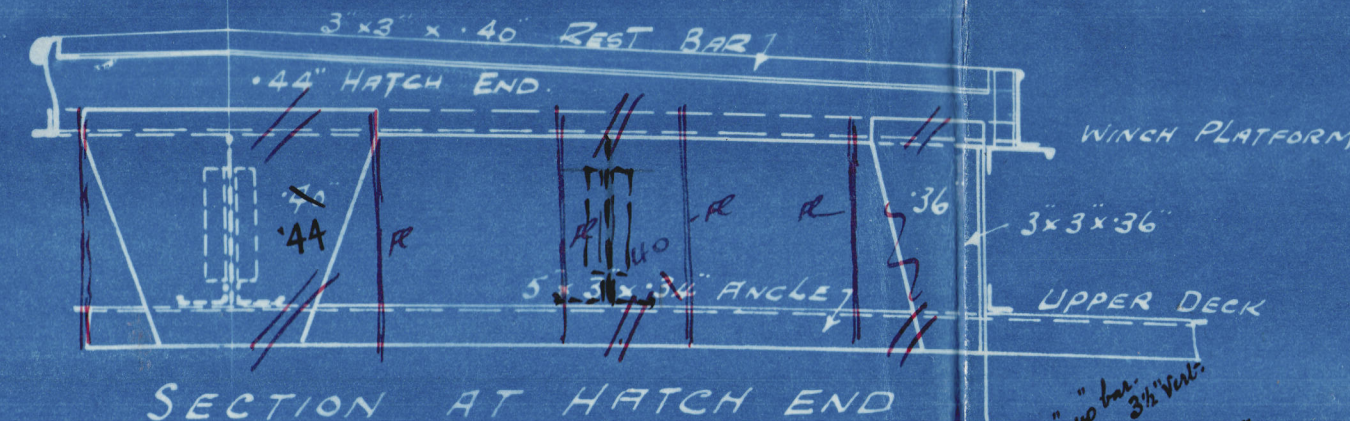
L = 250.0
B = 38.0
D = 22.75
L IN HOLD 12.54
L IN MOTOR ROOM
L x D 250.0 x 22.75 = 5687
L x (B + D) 250.0 x 60.75 = 15187
L D = 250/22.75 = 10.99

EQUIPMENT

2 BOWER ANCHORS EACH 33CWT. (STOCKLESS) COLL. W. 15'18" 5"
1 " ANCHOR 28 " (") 94CWT. 15'18" 5"
1 STREAM ANCHOR (EX STOCK) 8 1/2 CWT
240 FATHOMS 1 1/2" STUD CHAIN CABLE
75 " 1 1/2" STUD LINK STREAM CHAIN
40 " 3 1/2" (6x12) F.S.W.R. TOWLINE
2 @ 90 " 2 1/4" (6x12) F.S.W.R. OR 6 HEMP HAWSERS
2 @ 90 " 1 3/4" (6x12) F.S.W.R. OR 5 " WARPS

RIVETING LIST

KEEL BUTTS T.R. THROUGHOUT
ALL SHELL BUTTS EXCEPT E STRAKE T.R. FOR 1/2 L TO D.R. AT ENDS
BUTTS OF E STRAKE T.R. INSIDE STRAPS FOR 1/2 L TO D.R. STRAPS AT ENDS
BUTTS OF A, B, C, STRAKES T.R. FORWARD OF 1/2 L
UPPER DECK STRINGER PLATE BUTTS D.R. THROUGHOUT
PLATING BUTTS D.R. FOR 1/2 L TO S.R. AT ENDS
MAIN DECK STRINGER PLATE BUTTS D.R. THROUGHOUT
PLATING BUTTS D.R. FOR 1/2 L TO S.R. AT ENDS
DOUBLE BOTTOM CENTRE STRAKE BUTTS D.R. THROUGHOUT
MARGIN PLATE BUTTS D.R. THROUGHOUT
DOUBLE BOTTOM PLATING BUTTS D.R. FOR 1/2 L TO S.R. AT ENDS
BULKHEAD PLATING BUTTS S.R.
SEAMS OF SHELL PLATING FROM 1/2 L TO UPPER TURN OF BILGE D.R.
UPPER TURN OF BILGE TO UPPER D.K. S.R.
DECK PLATING S.R. in Keels
DOUBLE BOTTOM PLATING S.R.
BULKHEAD PLATING S.R.



NOTE: STRAKES A, B, C, 48" FROM 1/2 L TO RULE POSITION OF COLLISION BND.

SECTION THRO' MOTOR ROOM.

SECTION THRO' HOLD.

APPROVED

LOYDS REGISTER OF SHIPPING

7874



W350-0051

20 MAY 1925

Messrs. Ardrossan & Co. Ltd

(2)

Yard No 354.

Pacific Coast
Midship Section

Pacific Coast

OCEAN

COAST.

Prelim. Fld

GLASGOW REPORT No. 55171

Fld

GLASGOW REPORT No. 55763

GLASGOW REPORT No. 55801



© 2020

Lloyd's Register
Foundation

FRAMING
FRAMES SPACED 24" APART THROUGHOUT
PEAK FRAMES 5 1/2" x 3" x 28" B.H.
FRAMES CLEAR OF PEAKS WITH 2" CLEARANCE
2 1/2" S.R.
(SEE PROFILE)
35



© 2020

Lloyd's Register
Foundation

W350-0051