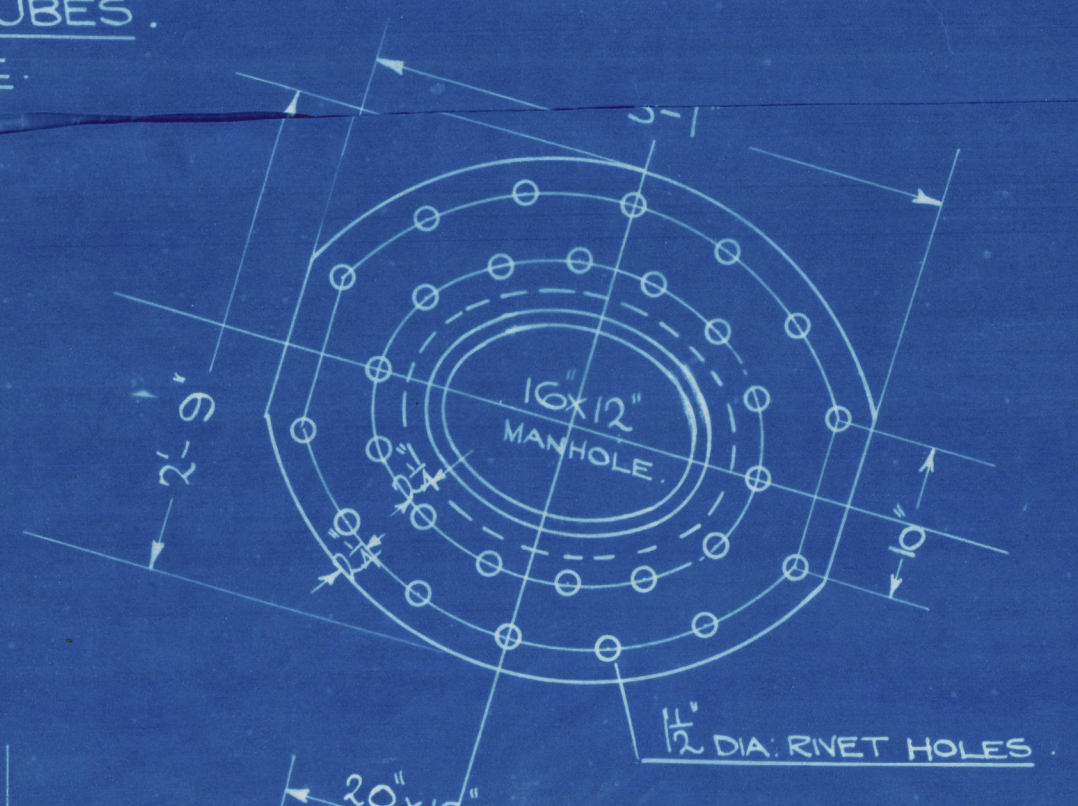


DETAIL OF STAY TUBES.  
SCALE: HALF SIZE



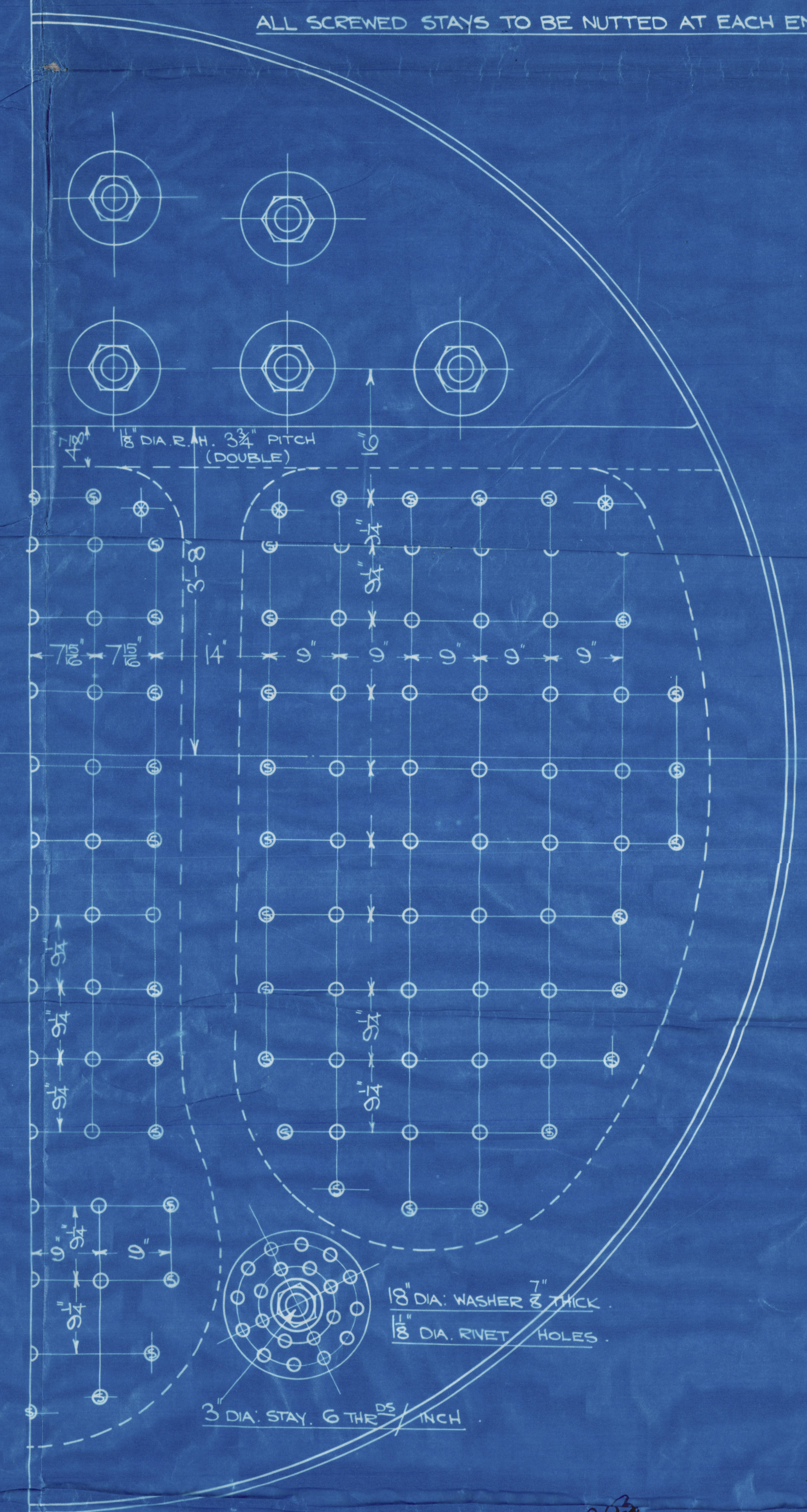
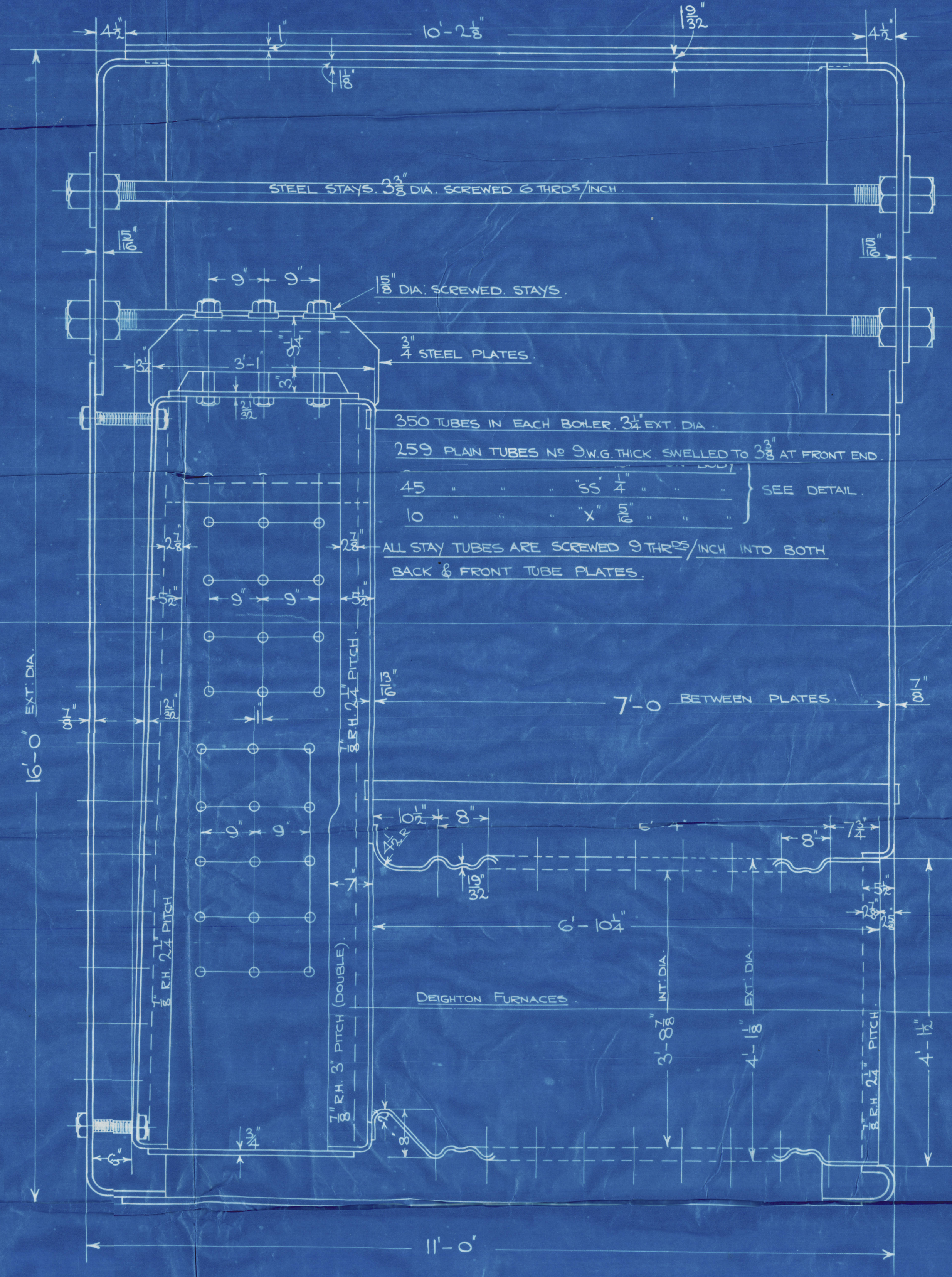
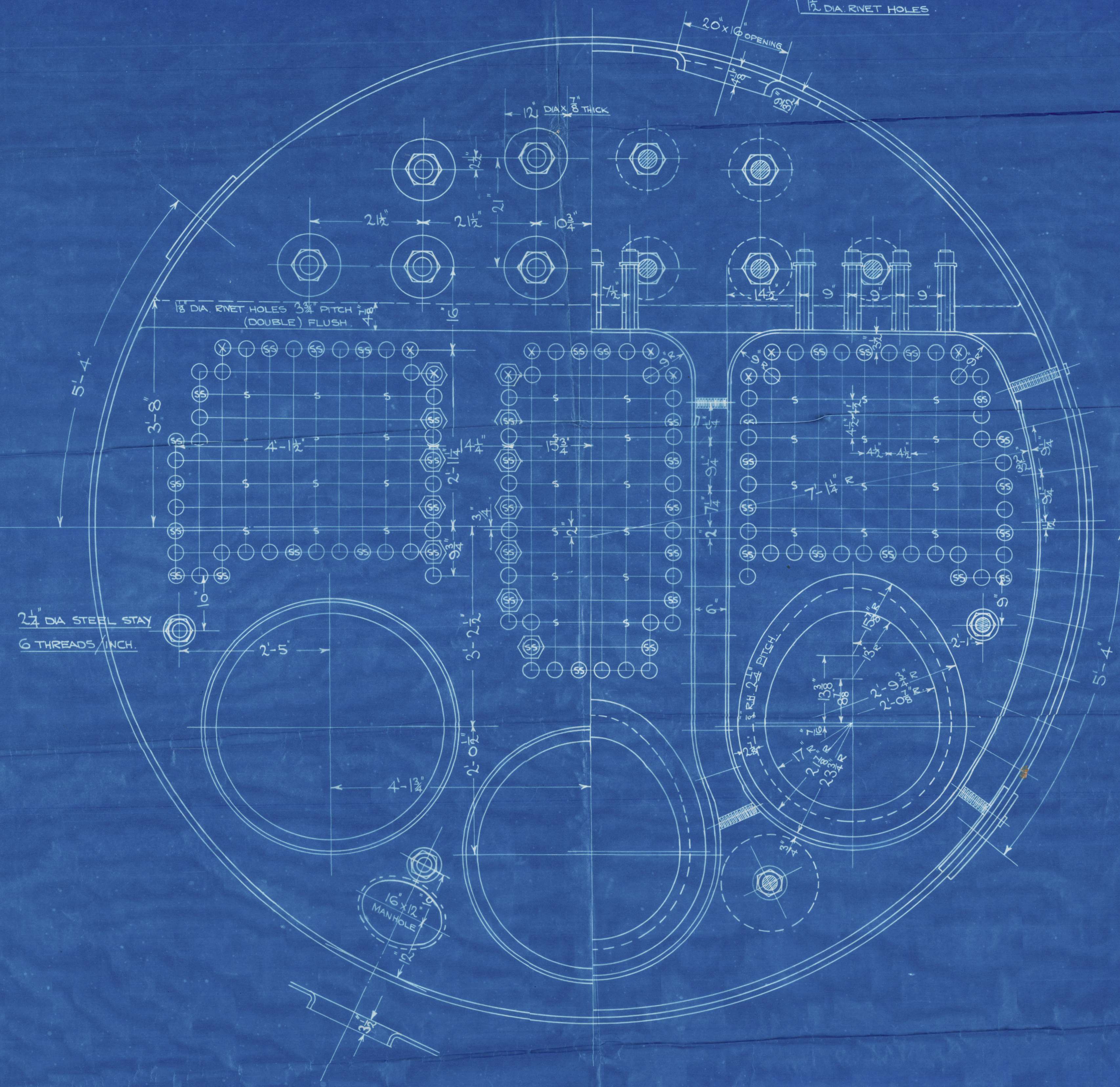
BOILERS No. ~~979~~ 979.980.981  
WORKING PRESSURE = 180 lbs/sq. in.  
TEST " " " 320 lbs/sq. in.  
3 OFF ~~SHIPS~~ LLOYDS SURVEY.  
SCALE = 1" = 1 FOOT.

LIMIT OF TENSILES.		
SHELL BUTTS & GIRDERS	28 TO 32 TONS	SIEMENS MARTIN STEEL
OTHER PLATES	26 " 30 "	" " " "
LONGITUDINAL STAYS	28 " 32 "	" " " "
SCREWED STAYS	26 " 30 "	" " " "
RIVET BARS	26 " 30 "	" " " "
TUBES	"	WROUGHT IRON

BOILER PARTICULARS.		
	1 BOILER	3 BOILERS
HEATING SURFACE OF TUBES	2080 sq. ft.	6240 sq. ft.
" " FURNACES	144 "	432 "
" " COMB. CHAMBERS	260 "	780 "
" " BACK TUBE PLATES	54 "	162 "
" " FRONT " "	40 "	120 "
TOTAL	4078 "	12234 "
GRATE SURFACE (5'-6" BARS)	63.25	189.75
RATIO H.S. G.S.		40.8
AREA THRO' TUBES		

SCREWED STAYS			
MARK	DIA.	THREAD	AREA
○	1 1/8"	9	1.73 sq. in.
⊙	1 7/8"	9	2.36 "
⊗	2 1/4"	9	3.49 "

ALL SCREWED STAYS TO BE NUTTED AT EACH END EXCEPT AT SHELL.



LLOYDS

CENTRAL MARINE ENGINE WORKS,  
WEST HARTLEPOOL.

CENTRAL MARINE  
DRAWING OFFICE  
13 NOV 1925  
No. 40624

17-11-25

LLOYDS 0624  
87.2



# MAIN BOILERS

CENTRAL MARINE  
ENGINE WORKS

WM GRAY & CO LD.

S.S. Nos 979-980-981

No 3680  
Lloyds Test  
320 lb  
VVP 180 lb  
22.3.26 RDS

No 979

Npl Rpt  
16414.



No 3684  
Lloyds Test  
320 lb  
4.6.26 RDS

No 980.

No 3688  
Lloyds Test  
320 lb  
VVP 180 lb  
9.11.26 RDS

No 981.  
N. H. L.  
16465



© 2020

Lloyd's Register  
Foundation

W350-0069