

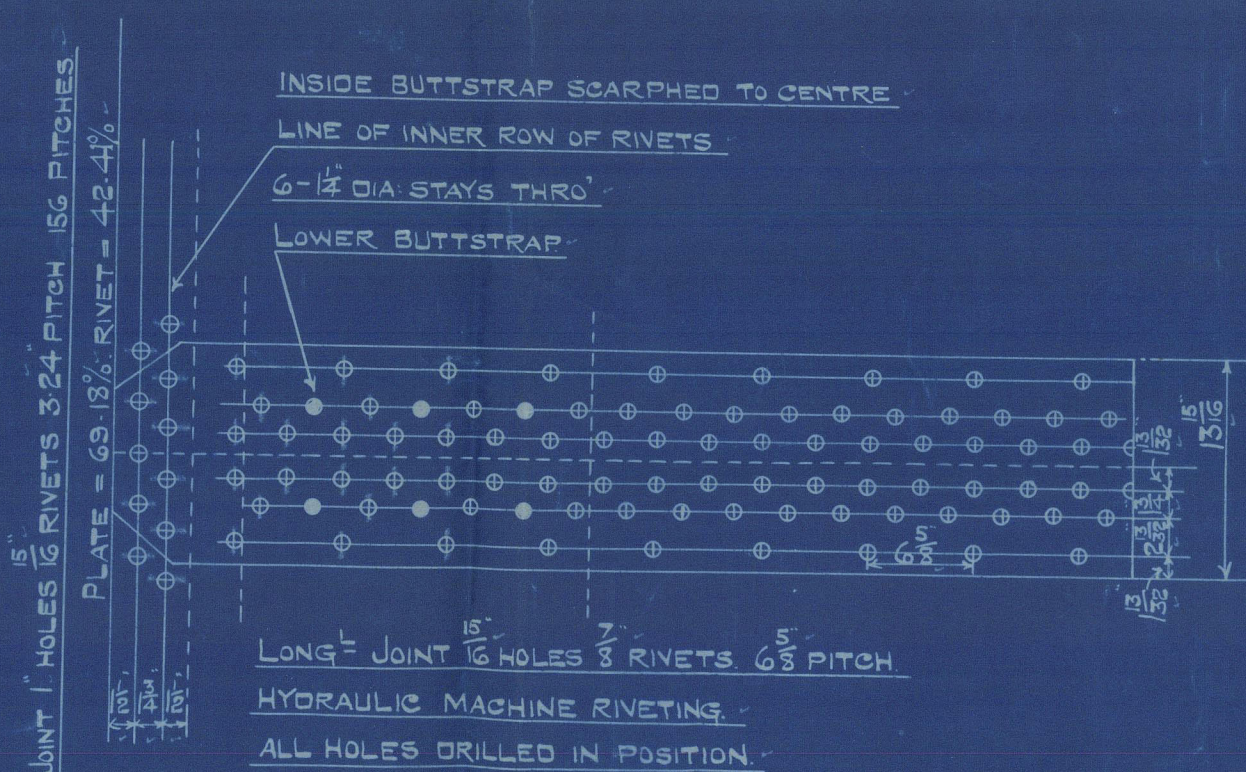
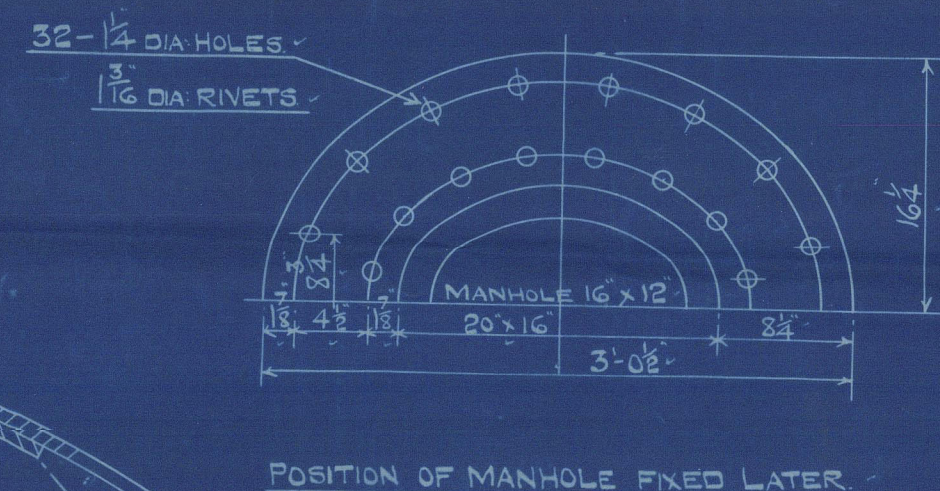
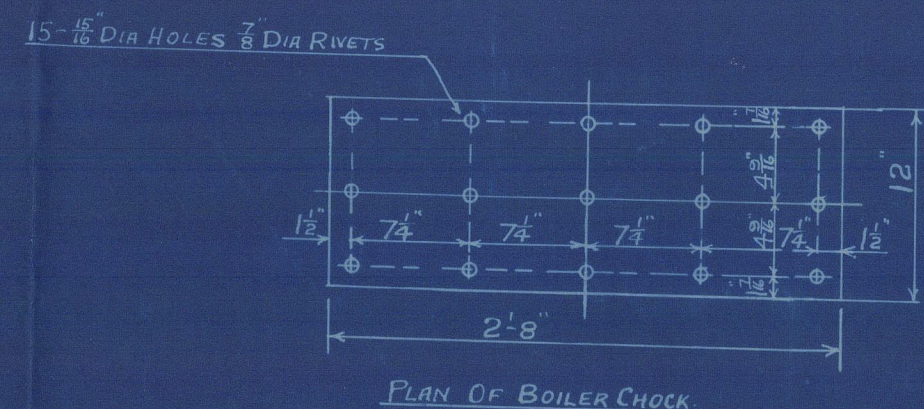
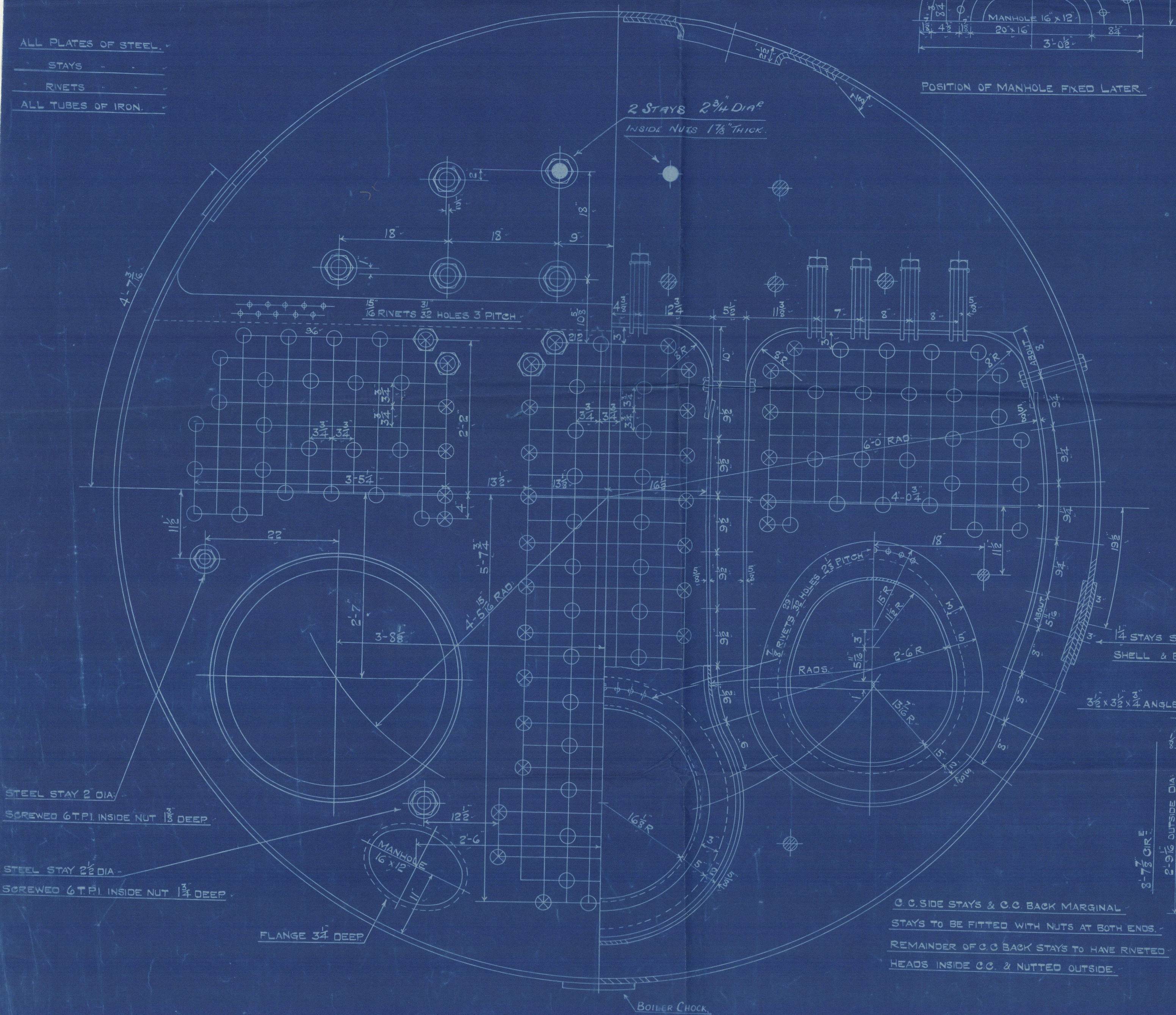
# TENSILE STRENGTH OF MATERIALS.

CYL <sup>d</sup> SHELL PLATES & BUTTSTRAPS	30 TO 34 TONS/D <sup>2</sup>
GIRDER PLATES	28 TO 32
MANHOLE DOUBLING	27 TO 30
ALL OTHER PLATES & FURNACES	26 TO 30
LONG <sup>2</sup> STEEL STAYS	28 TO 32
SCREW STAY & RIVET BARS	26 TO 30

WORKING PRESSURE - 150 LBS/D<sup>2</sup>

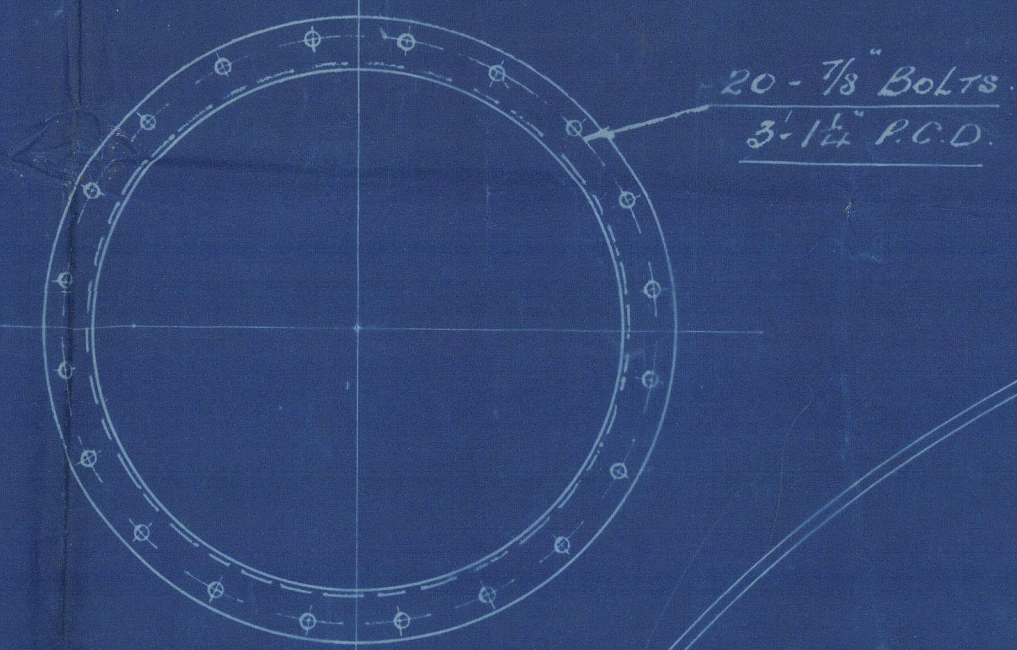
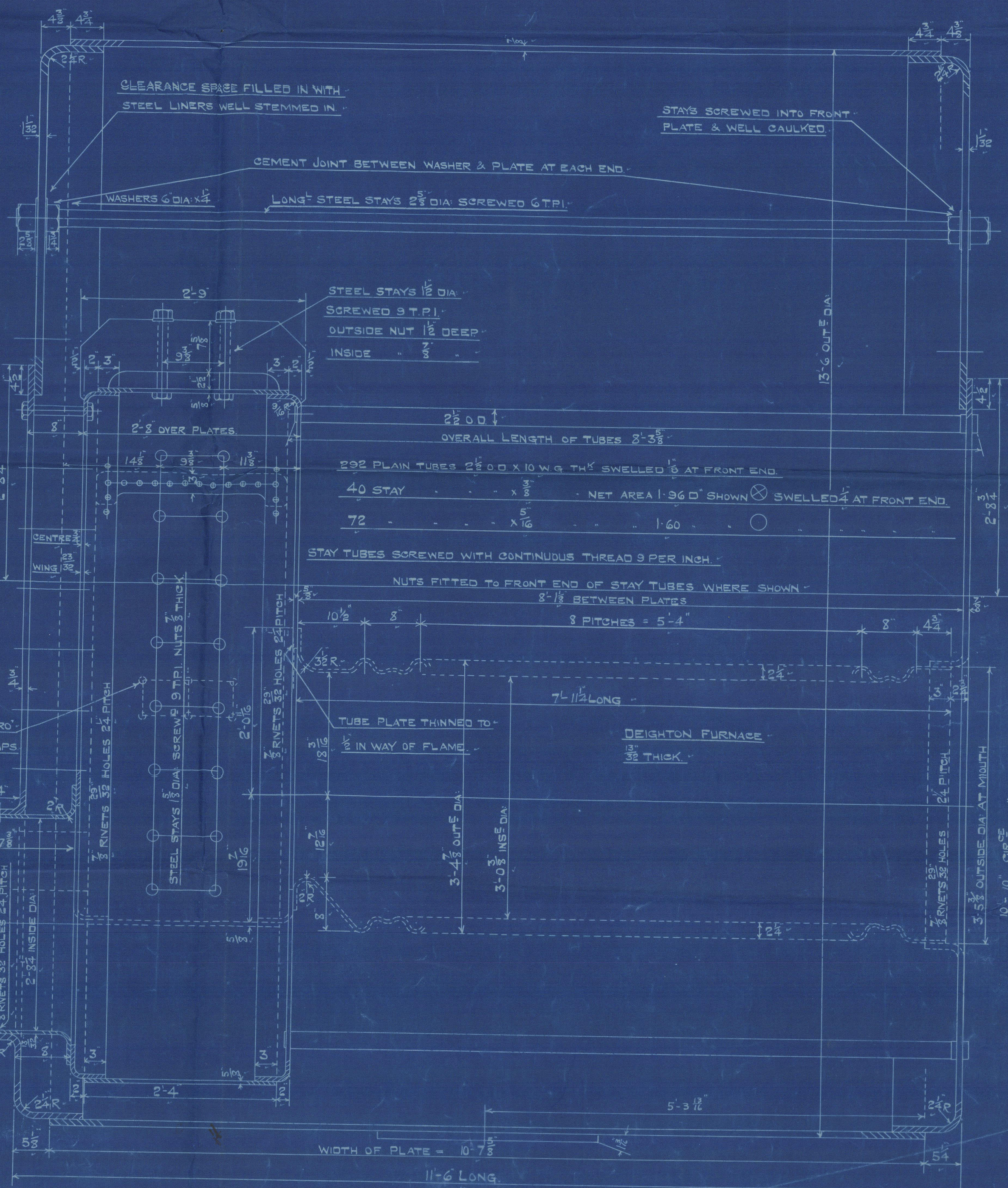
TEST - 275

ALL PLATES OF STEEL.  
STAYS  
RIVETS  
ALL TUBES OF IRON.

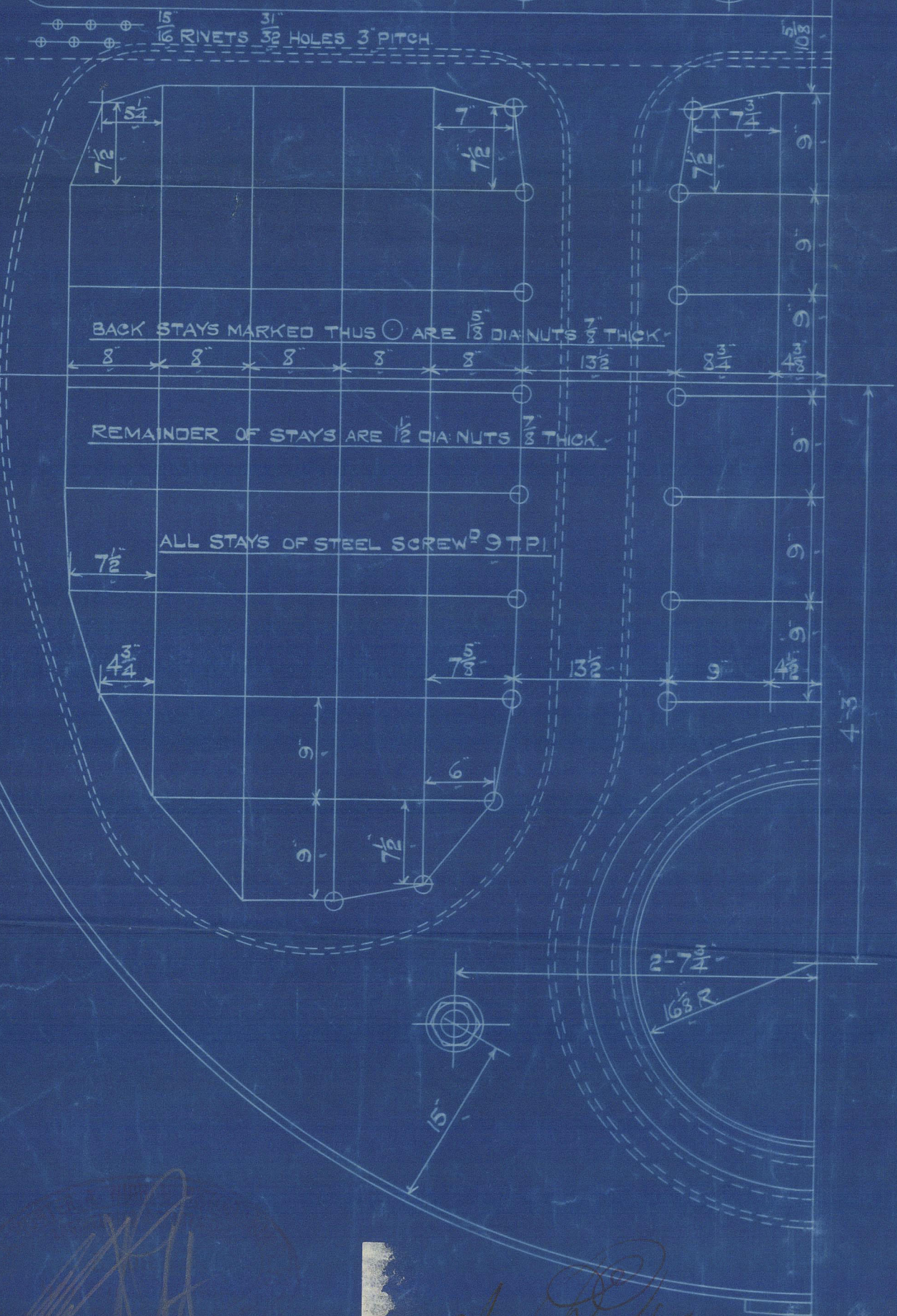


OUTER BUTTSTRAP - 2 1/2 THICK  
INNER - 3/8

PLATE = 35.34%  
RIVET = 35.55%  
COMBINED = 33.50%



DRILLING IN ANGLE ON EXHAUST GAS FLUE



B.375

GLE  
MH

13/8/23

## AUXILIARY & WASTE HEAT BOILER.

1 OFF.

SCALE 1" = 1' FOOT

12  
Nº1196

W351-0018



1196. duplicate 1162

S H 1000

Waste Heat Auxiliary Boilers B. 375

Test pressure 275 lbs

Working Pressure. 150 lbs

submitted to London 26/8/24

S & S are returned 6/9/24

1196

M. S. BRITISH PETROL  
NEWCASTLE ON TYNE.

Report No. 79675

W 351 -

0018



RETAIN



© 2021

Lloyd's Register  
Foundation