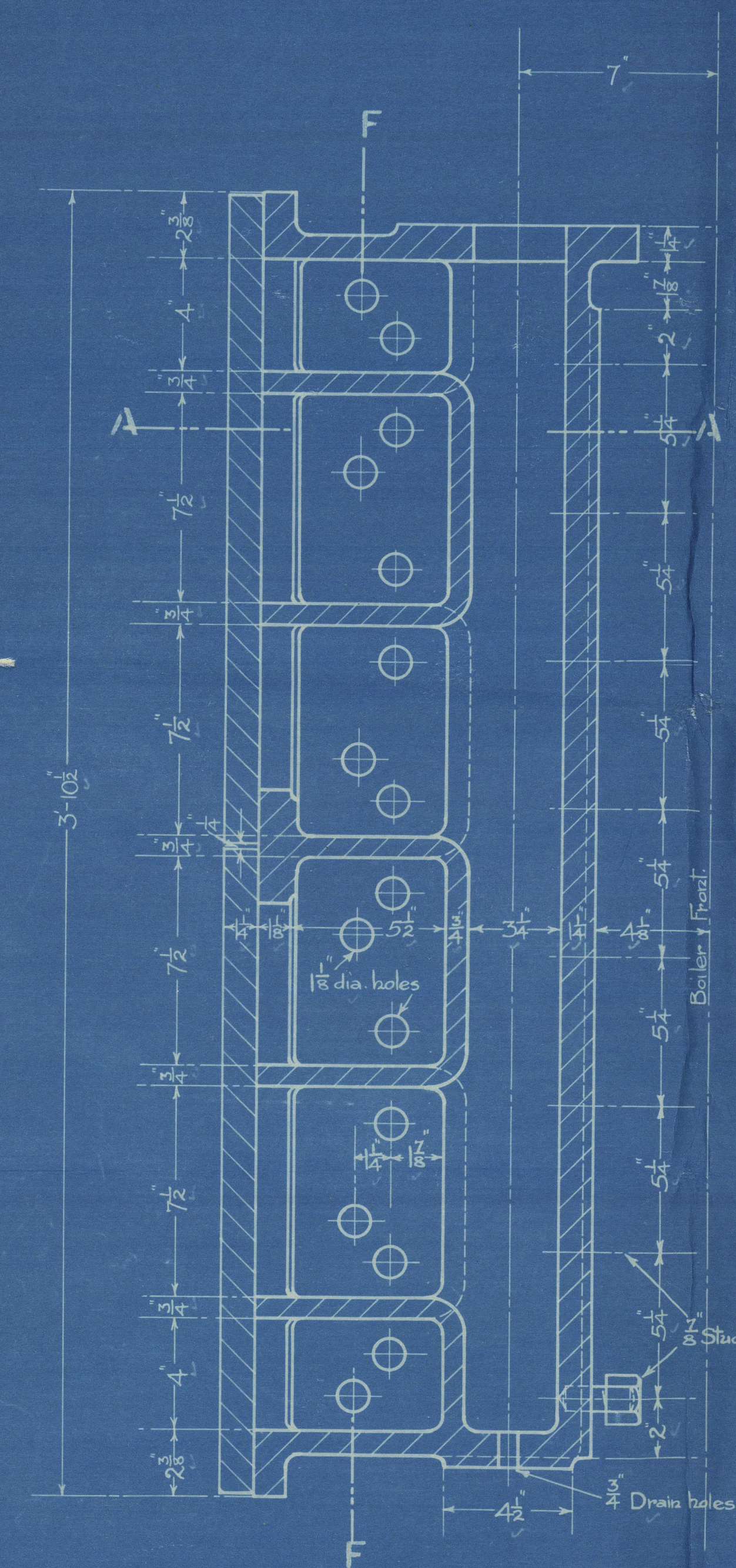
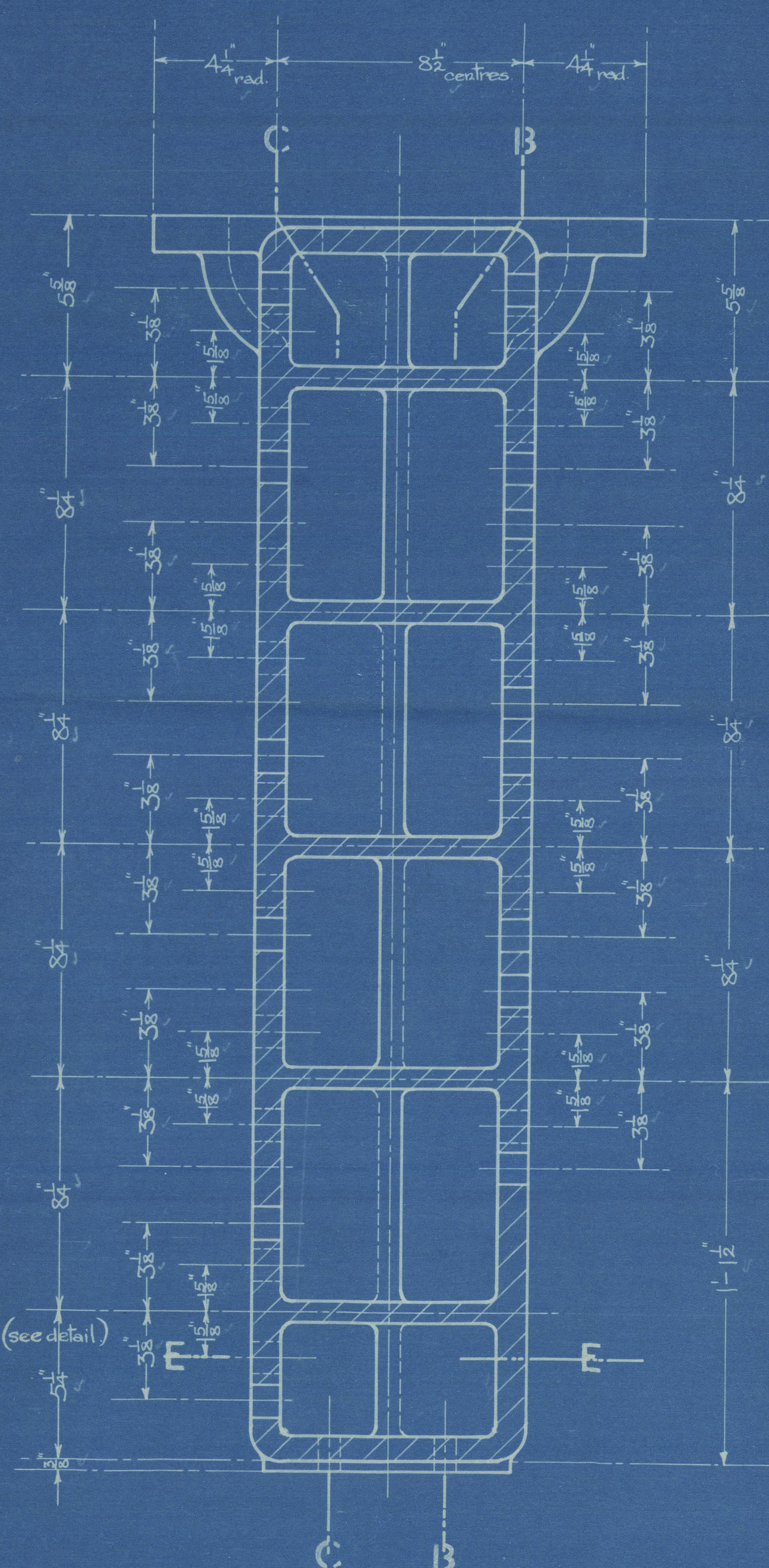


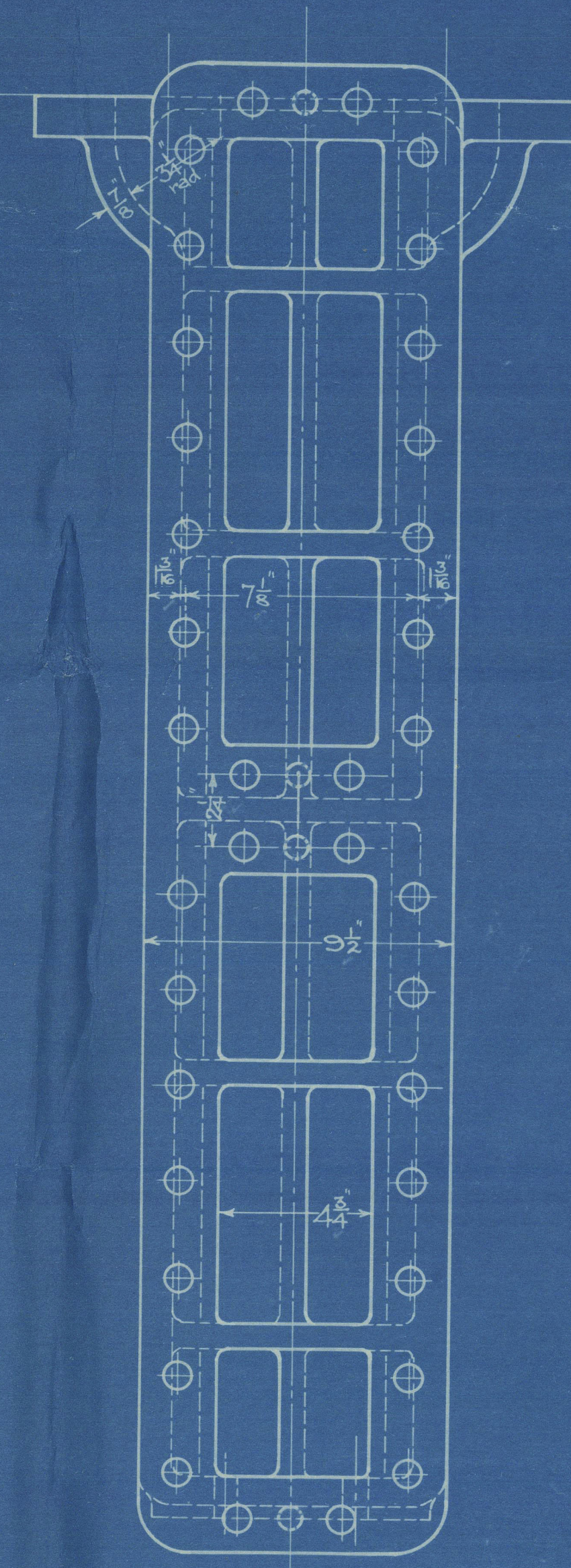
H. 8. 21



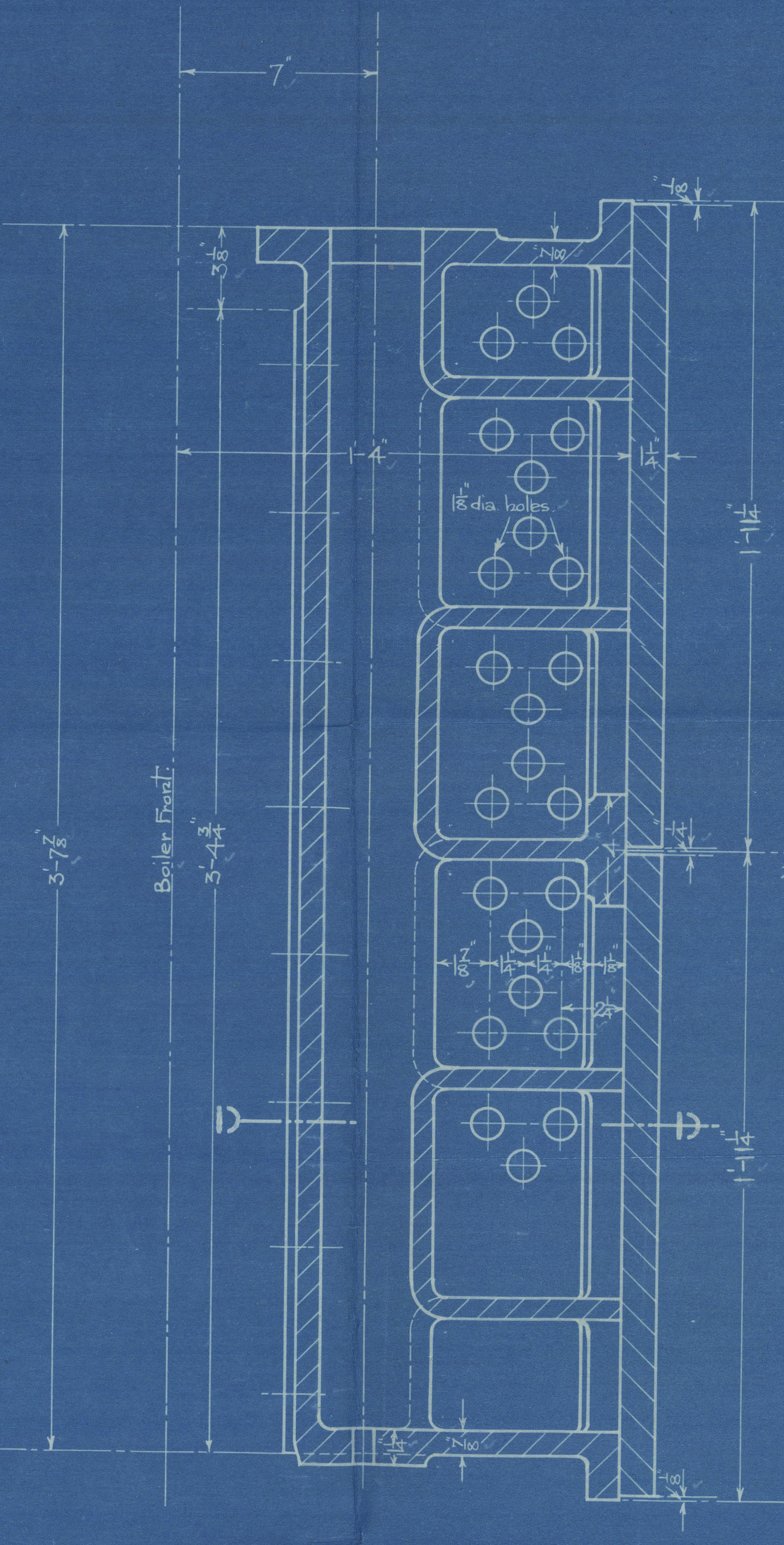
SECTION THROUGH B.B.



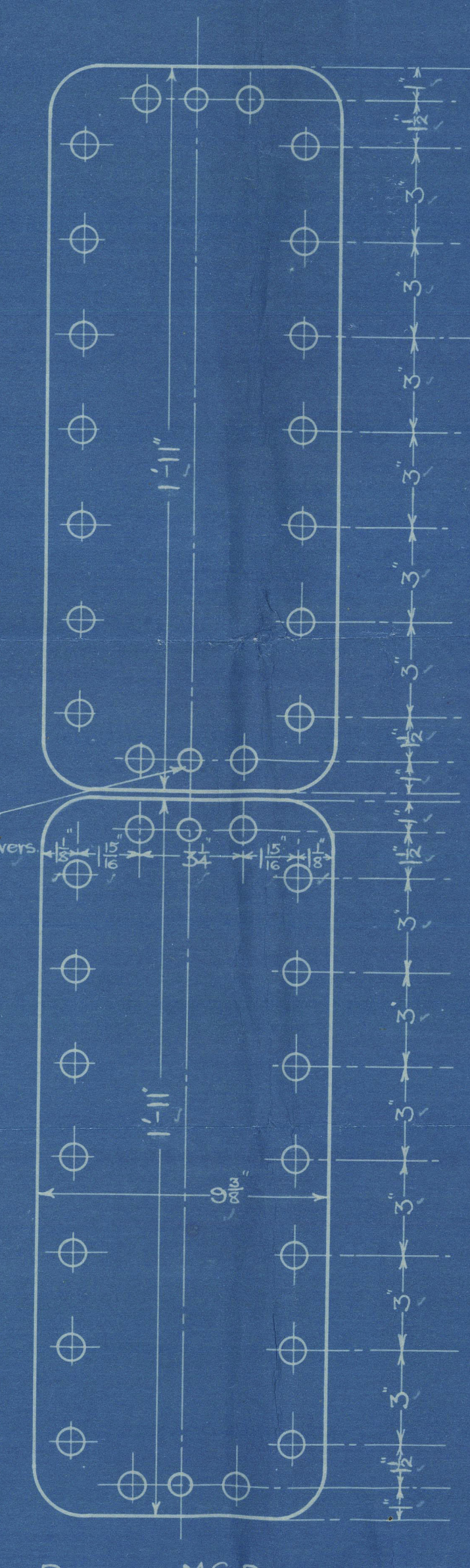
SECTION THROUGH F.F.



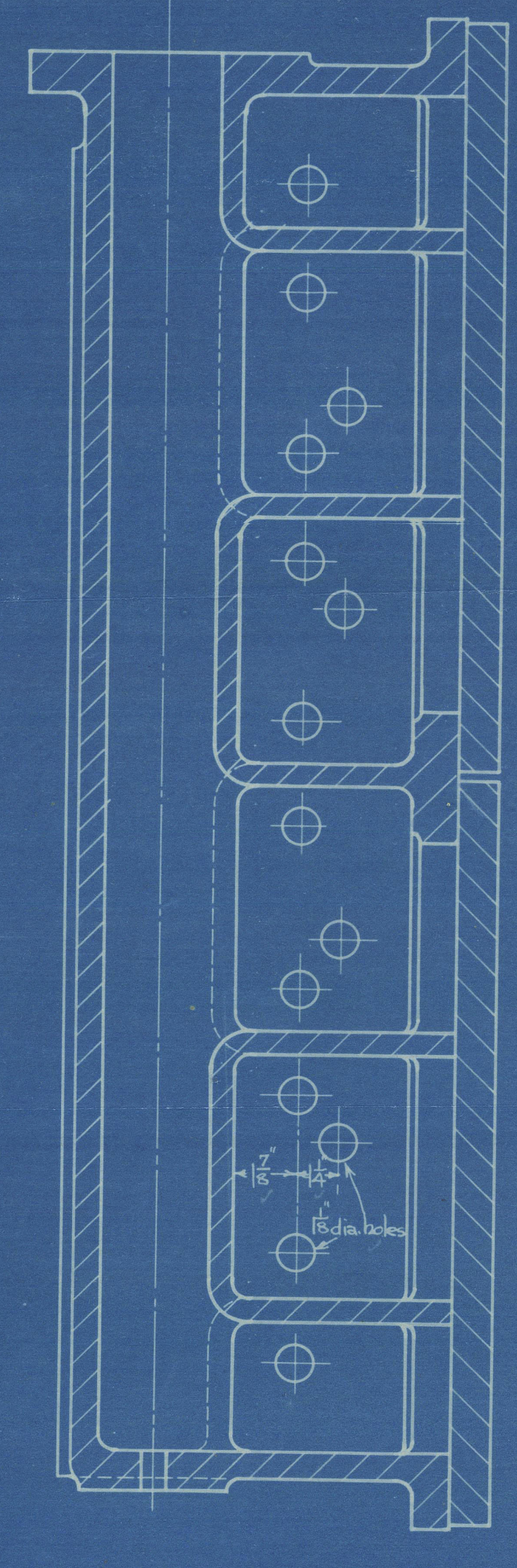
FRONT ELEVATION (DOORS REMOVED)



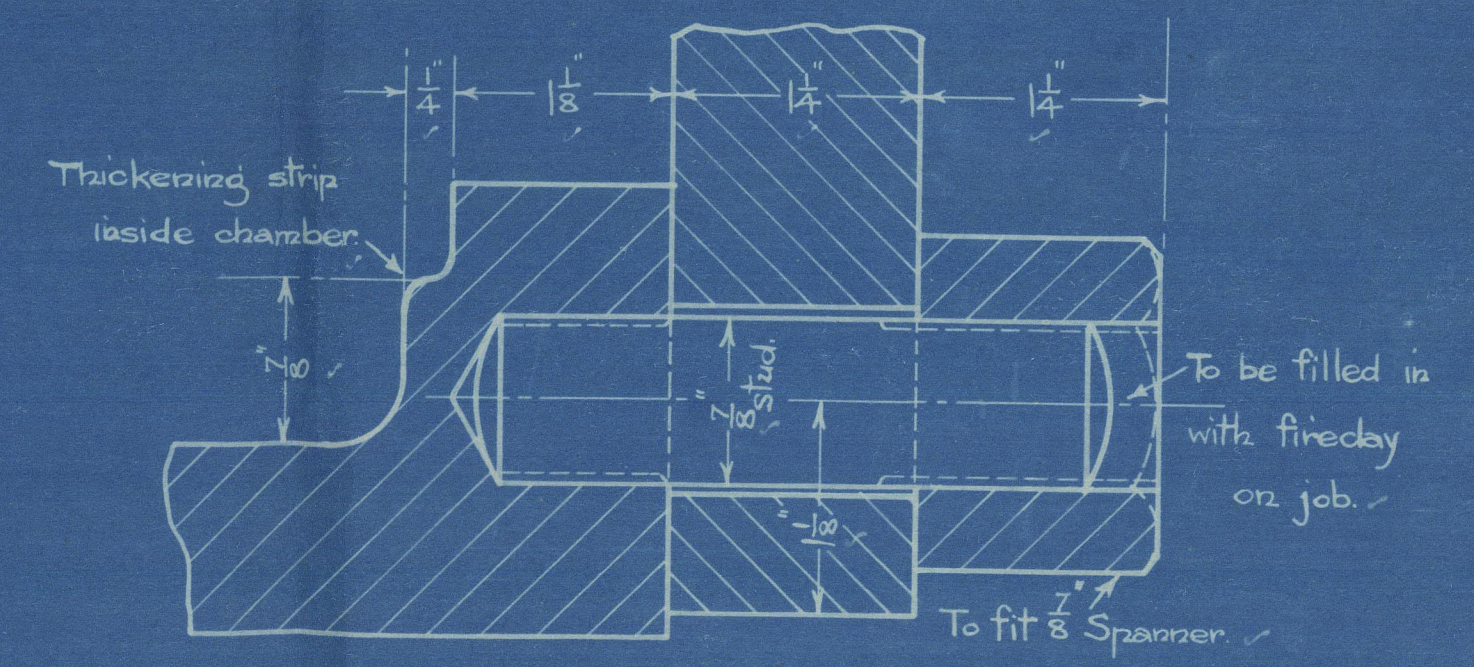
SECTION THROUGH C.C.



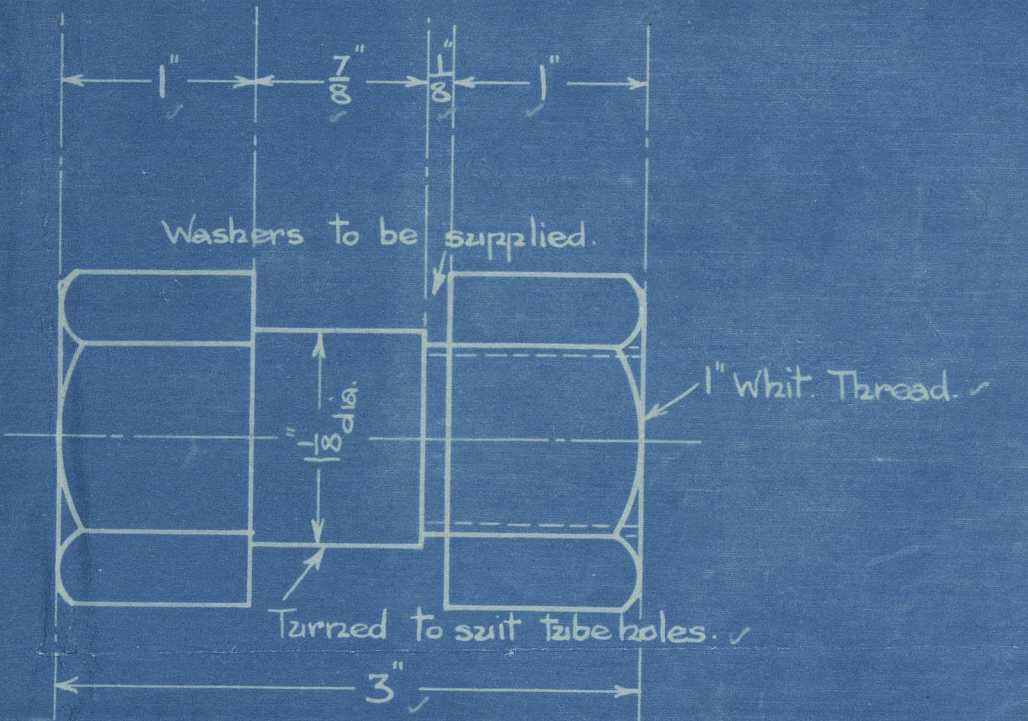
DETAIL OF M.S. DOORS FOR HEADERS



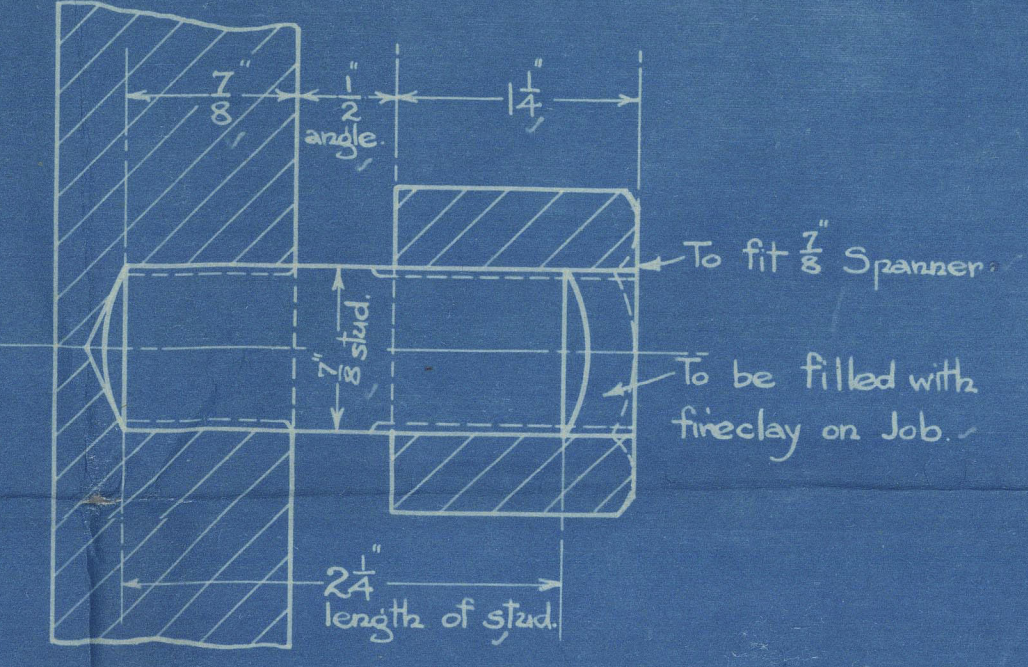
Detail of Drilling for Left Hand Header.



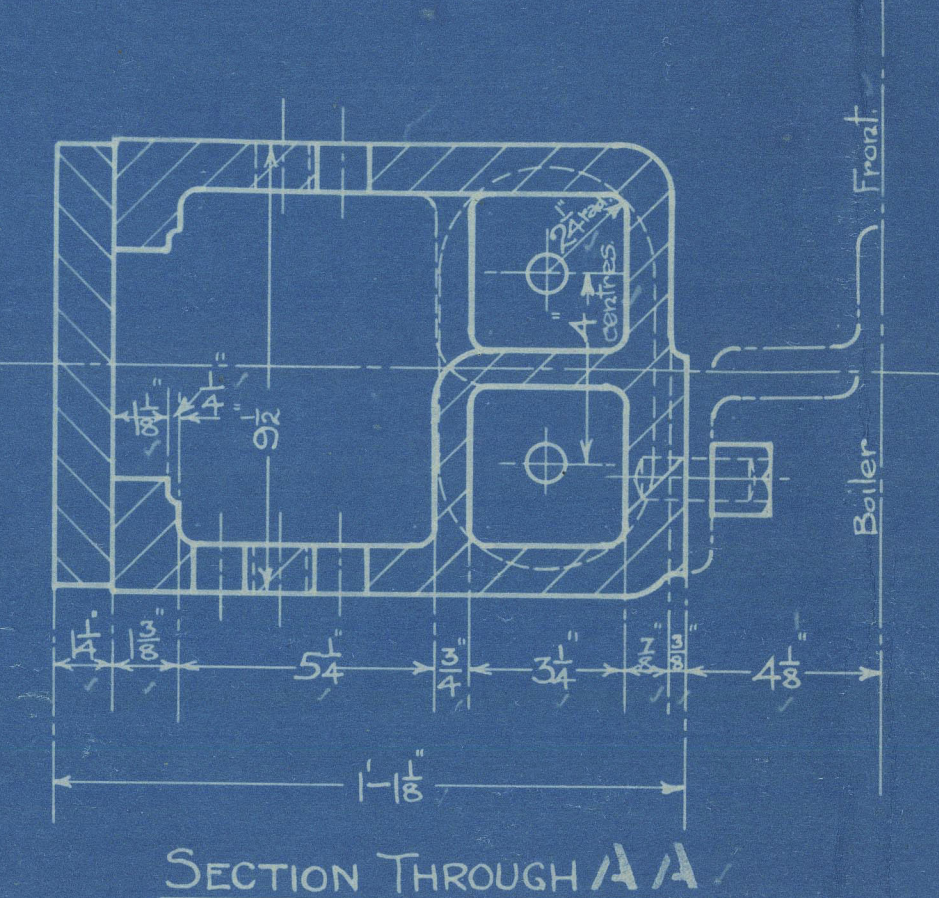
DETAIL OF STUDS & NUTS FOR COVER.  
36 OFF THIS PER HEADER (WORKING)  
2 " " " (SPARE)  
(FULL SIZE)



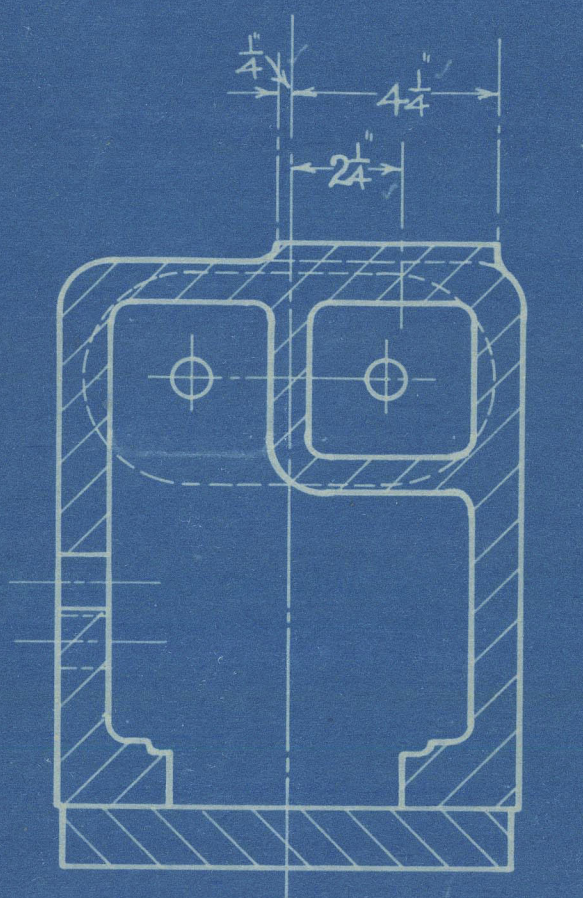
DETAIL OF PLUGS FOR HEADERS (FULL SIZE)  
5 OFF THIS PER HEADER (SPARE)



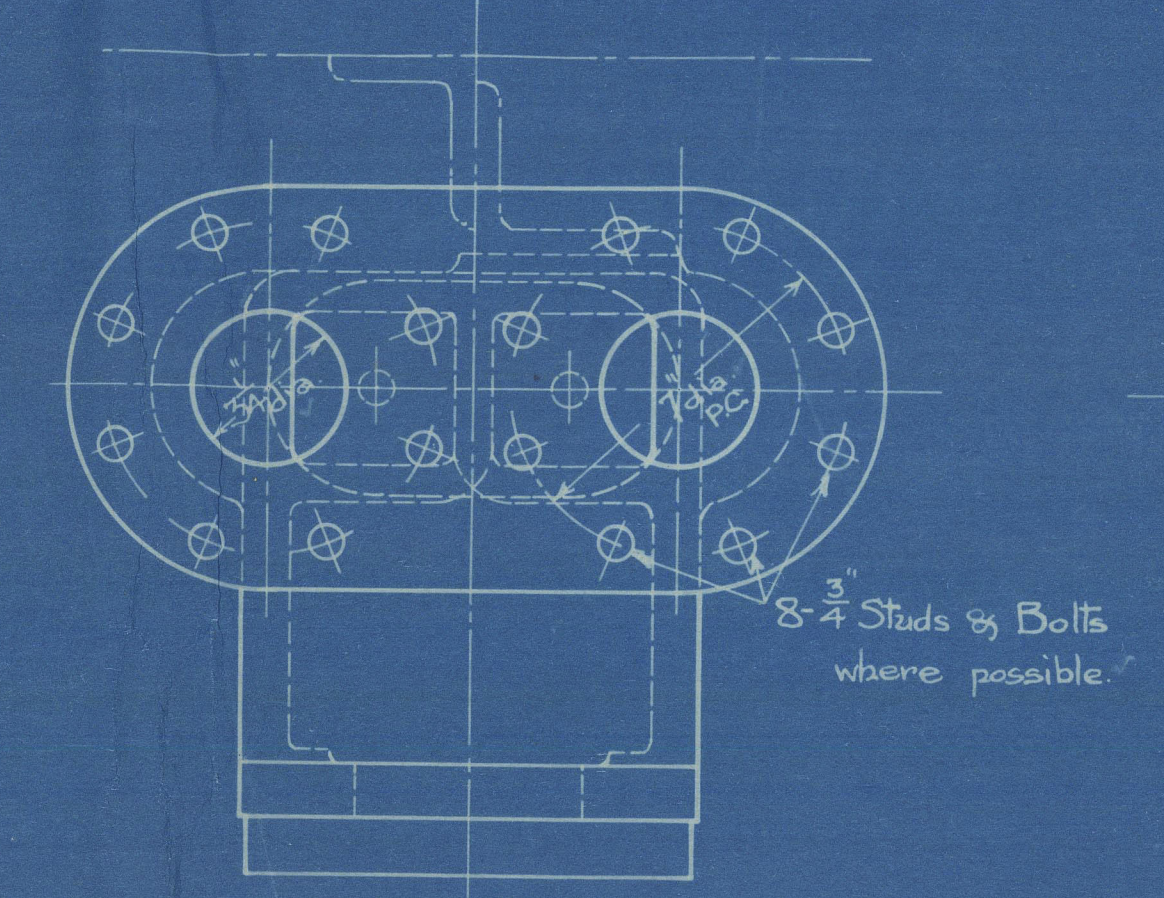
DETAIL OF STUDS & NUTS FOR SECURING (FULL SIZE)  
ANGLES TO HEADER  
8 OFF THIS PER HEADER  
2 " " " SPARE



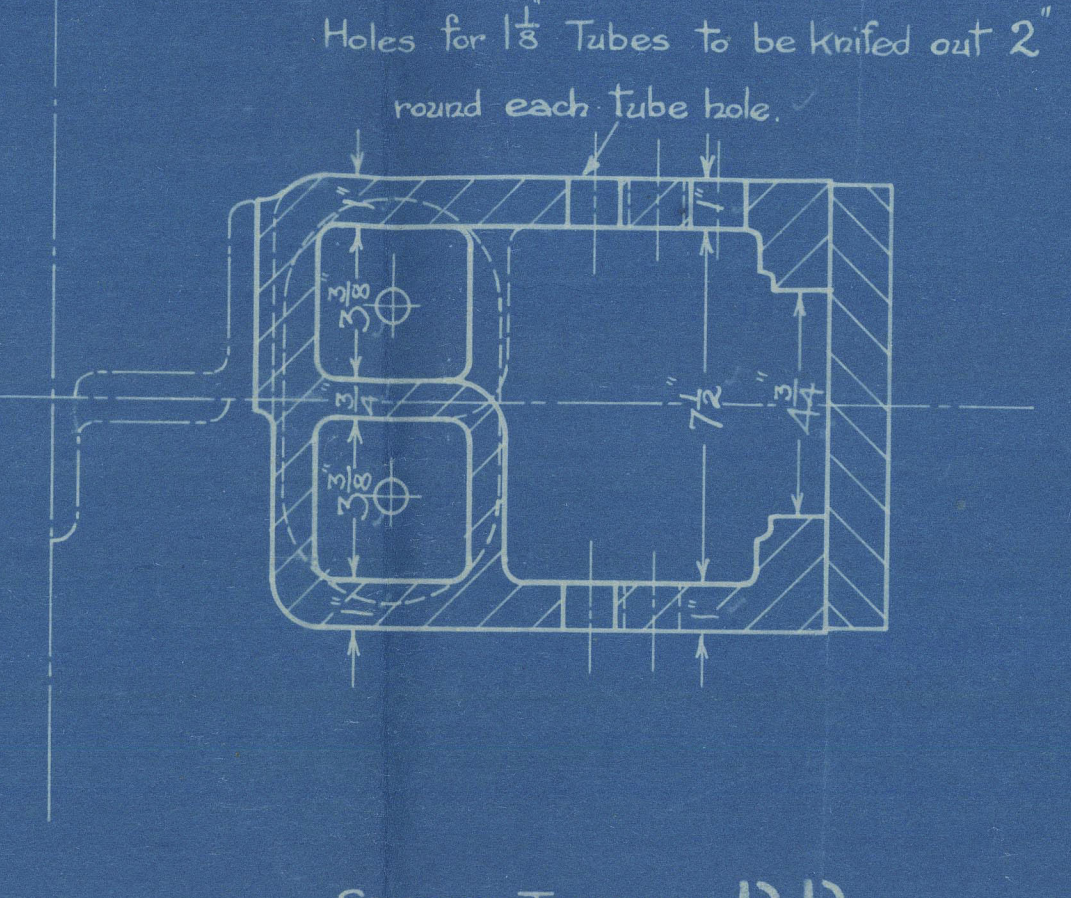
SECTION THROUGH A.A.



SECTION THROUGH E.E.



PLAN



SECTION THROUGH D.D.

Allowance to be made for Machining where lined Red. All joints to be faced and scraped.  
Working pressure 200 lbs./sq. inch. Test pressure 600 lbs./sq. inch.  
To the requirements of LLOYD'S Survey.  
No. required 3 R.H. & 3 L.H. Headers per Ship.  
Total for 2 Ships. = 12 Headers, 6 R.H. & 6 L.H.

Whitworth Threads throughout.  
JGR 98/10/12  
24 11/5/12

SCALE 3" = 1 FOOT.

# CAST STEEL MARINE SUPERHEATER HEADER (RIGHT HAND SHOWN)

THE SUPERHEATER CORP. LTD.  
14, NEW BURLINGTON STREET LONDON W1  
MARINE DEPT.  
DRAWING NO. M 483/5.  
DATE 13-6-1921.



*Superheater*

$\frac{5}{5}$  British Premier

Invc 76277

RETAIN

W351 - 0049



© 2021

Lloyd's Register  
Foundation



Superheater

Palmer 925/31

Gen. Box 3503.

London

copies

RETAIN



© 2021

Lloyd's Register  
Foundation