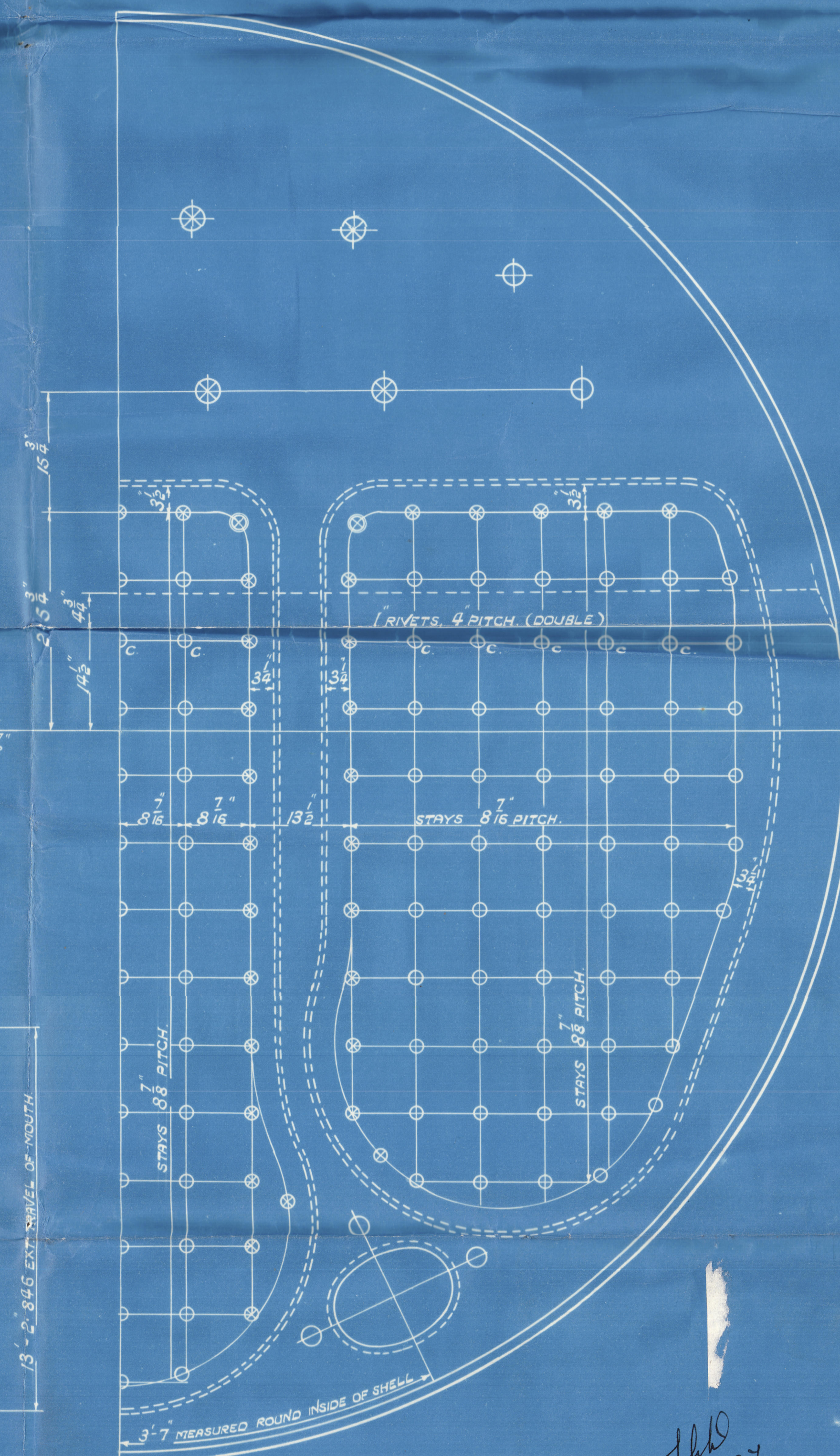
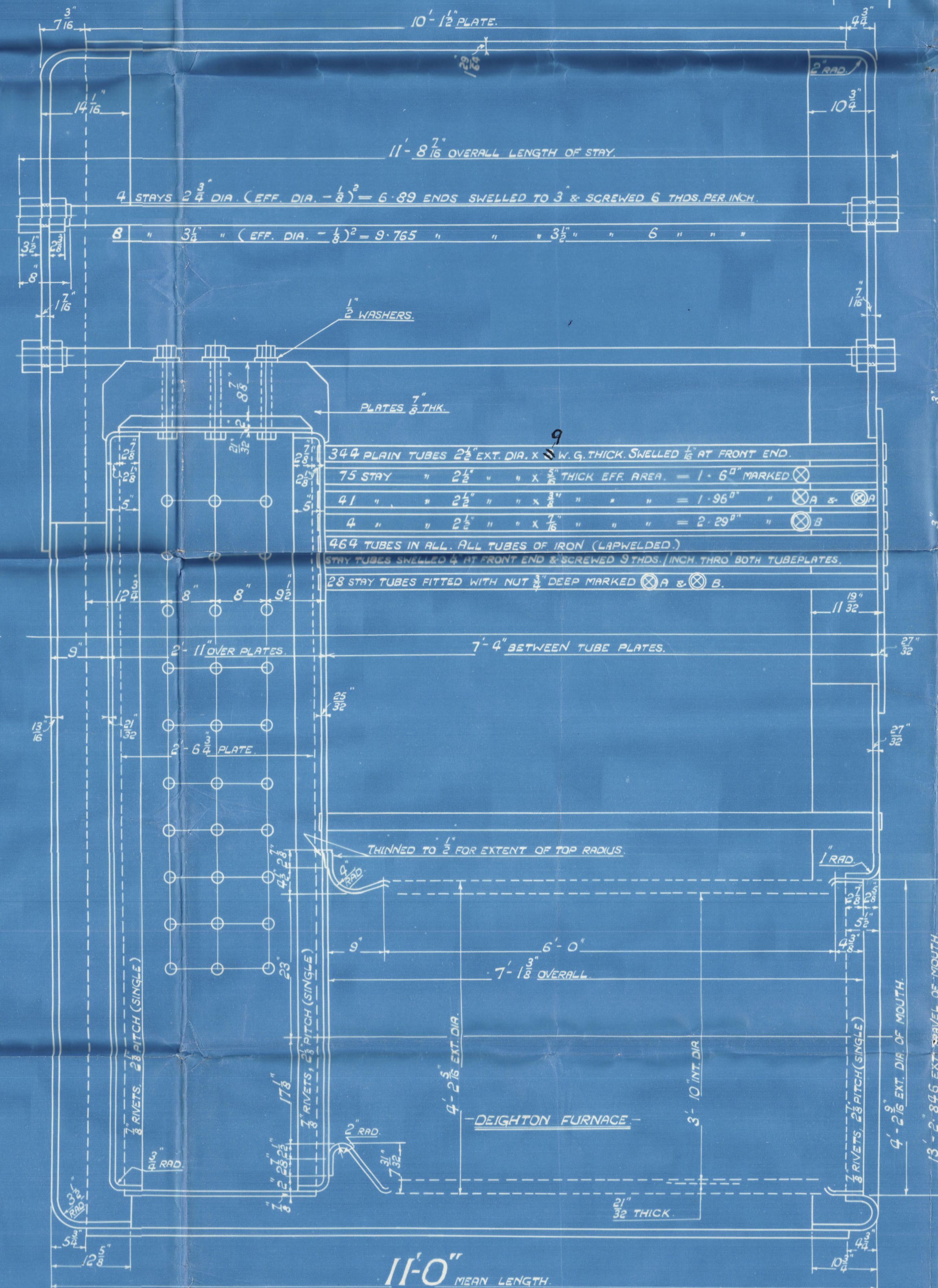
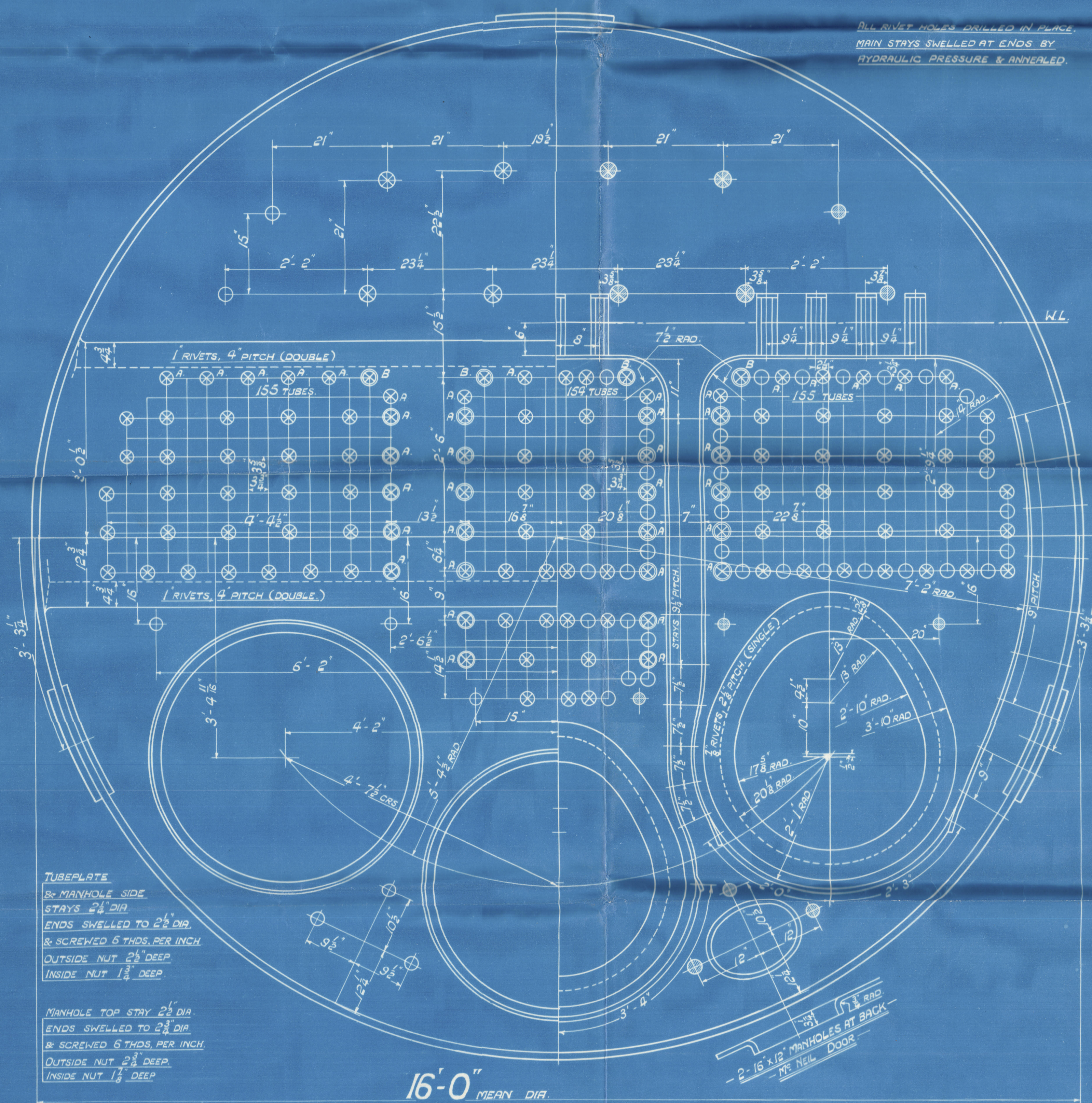
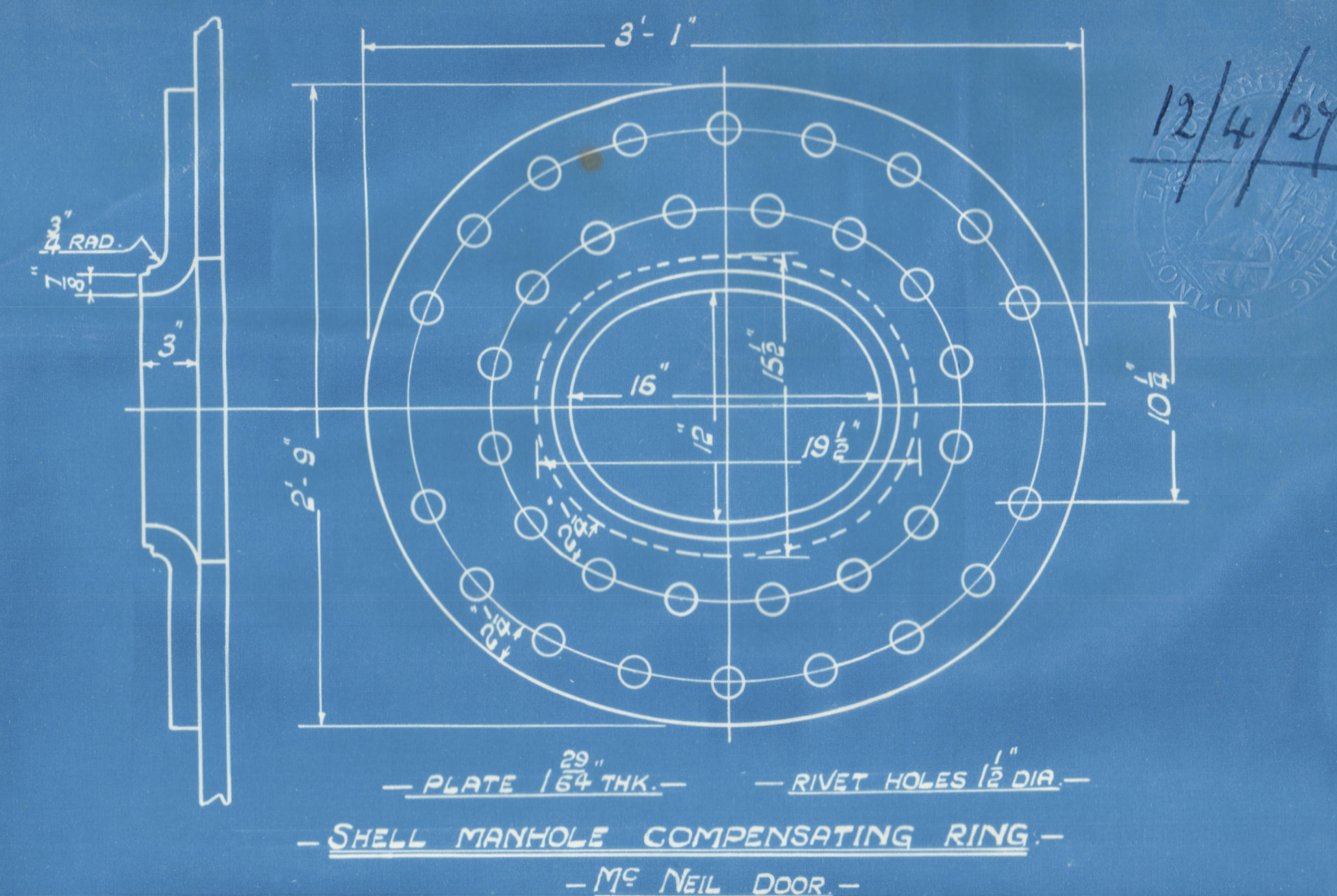
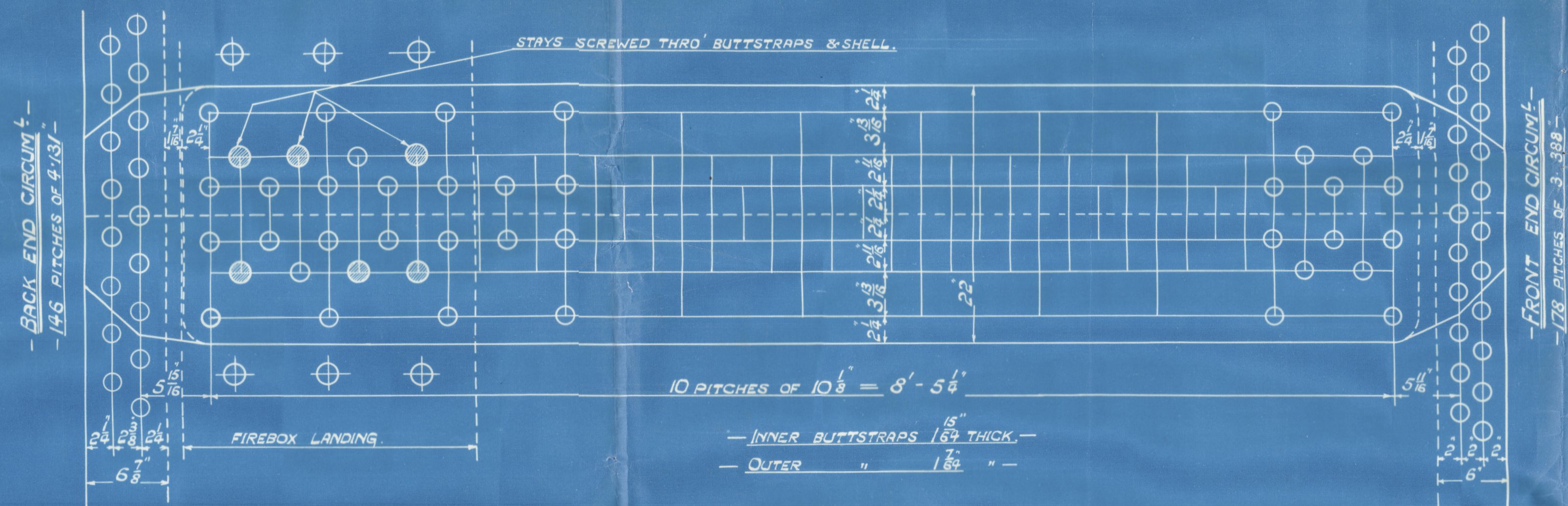


- RIVETING -			
	LONG $\frac{1}{4}$	BACK END CIRC $\frac{1}{4}$	FRONT END CIRC $\frac{1}{4}$
RIVET HOLE DIA.	1 1/2"	1 1/2"	1 5/8"
PITCH	10.125"	4.131"	3.388"
% PLATES	85.18	63.7	61.3
% RIVET	92.4	48.3	45.15
% COMBINED	88.86	—	—

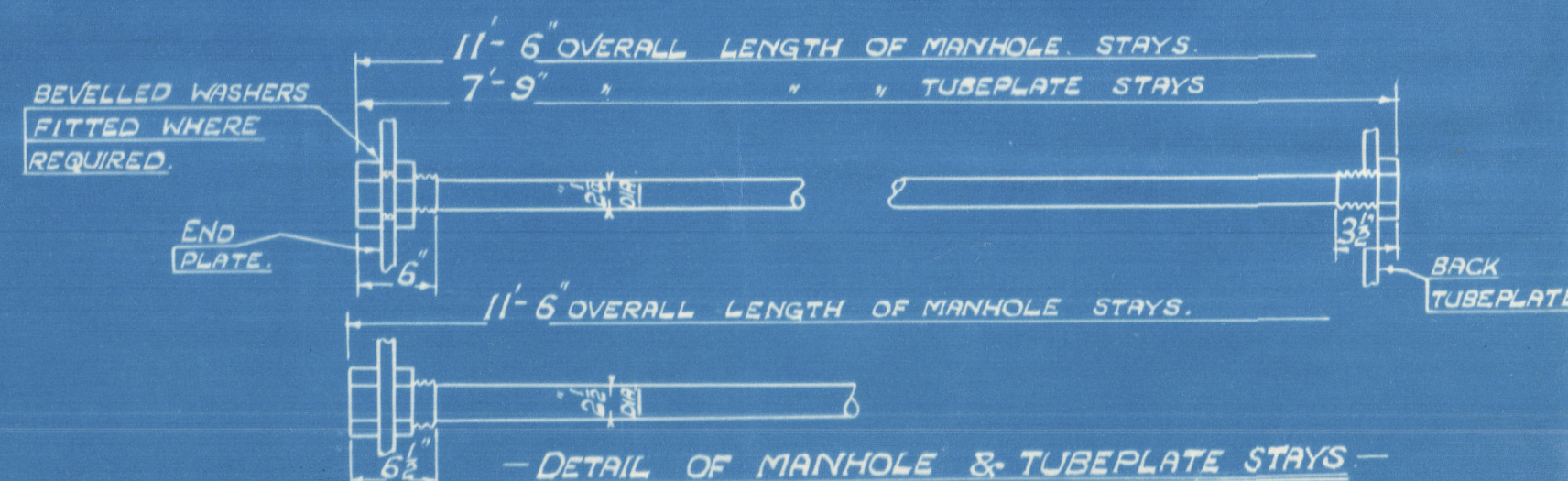
- LIMITS OF TENSILE STRENGTH & MATERIAL -	
SHELL, BUTTSTRAPS AND GIRDERS.	28 to 32 TONS
OTHER PLATES	26 " 30 "
FLUINACES	26 " 30 "
MAIN STAYS.	28 " 32 "
SCREWED STAYS.	26 " 30 "
RIVET BARS.	26 " 30 "

\*SIEMENS MARTIN STEEL



- FIREBOX STAYS STEEL -				
POSITION	MARK	DIA.	(DIA - .267)	SCREWED THRS./INCH
TOP SIDES & BACK	○	1 3/8"	1.844	9
BACK TOP ROW, WIDE SPACE	⊗	1 3/8"	2.585	9
TOP CORNER INSIDE	⊗	2 5/8"	3.932	9

ALL FIREBOX STAYS SCREWED THRU BOTH PLATES & NUT FITTED AT EACH END EXCEPT STAYS FROM WING FIREBOXES TO SHELL & STAYS MARKED 'C' IN BACK BOTTOM END WHICH APPROX  $\frac{3}{8}$ " & ARE CRUMPLED  
ALL  $1\frac{1}{2}$ " NUTS  $\frac{3}{8}$ " DEEP EXCEPT ON GIRDER TOPS WHERE THE OUTSIDE NUTS ARE  $1\frac{1}{2}$ " DEEP  
ALL  $1\frac{1}{2}$ " & 2" NUTS 1 DEEP



— MAIN BOILER

## MAIN BOILER

—3 OFF EACH CONT

CON<sup>TS</sup> N<sup>OS</sup> 868-869-870

WORKING PRESSURE 200 LBS. PER SQ. INCH

TEST " 350

TO PASS LLOYDS SURVEY

— SCALES, 1" & 1/2" — ONE FOOT. —

OT 32620  
TRIN 5052  
TRACED 5TH APRIL 1947.  
W368-0101



GLASGOW

D. ROWAN & CO. LTD.

(3) BOILERS NO 868  
WP-200LBS

AMENDED PLAN-9-4-24

DUPLICATE OF NO 870

ROBERT DUNCAN & CO  
S/S NO 381

NO 17712

LLOYD'S TEST

350 LBS

WP-200LBS

L.C.D. 19-12-27

Cape St Andrew

GLASGOW REPORT NO 47750

See Rpt No 18856

RETAIN

Basement



© 2020

Lloyd's Register  
Foundation

W368-0101