

28/1/35

FREEBOARD PARTICULARS.			
LENGTH B.P. TO TIP OF FUNNEL	225'0"	SHEER FORWARD	3'9"
LENGTH ON LWL	224'7"	SHEER B.L. FROM FORWARD	2'0 1/2"
BREADTH EXT.	36'0"	SHEER AFT	1'9"
BREADTH MID	35'7 1/2"	SHEER B.L. FROM AFT	1 1/2"
DEPTH MID	17'2 1/2"	RAISED QUARTER DECK	16'7 1/2", 8'6"
DEPTH OF HOLD	15'27"	BRIDGE	15'7 1/2", 7'0"
UNDER DECK TONNAGE	965 TONS	SUNK FORECASTLE	25'36" 3'0"
DISPLACEMENT CORF.	764	RAISED QUARTER DECK TYPE	
		NO CEILING ON TANK TOP	
		DEEP BULB ANGLE FRAMES	NO CARGO BATTENS FITTED

ALL SECTIONS TO
OLD BRITISH STANDARD.

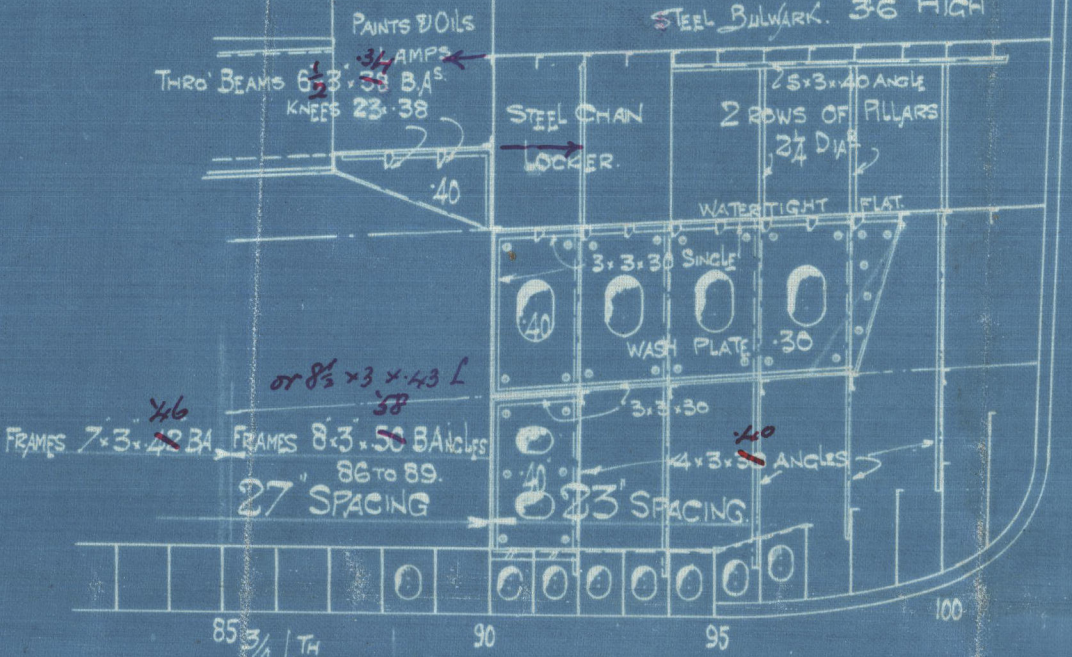
No 309 & 310 Profile and Deck Plans

Class 100 A1 Special Survey
Scale 1/8" = One Foot.

S. P. AUSTIN & SON, LTD.
SHIPBUILDERS & REPAIRERS,
WEAR DOCK YARD,
SUNDERLAND.
Date 22/1/35
Reference No. 1111



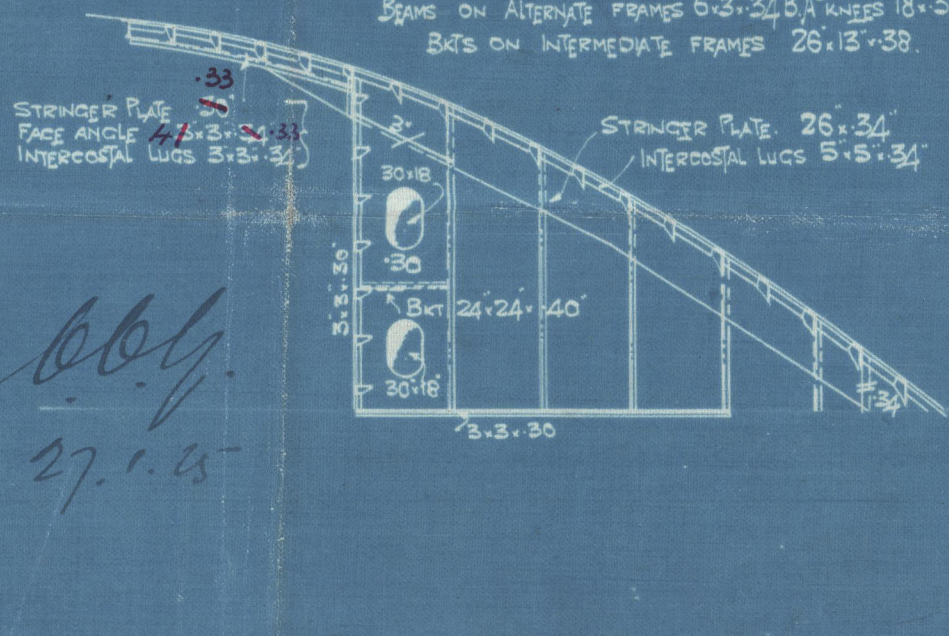
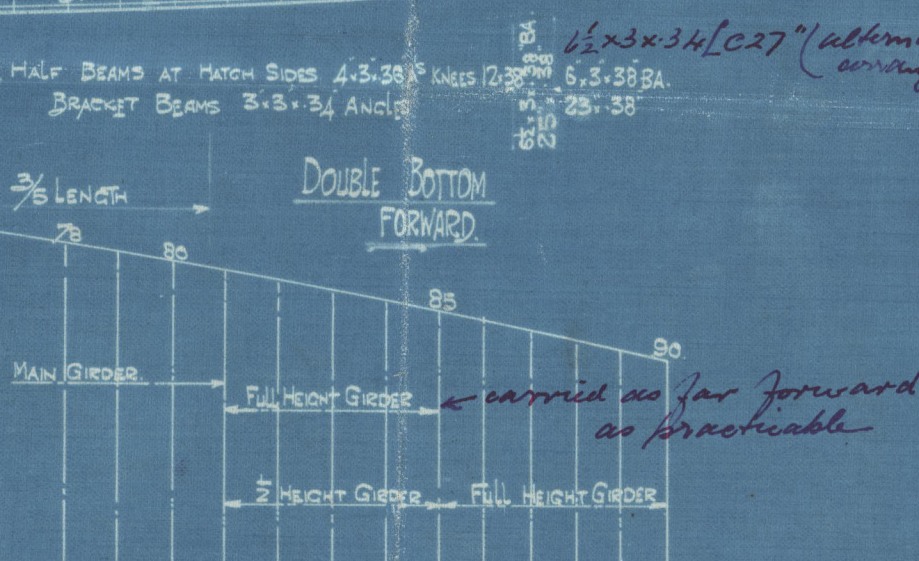
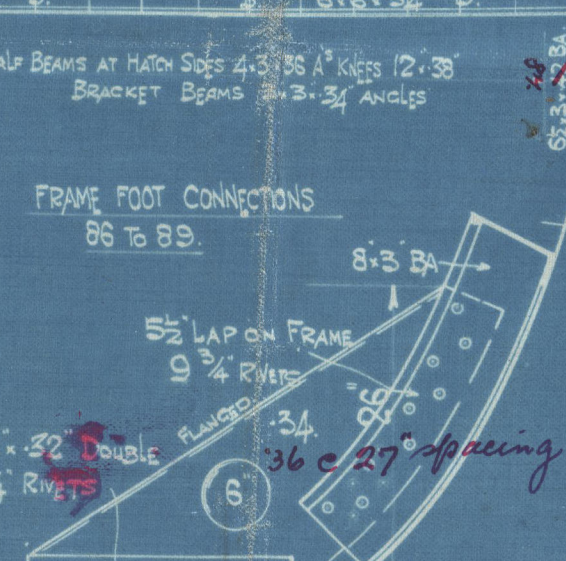
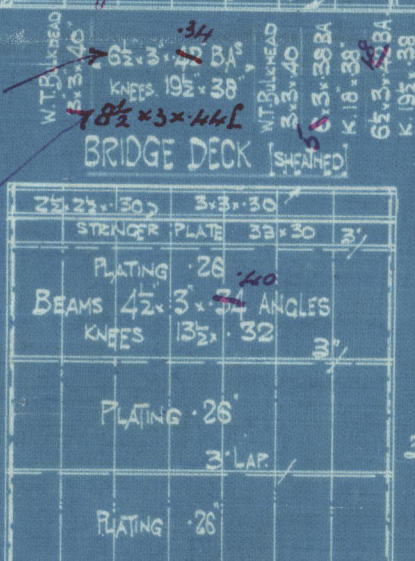
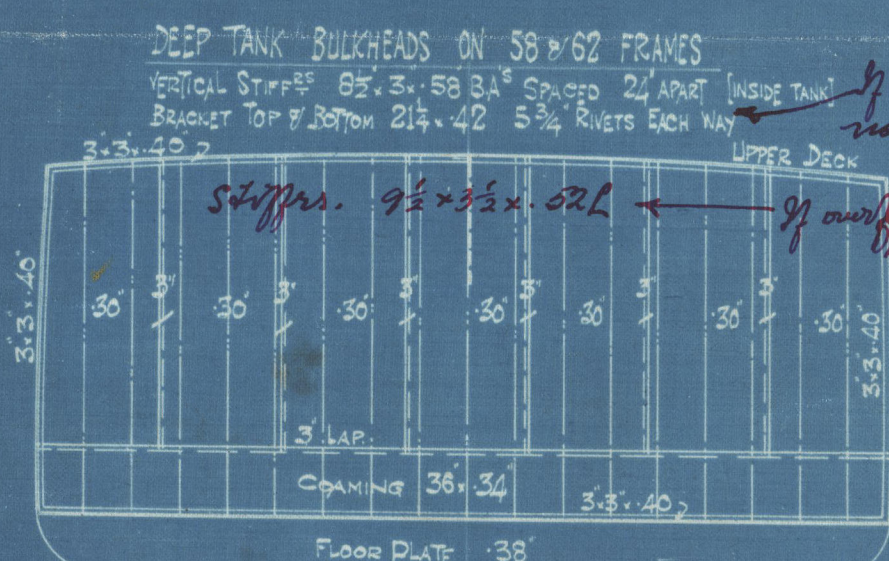
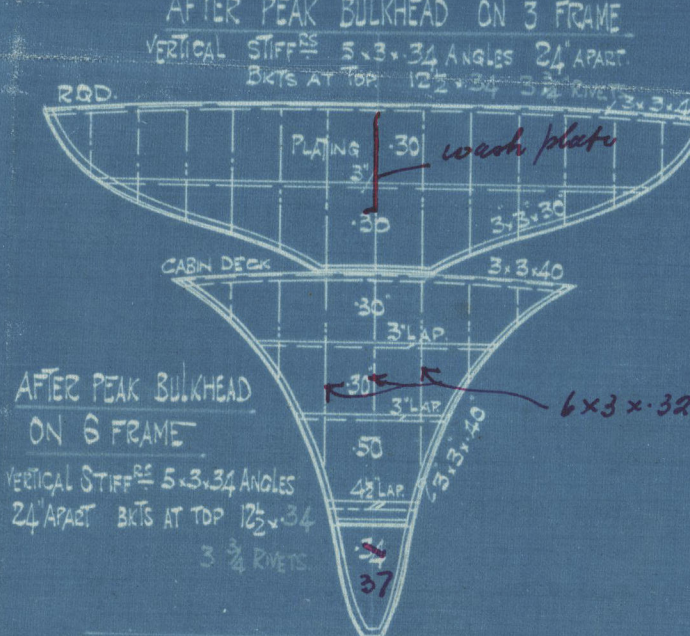
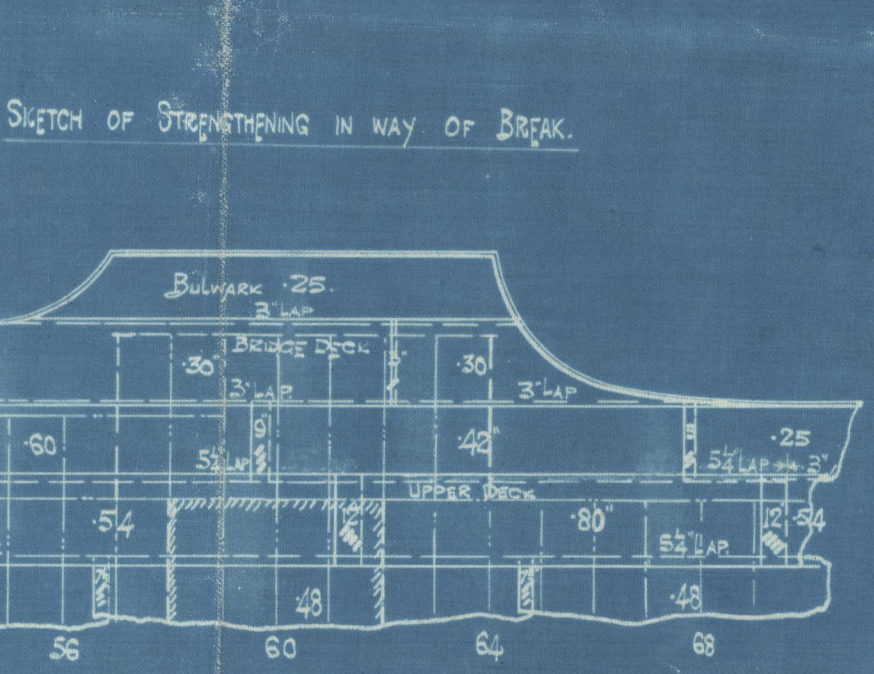
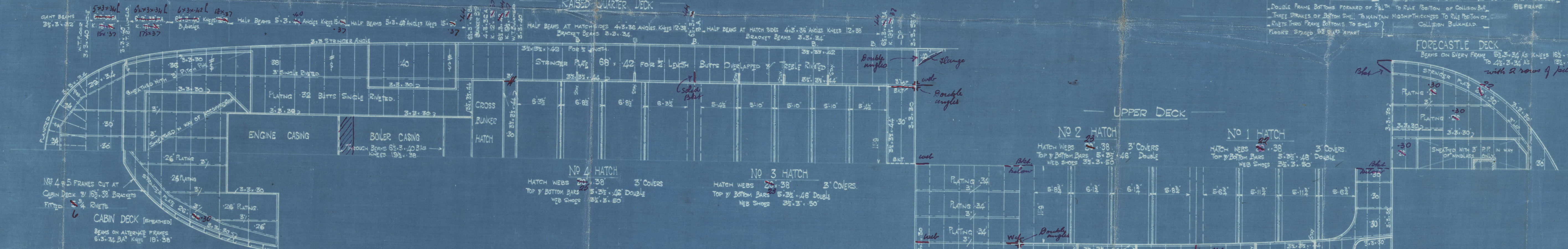
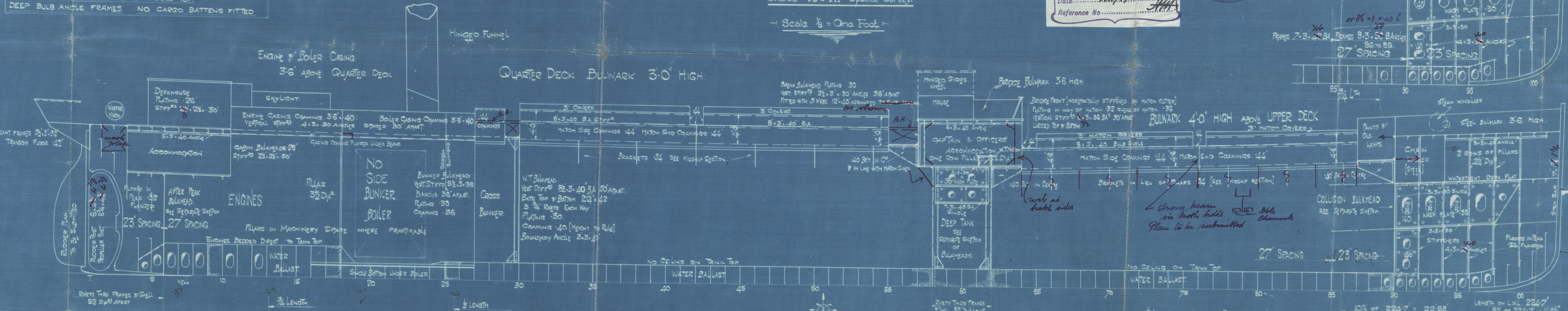
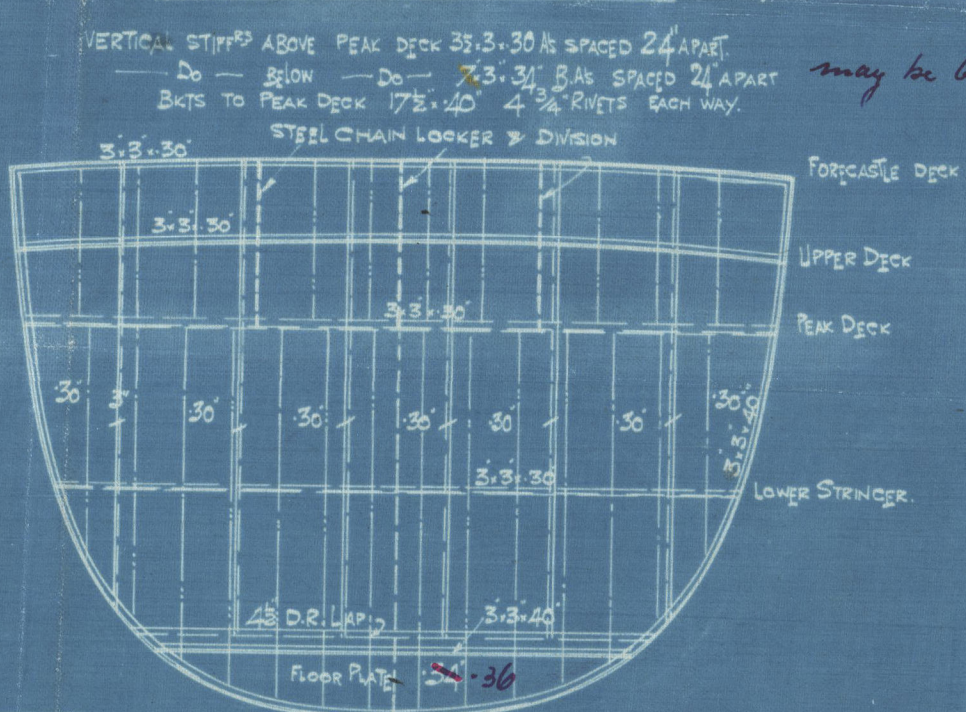
ALTERNATIVE ARRANGEMENT OF FORE-END



FOR FREEBOARD
FORECASTLE 23'7" x 3'0"

Windlass, winches, masts & steering gear
supported to Surveyor's satisfaction

COLLISION BULKHEAD ON 90 FRAME



W37-0114

Sundland.
S. P. Austin & Son.

N^{os} 309 & 10.

Profile & Decks.
309 = "S.S. FIREGLOW."

Std Rpt No. 29114.

310 = S.S. "HOME FIRE."

Std Rpt No. 29147.



© 2021

Lloyd's Register
Foundation

W37-0114