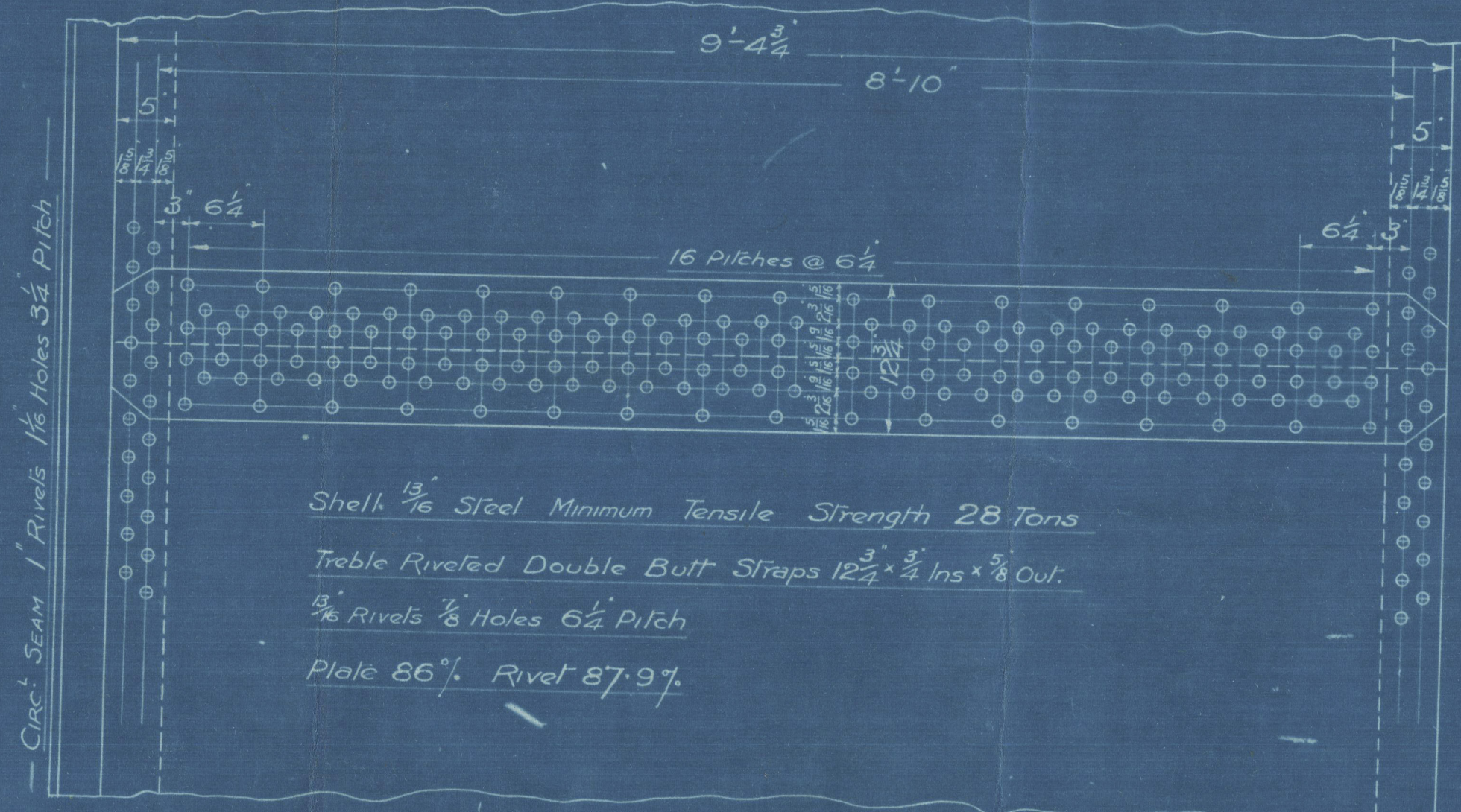
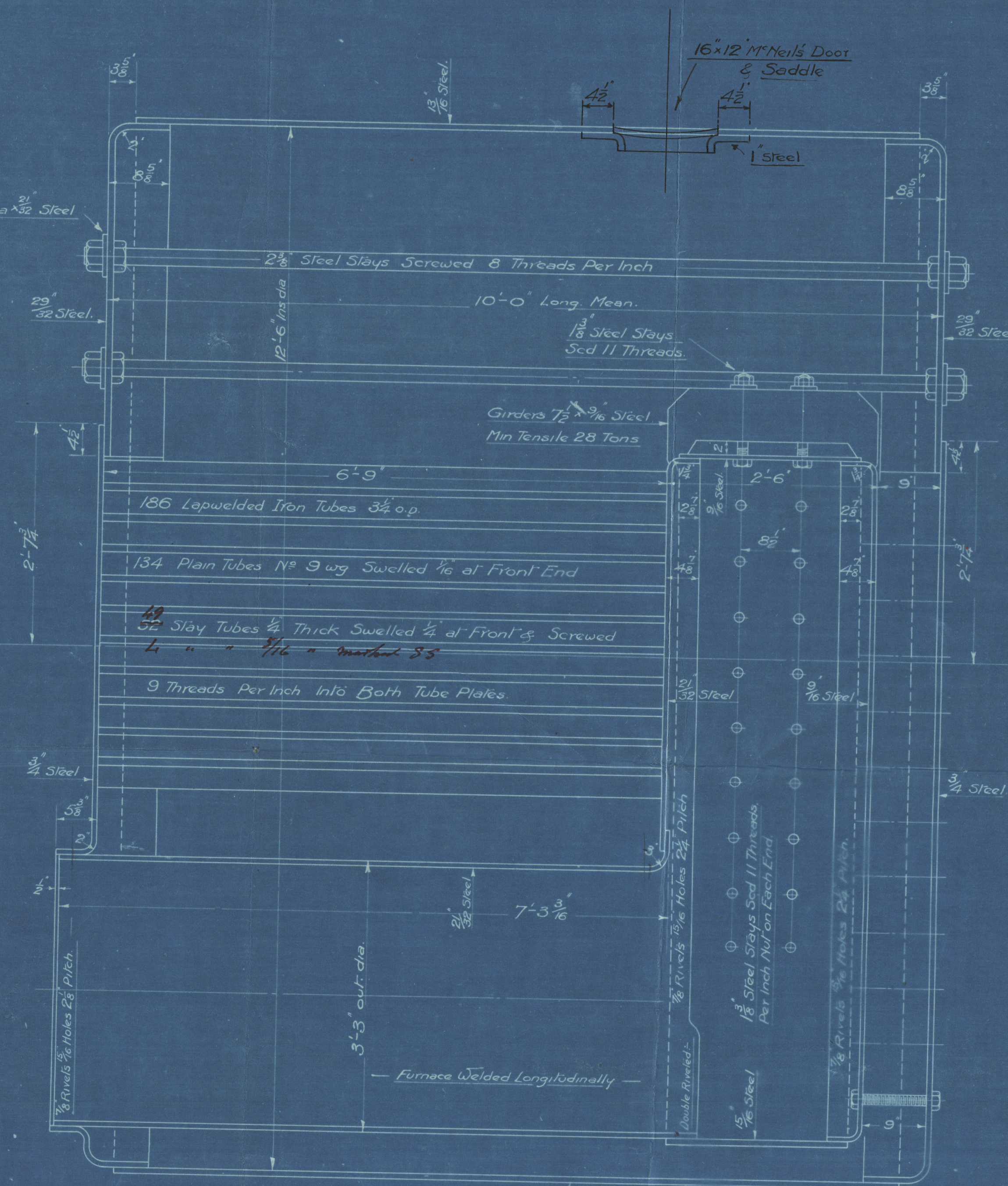
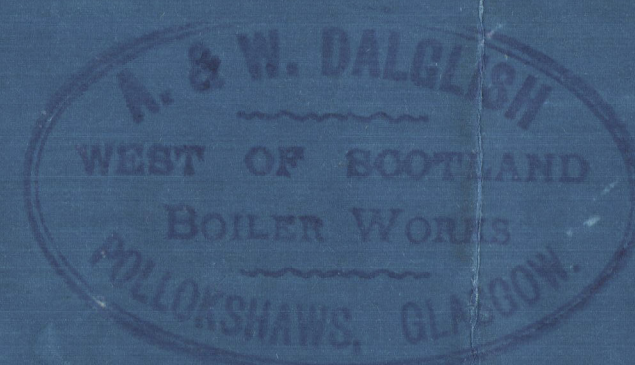


# MARINE BOILER

12'-6" DIA x 10'-0" LONG FOR 135 lbs WP

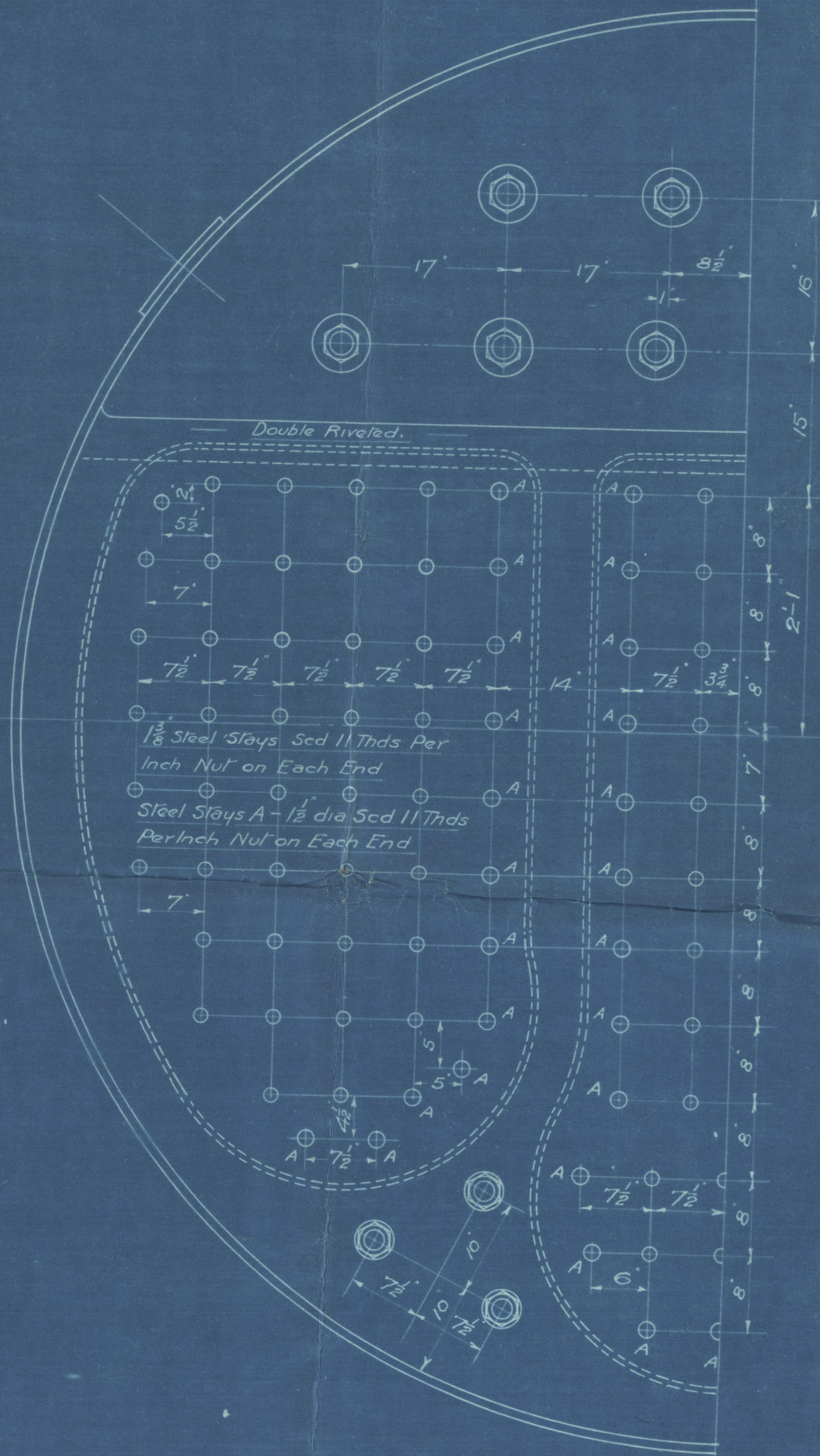
UNDER LLOYDS SURVEY

SCALE 1" = 1 FOOT



Shell 13/16" Steel Minimum Tensile Strength 28 Tons  
 Treble Riveted Double Built Straps 12 3/4" x 3/4" x 3/8" Out.  
 1/2" Rivets 1/8" Holes 6 1/2" Pitch  
 Plate 86% Rivet 87.9%

5/4/17



SURFACES	
Heating Surface In Tubes	1068 #
Furnaces	104 #
Chambers	138 #
Total	1370 #
Grafs Area 5'-0" Bors (n2 lengths)	47.1 #
Ratio GA to HS.	1:28.5 #
Area Thro Tubes	1254.0"

96.17  
 5.4 x 9.78

Nº 710



© 2021 Lloyd's Register Foundation



MARINE BOILER N<sup>o</sup> 710

12'-6" dia x 10'-0" Long.  
For 135 Ibs. W. P.  
to Lloyd's

FL

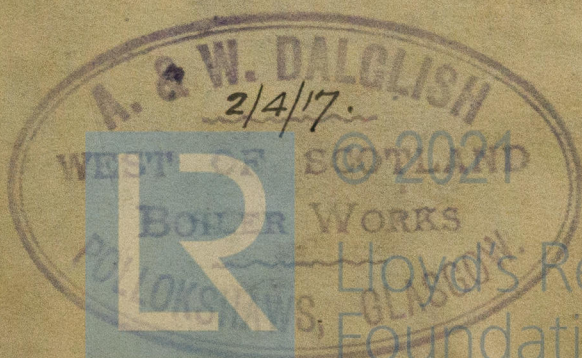
GLASGOW REPORT No. 37495.

"FALAYEE."

LTH. 15370



W37-015'3



Lloyd's Register  
Foundation