

JOB N° 570. S.S. "CADILLAC". MIDSHIP SECTION.

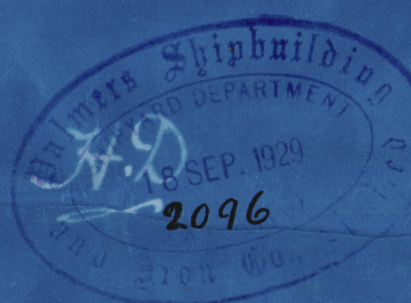
LENGTH 530'-0" x BREADTH EXT. 66'-6". DEPTH MLD 34'-0"

SCALE 1/2" = 1' 0"

ISHERWOOD SYSTEM (PATENT)

LLOYDS NUMERALS

BREADTH M-L 66.15
DEPTH M-L 34.00
100.15 TRANS N°
LENGTH B-P 530
53079.00 LONG. N°



L D TO SHELTER DE. 12.63

1" RIVETS

RIVETS SPACED 6 DIAS. APART

RIVETS SPACED 6 DIAS. APART

1" RIVETS

RIVETS SPACED 6 DIAS. APART

RIVETS SPACED 6 DIAS. APART

RIVETS SPACED 4 1/2 DIAS. APART

RIVETS SPACED 4 1/2 DIAS. APART

RIVETS SPACED 4 1/2 DIAS. APART

RIVETS SPACED 4 1/2 DIAS. APART

RIVETS SPACED 4 1/2 DIAS. APART

RIVETS SPACED 4 1/2 DIAS. APART

RIVETS SPACED 4 1/2 DIAS. APART

RIVETS SPACED 4 1/2 DIAS. APART

RIVETS SPACED 4 1/2 DIAS. APART

RIVETS SPACED 4 1/2 DIAS. APART

RIVETS SPACED 4 1/2 DIAS. APART

RIVETS SPACED 4 1/2 DIAS. APART

RIVETS SPACED 4 1/2 DIAS. APART

RIVETS SPACED 4 1/2 DIAS. APART

RIVETS SPACED 4 1/2 DIAS. APART

RIVETS SPACED 4 1/2 DIAS. APART

RIVETS SPACED 4 1/2 DIAS. APART

RIVETS SPACED 4 1/2 DIAS. APART

DOUBLE STRAPS, TREBLE RIV. WHERE OVER 1/2" THICKNESS TO TREBLE OVERLAPS AT ENDS
SHEERSTRAKE 104 TO 140
BUTTS DOUBLE STRAPPED & TREBLE RIVETED FOR 1/2" LGTH. TO TREBLE RIV. OVERLAPS AT ENDS
N° 1. 8x3 1/2 x .40 B.A.
OWNERS' REQUIREMENTS, SHEERSTRAKE TO BE INCREASED 7/16" IN THICKNESS FOR 9/16" LGTH
N° 2. 8x3 1/2 x .40 B.A.
8x3 1/2 x .40 IN VIEW OF WIDTH
BUTTS DOUBLE STRAPPED & TREBLE RIV. FOR 1/2" LGTH. TO TREBLE RIV. OVERLAPS
OWNERS' REQUIREMENTS, STRAKE BELOW SHEER TO BE INCREASED 7/16" FOR 9/16" LG. OF VESSEL
8x3 1/2 x .40 IN WAY OF OIL TO 4x4 x .40

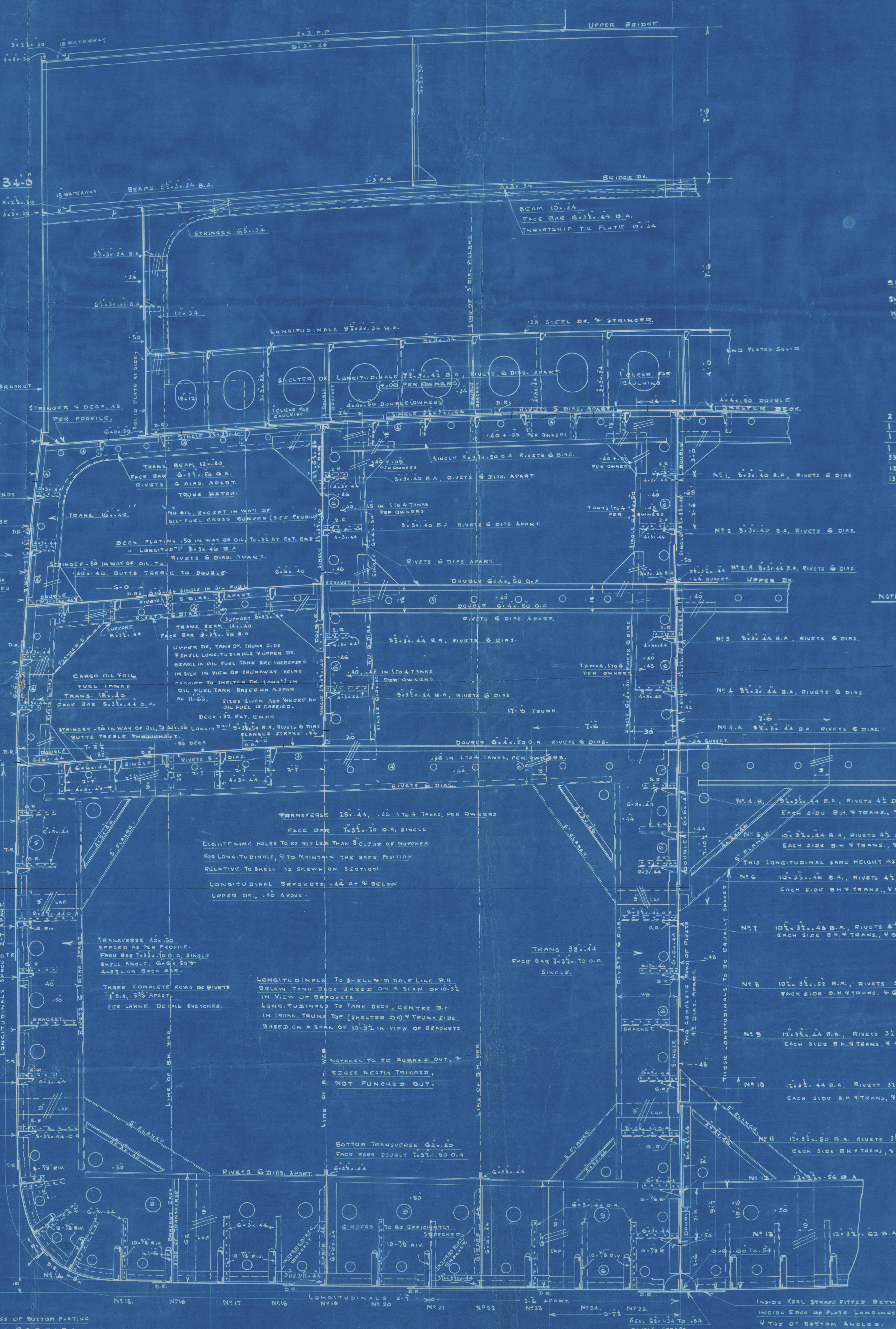
N° 3. 9x3 1/2 x .44 B.A.
N° 4. 9x3 1/2 x .44 B.A.
N° 5. 10x3 1/2 x .50 TO 10x3 1/2 x .40 B.A.
N° 6. 10x3 1/2 x .50 TO 10x3 1/2 x .50 B.A.
N° 7. 11x3 1/2 x .50 TO .40 B.A.
N° 8. 11x3 1/2 x .54 TO .50 B.A.
N° 9. 12x3 1/2 x .50 TO .40 B.A.
N° 10. 12x3 1/2 x .50 TO .52 B.A.
N° 11. 12x3 1/2 x .60 TO .62 B.A.
N° 12. 14x3 1/2 x .44 PLATE, 3x3 1/2 x .44 MOUNTS
N° 13. 16x4 x .44 PLATE, 3x3 1/2 x .44 MOUNTS
N° 14. 17x4 x .44 PLATE, 3x3 1/2 x .44 MOUNTS

TRANSVERSE 40x50
SPACED AS PER PROFILE.
FACE BAR 10x1 1/2 x .10 O.A. SINGLE
SHELL ANGLE, 6x4 x .50
4x3 1/2 x .44 B.A. B.A.

THREE COMPLETE ROWS OF RIVETS
1" DIA, 3/8" APART.
SEE LARGE DETAIL SKETCHES.

LONGITUDINALS N° 15 TO 25, RIVETS SPACED 3 1/2 DIAS. APART FOR 11 RIV. EACH SIDE B.H. 4 TRANS., 6 DIAS. ELSEWHERE.
LONGITUDINALS IN PLAT. OF FLOOR IN W.B. TANK FORM 7, 9 N° 1 OIL TANK. RIVETS SPACED 4 1/2 DIAS. THROUGHOUT
BOTTOM LONGITUDINALS 19x44 PLATE 7 1/2 x 3 1/2 x .44 MOUNTS, 7 3/4 x 3 1/2 x .44 B.A. BAR AT TRANSVERSE B.M.
BLISS KEEL FOR ABOUT 1/2 LGTH. B. BULB PLATE 12x100
T. BAR 8x3 1/2 x .50.

BOTTOM PLATING 1/4 TO 3/8. MIDSHIP THICKNESS OF BOTTOM PLATING ON PLAT. OF FLOOR MAINTAINED TO COLLISION B.H. B.C.D.E.F. STRAKES TO BE INCREASED 1/8" (OWNERS' EXTRA) OVER TANKS 3 TO 11.
BUTTS DOUBLE STRAPS, TREBLE RIVETED, FOR 3/4 LG. TO TREBLE OVERLAPS AT ENDS
INSIDE STRAPS STOPPED AT LONGITUDINALS.



EQUIPMENT NUMBER

SECOND NUMBER	53079
SHELTER DK.	530 x 6 x 3
HOUSE APT.	79 x 7.5
BRIDGE	25 x 11.5
EQUIPMENT N°	56699

EQUIPMENT

2 BOWER ANCHORS, STOCKLESS	95 CWTs + 10% = 104 1/2 CWTs, AS SPECIFIED
1 " " EX. STOCK (TROTMAN)	65 " + 10% = 71 1/2 " " " "
1 STREAM " " (ROBBERS)	28 " " " " " " " "
1 KEDGE " " " " " "	14 " " " " " " " "
330 FATHOMS STUD CHAIN CABLE	2 1/2 " " " " " " " "
120 " STREAM STEEL WIRE FLEXIBLE 6 DIAS.	" " " " " " " "
130 " TOWLINE " " " " " "	" " " " " " " "
2 @ 100 FATHOMS 2 1/2 FLEXIBLE WIRE HAWSER ON REELS	" " " " " " " "
2 @ 100 " 8 MANILLA, HAWSER LAID.	" " " " " " " "

NOTE: ALL SECTIONS TO BE TO NEWEST BRITISH STANDARD SECTION.



W370-0048 212

FOR ENCLOSURE TO

Lloyd's London

From

PALMERS S. & I. CO., Ltd.,

Shipyard Department,

JARROW-ON-TYNE.

St. Cadillac. New report No 8555

Midship Section

RETAIN

W370 - 0048 1/2



© 2021

Lloyd's Register
Foundation