





# TENSILE STRENGTH OF MATERIALS.

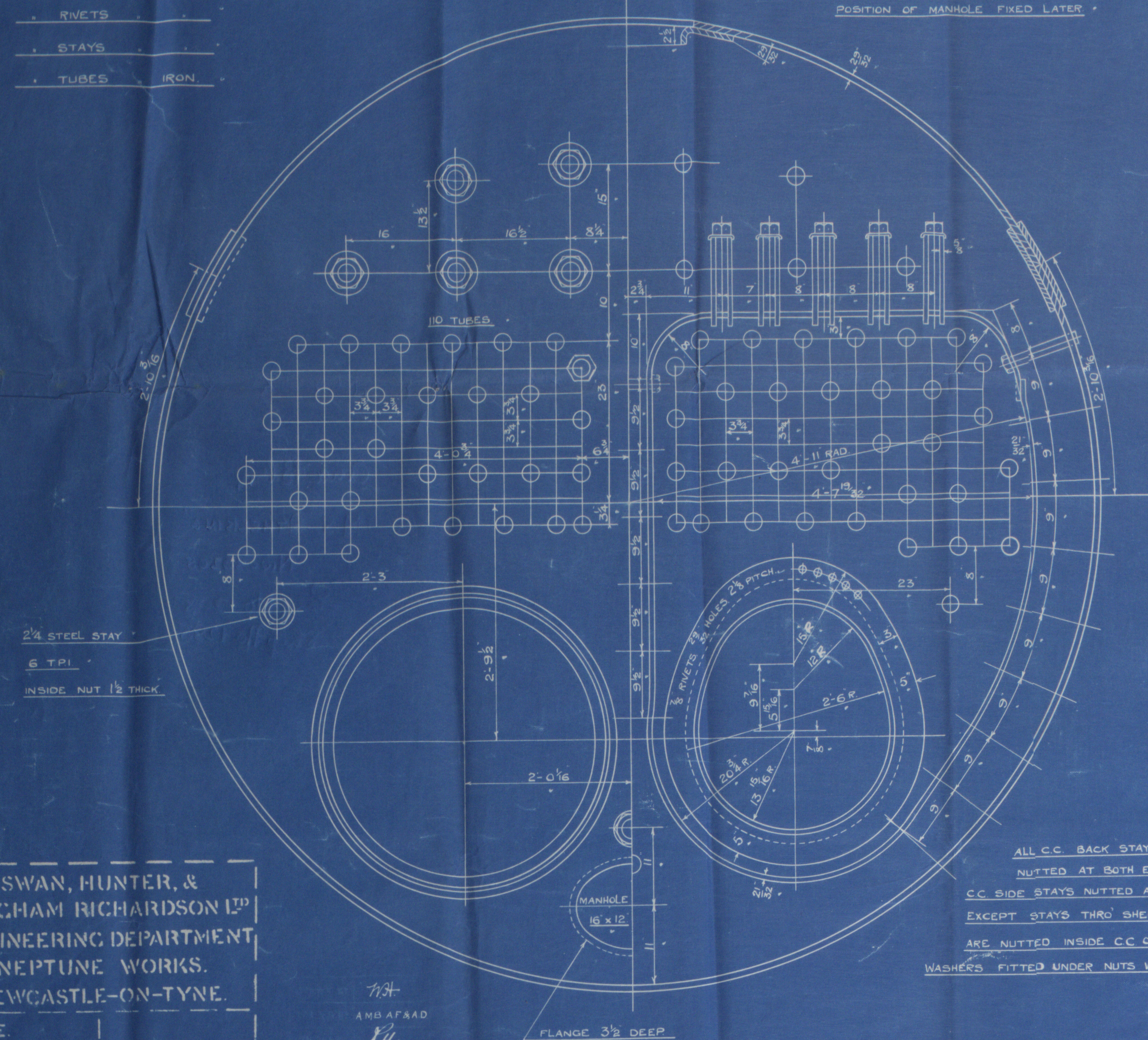
CYL. SHELL & BUTT STRAPS	30 TO 34 TONS/D.
GIRDER PLATES	25 - 32
MANHOLE DOUBLING	27 - 30
ALL OTHER PLATES & FURNACES	26 - 30
LONG. STEEL STAYS	28 - 32
SCREW STAYS & RIVET BARS	26 - 30

WORKING PRESSURE 180 LBS/D.

TEST 320

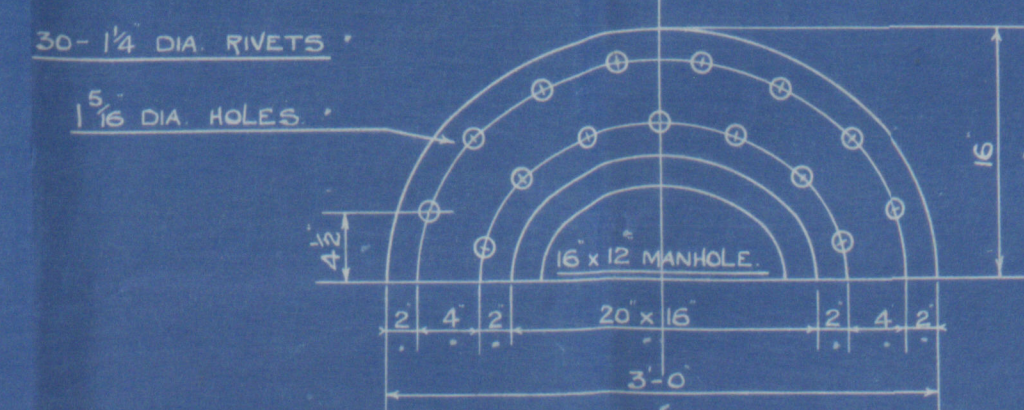
ALL PLATES OF STEEL.

- RIVETS
- STAYS
- TUBES IRON.



ALL C.C. BACK STAYS  
NUTTED AT BOTH ENDS.  
C.C. SIDE STAYS NUTTED AT BOTH ENDS  
EXCEPT STAYS THRO' SHELL WHICH  
ARE NUTTED INSIDE C.C. ONLY.  
WASHERS FITTED UNDER NUTS WHERE NECESSARY.

CIRC. JOINT 1 RIVETS, 1 1/2 HOLES, 3 1/2 PITCH (123 PITCHES)  
PLATE = 65.64% RIVETS = 42.8%



POSITION OF MANHOLE FIXED LATER

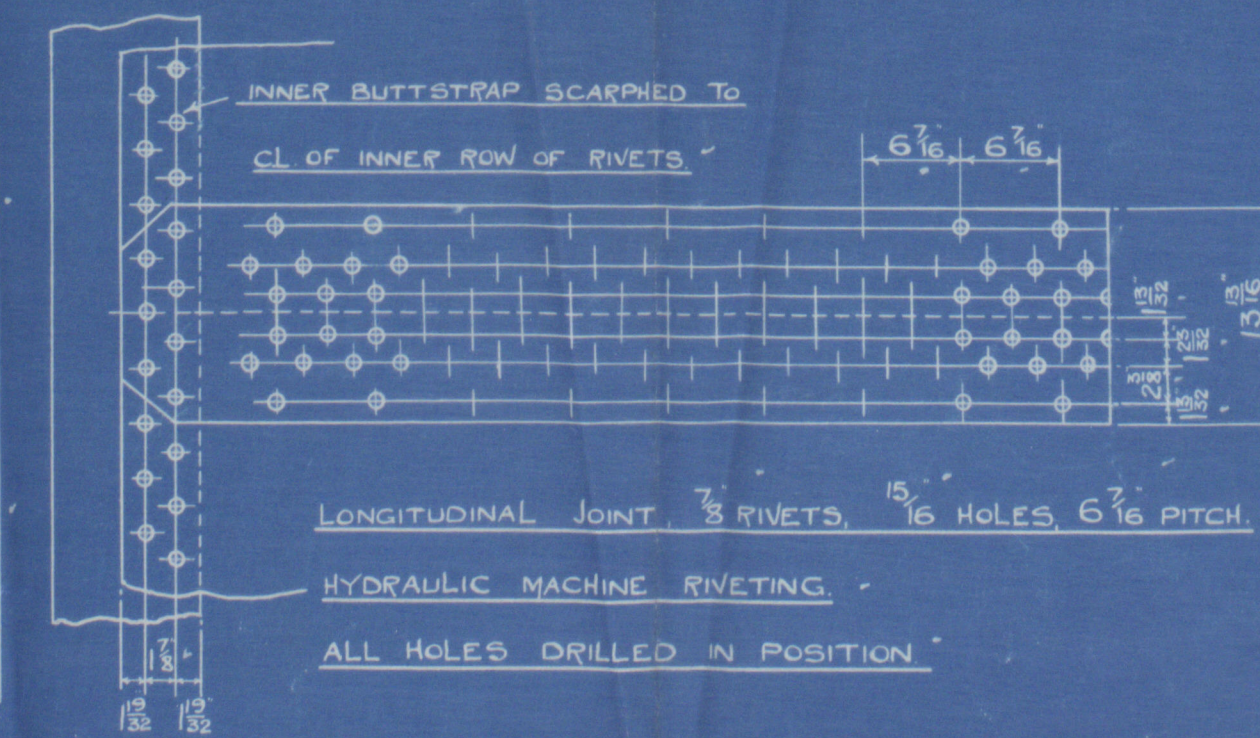


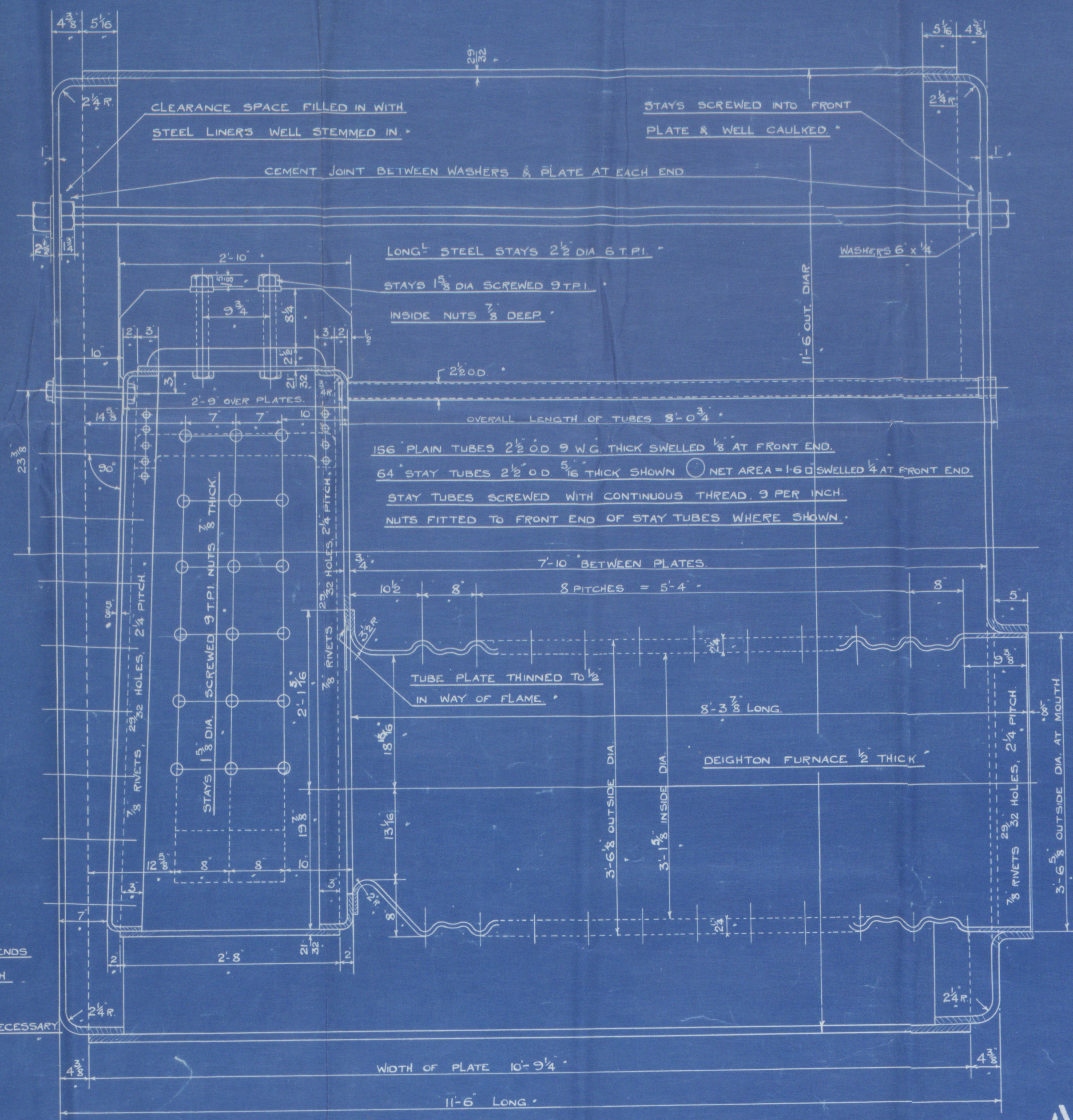
PLATE = 85.43%

RIVET = 85.04%

COMBINED = 87.83%

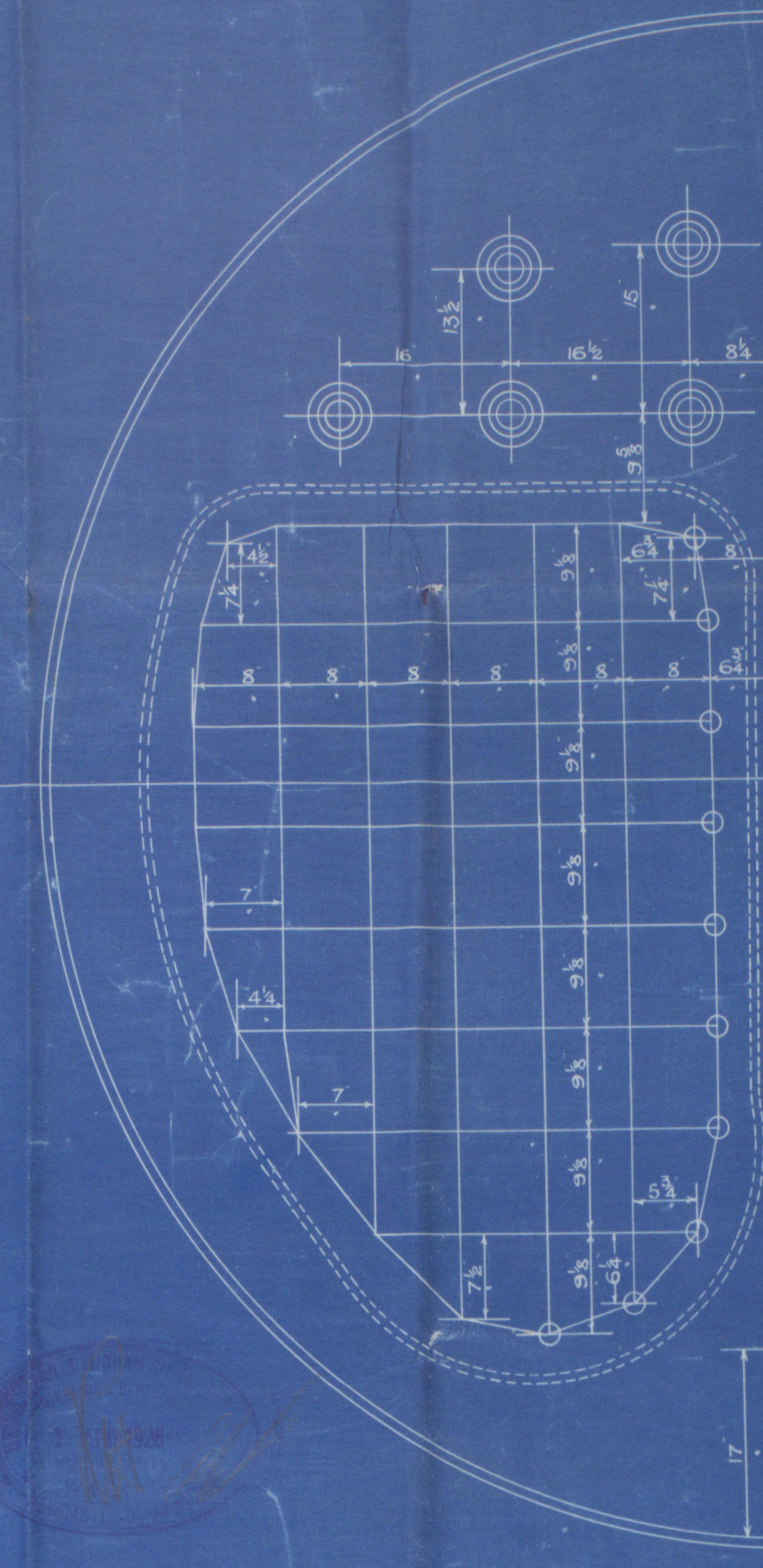
INNER BUTT STRAPS 1 3/16 THICK

OUTER 1 1/16



1380  
TOTAL HEATING SURFACE = 1433 S.F.

TO LLOYDS SURVEY



BACK STAYS MARKED THIS ○  
ARE 1 3/8 DIA NUTS 3/8 THICK.  
REMAINDER ARE 1 1/8 DIA NUTS 3/8 THICK  
ALL SCREWED 9 T.P.I.

STEEL STAY 2 1/2 DIA 6 T.P.I.  
INSIDE NUT 1 1/4 DEEP.

I-OFF

AUXILIARY BOILER.

SCALE 1" = 1 FOOT

For enclosure to  
Date 1/4/26  
ENCLOSURE NO. 890  
From  
By  
SWAN, HUNTER, & WIGHAM RICHARDSON, LTD.,  
NEPTUNE WORKS, WALKER.

No. 1208  
DATE 24.7.25

B.484.



✓ aux Bbr. ✓

M.S. "ATHELKING"

Nwe80205

Eng No 1208

Ship No 1285

RETAIN

RETAIN



© 2020

Lloyd's Register  
Foundation

W375-0234

For enclosure to

Date

2020/1/26



From

Please return to SWAN, HUNTER, & WIGHAM RICHARDSON, LTD.,  
Neptune Works, WALKER.

2/2