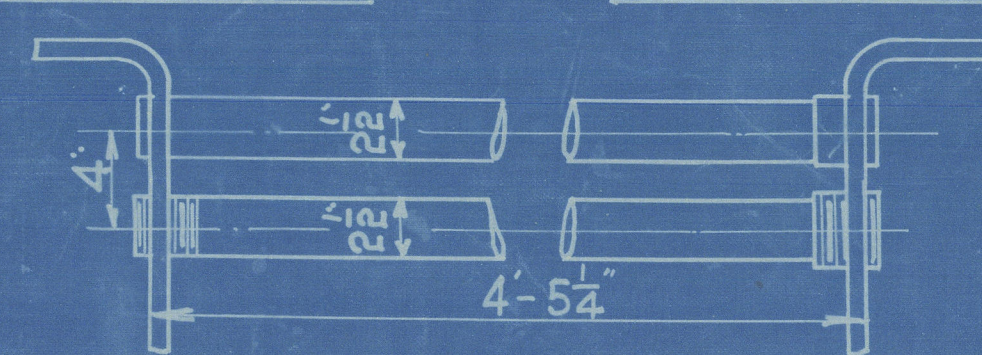


COCHRAN PATENT VERTICAL MULTITUBULAR BOILER

HORIZONTAL FLUE TUBES.

PLAIN TUBE HOLES $2\frac{1}{2}$ " DIA.
IN BACK TUBE PLATE.

PLAIN TUBE HOLES $2\frac{3}{8}$ " DIA.
IN FRONT TUBE PLATE.



STAY TUBE HOLES SCREWED.
 $2\frac{1}{2}$ " DIA. 11-THREADS PER INCH
IN BACK TUBE PLATE.

STAY TUBE HOLES SCREWED.
 $2\frac{3}{8}$ " DIA. 11-THREADS PER INCH
IN FRONT TUBE PLATE.

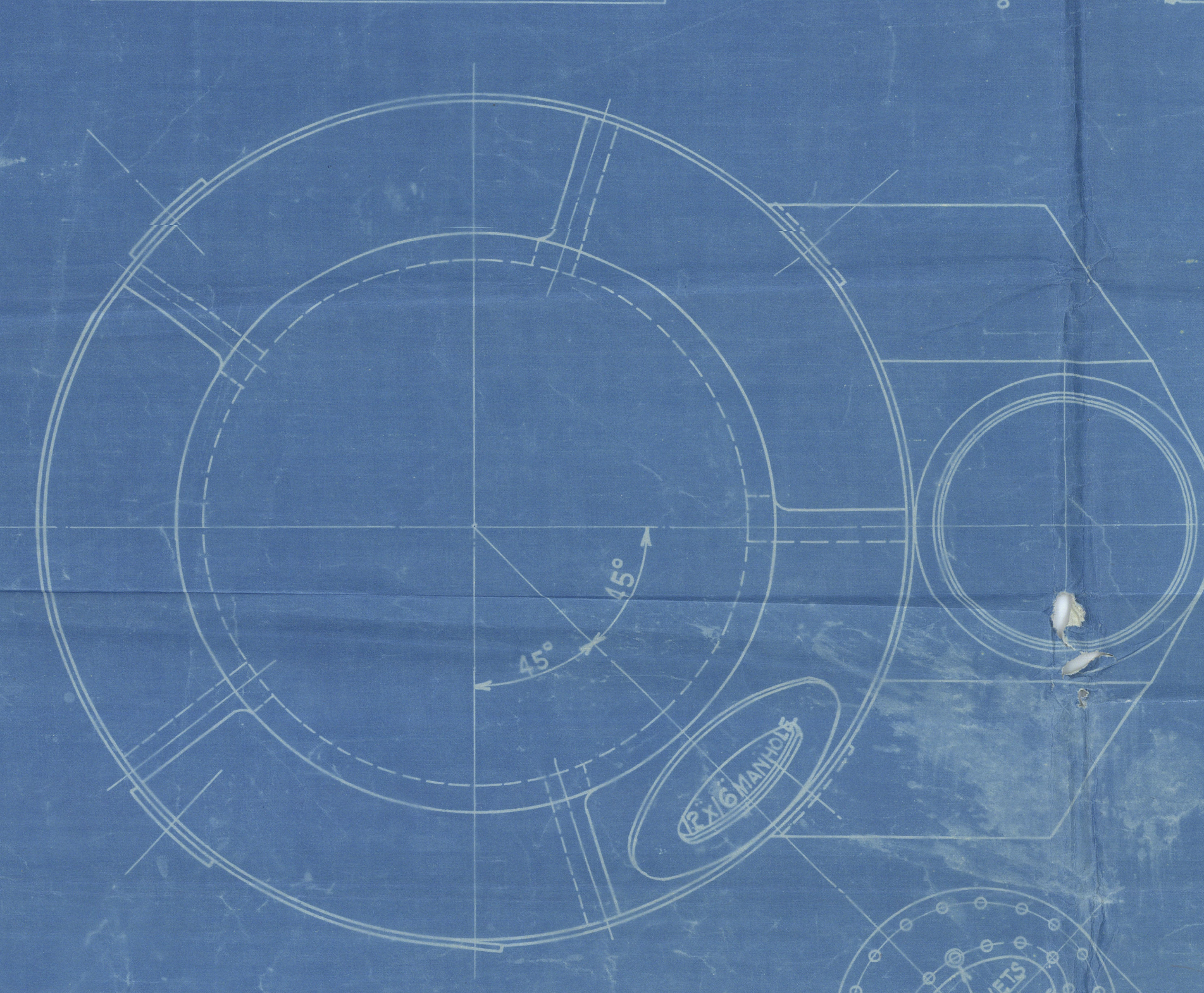
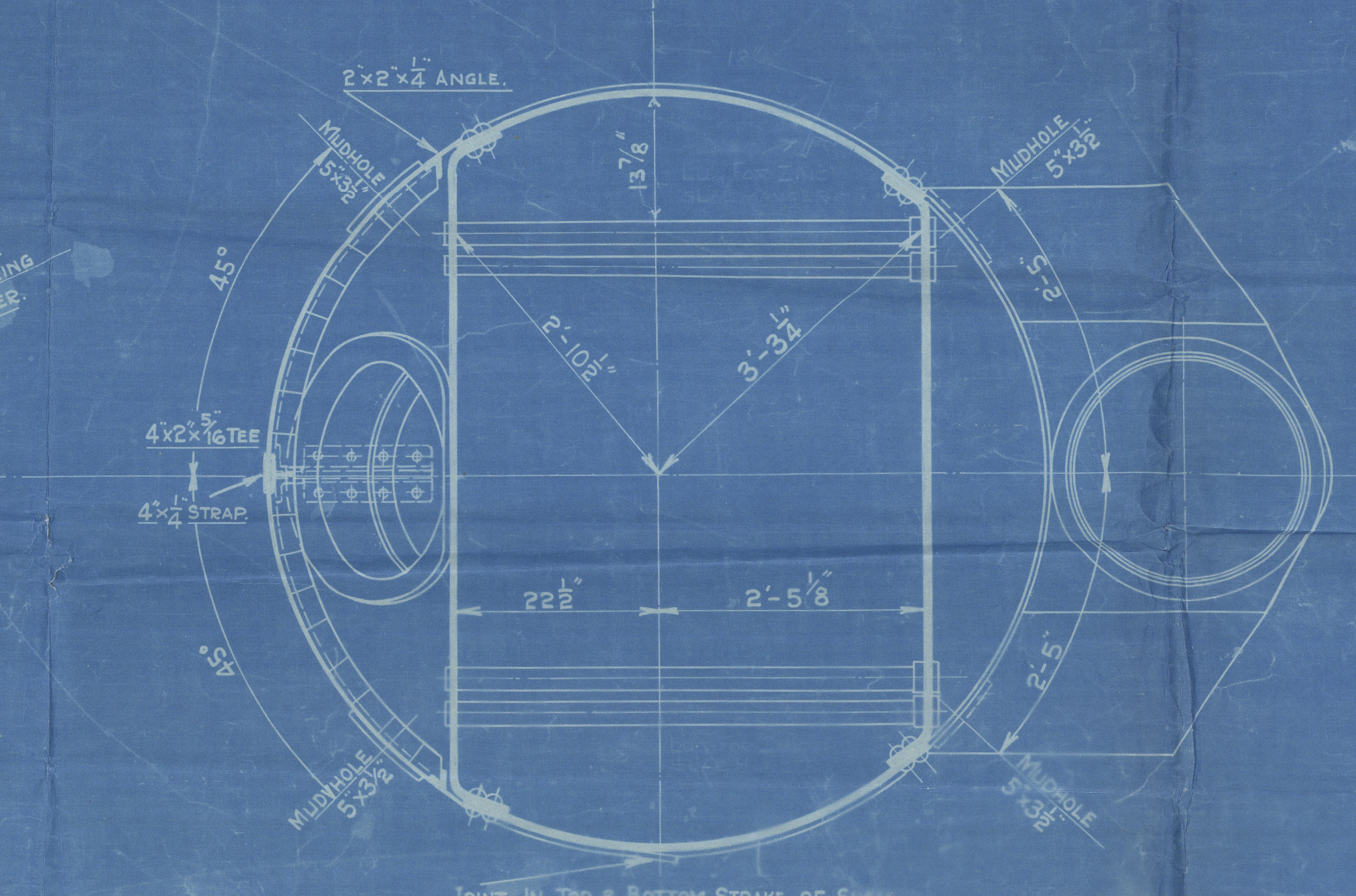
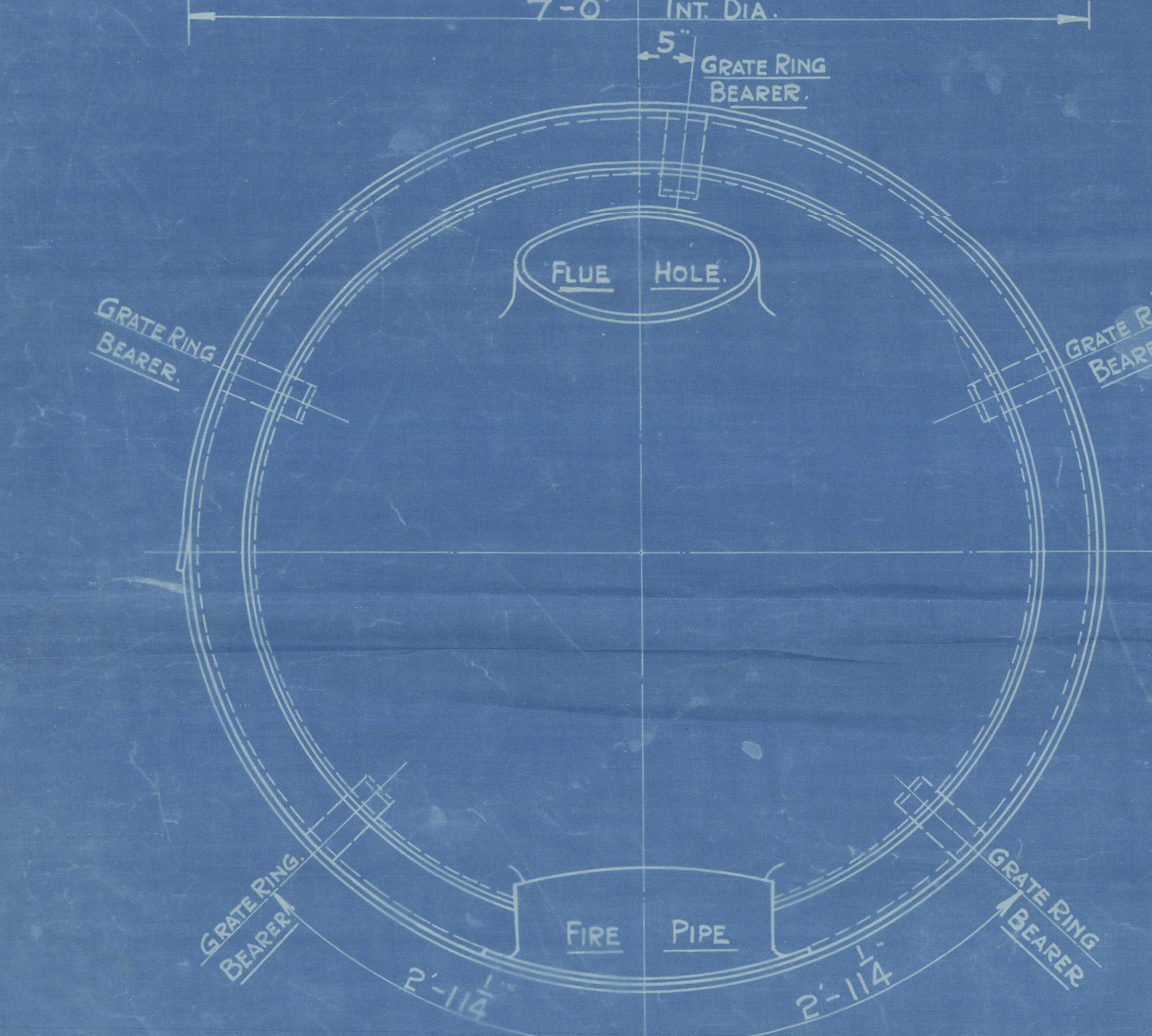
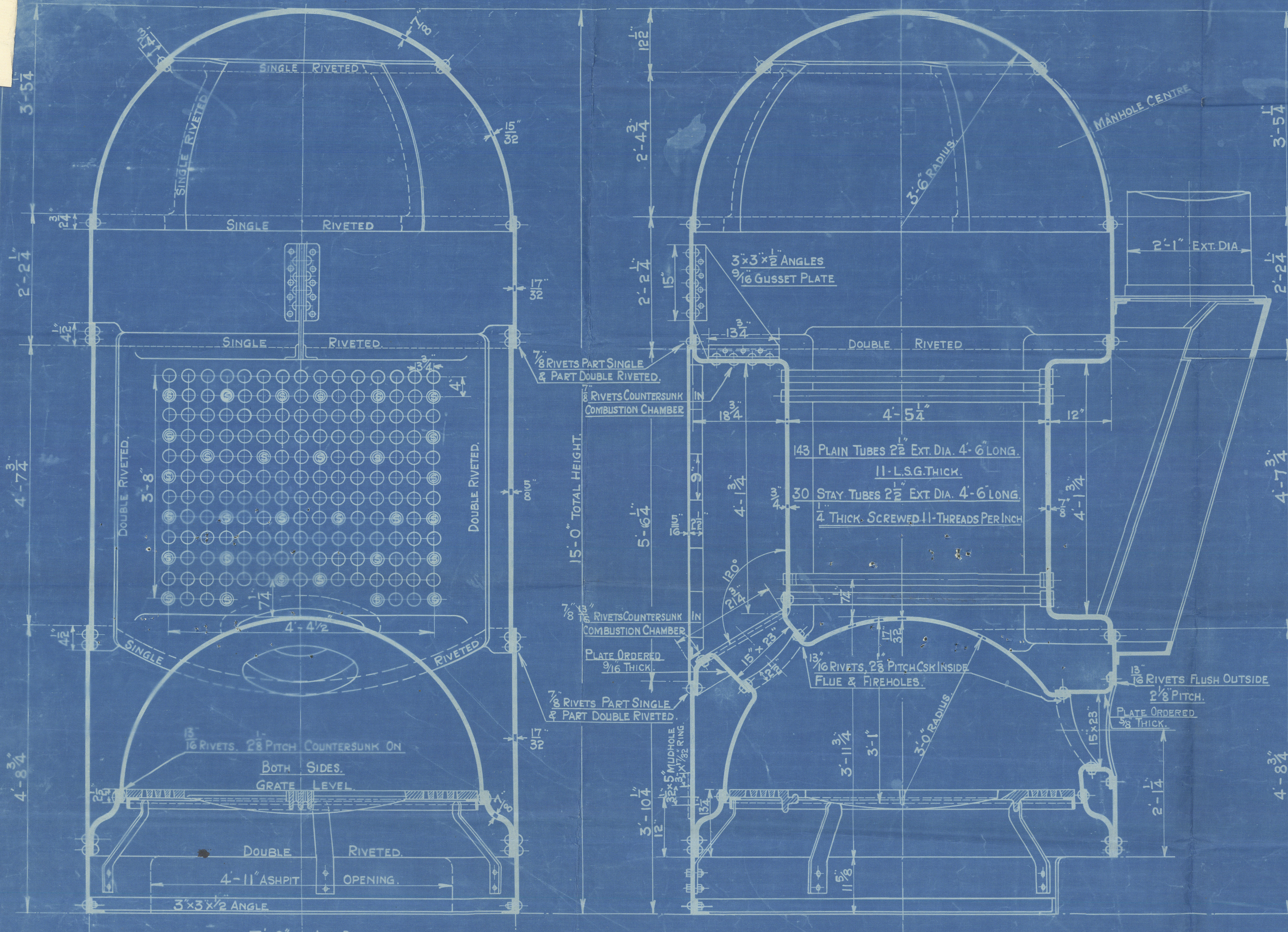
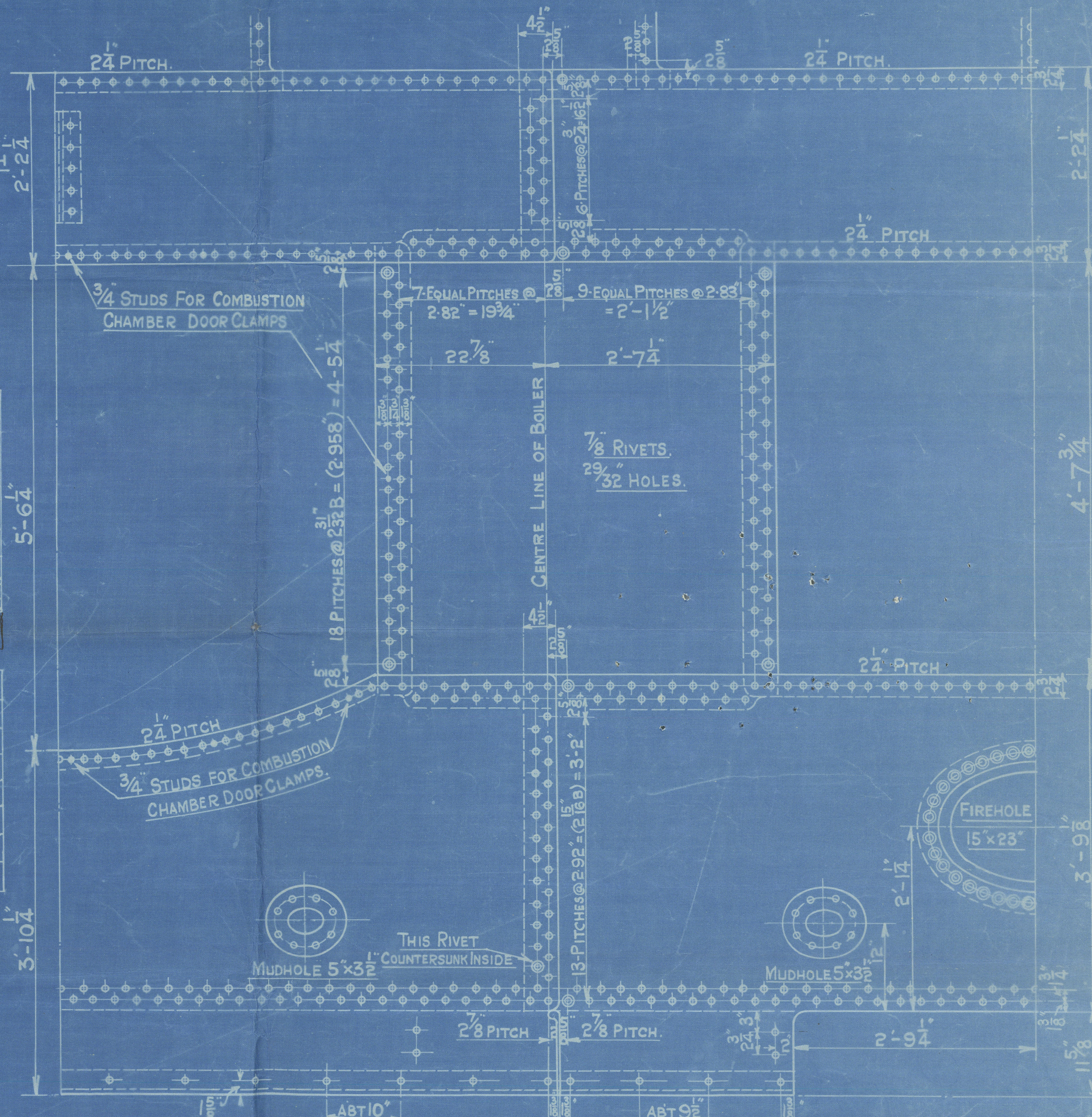
SCALE $\frac{1}{2}$ " = 1 FOOT.

HEATING SURFACE	
TUBES	4879 Sq. Ft.
PLATE	113.9 Sq. Ft.
TOTAL	6005 Sq. Ft.
GRATE AREA	2675 Sq. Ft.

LLOYDS.	
PLATE	$2\frac{1}{2}$ " x 28" x 100" = 67%
RIVETS	$2\frac{1}{2}$ " x 645 x 85 = 70.6%
FRONT TUBE PLATE	$4\frac{1}{2}$ " x 100" = 35.1%
BACK TUBE PLATE	$4\frac{1}{2}$ " x 100" = 37.5%
SHELL	$20\frac{1}{2}$ " x 15' x 21" = 106.2 LBS.
FRONT TUBE PLATE	$20\frac{1}{2}$ " x 15' x 21" x 26" = 102.6 LBS.
BACK TUBE PLATE	$20\frac{1}{2}$ " x 15' x 21" x 26" = 103.4 LBS.
FURNACE	$1250\frac{1}{2}$ " x 15' x 21" = 112.8 LBS.
GRATE RING	$5\frac{1}{2}$ " x 14" x 14" (14-72) = 100 LBS.

BOARD OF TRADE	
PLATE	$2\frac{1}{2}$ " x 28" x 100" = 67%
RIVETS	$2\frac{1}{2}$ " x 645 x 85 x 100" = 74.5%
FRONT TUBE PLATE	$4\frac{1}{2}$ " x 100" = 35.1%
BACK TUBE PLATE	$4\frac{1}{2}$ " x 100" = 37.5%
SHELL	$28\frac{1}{2}$ " x 240" x 67" x 2 x 53125 = 108.1 LBS.
FRONT TUBE PLATE	$28\frac{1}{2}$ " x 240" x 51" x 475 = 136 LBS.
BACK TUBE PLATE	$28\frac{1}{2}$ " x 240" x 51" x 475 = 161 LBS.
FURNACE	$14000\frac{1}{2}$ x 17" = 103 LBS.

BUREAU VERITAS	
PLATE	$67\frac{1}{2}$ " x 28" x 240" x 53125-04 = 122.8 LBS.
RIVETS	$2\frac{1}{2}$ " x 645 x 85 x 5 = 132 LBS.
FRONT TUBE PLATE	$10400\frac{1}{2}$ x 875 (4-2-5937) = 123.9 LBS.
BACK TUBE PLATE	$10400\frac{1}{2}$ x 75 (4-2-5) = 113.1 LBS.
FURNACE	$25\frac{1}{2}$ " x 18" x 24" = 108 LBS.



Approved 19.4.13.
PATENT BOILER N° 8059
7'-0" x 15'-0" x 600# x 100 LBS.

SCALE 1 INCH TO 1 FOOT

SIEMENS MARTIN MILD STEEL PLATES.

TENSILE TESTS

PLATES NOT EXPOSED TO FLAME OR FLANGED. 28 TO 32 TONS.
PLATES EXPOSED TO FLAME OR FLANGED EXCEPT FURNACE CROWN. 26 TO 30 TONS.
FURNACE CROWN 26 TO 28 TONS.

STANDARD
SURVEY-LLOYDS

COCHRAN & CO ANNAN L^{rs}
ENGINEERS & BOILER MAKERS
ANNAN, SCOTLAND

DRAWING L^{rs}
Lloyd's Register
Foundation

COCHRAN & CO., ANNAN, Ltd.

Enclosure

FOR

Messrs

Lloyd's

Register
Foundation

2/2
W382-0188

RETAIN

CROFTON & CO., ANNAN, LE.

No. 8059.

Drawings No. 9696.

100 lbs per square inch

Mark on boiler:-

No 14844
LLOYD'S TEST.
200 lbs
H.P. 100 lbs
P.M.C. 8/8/19.

Got 4321
Boiler
ex. 14844

GLASGOW REPORT No.

39011

RETAIN

RETAIN

© 2021



Lloyd's Register
Foundation