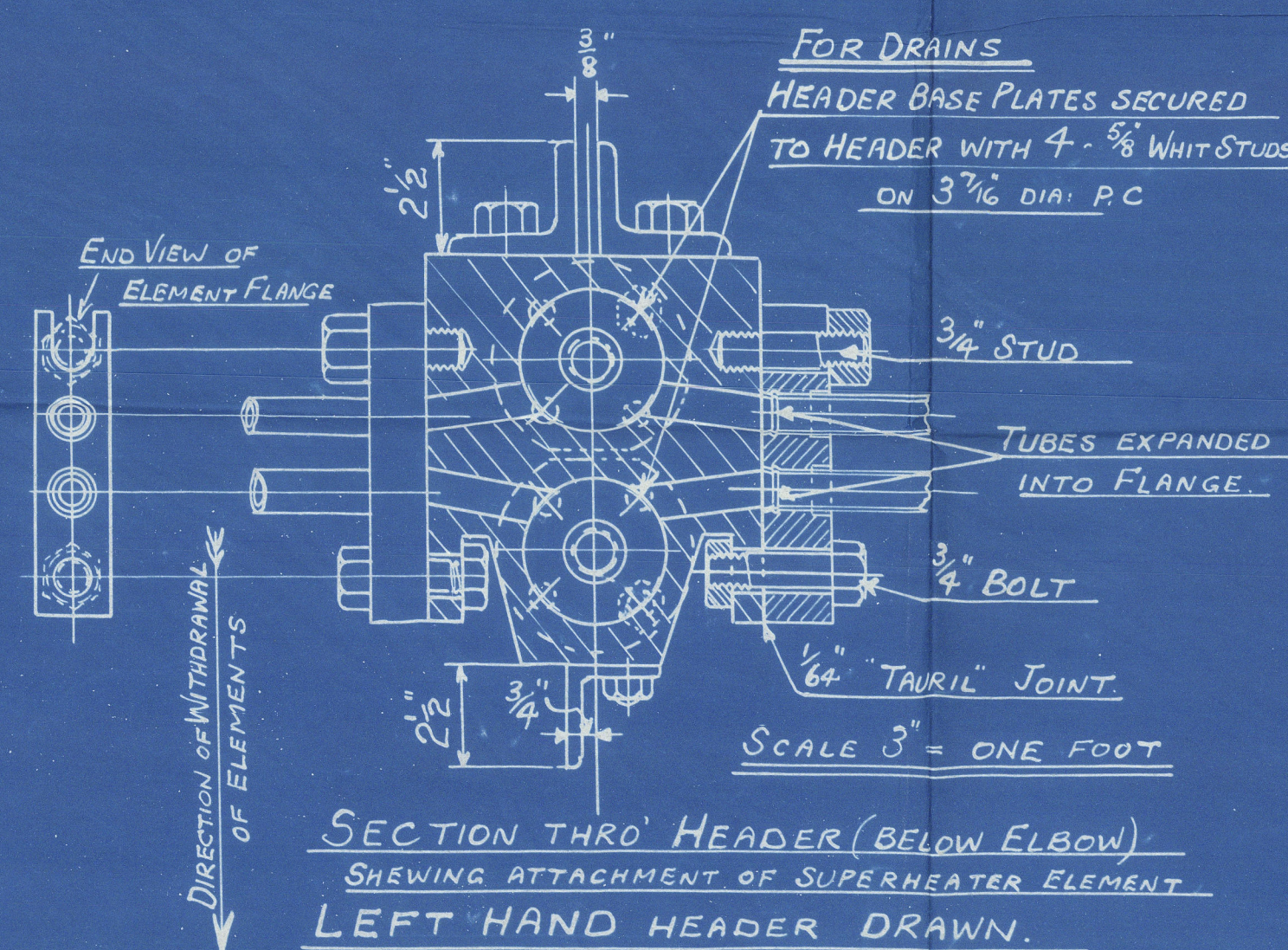
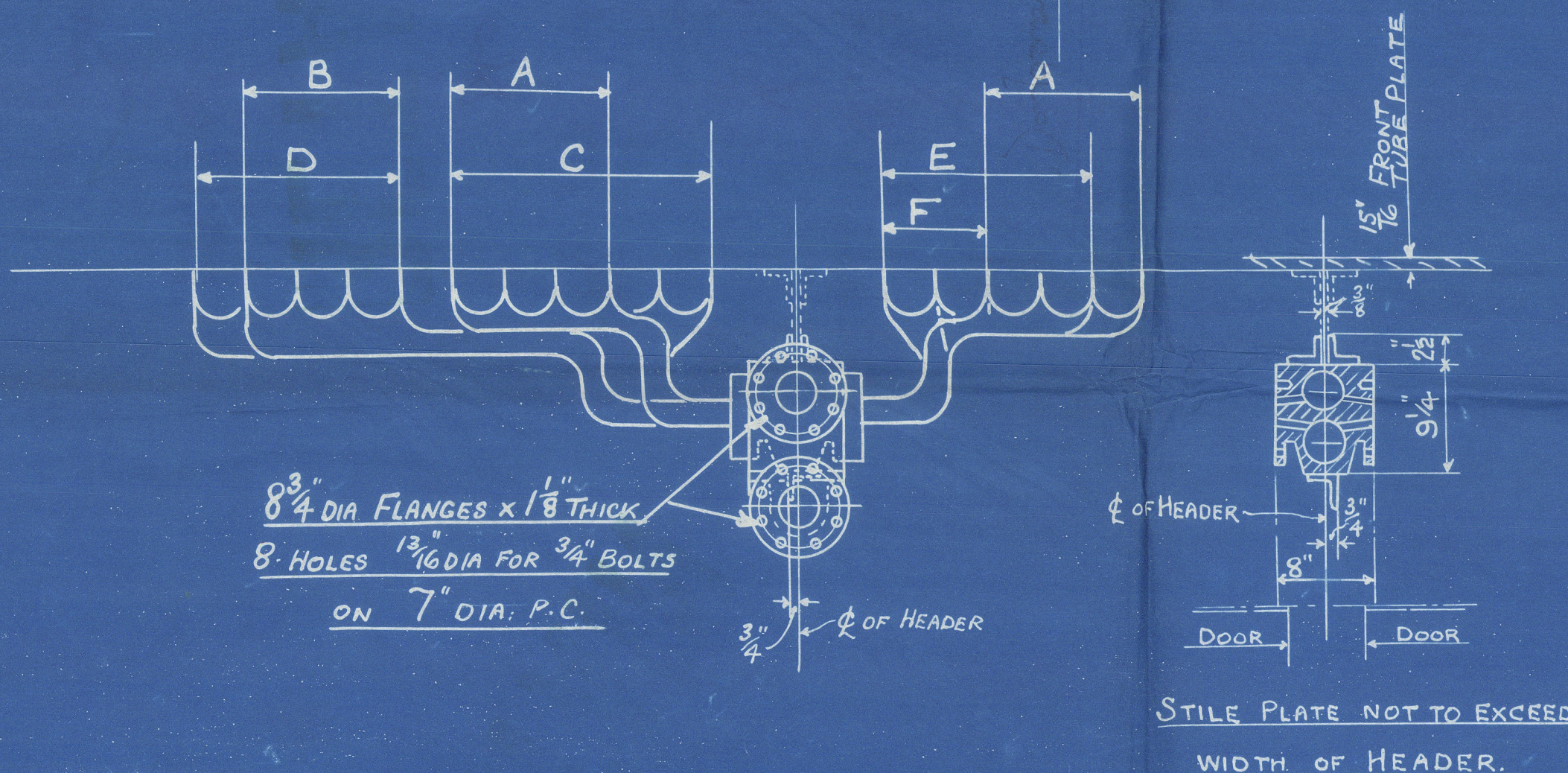
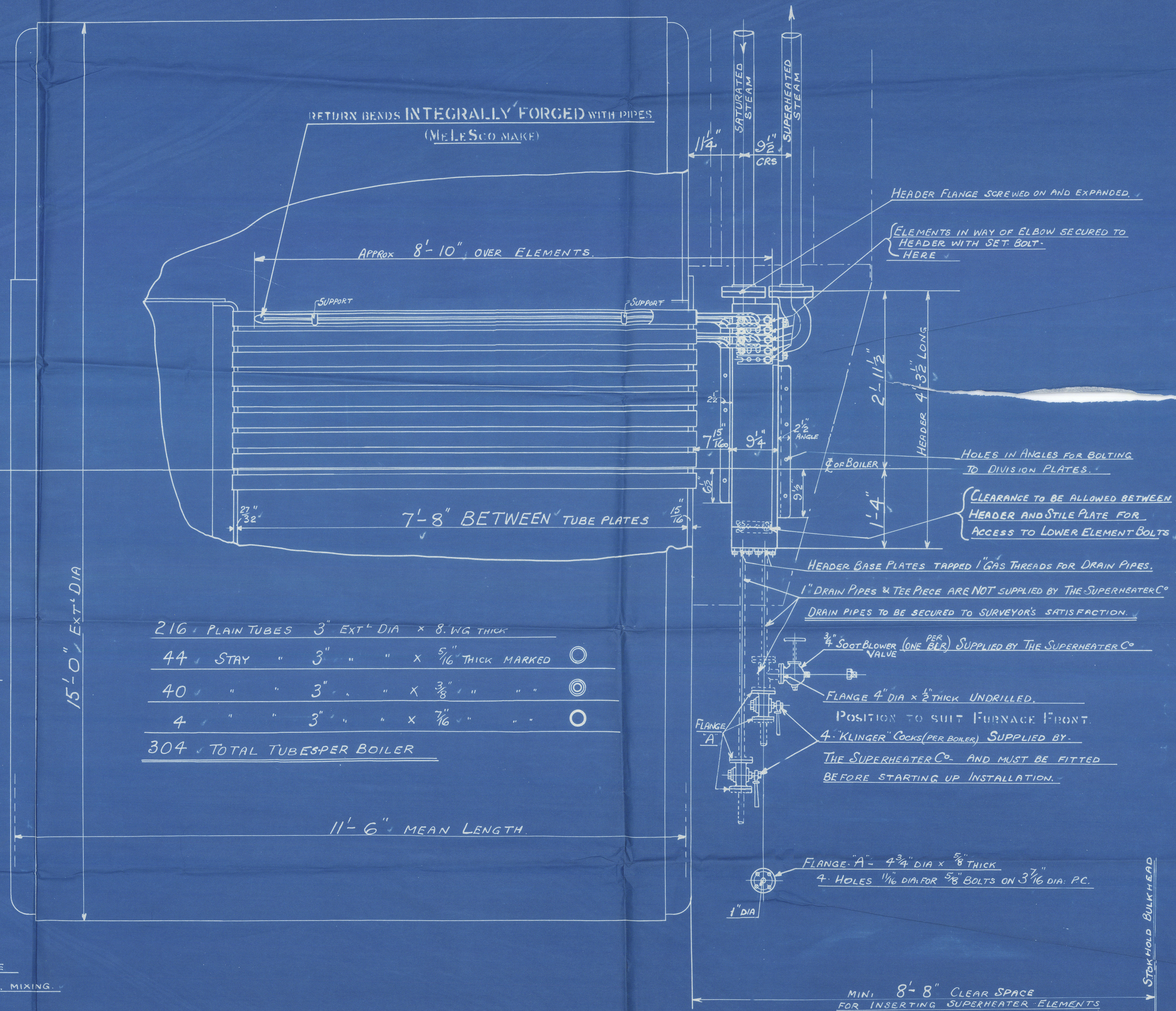
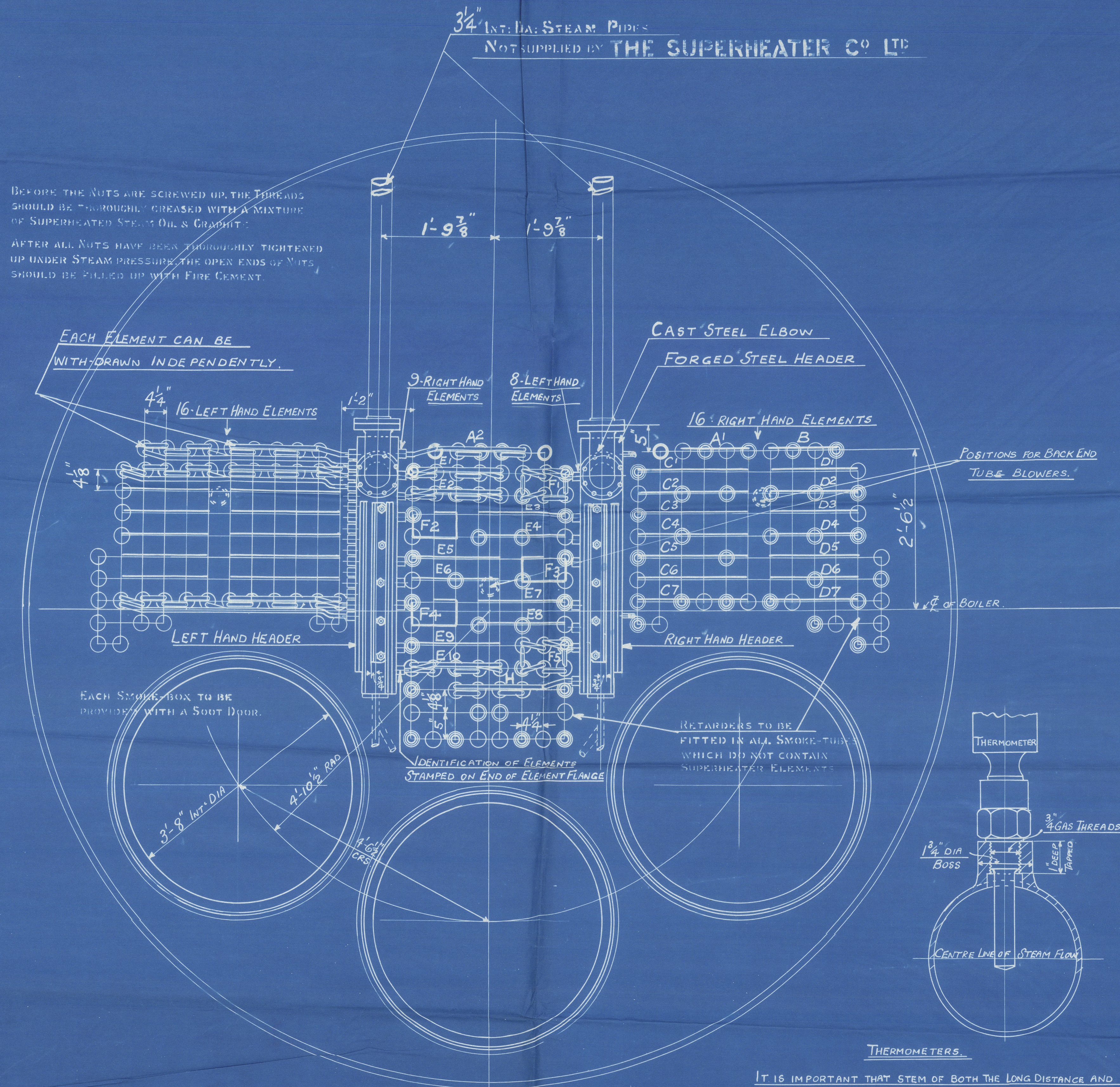


REVISION	REMARKS
A	2/10/39 KLINGER COCKS TO HAVE PIPES ELONGATED 4 1/2" DIA - AT EACH END (CLIENT REQUEST)



NUMBER OF BOILERS 2 PER SHIP (COAL FIRED - FORCED DRAUGHT.)  
WORKING PRESSURE = 220 LBS PER SQ. IN.  
GRATE AREA = 55 sq. ft. = 110 sq. ft. PER SHIP  
HEATING SURFACE = 2325 sq. ft. = 4650 sq. ft. PER SHIP

TO PASS LLOYDS SURVEY  
TEST PRESSURE 660 LBS PER SQ. IN.

THE DESIGN SHOWN ON THIS DRAWING IS PROTECTED BY PATENTS OWNED AND CONTROLLED BY THE SUPERHEATER CO. LTD BUSH HOUSE LONDON W.C.2

TITLE ARRANGEMENT OF SUPERHEATER "R.B.-TYPE"

REF. CHD. DRAWING NO. MN12420A

RICHARDSONS, WESTGARTH & CO. LTD.  
BOILERS No H2697

SCALE  
1" = ONE FOOT  
DWG. NO. 100  
Sholwa 7/6/39



SUNDERLAND, RET. No 32708.

"Daydawn".

W. PICKERS, ALLESTON

✓ 10 No 241

RICHMONDS WEST

80 LTD. CONT.

H 2497

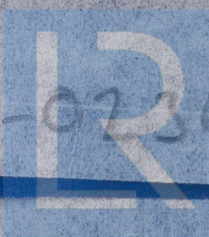
RETAIN

ARMAMENT

✓ SUPERHEATER

Wp 220th

W 382-0230



Lloyd's Register  
Foundation