

Specification of Materials.

Shell and Buttstraps	29-33 Tons.
Girders and Longitudinal Stays	28-32 "
Other plates, Screenstays and Rivets	26-30 "

Shell Plate 10' 10 1/2" wide.
Holes 1 3/16" diam 19 Pitches 9' 4 1/16"

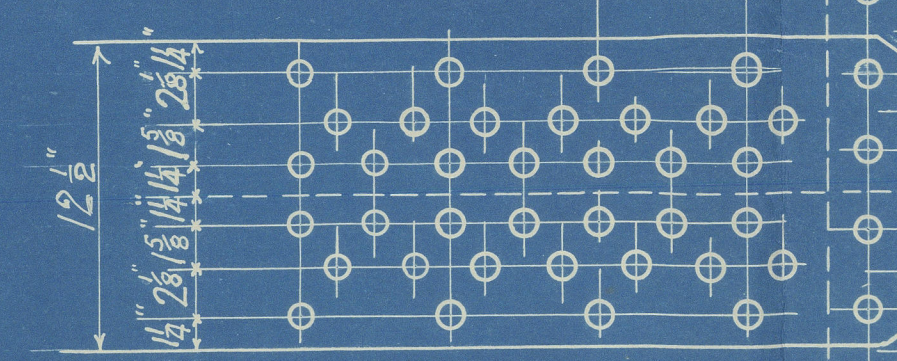


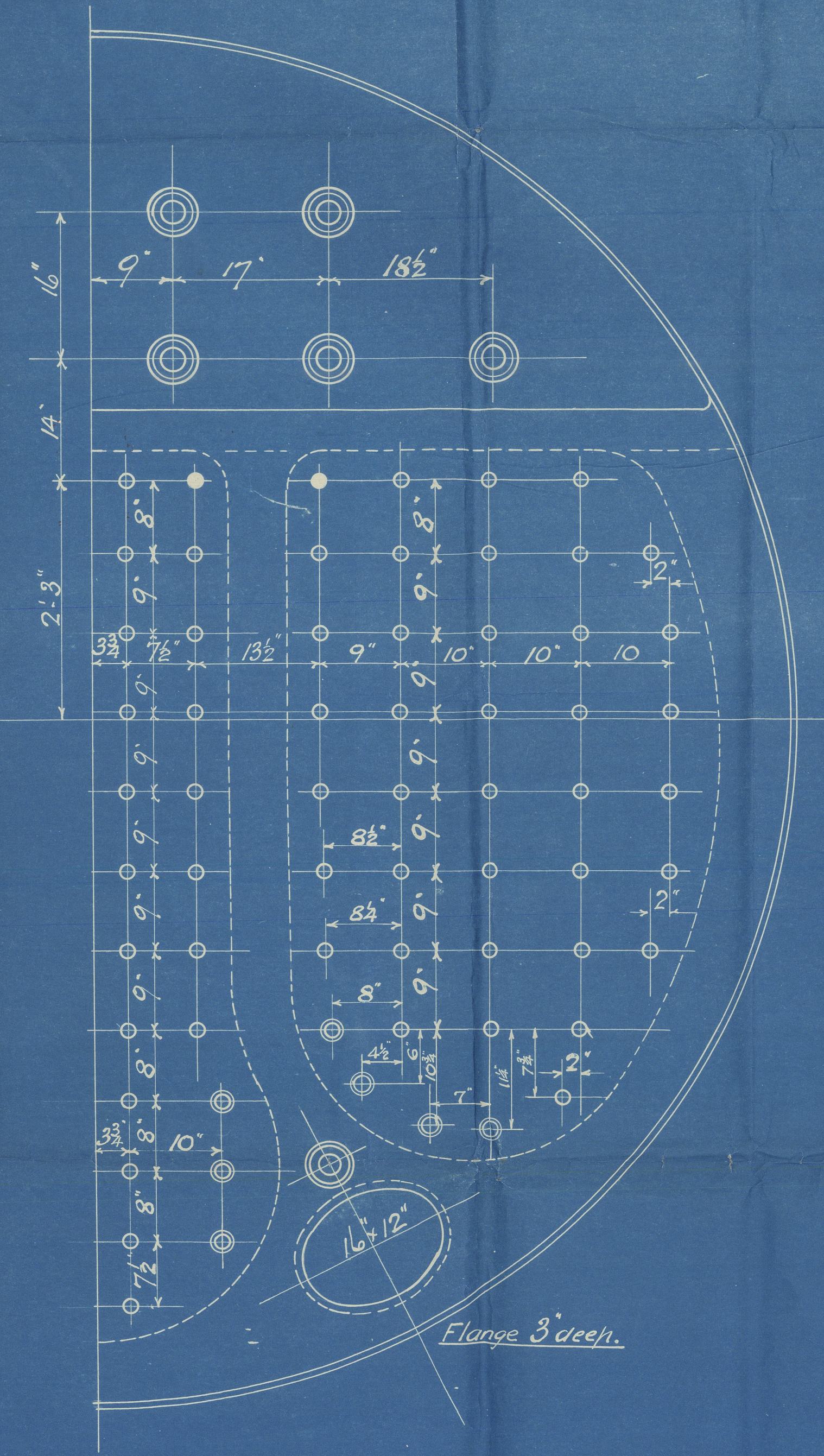
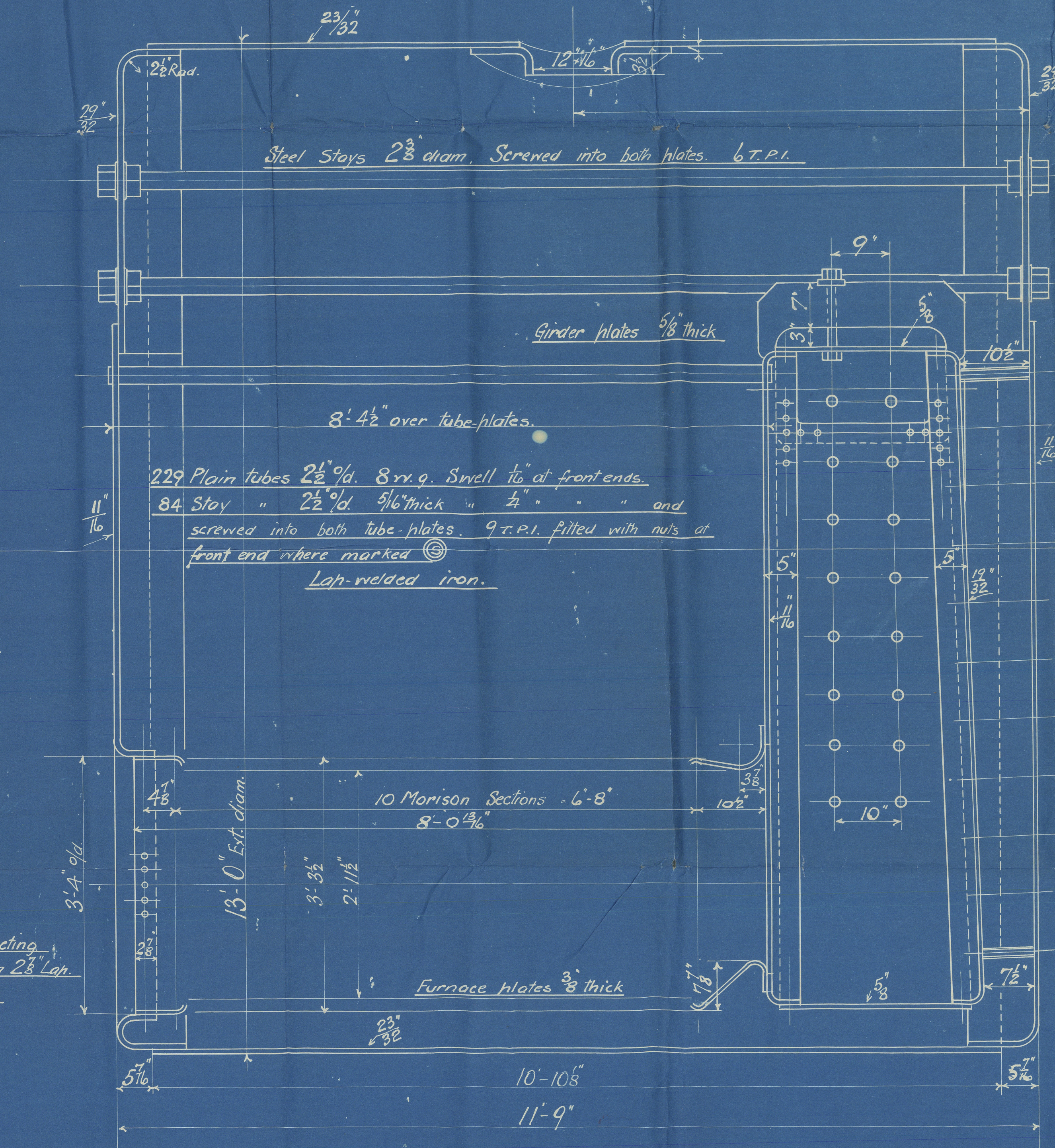
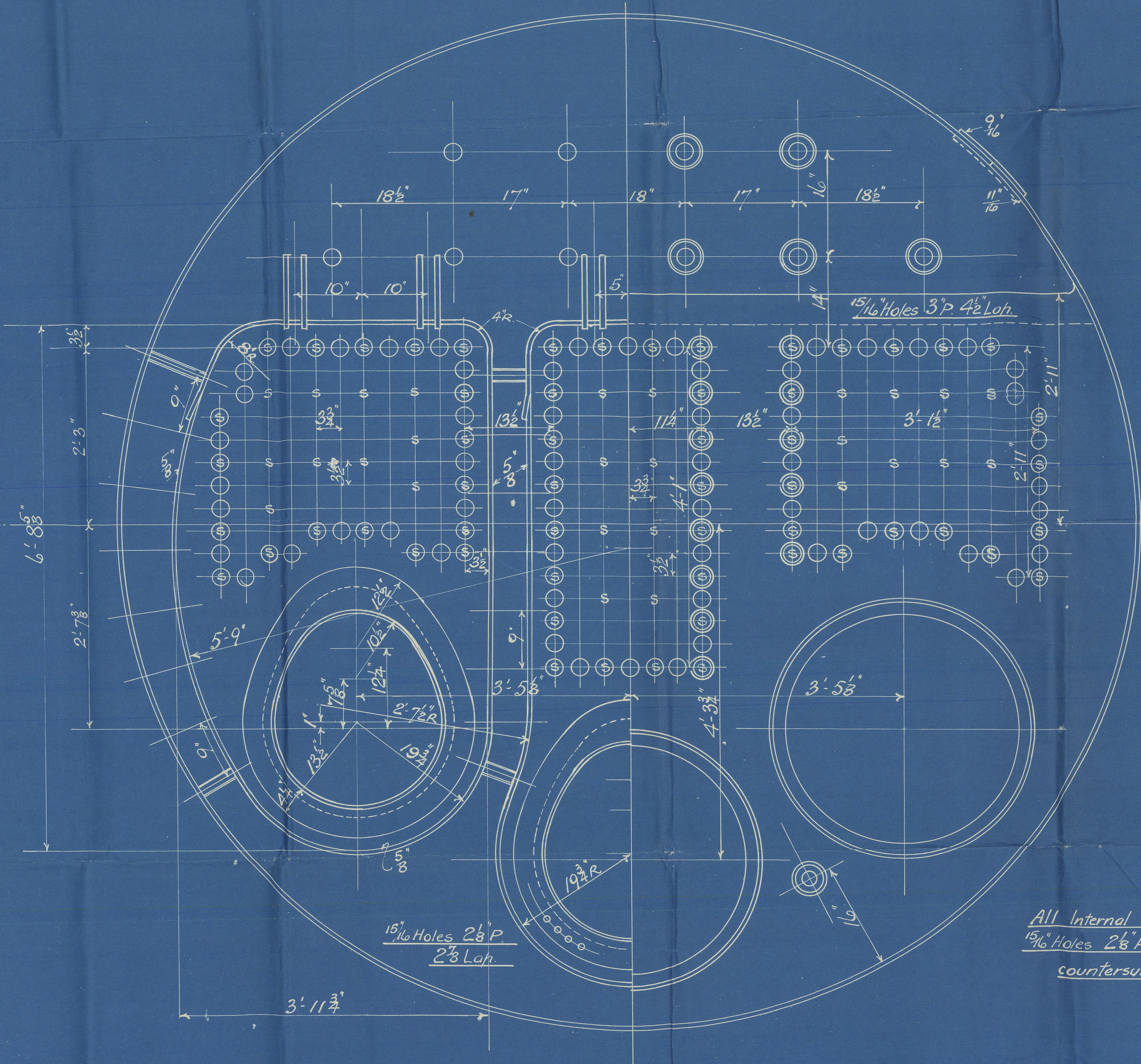
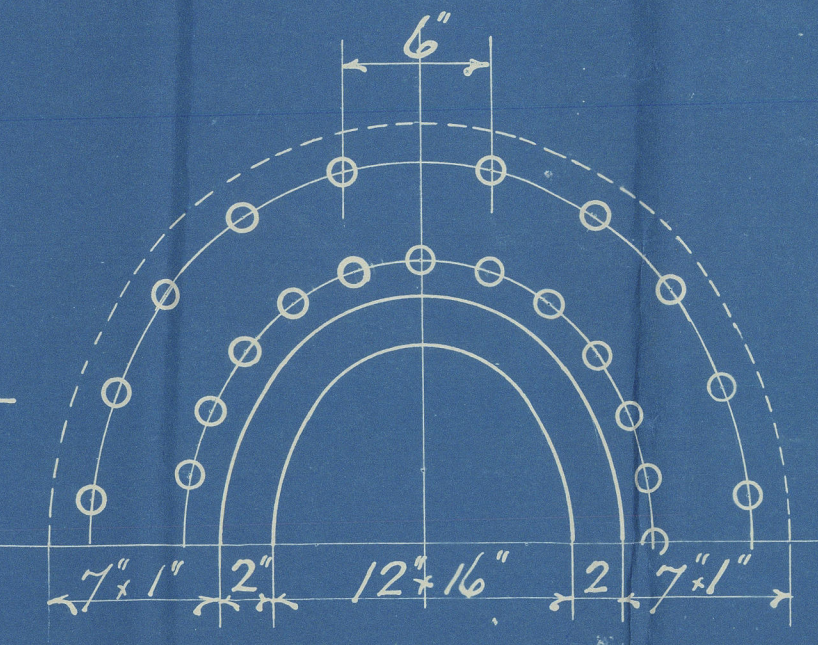
Plate 86-31%
Rivets 93-53%
Buttstrap Outer 9 1/16"
" Inner 1 1/16"

Circum Seams 1 1/2" Holes 3 1/2" Pitch
Plate 67% Rivets 59 9/16%

Combustion Chamber Stays.
Screwed 9 T.P.I. Nutted each end.

Backs - mark	1 3/8" diam
" " "	1 5/8" "
" " "	1 1/2" "
Sides and Tops	1 1/2" "

Manhole Ring Riveting.
44 Holes 1 5/16" diam, about 2 3/4"
hitch in inner row.



Heating Surface	Tubes	1690 sq'
"	Plates	519 sq'
"	Total	2209 sq'

BOILER 13'-0" EXT. DIA. x 11'-9" LONG. 120 LBS. W.P.

LLOYDS SURVEY.

6384

SCALE - 1" = 1 FOOT.

DRG. No. 725

Stocked at Lloyd's Survey
23. 11. 39

Drawn By: GWR
Date: 1.11.39
Traced By:
Date:

"M/V. Fullala"

AMENDED

Sld 32996

Stokton Chemical Engineers & Riley

Bailers Ltd.

Bailer No. 6384

W.P. 120110 D

W. Doxford & Sons 664

APPROVED

W39-0214

LLOYDS