

Specification of Materials.

Shell and Buttstraps	29-33 TONS.
Girders and Longitudinal Stays	28-32 "
Other plates, Screens, stays and Rivets	26-30 "

Shell Plate 10'-10 3/8" wide.  
Holes 1 3/16" diam 19 Pitches 9'-4 1/16"

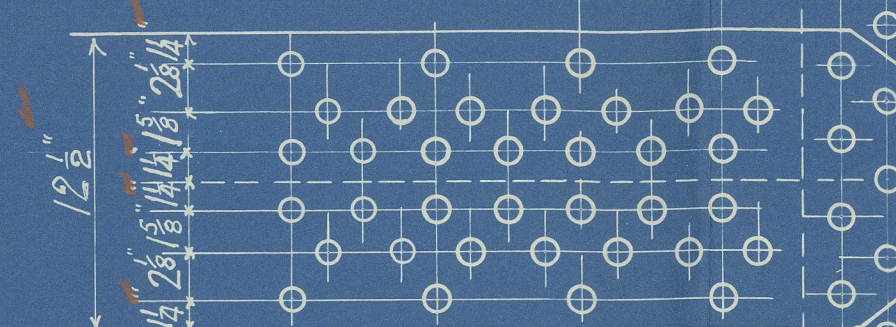


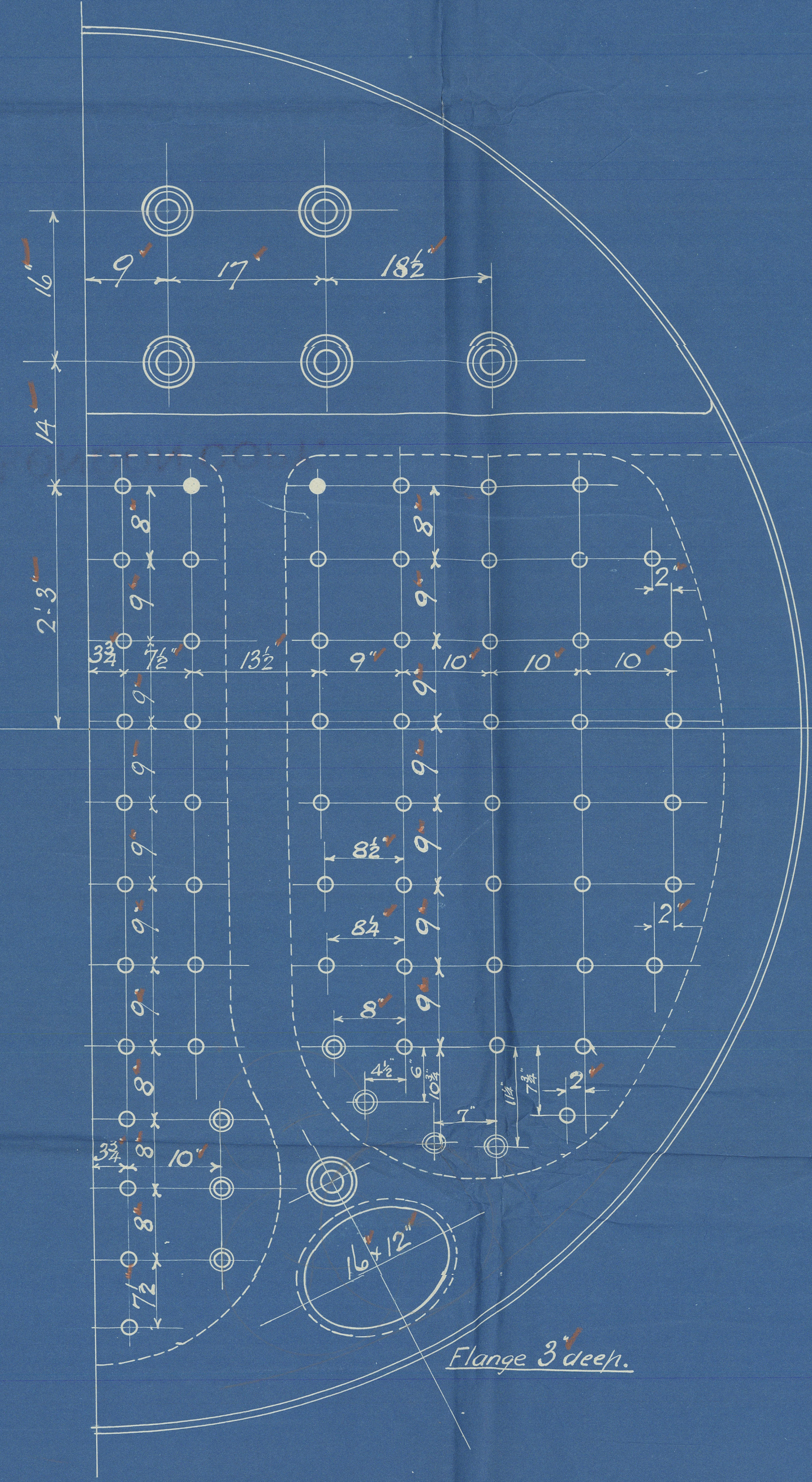
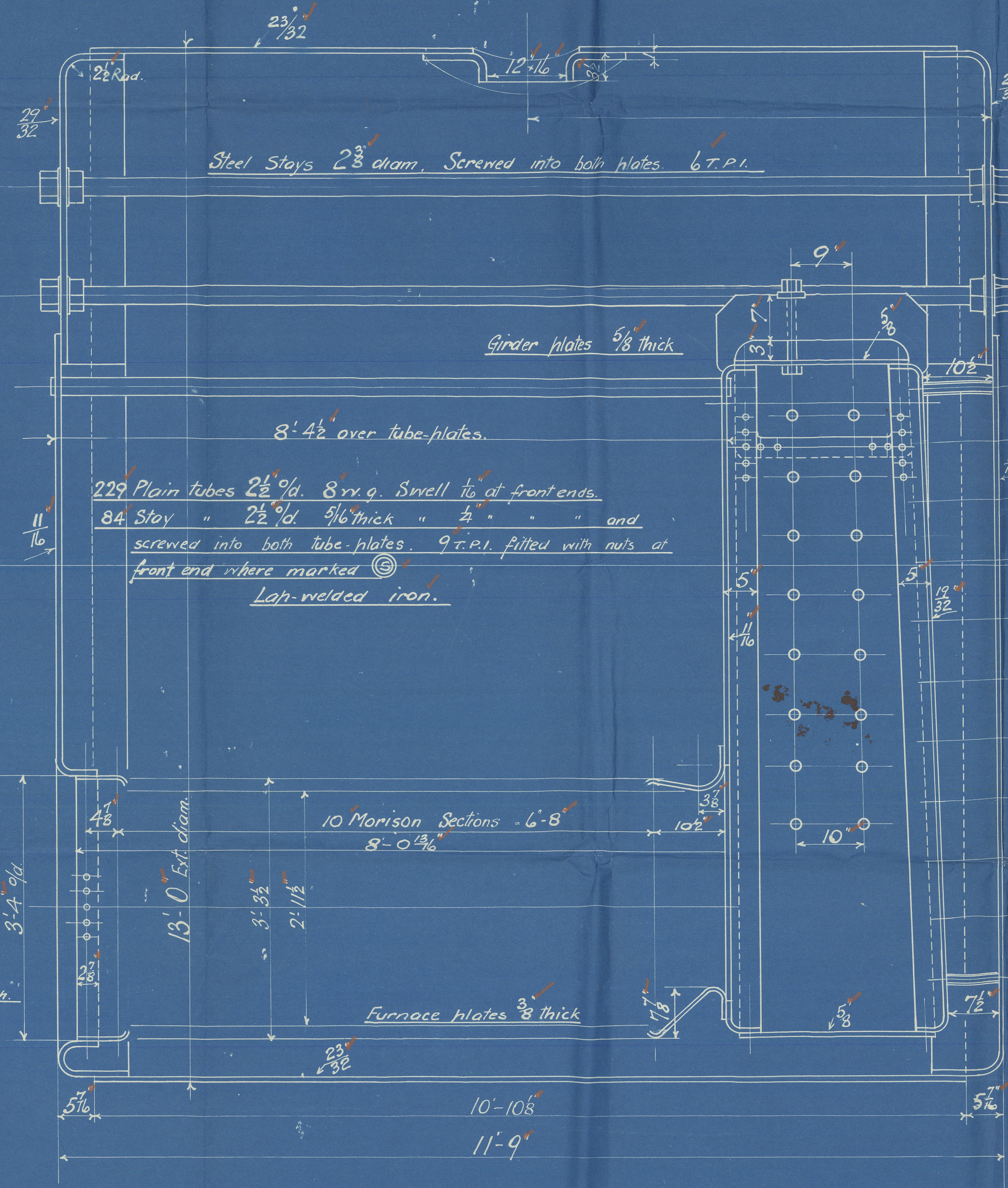
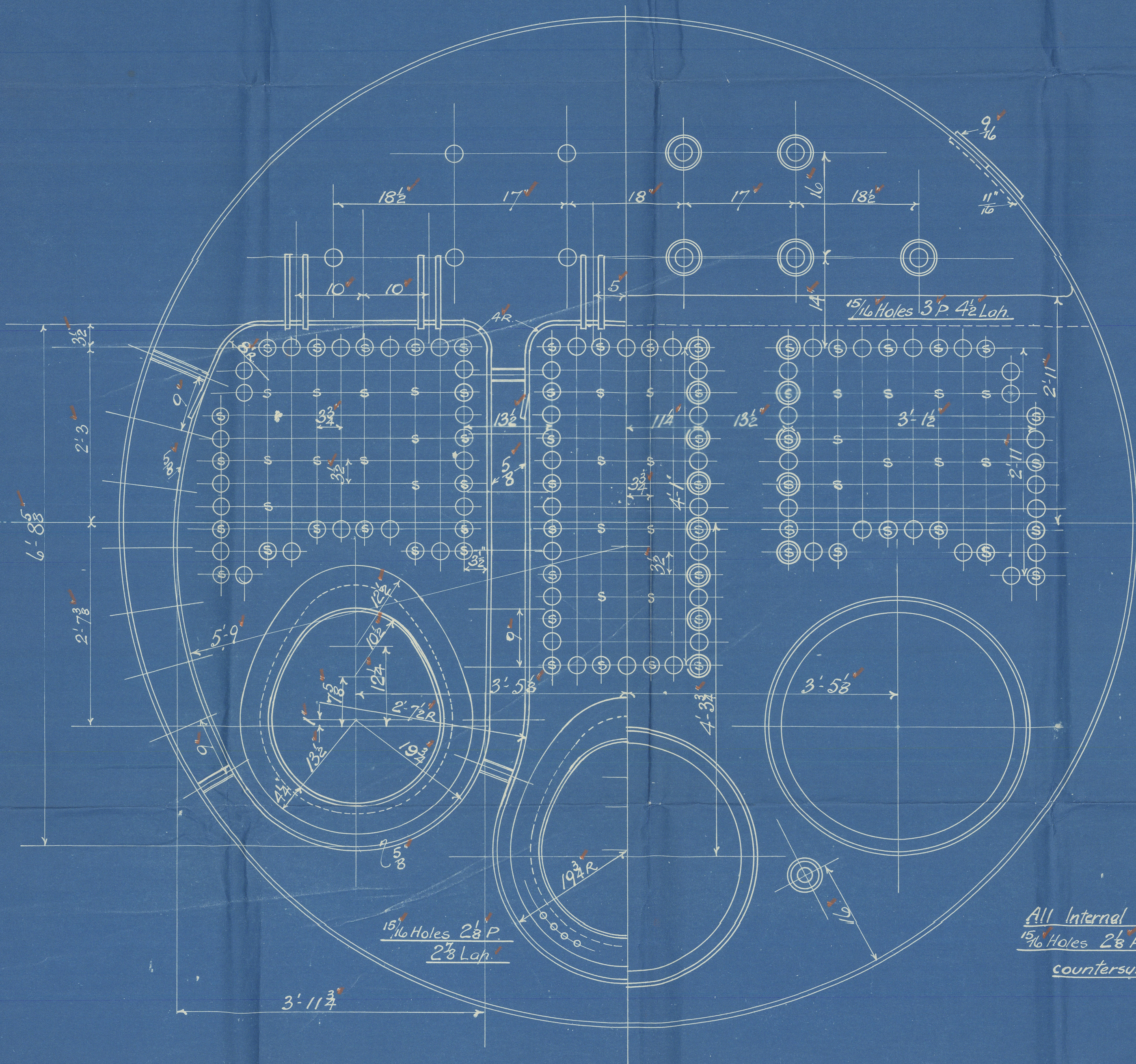
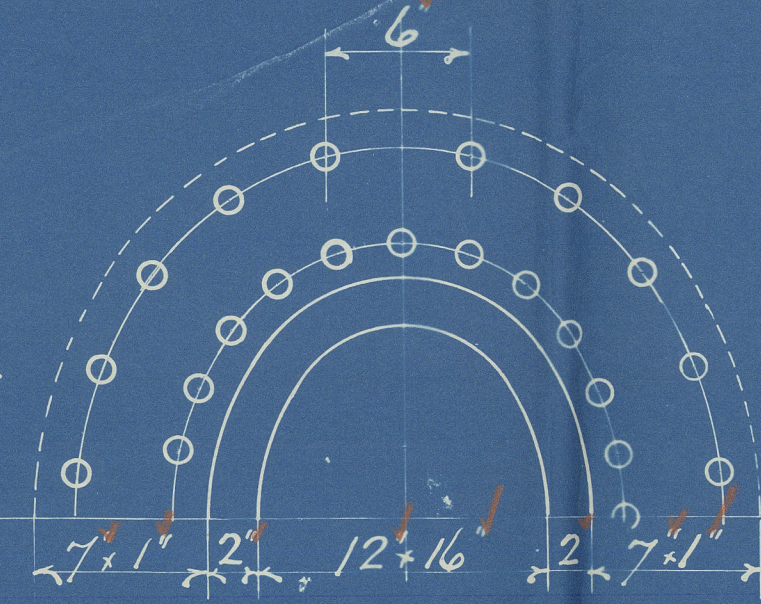
Plate 86.31%  
Rivets 93.53%  
Buttstrap Outer 9 1/16"  
Inner 11 1/16"

Circum Seams 1 1/16" Holes 3 1/2" Pitch  
Plate 67% Rivets 99.9%

Combustion Chamber Stays.  
Screwed 9 T.P.I. NUTTED each end.

Backs - mark	•	1 1/2" diam
"	⊙	1 1/2" "
"	○	1 1/2" "
Sides and Tops		1 1/2" "

Manhole Ring Riveting.  
44 Holes 1 5/16" diam about 2 3/4"  
pitch in inner row.



Heating Surface	Tubes	1690 sq'
"	Plates	519 sq'
"	Total	2209 sq'

BOILER 13'-0" EXT. DIA. x 11'-9" LONG. 120 LBS. W.P.

LLOYDS SURVEY.

6384

SCALE - 1" = 1 FOOT

DRG. No. 725

London Copy  
AJ 25. 11. 39.

London Copy  
AJ 25. 11. 39.



AMENDED

Stockton Chemical Engineers & Riley

Bailers Ltd.

Bailers No. 6384

W.P. 120 cels D"

W. Doxford & Sons No. 664

"FULTA" Sld 32996.

**LONDON COPY.**

GEN BOX NO 155

35

W39-0215

LLOYDS



© 2020

Lloyd's Register  
Foundation