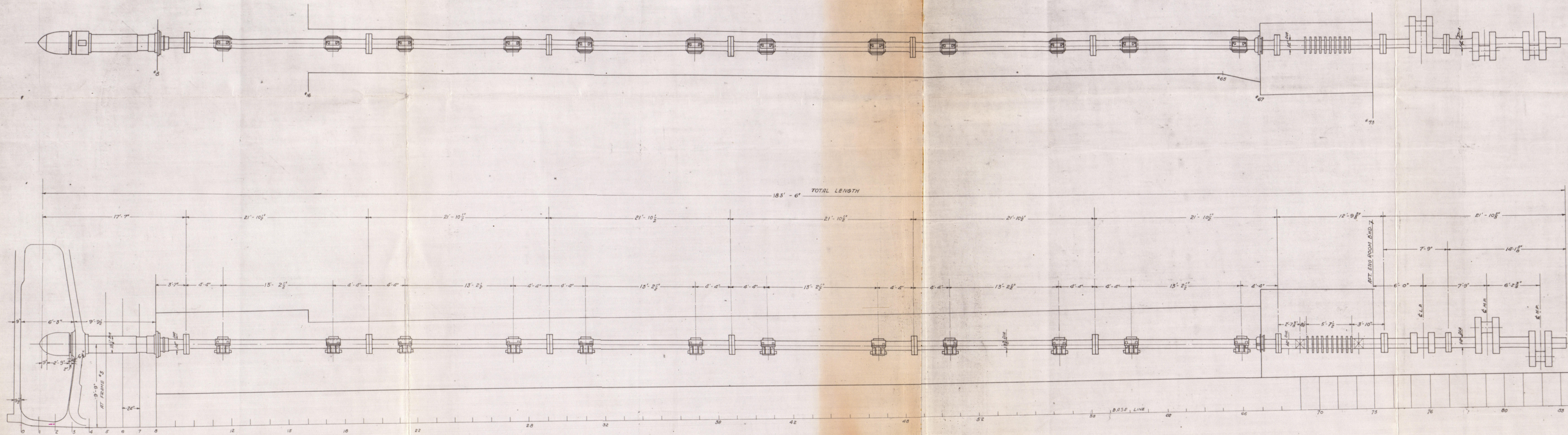


"VALIENTE"

ALTERATIONS	
DATE	ALTERATION
	ADDED DIMENSIONS FOR DIA. OF SHAFT AND REFERENCE NUMBERS
	FORWARD END OF SHAFT DROPPED FROM 7'-9" TO 7'-4"



NOTE:-  
FRAME SPACES 27'  
FOR'D OF FRAME 13  
FRAME SPACES 24'  
AFT OF FRAME 13

REFERENCE DRAWINGS:-  
CRANK SHAFT - E-2500-40  
THRUST SHAFT - E-2500-43  
LINE & PROPELLER SHAFT - E-2500-203

APPROVED  
JUN 23 1918

J. R. Young  
IN CASE OF ERROR OR MISUNDERSTANDING  
NOTIFY THIS OFFICE IMMEDIATELY.

"Guatemala"  
ex  
Valiente

nyk 40295

UNITED STATES SHIPPING BOARD  
EMERGENCY FLEET CORPORATION  
WASHINGTON, D. C.  
FERRIS TYPE  
8800 TONS D.W. - STEEL SHIPS  
ARMY OF LINE SHAFING  
SCALE 1/4" = 1'-0"  
DRAWN BY J. R. Young  
CHECKED BY J. R. Young  
APPROVED J. R. Young  
DRAWING NO. E-2500-201

W 42-0023