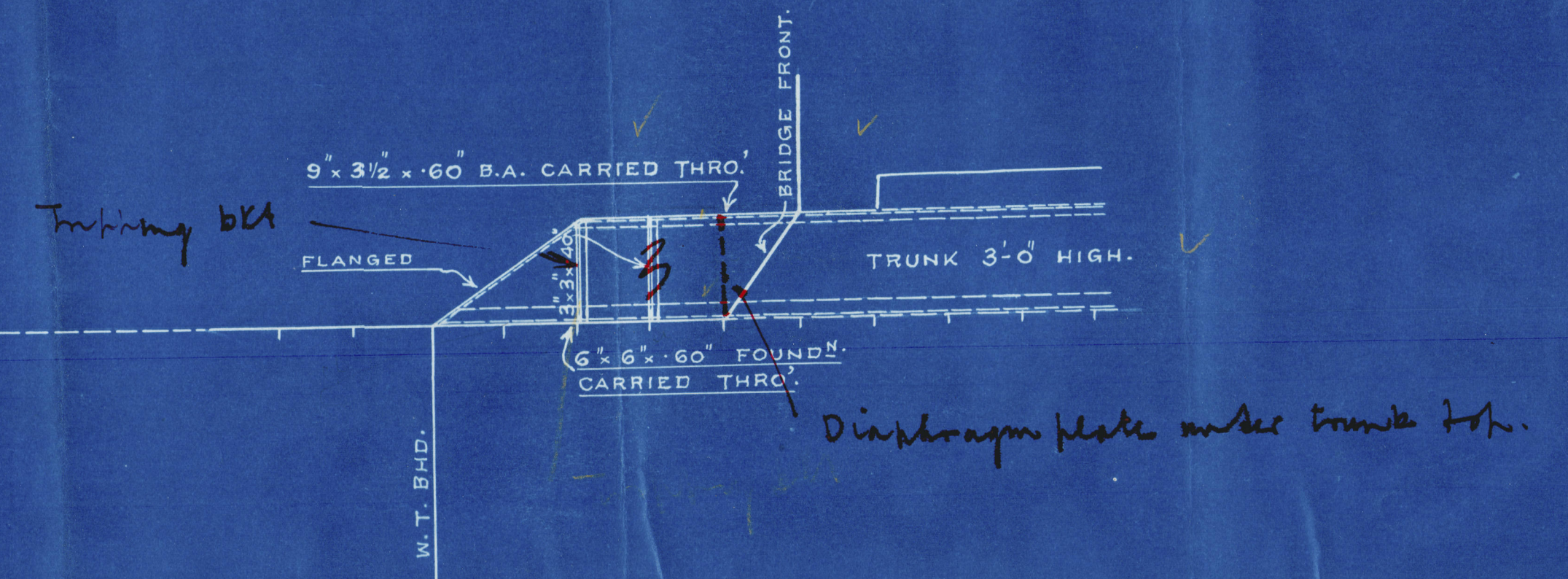
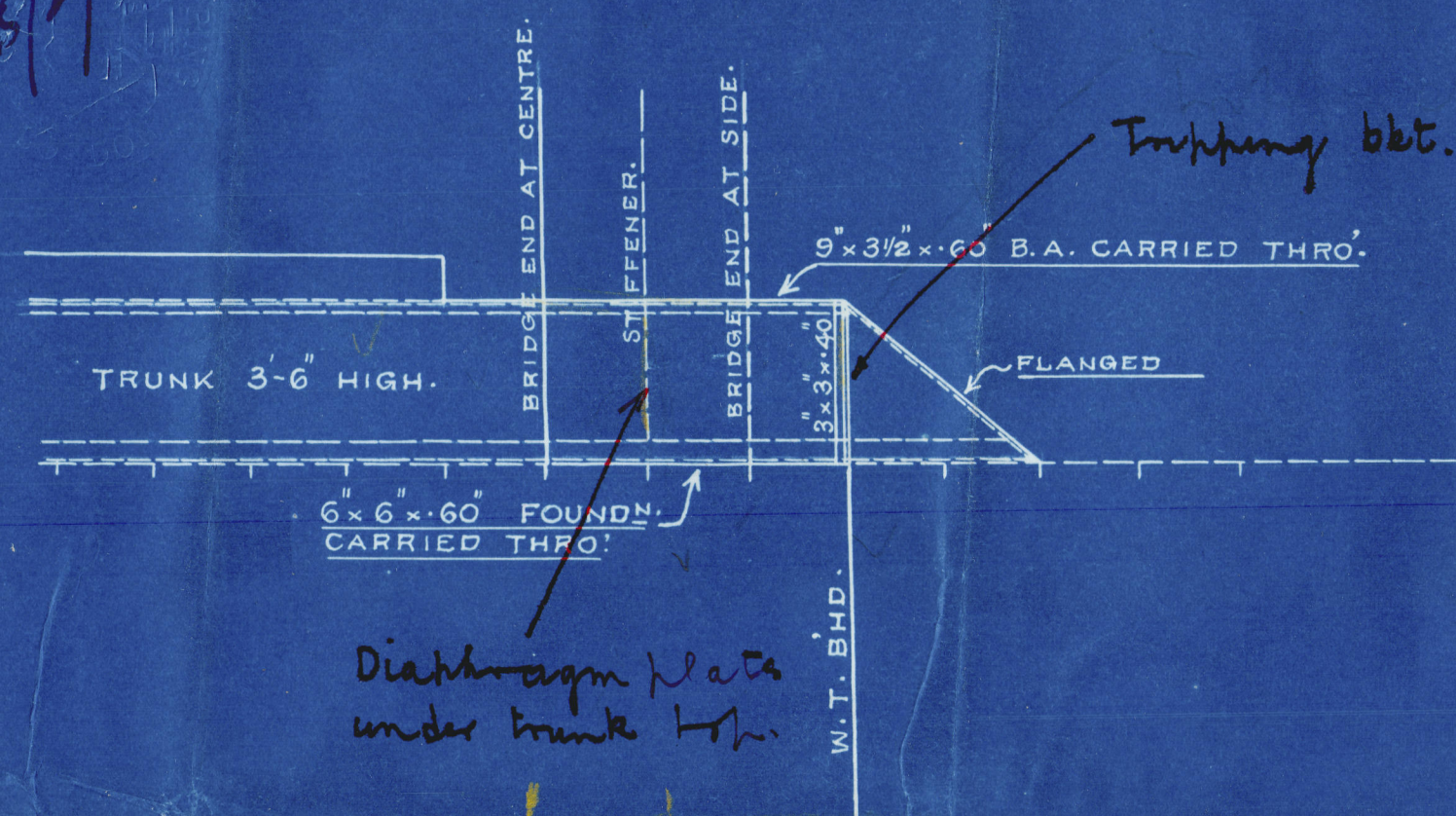


UPPER DECK PLATING AT BRIDGE FRONT & END.

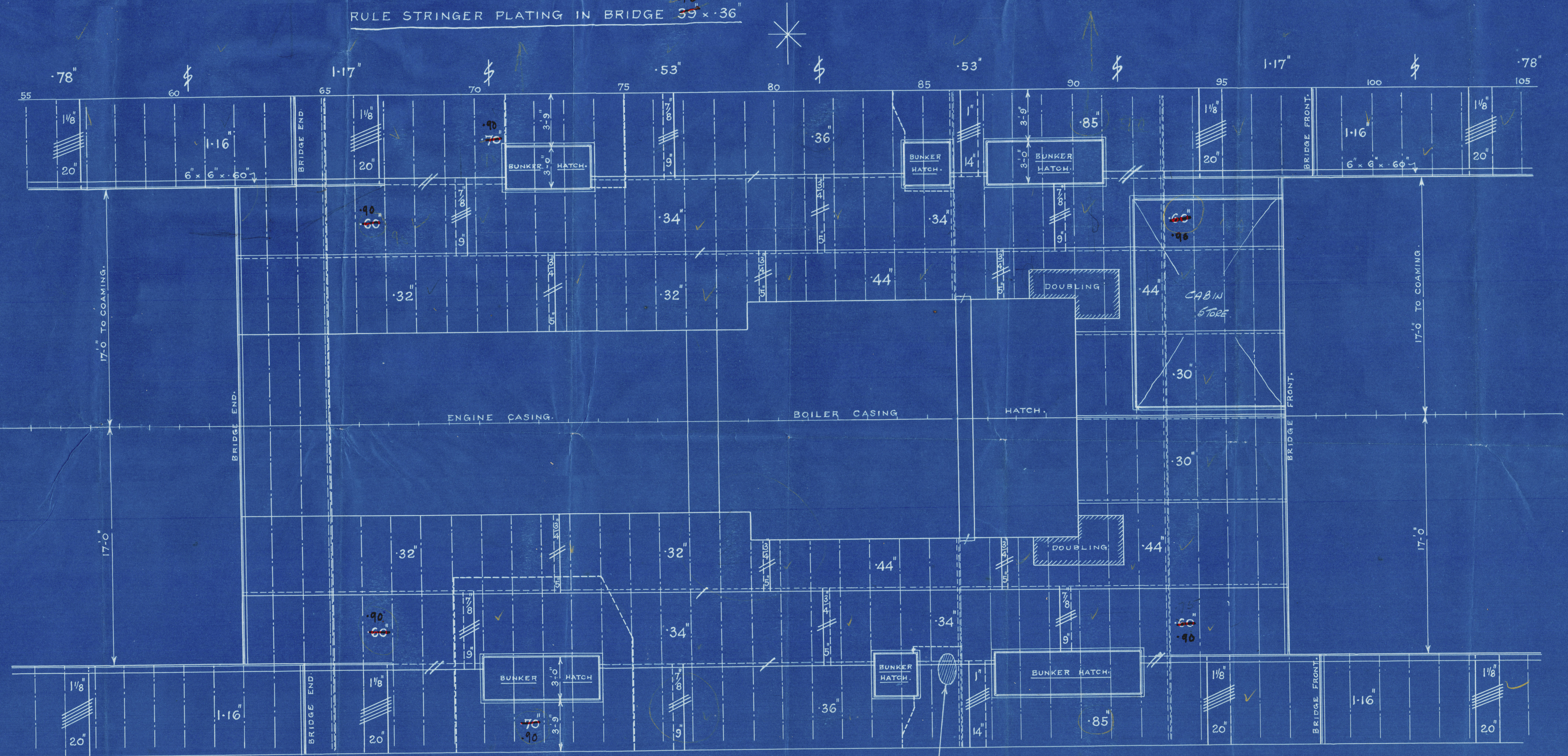
S. S. No. 248.

SCALE $\frac{1}{4}" = 1 \text{ FT.}$

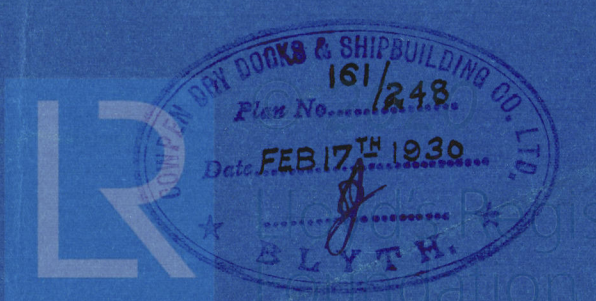
25/2/30



RULE STRINGER PLATING IN BRIDGE 39' x 36'



25-2-30



W 42-0066

(7)

Cowper, D.D & S.B. Co

No. 248

Upper D^H @ Bridge Ends.

SS. "HOLMSIDE".

NEWCASTLE ON TYNE.

Report No. 86043.

W42-0066



© 2020

Lloyd's Register
Foundation