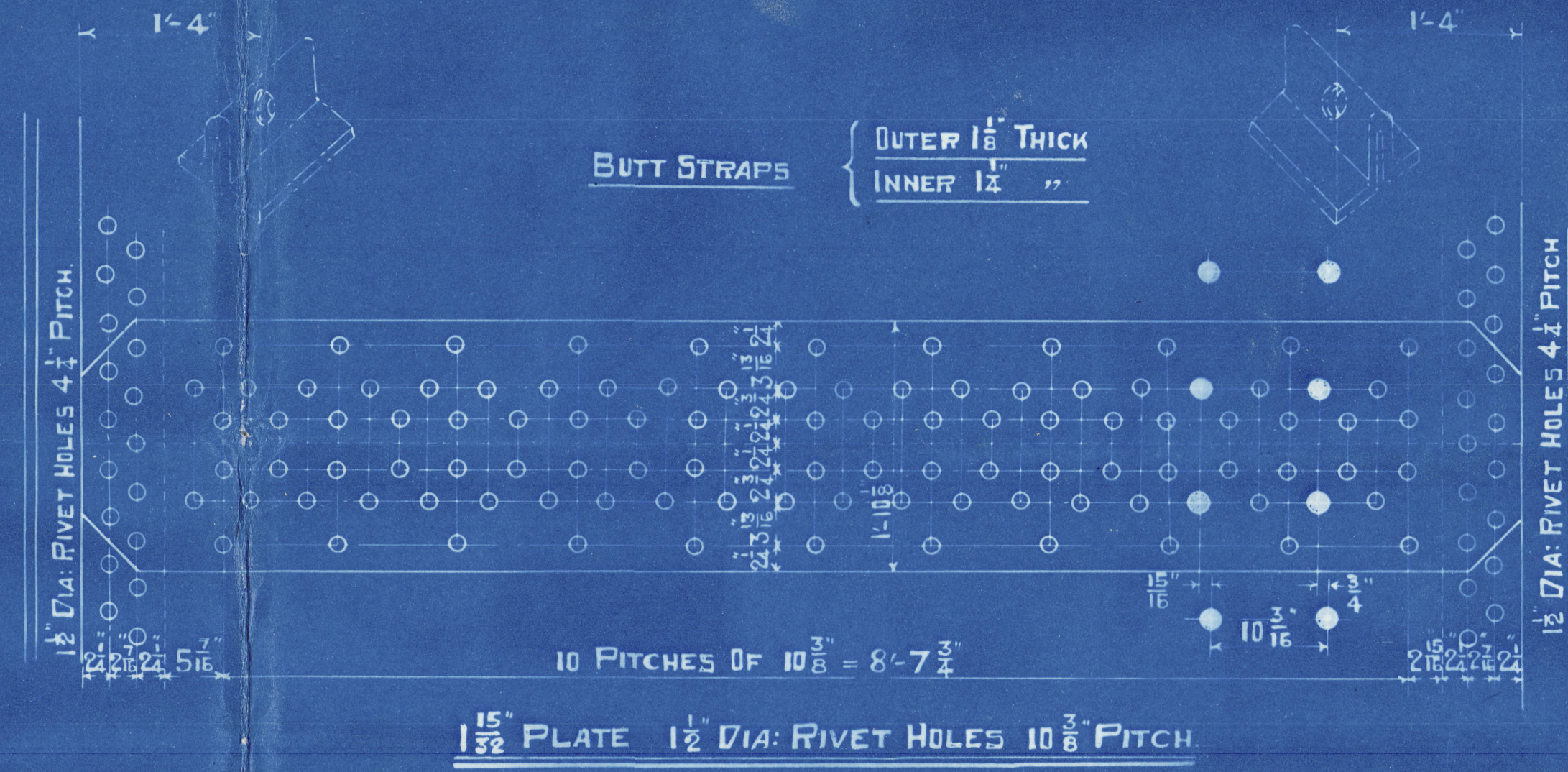
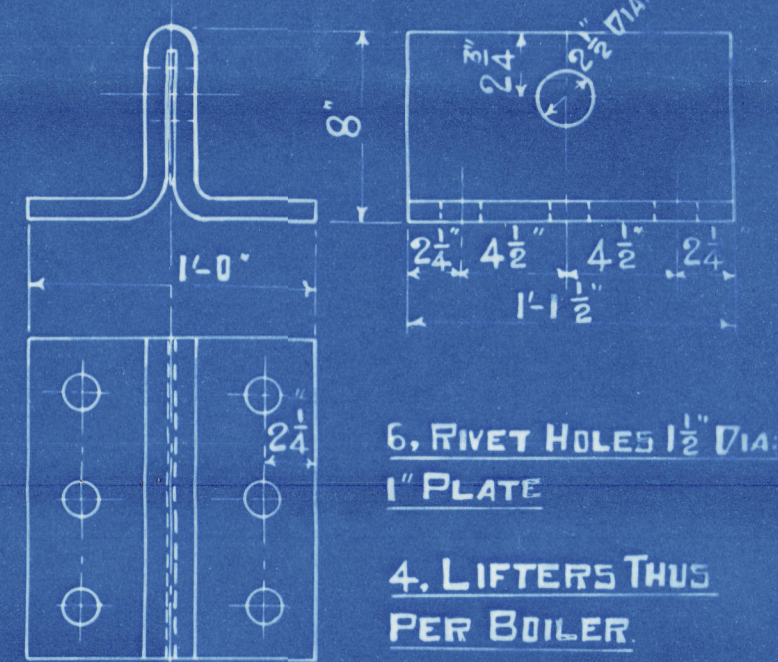


SCALE: 1 INCH = 1 FOOT

MANHOLE 16"x12"  
COMPENSATING PLATE 34-3"x2'-11"x1 1/2" THICK  
HOLE IN SHELL 14-9"x14-5"  
34, RIVET HOLES 1 9/16" DIA:



LLOYDS SURVEY.				
HEATING SURFACE ON TUBES.	=	2047	SQ. FT.	
"	"	ELSEWHERE	=	463 " "
		TOTAL	=	2510 " "
WORKING PRESSURE		220	LBS PER SQ. INCH.	
TEST	"	380	" " " " "	
ALL PLATES, RIVETS & LONGITUDINAL STAYS OF STEEL.				
SCREWED STAYS OF TESTED IRON.				
SMOKE TUBES OF SEAMLESS STEEL.				
TENSILE STRENGTH OF SHELL PLATES BUTT STRAPS &				
GIRDER PLATES 29 TO 33 TONS PER SQ. INCH.				
TENSILE STRENGTH OF ALL OTHER PLATES 26 TO 30 TONS/D"				
"	"	"	LONGITUDINAL STAYS 28	" 32 "/D
"	"	"	SCREWED STAYS	2 1/2 TONS/D MINIMUM
ALL HOLES DRILLED IN PLACE AFTER PLATES ARE BENT				

STAYS MARKED THUS  $\bigcirc 2\frac{1}{4}$ " DIA: 9, THREADS / INCH.  
ALL OTHER SCREWED STAYS 2" DIA: 9, " " " "  
ALL SCREWED STAYS IN C.C. BACKS FITTED WITH NUTS  
AT BOTH ENDS, 2" NUTS 1" DEEP,  $2\frac{1}{4}$ " NUTS 1 $\frac{1}{2}$ " DEEP.

1, THUS - PORT  
1, TO OPPOSITE HAND - STAR<sup>D</sup>

TRACING NO 749  
CONTRACT 2787



N.E.M.E. C<sup>o</sup> L<sup>d</sup>

C. No 2787.

MAIN BOILERS.

2. OFF.

W.P. 220. LBS.

HAWTHORNE LESLIE & C<sup>o</sup>

585  $\frac{5}{8}$

No 542  
LLOYDS TEST  
380 LBS  
W.P. 220 LBS.  
15-3-32 W.B.

---

S.S. *Harpalion*  
NEWCASTLE ON TYNE.

Report No. 88674

---

W42-0133



© 2020

Lloyd's Register  
Foundation