

No. 585. MIDSHIP SECTION.

TO CLASS 100 A.1. AT LLOYDS.

DIMENSIONS. 425'-0" B.P. x 56'-0" B.M. x 28'-9" TO UPPER DECK.
x 37'-9" TO BRIDGE DECK.

SCALE. $\frac{1}{2}'' = 1'-0''$.

NUMERALS.

D = 28.75

L x D = 425 x 28.75 = 12219 = 1st LONGITUDINAL NO.

L (B + D) = 425 (56 + 28.75) = 36019 = 2nd LONGITUDINAL NO.

d = 28.75 - (3.65 + 2.4) = 24.85

d to Upper Deck = 24.85 = 14.78'

d to Bridge = 425 = 11.26'

Erections. = 82.1%

BRIDGE SIDE PLATING .62
POOP .36
FORECASTLE .42

EQUIPMENT NO.

2nd LONGITUDINAL NO. = 36,019

POOP + FORECASTLE 78 x 8.5 x .75 504

LING BRIDGE = 270 x 9 x .75 1,822

HOUSES ETC. = 67.5 x 7.5 x .50 253

28.5 x 7.5 x .50 107

58,705

EQUIPMENT.

2 BOWER ANCHORS 68 CWTs. EACH STOCKLESS.

1 STREAM 19 EX. STOCK.

270 FMS. 2 1/4" STUD CHAIN CABLE.

90 5" STREAM STEEL WIRE

120 4 1/4" TOWLINE SPECIAL FLEXIBLE STEEL WIRE

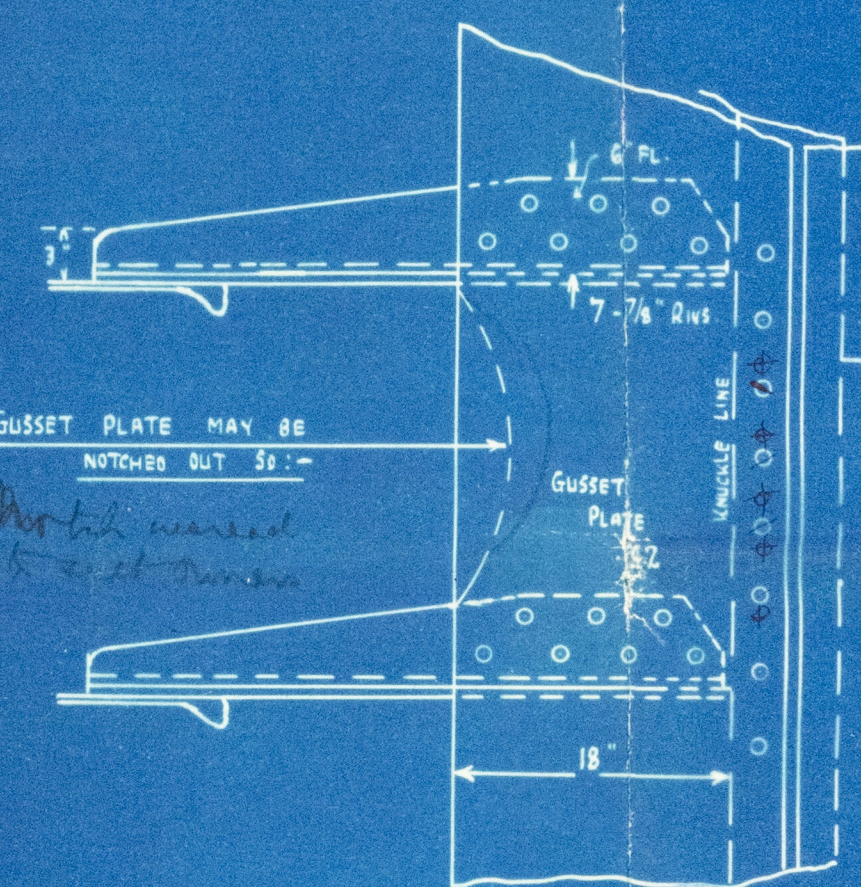
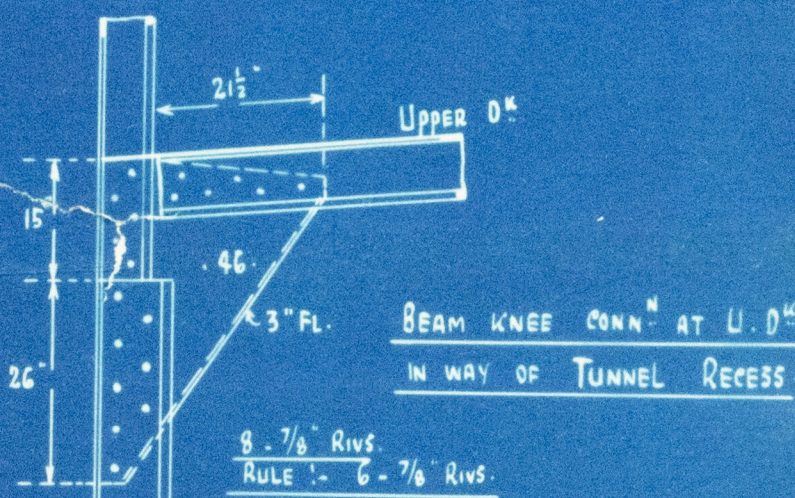
2 LENGTHS 90 FATHOMS EACH 2 1/4" STEEL WIRE HAWSEERS

2 90 2 1/2" WARPS

RVETING TO RULE.

FOR STRENGTHENING IN WAY OF WELLS SEE

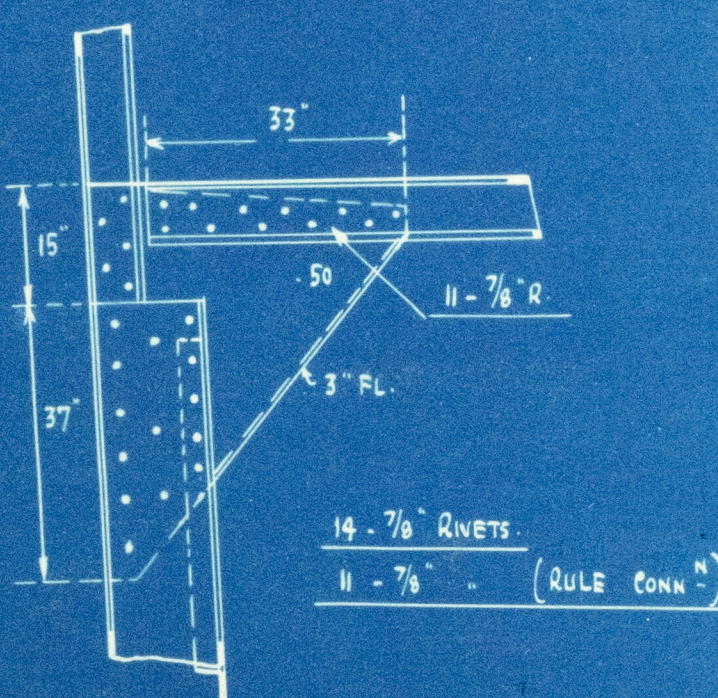
PROFILE & DECK PLAN.



PART EXPANSION SHOWING RIVETING THRU GUSSET PLATE.

Scale 1" = 1'-0"

When oil is carried in double bottom must have 9 rivets to bracket 47 rivets per frame space to margin



DEEP BEAM KNEES AT Upper Deck

IN WAY OF PAINTING FRAMES.

POOP DECK STRINGER 36" x 36" DECK .34 .30 WHERE SHEATHED
POOP 36" x 36" DECK .34
BRIDGE DECK STRINGER 58" x 58" OR 63" x 63"
DECK PLATING .54
WITHIN LINE OF OPENINGS .36
STRINGER ANGLE 5" x 5" x 5/8" TO 3 1/2" x 3 1/2" x 3/4" AT POOP & FEEL

16" TUMBLEHOME AT BRIDGE DECK

BRIDGE DECK BEAMS IN WAY OF 24" x 36" OPENINGS 7" x 3" x 40 B.A.

BRIDGE DECK BEAMS IN WAY OF 24" x 36" OPENINGS 7" x 3" x 45 B.A. N.B.S.

BRIDGE DECK BEAMS IN WAY OF 24" x 36" OPENINGS 7" x 3" x 45 B.A. N.B.S.

BRIDGE DECK BEAMS IN WAY OF 24" x 36" OPENINGS 7" x 3" x 45 B.A. N.B.S.

BRIDGE DECK BEAMS IN WAY OF 24" x 36" OPENINGS 7" x 3" x 45 B.A. N.B.S.

BRIDGE DECK BEAMS IN WAY OF 24" x 36" OPENINGS 7" x 3" x 45 B.A. N.B.S.

BRIDGE DECK BEAMS IN WAY OF 24" x 36" OPENINGS 7" x 3" x 45 B.A. N.B.S.

BRIDGE DECK BEAMS IN WAY OF 24" x 36" OPENINGS 7" x 3" x 45 B.A. N.B.S.

BRIDGE DECK BEAMS IN WAY OF 24" x 36" OPENINGS 7" x 3" x 45 B.A. N.B.S.

BRIDGE DECK BEAMS IN WAY OF 24" x 36" OPENINGS 7" x 3" x 45 B.A. N.B.S.

BRIDGE DECK BEAMS IN WAY OF 24" x 36" OPENINGS 7" x 3" x 45 B.A. N.B.S.

BRIDGE DECK BEAMS IN WAY OF 24" x 36" OPENINGS 7" x 3" x 45 B.A. N.B.S.

BRIDGE DECK BEAMS IN WAY OF 24" x 36" OPENINGS 7" x 3" x 45 B.A. N.B.S.

BRIDGE DECK BEAMS IN WAY OF 24" x 36" OPENINGS 7" x 3" x 45 B.A. N.B.S.

BRIDGE DECK BEAMS IN WAY OF 24" x 36" OPENINGS 7" x 3" x 45 B.A. N.B.S.

BRIDGE DECK BEAMS IN WAY OF 24" x 36" OPENINGS 7" x 3" x 45 B.A. N.B.S.

BRIDGE DECK BEAMS IN WAY OF 24" x 36" OPENINGS 7" x 3" x 45 B.A. N.B.S.

BRIDGE DECK BEAMS IN WAY OF 24" x 36" OPENINGS 7" x 3" x 45 B.A. N.B.S.

BRIDGE DECK BEAMS IN WAY OF 24" x 36" OPENINGS 7" x 3" x 45 B.A. N.B.S.

BRIDGE DECK BEAMS IN WAY OF 24" x 36" OPENINGS 7" x 3" x 45 B.A. N.B.S.

BRIDGE DECK BEAMS IN WAY OF 24" x 36" OPENINGS 7" x 3" x 45 B.A. N.B.S.

BRIDGE DECK BEAMS IN WAY OF 24" x 36" OPENINGS 7" x 3" x 45 B.A. N.B.S.

BRIDGE DECK BEAMS IN WAY OF 24" x 36" OPENINGS 7" x 3" x 45 B.A. N.B.S.

BRIDGE DECK BEAMS IN WAY OF 24" x 36" OPENINGS 7" x 3" x 45 B.A. N.B.S.

BRIDGE DECK BEAMS IN WAY OF 24" x 36" OPENINGS 7" x 3" x 45 B.A. N.B.S.

BRIDGE DECK BEAMS IN WAY OF 24" x 36" OPENINGS 7" x 3" x 45 B.A. N.B.S.

BRIDGE DECK BEAMS IN WAY OF 24" x 36" OPENINGS 7" x 3" x 45 B.A. N.B.S.

BRIDGE DECK BEAMS IN WAY OF 24" x 36" OPENINGS 7" x 3" x 45 B.A. N.B.S.

BRIDGE DECK BEAMS IN WAY OF 24" x 36" OPENINGS 7" x 3" x 45 B.A. N.B.S.

BRIDGE DECK BEAMS IN WAY OF 24" x 36" OPENINGS 7" x 3" x 45 B.A. N.B.S.

BRIDGE DECK BEAMS IN WAY OF 24" x 36" OPENINGS 7" x 3" x 45 B.A. N.B.S.

BRIDGE DECK BEAMS IN WAY OF 24" x 36" OPENINGS 7" x 3" x 45 B.A. N.B.S.

BRIDGE DECK BEAMS IN WAY OF 24" x 36" OPENINGS 7" x 3" x 45 B.A. N.B.S.

BRIDGE DECK BEAMS IN WAY OF 24" x 36" OPENINGS 7" x 3" x 45 B.A. N.B.S.

BRIDGE DECK BEAMS IN WAY OF 24" x 36" OPENINGS 7" x 3" x 45 B.A. N.B.S.

BRIDGE DECK BEAMS IN WAY OF 24" x 36" OPENINGS 7" x 3" x 45 B.A. N.B.S.

BRIDGE DECK BEAMS IN WAY OF 24" x 36" OPENINGS 7" x 3" x 45 B.A. N.B.S.

BRIDGE DECK BEAMS IN WAY OF 24" x 36" OPENINGS 7" x 3" x 45 B.A. N.B.S.

BRIDGE DECK BEAMS IN WAY OF 24" x 36" OPENINGS 7" x 3" x 45 B.A. N.B.S.

BRIDGE DECK BEAMS IN WAY OF 24" x 36" OPENINGS 7" x 3" x 45 B.A. N.B.S.

BRIDGE DECK BEAMS IN WAY OF 24" x 36" OPENINGS 7" x 3" x 45 B.A. N.B.S.

BRIDGE DECK BEAMS IN WAY OF 24" x 36" OPENINGS 7" x 3" x 45 B.A. N.B.S.

BRIDGE DECK BEAMS IN WAY OF 24" x 36" OPENINGS 7" x 3" x 45 B.A. N.B.S.

BRIDGE DECK BEAMS IN WAY OF 24" x 36" OPENINGS 7" x 3" x 45 B.A. N.B.S.

BRIDGE DECK BEAMS IN WAY OF 24" x 36" OPENINGS 7" x 3" x 45 B.A. N.B.S.

BRIDGE DECK BEAMS IN WAY OF 24" x 36" OPENINGS 7" x 3" x 45 B.A. N.B.S.

BRIDGE DECK BEAMS IN WAY OF 24" x 36" OPENINGS 7" x 3" x 45 B.A. N.B.S.

BRIDGE DECK BEAMS IN WAY OF 24" x 36" OPENINGS 7" x 3" x 45 B.A. N.B.S.

BRIDGE DECK BEAMS IN WAY OF 24" x 36" OPENINGS 7" x 3" x 45 B.A. N.B.S.

BRIDGE DECK BEAMS IN WAY OF 24" x 36" OPENINGS 7" x 3" x 45 B.A. N.B.S.

BRIDGE DECK BEAMS IN WAY OF 24" x 36" OPENINGS 7" x 3" x 45 B.A. N.B.S.

BRIDGE DECK BEAMS IN WAY OF 24" x 36" OPENINGS 7" x 3" x 45 B.A. N.B.S.

BRIDGE DECK BEAMS IN WAY OF 24" x 36" OPENINGS 7" x 3" x 45 B.A. N.B.S.

BRIDGE DECK BEAMS IN WAY OF 24" x 36" OPENINGS 7" x 3" x 45 B.A. N.B.S.

BRIDGE DECK BEAMS IN WAY OF 24" x 36" OPENINGS 7" x 3" x 45 B.A. N.B.S.

BRIDGE DECK BEAMS IN WAY OF 24" x 36" OPENINGS 7" x 3" x 45 B.A. N.B.S.

BRIDGE DECK BEAMS IN WAY OF 24" x 36" OPENINGS 7" x 3" x 45 B.A. N.B.S.

BRIDGE DECK BEAMS IN WAY OF 24" x 36" OPENINGS 7" x 3" x 45 B.A. N.B.S.

BRIDGE DECK BEAMS IN WAY OF 24" x 36" OPENINGS 7" x 3" x 45 B.A. N.B.S.

BRIDGE DECK BEAMS IN WAY OF 24" x 36" OPENINGS 7" x 3" x 45 B.A. N.B.S.

BRIDGE DECK BEAMS IN WAY OF 24" x 36" OPENINGS 7" x 3" x 45 B.A. N.B.S.

BRIDGE DECK BEAMS IN WAY OF 24" x 36" OPENINGS 7" x 3" x 45 B.A. N.B.S.

BRIDGE DECK BEAMS IN WAY OF 24" x 36" OPENINGS 7" x 3" x 45 B.A. N.B.S.

BRIDGE DECK BEAMS IN WAY OF 24" x 36" OPENINGS 7" x 3" x 45 B.A. N.B.S.

BRIDGE DECK BEAMS IN WAY OF 24" x 36" OPENINGS 7" x 3" x 45 B.A. N.B.S.

BRIDGE DECK BEAMS IN WAY OF 24" x 36" OPENINGS 7" x 3" x 45 B.A. N.B.S.

BRIDGE DECK BEAMS IN WAY OF 24" x 36" OPENINGS 7" x 3" x 45 B.A. N.B.S.

BRIDGE DECK BEAMS IN WAY OF 24" x 36" OPENINGS 7" x 3" x 45 B.A. N.B.S.

BRIDGE DECK BEAMS IN WAY OF 24" x 36" OPENINGS 7" x 3" x 45 B.A. N.B.S.

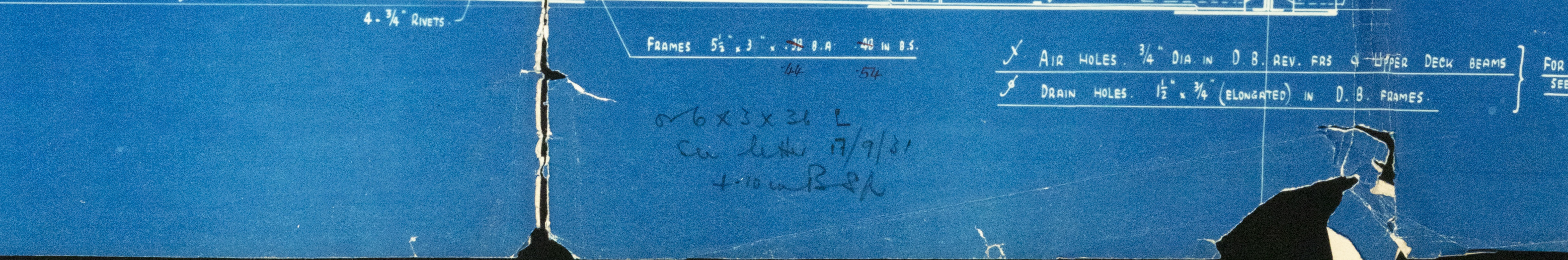
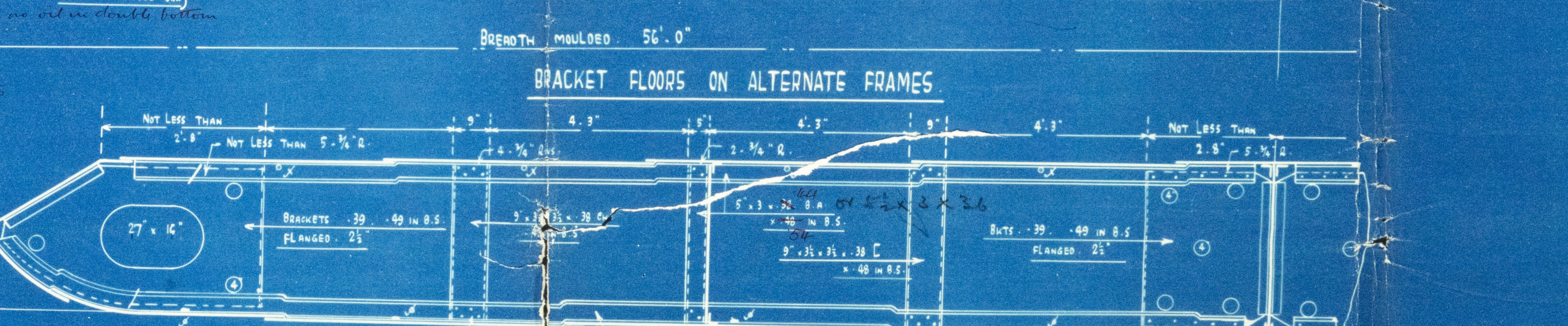
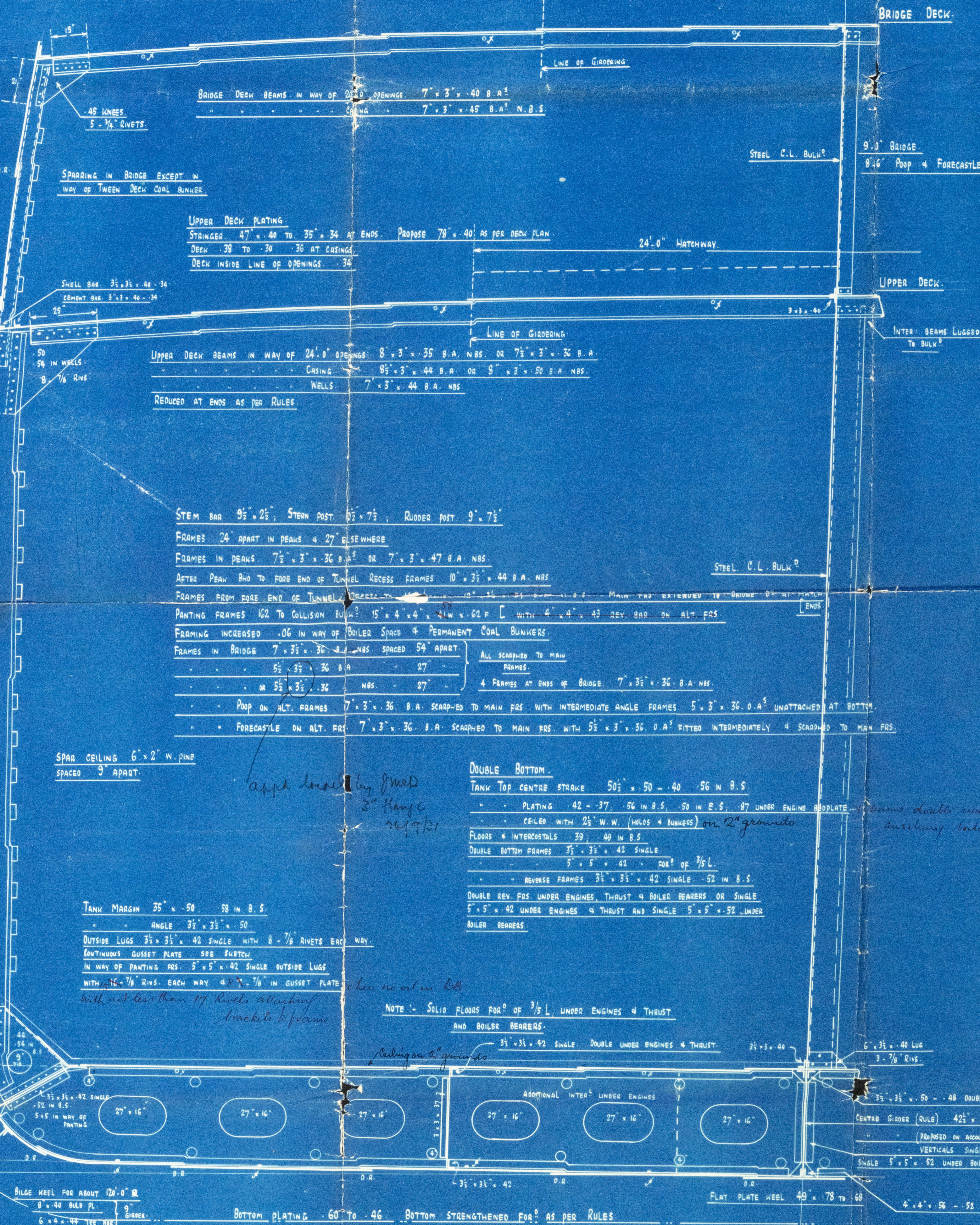
BRIDGE DECK BEAMS IN WAY OF 24" x 36" OPENINGS 7" x 3" x 45 B.A. N.B.S.

BRIDGE DECK BEAMS IN WAY OF 24" x 36" OPENINGS 7" x 3" x 45 B.A. N.B.S.

BRIDGE DECK BEAMS IN WAY OF 24" x 36" OPENINGS 7" x 3" x 45 B.A. N.B.S.

BRIDGE DECK BEAMS IN WAY OF 24" x 36" OPENINGS 7" x 3" x 45 B.A. N.B.S.

BRIDGE DECK BEAMS IN WAY OF 24" x 36" OPENINGS 7" x 3" x 45 B.A. N.B.S.



Beams double riveted in way of oil fuel under Tunnel and auxiliary boiler (oil where no casing is fitted)

THE FLASH POINT OF THE OIL FUEL TO BE CARRIED SHOULD BE NOT LOWER THAN 100°F AND THE REQUIREMENTS OF SECTION 20 OF THE RULES SHOULD BE COMPLIED WITH.

1726
18 SEP 1931
HAWTHORN, LESLIE & CO. LTD.
NEWCASTLE-ON-TYNE

11-2-31

1) Midship Section

Hawthorn Leslie L/R 5-85

585 mls

S.S. Harbation.
NEWCASTLE ON TYNE.

Report No. 8864A.

W/42-0135



© 2020

Lloyd's Register
Foundation