

# Nº 497. MIDSHIP SECTION.

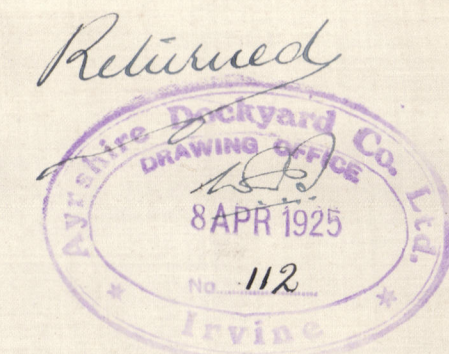
DIMENSIONS = 245'-0" x 36'-0" x 14'-6" x 22'-0" MLD.

SCALE = 1/2" = 1 FOOT.

TO CLASS 100A1 LLOYDS (FREEBOARD) 1924-25 RULES.

NUMERALS -	D	=	22.0
	d	=	11.21
	L x D	=	5390
	L (B + D)	=	14210
	5	=	11.14 TO UPPER D <sup>o</sup>
		=	8.3 TO BRIDGE D <sup>o</sup>

with thickness corresponding to a draft not exceeding that of a C.S.S. steel with tonnage opening.



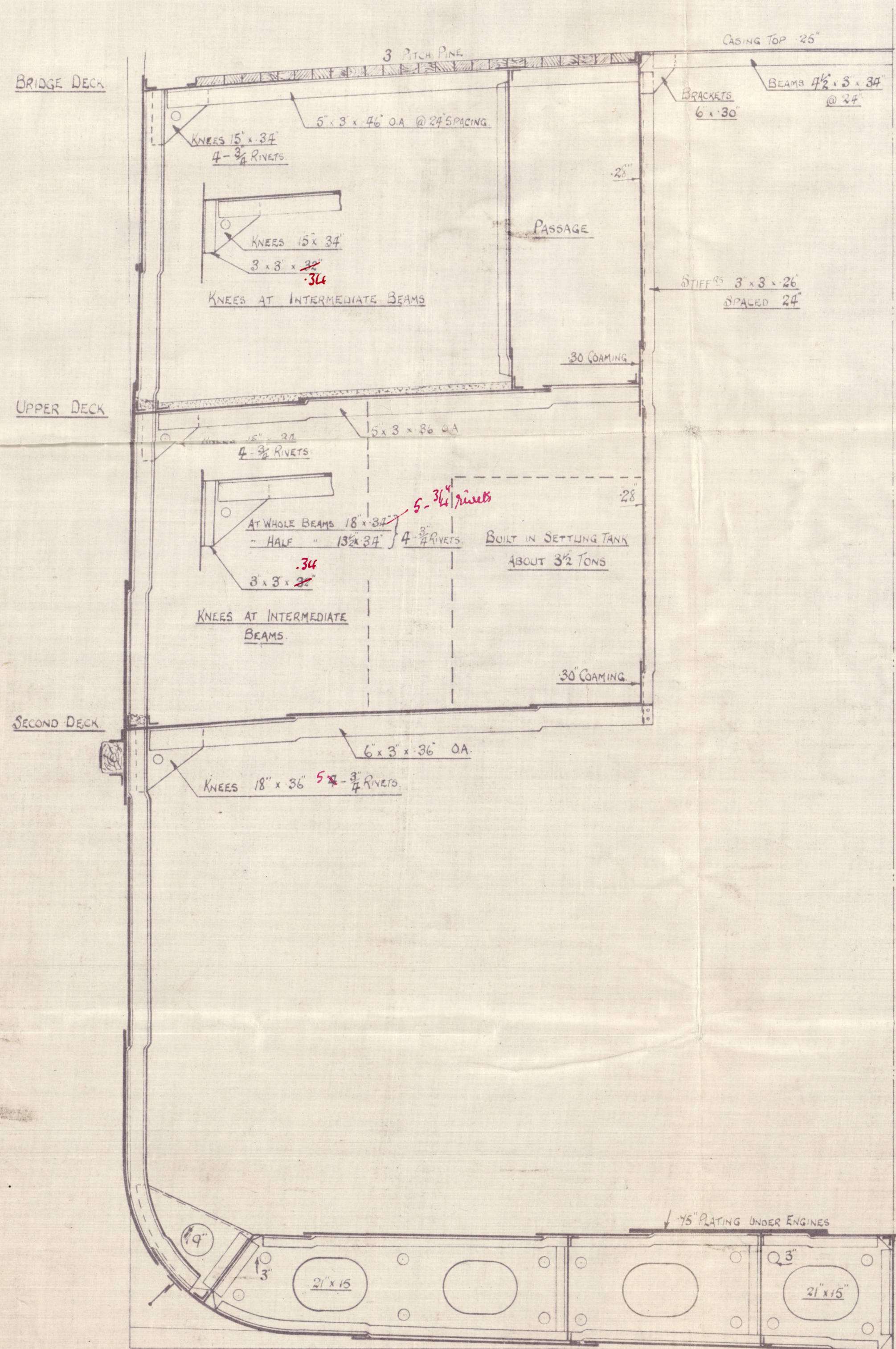
## EQUIPMENT.

$L(B+D)$	=	14210
<u>BRIDGE HOUSE</u> 70 x 7.5 x 3½	=	<u>394</u>
	=	<u>14604</u>
2 ANCHORS 30½ CWT. EACH STOCKLESS }	COLLECTIVE WT	87 CWT.
1 " 26 "		
1 STREAM ANCHOR 7½ CWT. EX STOCK		
240 FATH. 1½" STUD CHAIN CABLE		
75 " 1" STREAM "		
90 " ¾" STEEL WIRE TOWLINE }		
2 @ 90 " 2½" HAWERS }	OWNERS REQUIREMENTS.	
2 @ 90 " 5 MANILLA		

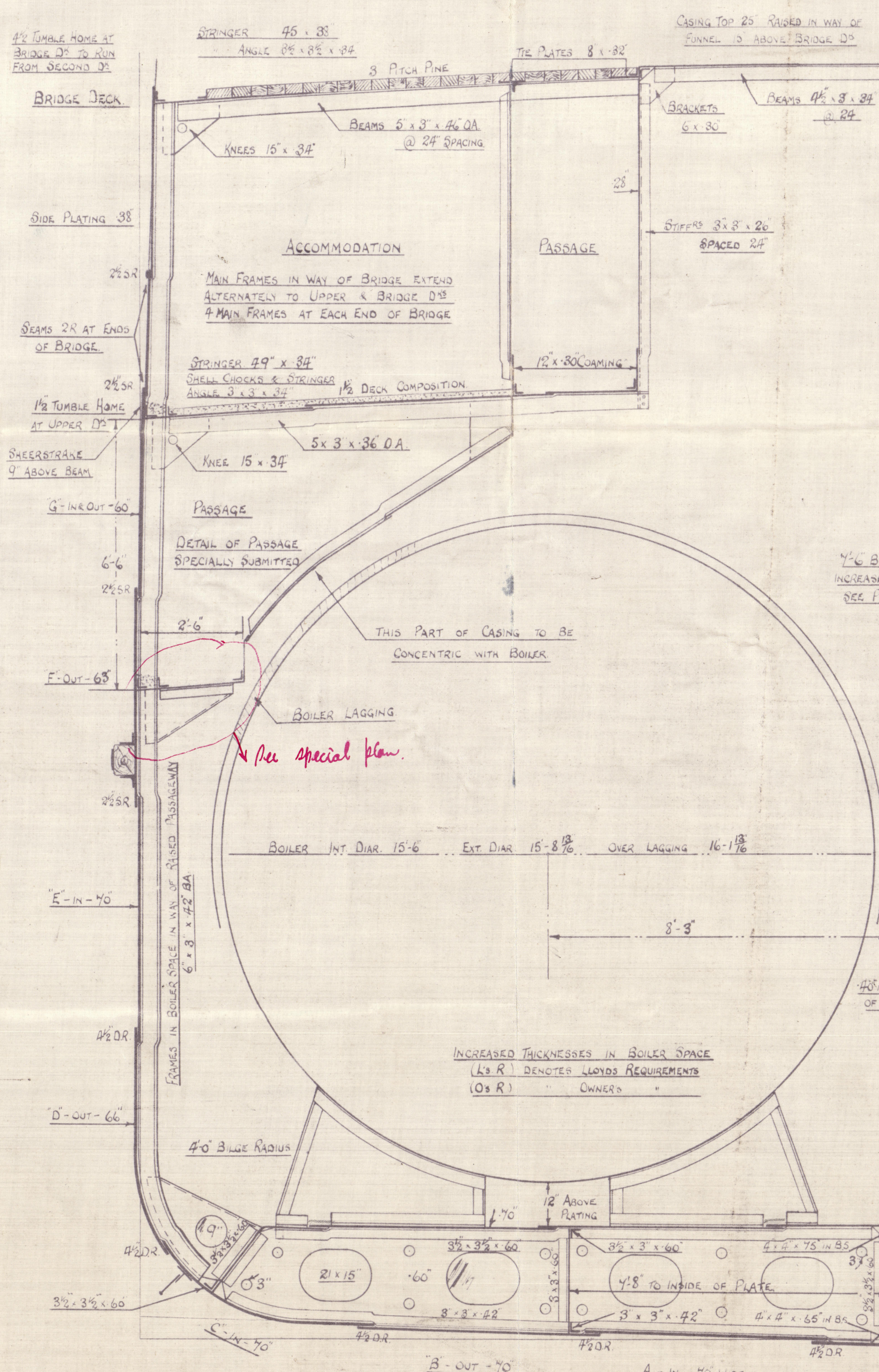
## RIVETING.

SHELL BUTTS -	KEEL - TREBLE RIVETED OVERLAPS (3R)
	BOTTOM PLATING TO UPPER TURN OF BULGE - 3R OVERLAPS TO 2R.
	SIDE " FROM " - 3R OVERLAPS TO 2R
	SHEERSTRAKE & STRAKE BELOW - 3R OVERLAPS TO 2R WHERE NOT EXCEEDING 1/2"
	BRIDGE SIDE PLATING - 2R OVERLAPS
SHELL DEAMS -	KEEL PLATE - DOUBLE RIVETED DEAMS (2R)
	BOTTOM PLATING TO UPPER TURN OF BULGE - 2R
	SIDE " FROM " INCLUDING SHEERSTRAKE - 1R
	BRIDGE SIDE PLATING SEAMS AT ENDS - 2R
DECK BUTTS -	UPPER D <sup>o</sup> STRINGER - 2R OVERLAPS
	" " PLATING - 2R OVERLAPS TO 1R.
	SECOND D <sup>o</sup> STRINGER - 2R OVERLAPS
	" PLATING - 2R OVERLAPS TO 1R
DECK BEAMS -	BRIDGE D <sup>o</sup> STRINGER & TIE PLATES - 2R OVERLAPS
	UPPER D <sup>o</sup> SEAMS - 1R
	SECOND " - 1R
DOUBLE BOTTOM -	BUTTS OF CENTRE STRAKE - 2R OVERLAPS
	MARGIN PLATE - 2R OVERLAPS
	TANK TOP PLATING - 2R OVERLAPS TO 1R
	SEAMS OF TANK TOP PLATING INCLUDING 1/2" STRAKE & MARGIN - 1R
	BUTTS & SEAMS OF TANK TOP PLATING IN WAY OF OIL - 2R
CENTRE GIRDER -	BUTTS OF OIL GIRDER - 3R OVERLAPS TO 2R WHERE NOT EXCEEDING 3/8"

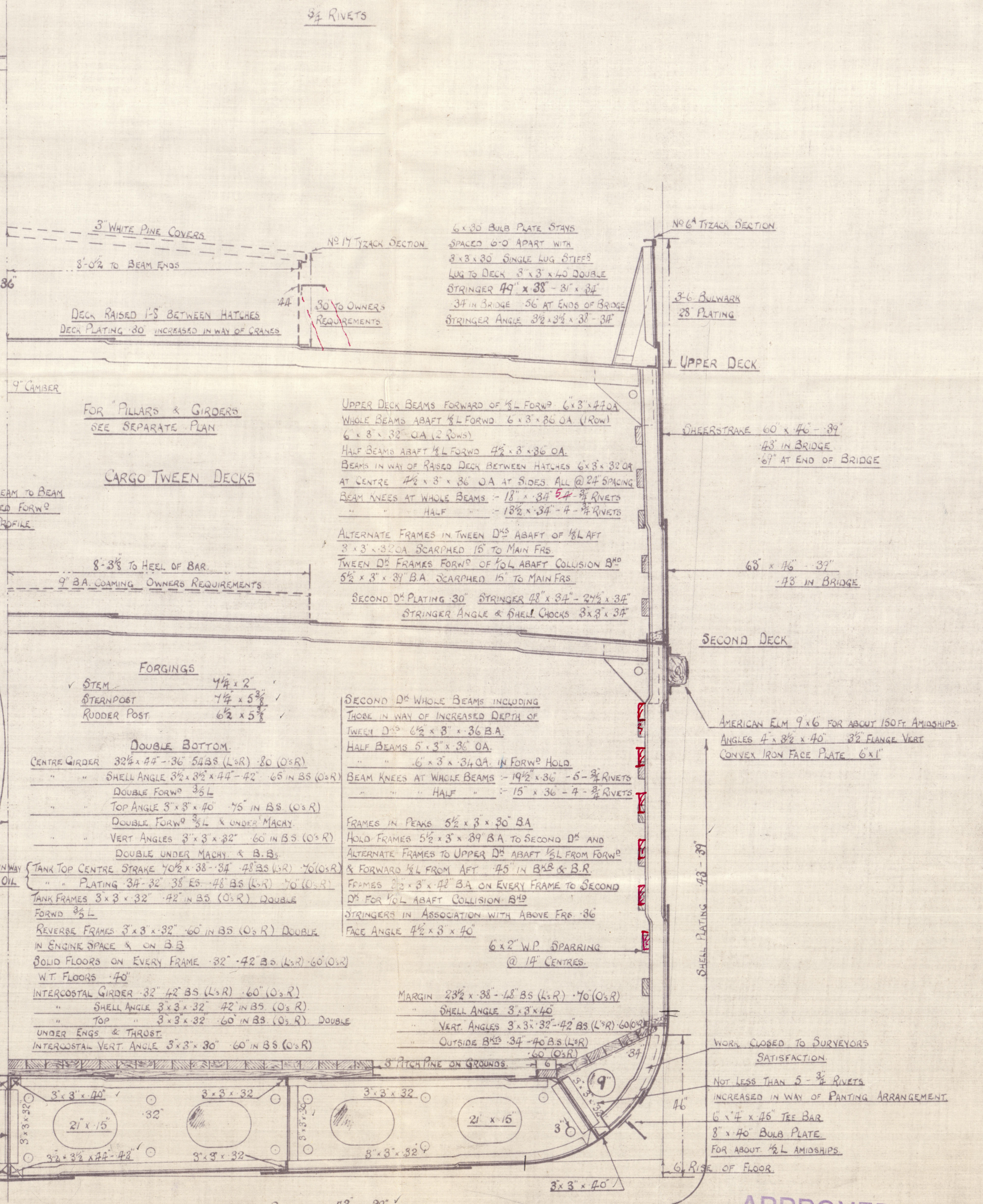
3/8" RIVETS



SECTION THRU ENGINE SPACE



SECTION THRU BOILER SPACE



SECTION IN HOLDS

The Requirements of Sect. 35 of the Rules to be complied with.

APPROVED  
LLOYDS REGISTER OF SHIPPING



Ayrshire Dockyard Co's 497

Midship Section.

RETAIN

Merel  
GLASGOW REPORT No 45026

W429-0094



© 2020

Lloyd's Register  
Foundation