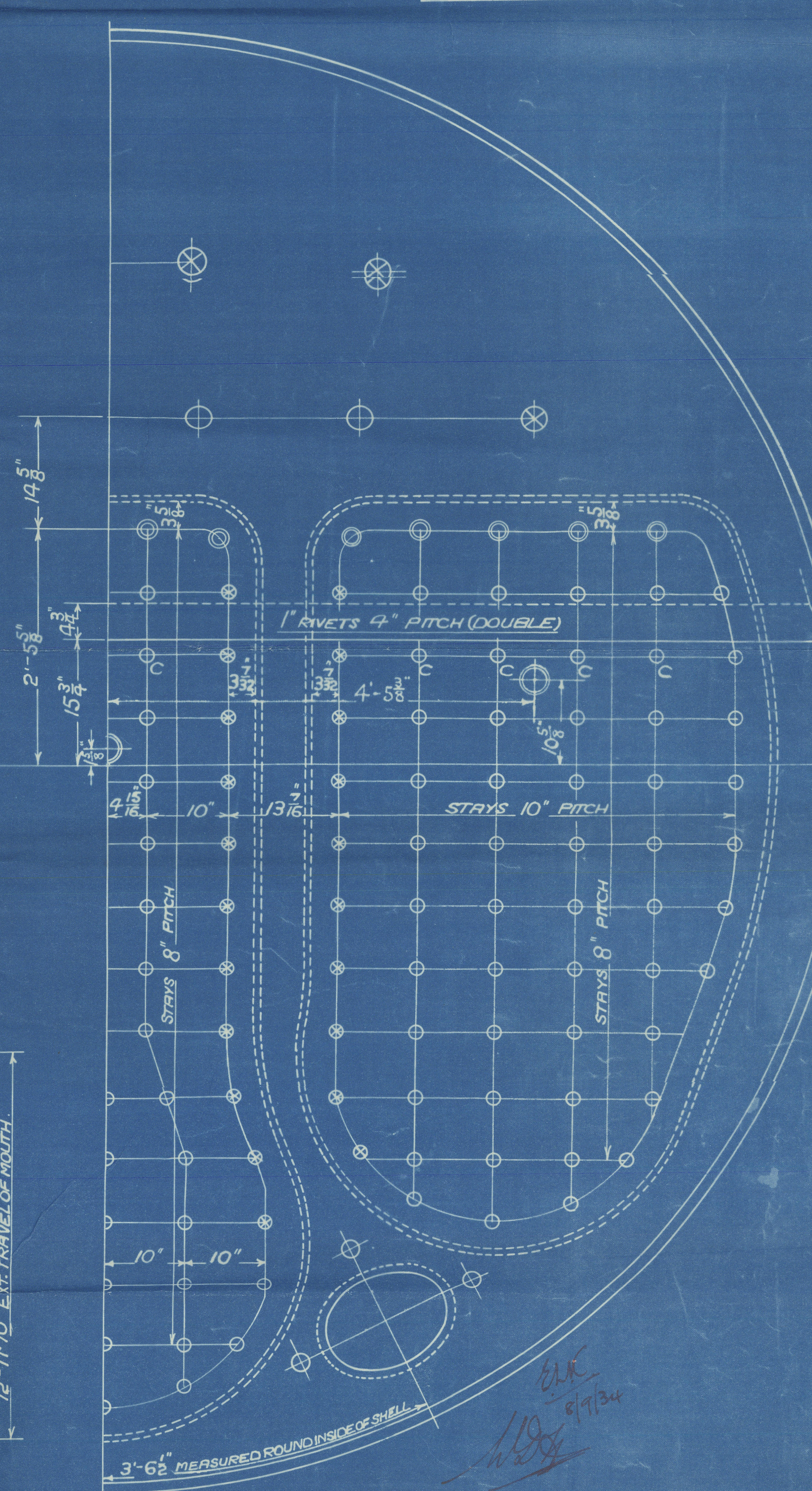
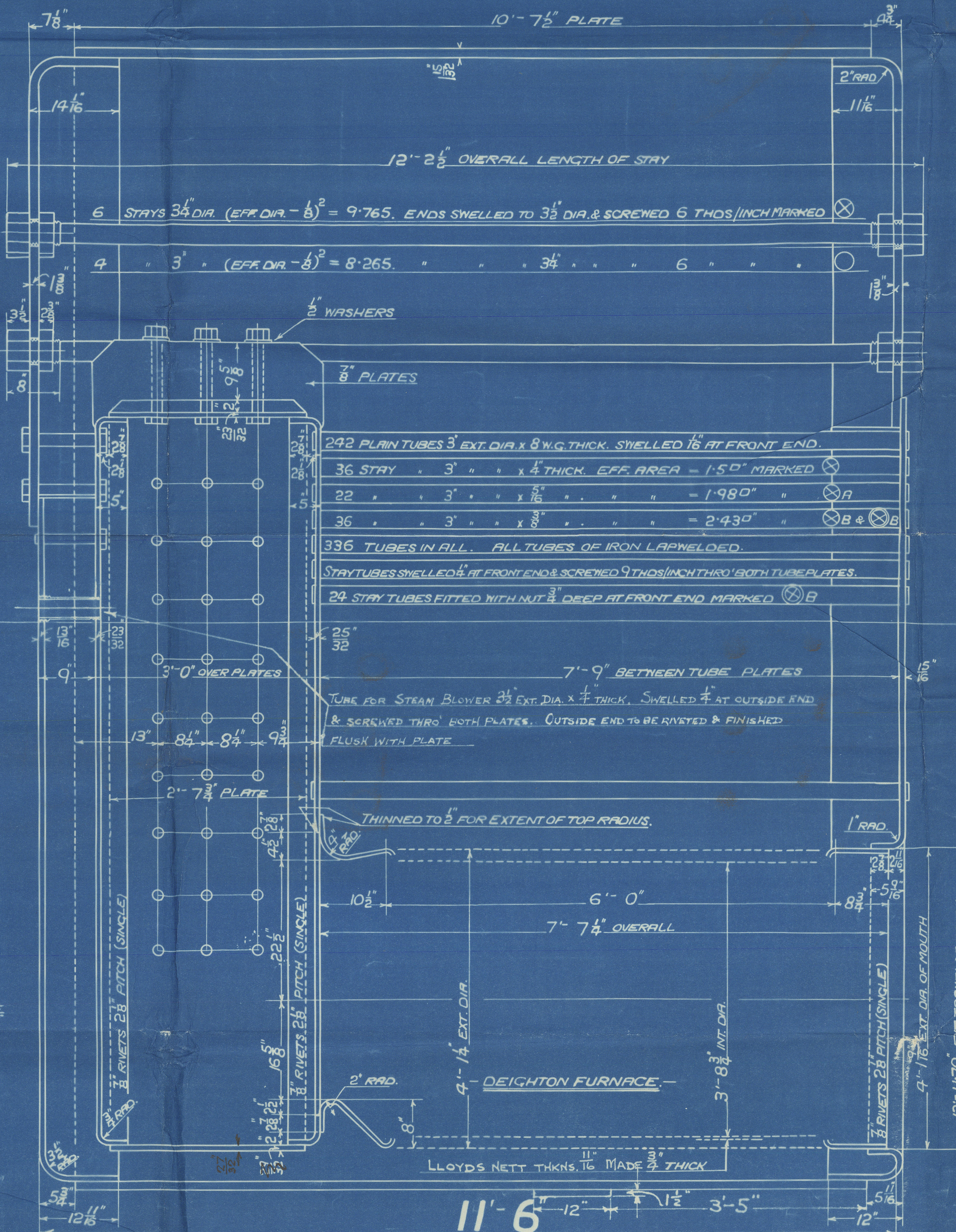
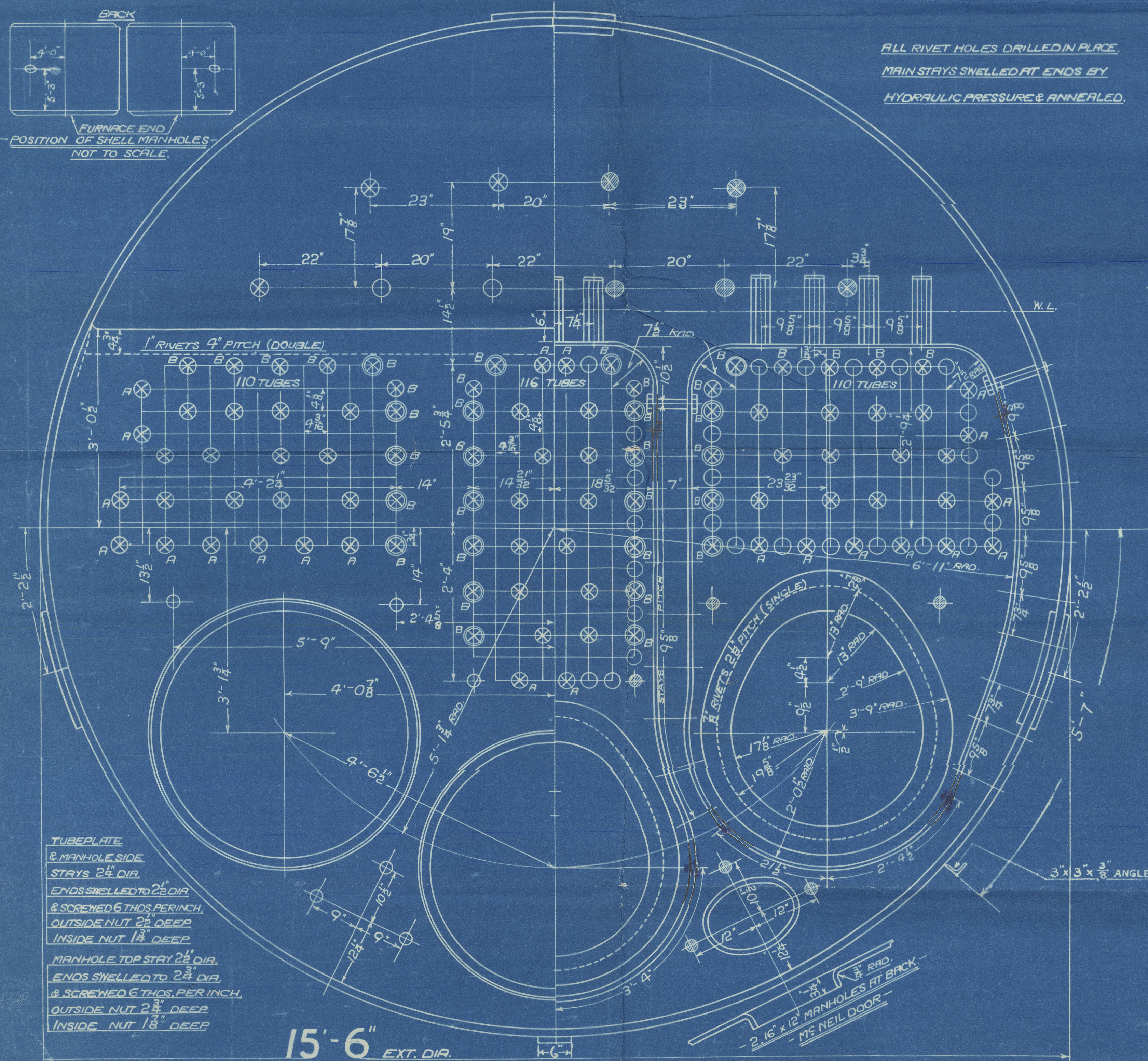
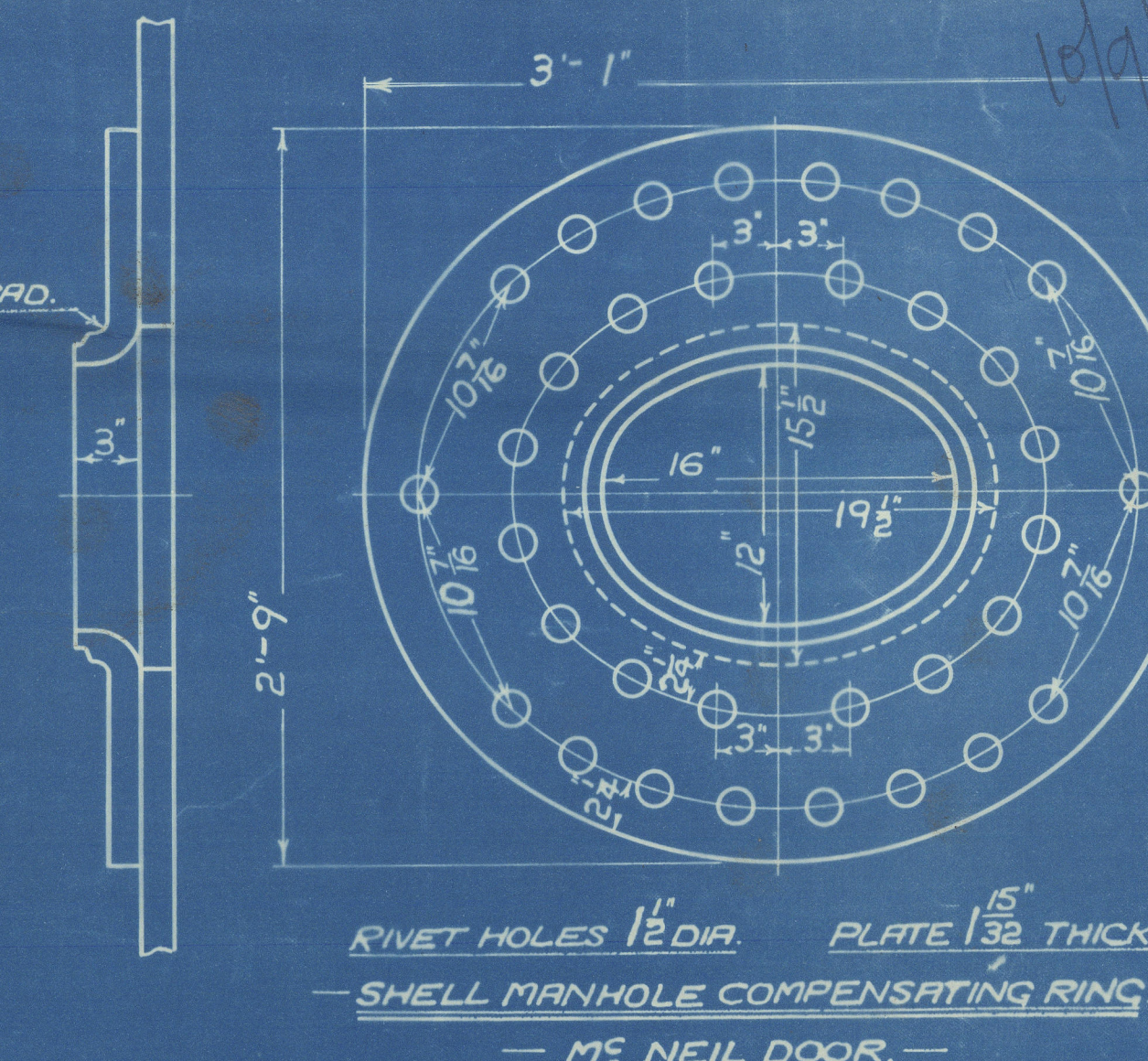
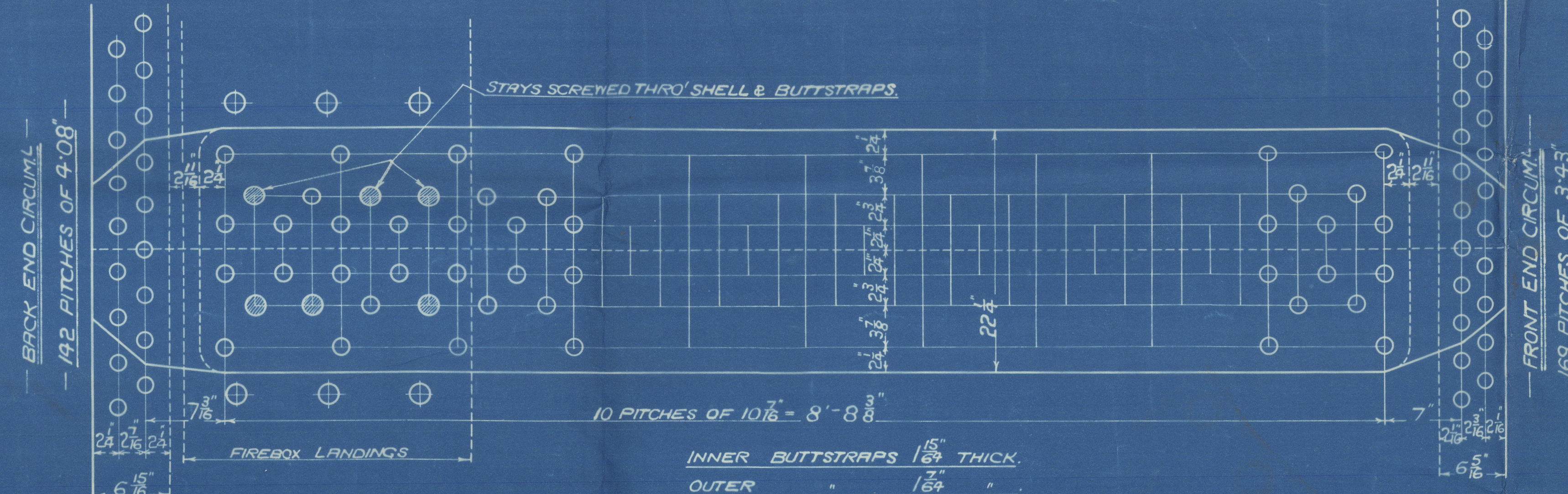


SURFACES	ONE BOILER	TWO BOILERS
TUBES	2046	4092
FIREBOX TOP & SIDES	153	306
BACK	84	168
TUBE PLATE	56	112
FURNACES	161	322
TOTAL HEATING SURFACE	2500	5000
GRATE AREA	12.3	24.6
TUBE AREA	12.3	24.6
WATER	156	312
STEAM SPACE	480	960
GRATE AREA : HEATING SURFACE	1 : 203	1 : 203
TUBE	1 : 203	1 : 203
WATER	1 : 3.09	1 : 3.09
STEAM SPACE	1 : 9.53	1 : 9.53
% BOILER ABOVE FIREBOX	31.5	31.5
WEIGHT OF WATER	24 TONS	48 TONS

RIVETING	LONG	BACK END CIRC.	FRONT END CIRC.
RIVET HOLE DIA.	1 1/2"	1 1/2"	1 1/2"
PITCH	10 1/2"	4'-0 3/4"	3'-4 3/8"
% PLATE	85.6	63.2	60
% RIVET	85.74	46.8	46.8
% COMBINED	88.3		

LIMITS OF TENSILE STRENGTH & MATERIAL	24 TO 33 TONS	SIEMENS-MARTIN STEEL
SHELL BUTTSTRAPS	28	32
CIRCLERS	26	30
OTHER PLATES	26	30
FURNACES	26	30
MAIN STAYS	26	32
RIVET BARS	26	30
SCREWED STAYS	21 1/2 TONS	IRON



MAIN BOILER

TWO OFF FOR EACH CONT NO

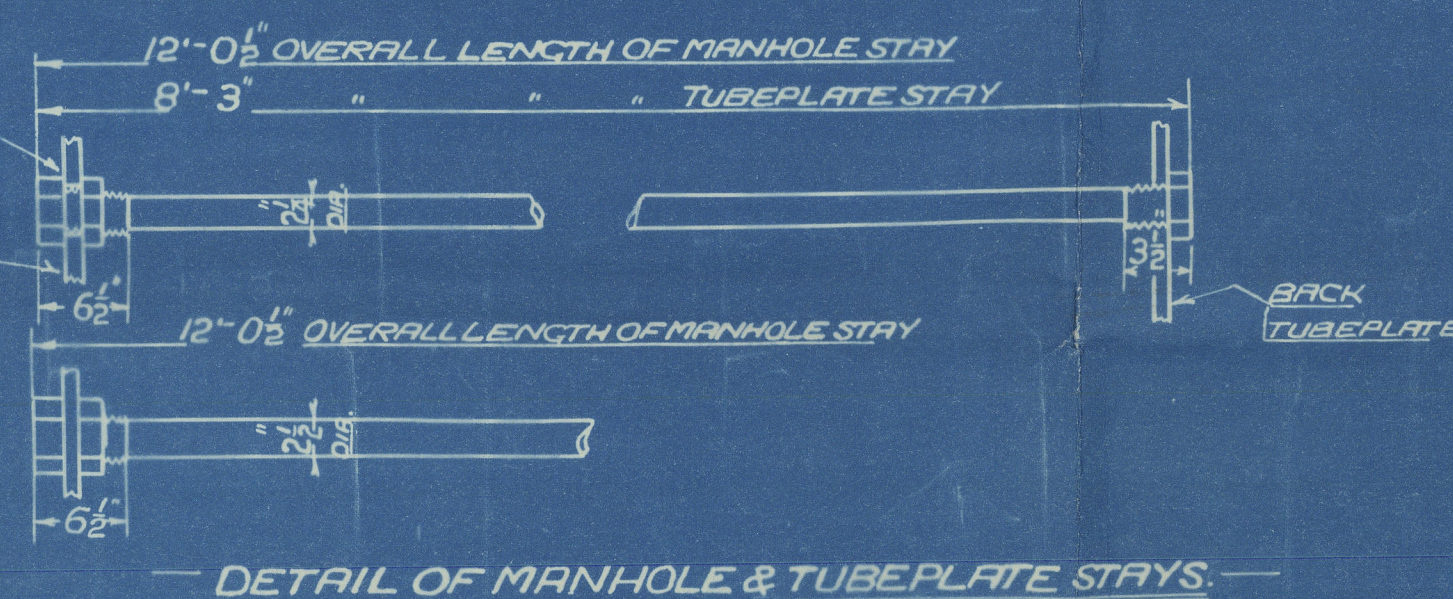
CONTS NO 942-943-945-946-947

WORKING PRESSURE 220 LBS. PER SQ. INCH
TEST 380

TO PASS LLOYDS SURVEY
SCALES: 1' & 1 1/2" = ONE FOOT

POSITION	MARK	DIA.	SCREWED	DIA. TO LLOYDS RULES
BACK, TOP & SIDES	0	1 1/8"	2-585	9
" WIDE SPACE	0	2"	3-003	9
" TOP ROW	0	2 1/4"	3-932	9

ALL FIREBOX STAYS SCREWED THRO' BOTH PLATES & NUT FITTED AT EACH END EXCEPT STAYS FROM FIREBOX TO SHELL & STAYS MARKED 'C' IN BACK BOTTOM END WHICH PROJECT & ARE CHALKED. ALL 1 1/8" & 2" NUTS 1" DEEP EXCEPT ON GIRDER TOPS WHERE THE OUTSIDE NUTS ARE 1 1/2" DEEP. ALL 2 1/4" NUTS 1 1/2" DEEP.



0738072
TRACED 9TH SEP 1936
W43-032

GLASGOW

DAVID ROWAN & CO. LD.

(2) BOILERS N^o 972

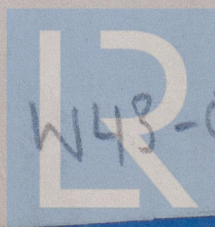
WP - 220 LBS

DUPLICATE OF N^o 942

except specimen wrapper
plate now fitted

Harpagon
GLASGOW REPORT No. 55721

9th Feb. 1997.



© 2020

W48-0132

Lloyd's Register
Foundation