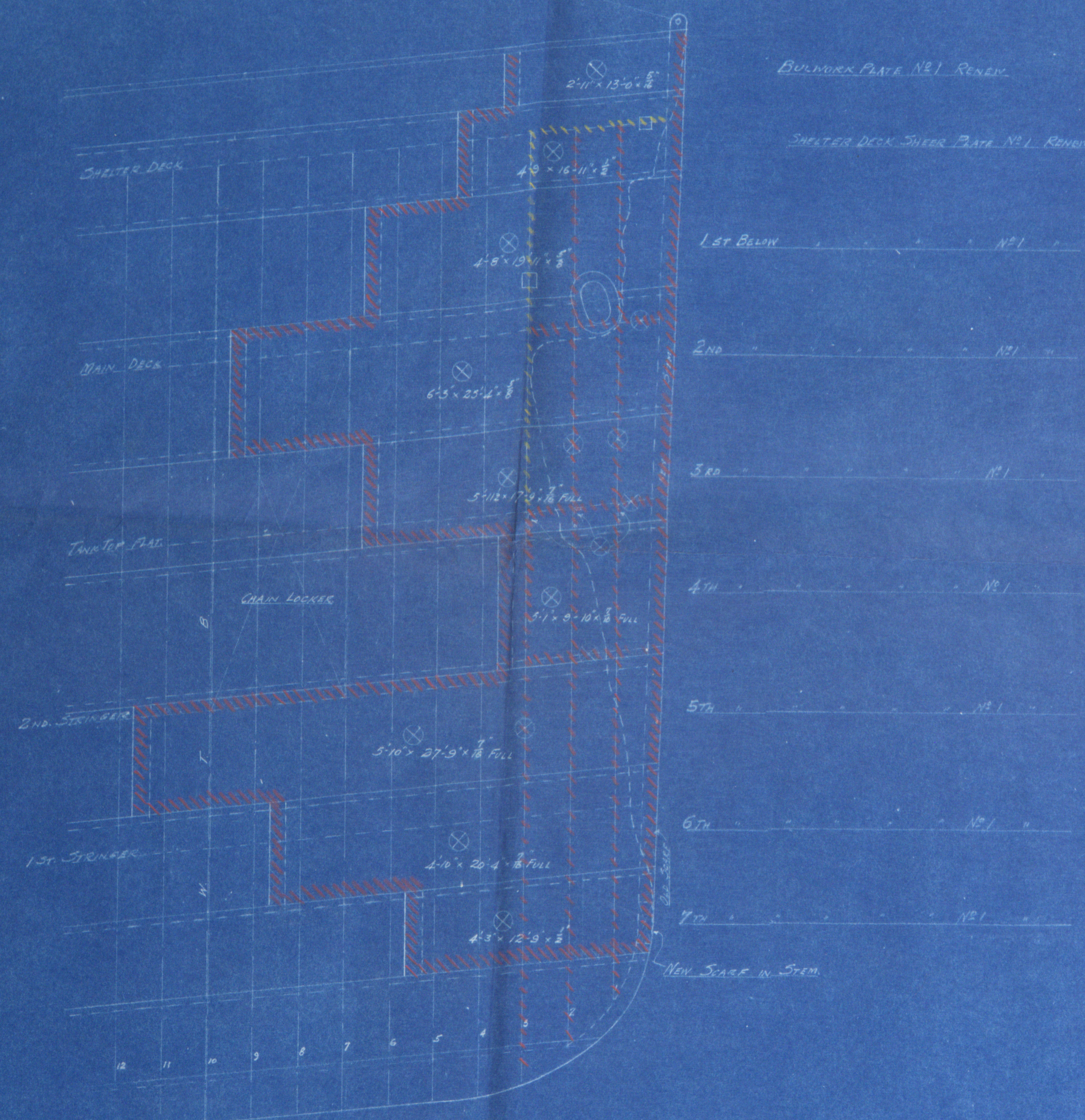
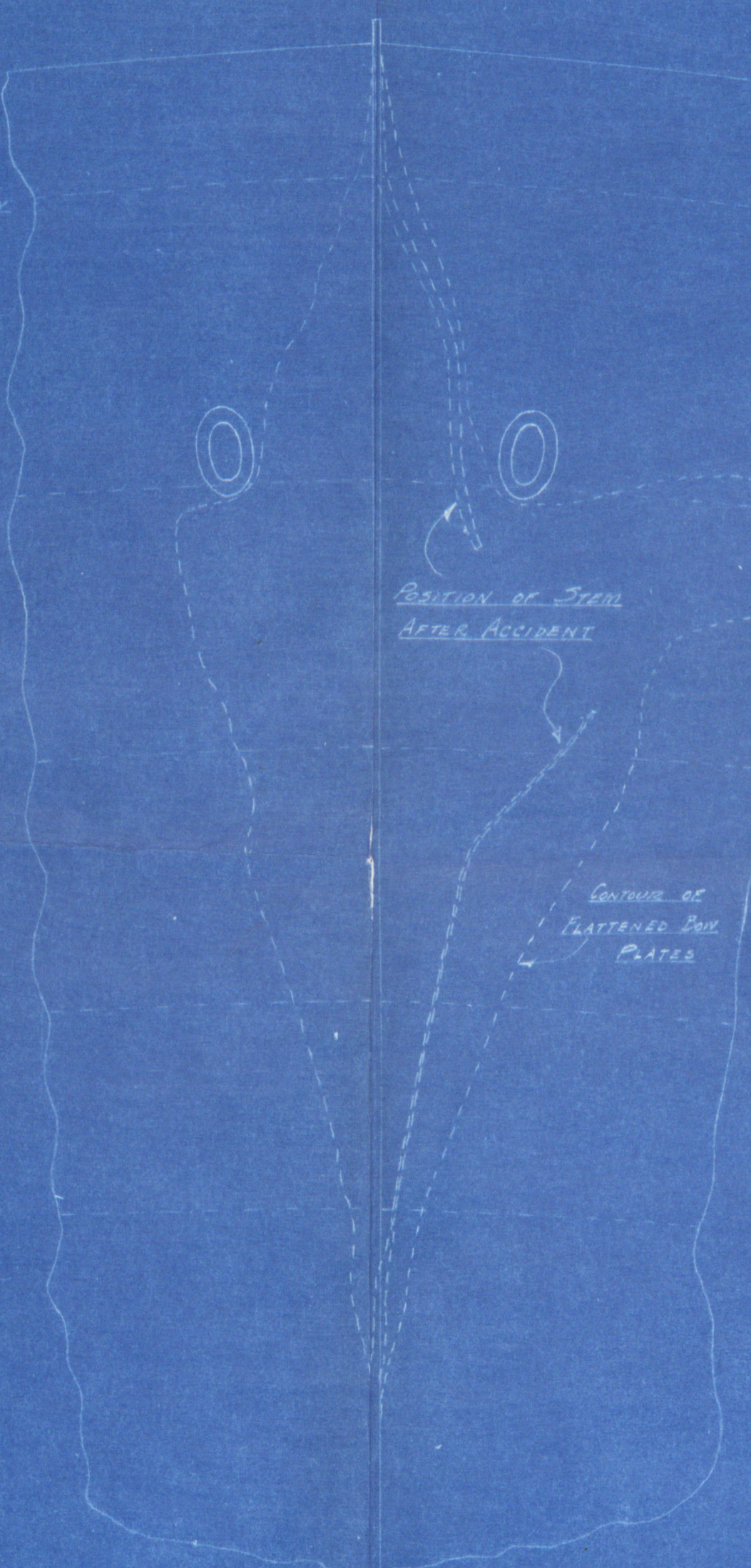


STARBOARD		
FRAME NO. 1	RENEW FULL LENGTH	APPROX. LENGTH 30'-0"
2		
3	TANK TOP TO KEEL	
3	O.F.R. SHEETER DECK TO TANK TOP	16'-10"

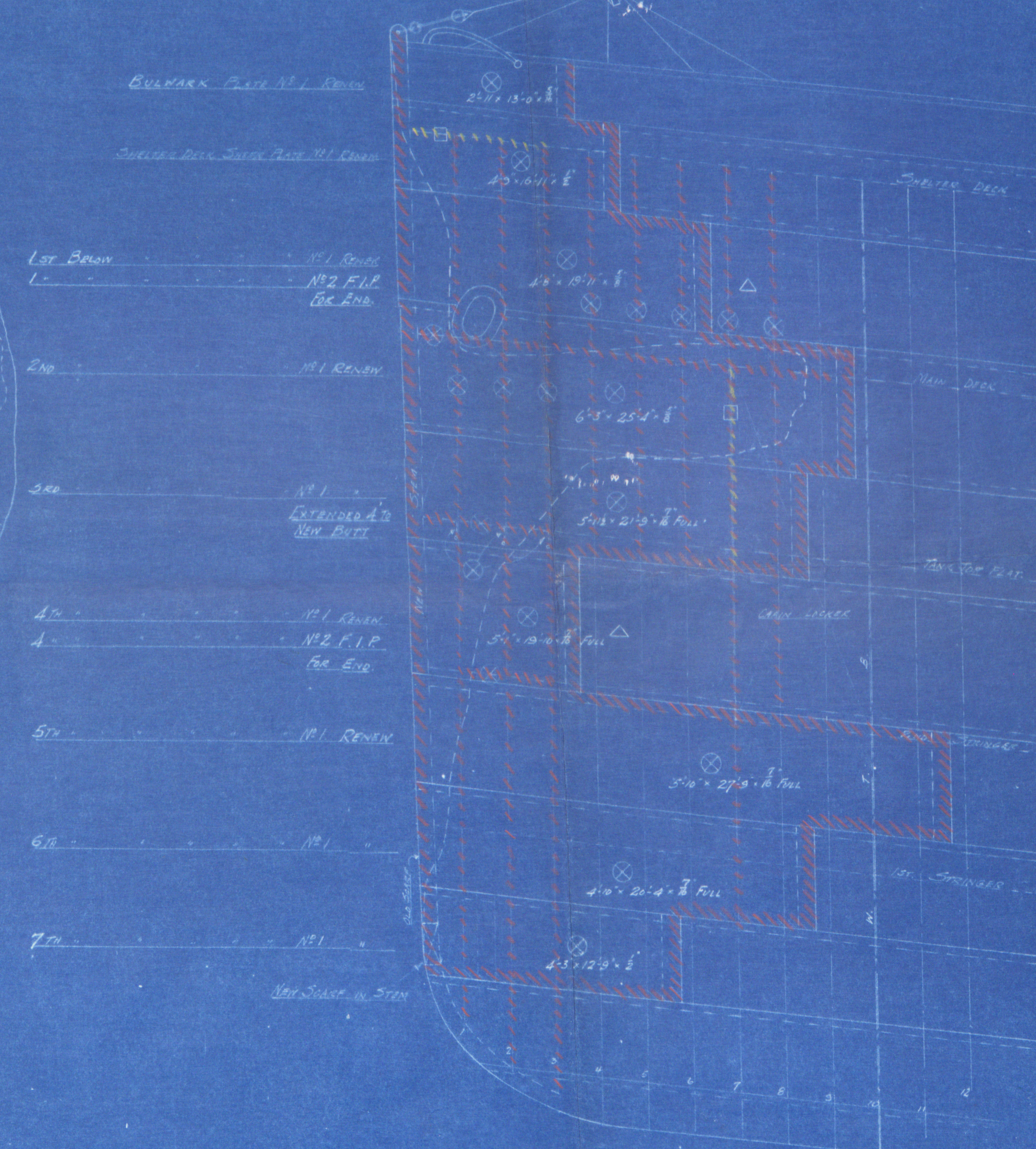


STARBOARD SIDE VIEW SHOWING EXTENSION OF DAMAGE TO PLATING.



VIEW SHOWING STEM BROKEN & BENT TO PORT SIDE

PORT		
FRAME NO. 1	RENEW FULL LENGTH	APPROX. LENGTH 30'-0"
2		
3		
4	SHEETER DECK TO TANK TOP	16'-10"
5		
6		
7	1ST STRINGER	APPROX. LENGTH 30'-0"
8	2ND	23'-6"



PORT SIDE VIEW SHOWING EXTENSION OF DAMAGE TO PLATING.

REPAIRS TO DECK PLATING STRINGER & BULKHEADS
 SHEETER DECK - BREAST PLATE O.F.R. WATER WAY BAR O.F.R.
 MAIN DECK - BREAST PLATE & NO. 1 BUT STRINGER PLATE RENEWED IN ONE PIECE
 BUTT OF FORWARD BATH EXTENDED 5'-0"
 TANK TOP - BREAST PLATE RENEWED WATER WAY BAR RENEWED
 BEAM 1 RENEW
 2
 3
 2ND STRINGER - BREAST PLATE RENEWED
 CENTRE SHEETER PLATE RENEWED
 CHAIN LOCKER BULKHEAD - PORT SIDE PLATE O.F.R.

LEGEND
 ⊗ = RENEW - SHOWN IN RED HATCHING
 □ = O.F.R. FAIRED & RETURNED - SHOWN IN YELLOW HATCHING
 △ = FAIRED IN PLACE

VICTORIA MACHINERY DEPOT VICTORIA, B. C.	
PLAN SHOWING EXTENSION OF DAMAGE TO M.S. KING EDWARD SUSTAINED IN COLLISION WITH T.S.S. NIAGARA JULY 17TH 1935	
DRAWN BY GCH	SCALE - 1" = 1'
TRACED BY	CHECKED BY
DATE July 30th 1935	DRAWING No. 786-D

RETAIN



© 2019

Lloyd's Register
Foundation

GORE BLUE PRINT CO.
214 CENTRAL BLDG. 620 VIEW ST.



© 2019

Lloyd's Register
Foundation

Mr. King Egbert:

Va. rept. No 4011,

Plan of damage repairs.

RETAIN

W635-0288



© 2010

Lloyd's Register
Foundation