

N^o. 1415. MIDSHIP SECTION.

SCALE 1/2" = 1 FOOT.

DIMENSIONS :- LENGTH B.P. 283'-0". BREADTH MLD. 41'-10". DEPTH MLD. 20'-4" TO UPPER DECK.

CLASS + 100 A.I. LLOYDS.

EQUIPMENT N^o.

L x (B + D)	=	14591
RAISED QUARTER DECK 92.5' x 4'	=	370
POOP BRIDGE & FORECASTLE 98.5' x 7.5' x 7.5'	=	554
HOUSES 52.5' x 7.5' x 5'	=	197
		18712

EQUIPMENT.

2 BOWER ANCHORS	38 3/4 CWTs. EACH, STOCKLESS.
1 " "	32 1/2 " " "
1 STREAM " "	10 " EX. STOCK.
240 FATHOMS	1 1/16" STUD CHAIN CABLE.
75 " "	4 1/2" STEEL WIRE.
90 " "	4" STEEL WIRE TOWLINE.
2 @ 90 "	2 1/2" STEEL WIRE HAWSERS.
2 @ 90 "	2 1/4 " " " WARPS.

NUMERALS.

L =	283'-0"
B =	41'-10"
D =	20'-4"
L x D =	5453
L x (B + D) =	14591
L/D TO UPPER DECK =	13.92
L/D TO RAISED QUARTER DECK =	11.63
L/D TO BRIDGE DECK =	10.16

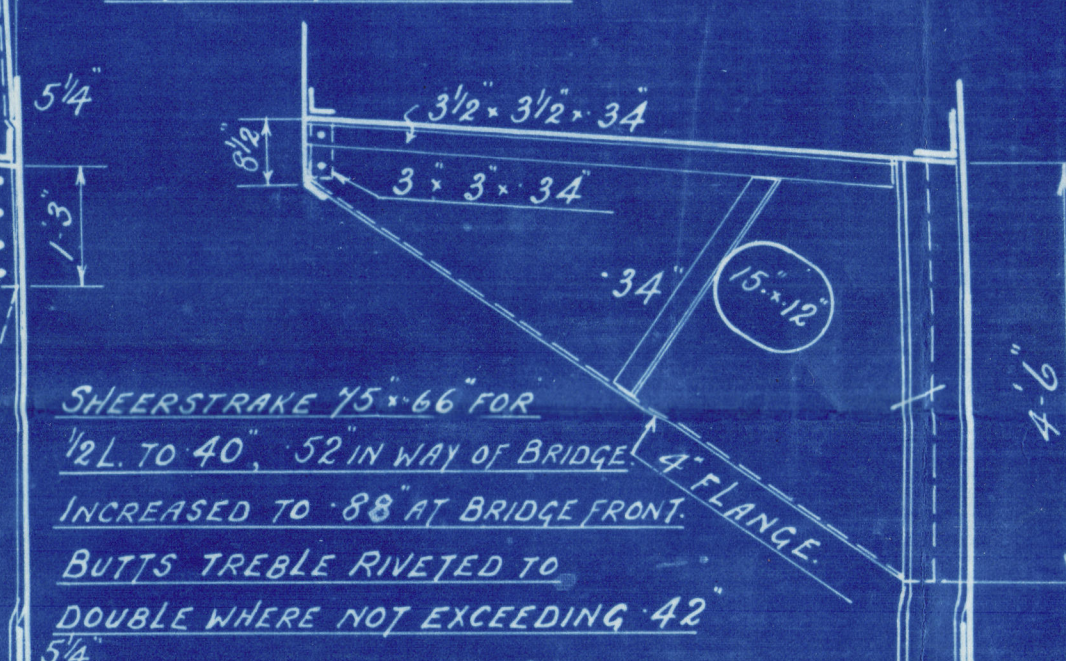
2 FOR FRAMING (UPPER DECK) = 16.47
(R. Q. DECK) = 20.48

2 TO UPPER DECK WITH NORMAL
BEAM KNEE & NORMAL FRAME KNEE = 14.17
BEAM KNEE ABOVE NORMAL 2 3/4
FRAME " " 1-2 1-4 1/2 = 7.0
16.47

BRIDGE SIDE PLATING .46"
BUTTS TREBLE RIVETED.

POOP SIDE PLATING .32"
BUTTS SINGLE RIVETED.

FORECASTLE SIDE PLATING .34"
BUTTS SINGLE RIVETED.



BRACKETS IN LIEU OF PILLARS
AT HATCH SIDES, AT UPPER &
R.Q. DECKS WHERE SHOWN ON PROFILE

STRAKE BELOW SHEER 75' x 56' FOR
1/2 L TO 40' AT END. 52' IN WAY OF BRIDGE.
BUTTS TREBLE RIVETED TO
DOUBLE WHERE NOT EXCEEDING 42'

75' x 52' FOR 1/2 L TO 40' AT ENDS.
BUTTS TREBLE RIVETED TO DOUBLE
WHERE NOT EXCEEDING 42'

12-3/4 RIVETS.
BILGE KEEL 9' x 40' BULB.
3 1/2 x 3 1/2 x 40 ANGLE.

BRIDGE DECK STRINGER PLATE 44' x 38"
" " " ANGLE 3 1/2 x 3 1/2 x 38"
POOP " " ANGLE 3 x 3 x 30"
FORECASTLE " " ANGLE 3 x 3 x 32"

BRIDGE DECK PLATING ABREAST OPENINGS .34"
" " " WITHIN LINE OF " .30"
POOP DECK " .26" WHERE SHEATHED, 30" UNSHEATHED.
FORECASTLE " .26" SHEATHED.

BRIDGE DECK

BEAMS 6' x 3' x 43' O.A. AT EVERY FRAME KNEES 18' x 13' x 37' 5 3/4 RIVS.
AND 5 1/2' x 3' x 43' B.A. N.B.S.

RAISED QUARTER DECK

ENGINE & BOILER CASING

UPPER DECK PLATING IN BRIDGE .30"
" " " WITHIN LINE OF HATCHES .34" IN WELL.
" " " AT ENDS .30"

UPPER DECK STRINGER IN BRIDGE 45' x 34"
" " " ANGLE 3 1/2 x 3 1/2 x 34"
" " " IN WELL 82' x 94' FOR
1/2 L TO 34' x 36' AT END.
STRINGER ANGLE IN WELL 6' x 6' x 66' FOR
1/2 L TO 44' 3' x 3' x 34'

UPPER DECK 10" CAMBER

3-3/4 RIVETS.

THROUGH BEAMS IN BRIDGE 8 1/2' x 3' x 40' B.A. KNEES 25 1/2' x 19' x 42' 6' x 1/8 RIVETS.
HALF " " 6' x 3' x 37' " N.B.S. 24 1/2' x 24 1/2' x 42' 5' x 1/8 "
" " " WELL 5' x 3 1/2' x 35' O.A. 24 1/2' x 24 1/2' x 42' 5' x 1/8 RIVS.

INCREASED
IN PAINTING AREA.

FRAMES SPACED 30" APART, 24" FORWARD OF 3/5 L TO
COLLISION BULKHEAD, 24" IN PEAKS.
MAIN FRAMES 8' x 3 1/2' x 46' B.A. N.B.S.
INCREASED .06" IN PERMANENT BUNKERS.
PEAK FRAMES 5 1/2' x 3' x 41' B.A. ALL TO POOP & FORECASTLE DECKS.
BRIDGE FRAMES 5' x 3' x 35' B.A. N.B.S. ON EVERY FRAME
SCARPHED TO MAIN FRAMES.

SOLID FLOORS ON EVERY FRAME .37' x 45' B.R.
SIDE GIRDERS .33' x 43' B.R.
REVERSE FRAMES ON FLOORS 3' x 3' x 33' x 43' B.R.
DOUBLE UNDER ENGINES, THRUST & BOILER BEARERS.
FRAMES IN BOTTOM 3' x 3' x 33'
5' x 5' x 33' SINGLE FORWARD OF 3/5 L.
FLOORS FORMING TANK ENDS INCREASED .08" (EXCEPT
IN B.R.) & STIFFENED WITH 3' x 3' x 33' ANGLES 30" APART.
SIDE GIRDER VERTICAL ANGLES 3' x 3' x 31' x 41' B.R.
" " TOP " 3' x 3' x 33' x 43' B.R.
" " SHELL " 3' x 3' x 33'

ADDITIONAL GIRDER UNDER ENGINES & THRUST.
INCREASED IN
PAINTING AREA

TANK TOP CENTRE STRAKE 44 1/2' x 39"
FOR 1/2 L TO 35' 51' B.R.
BUTTS DOUBLE RIVETED ALL FORE & AFT.
TANK TOP PLATING .37' FOR 1/2 L TO
35' 41' IN E.R. 51' B.R.
3-3/4 RIVETS.

2 1/2" W.W. CEILING ON TANK TOP IN HOLD.

CENTRE GIRDER (RULE 34 1/2' x 44' TO 36')
ARRANGED 38' x 40' FOR 1/2 L TO 33' 50' B.R.
BUTTS TREBLE WHERE OVER 38' TO DOUBLE.
KEEL ANGLE 6' x 6' x 45' FOR 1/2 L TO 43'
DOUBLE 3 1/2' x 3 1/2' x 43' FOR D OF 3/5 L.
CENTRE GIRDER TOP ANGLE 5' x 5' x 41'
FOR 1/2 L TO 40' AT ENDS. DOUBLE 3' x 3' x 41'
IN E.R. & 3' x 3' x 40' FORD OF 3/5 L.
CENTRE GIRDER VERTICALS 3' x 3' x 33'
43' B.R. 5' x 5' x 33' SINGLE UNDER
ENGINES & THRUST, 5' x 5' x 43' SINGLE
UNDER BOILER BEARERS.

2 1/2" W.W. CEILING ON TANK TOP IN HOLD.

MARGIN PLATE .42" IN HOLDS & E.R. 58" IN B.R.
" " 38" WIDE.
BUTTS DOUBLE RIVETED ALL FORE & AFT.
MARGIN ANGLE 3' x 3' x 41'
VERTICAL ANGLE 3' x 3' x 33' 43' IN B.R.
INCREASED IN PAINTING AREA.
TANK OUTSIDE KNEES .42" IN WAY OF R.Q. DECK.
40" IN WAY OF UPPER DECK, 50" IN B.R.

STRINGER PLATE 79 1/2' x 68"
FOR 1/2 L TO 58"
STRINGER ANGLE 6' x 6' x 57"
FOR 1/2 L TO 40' 3 1/2' x 3 1/2' x 40' 14" 3 1/2' x 3' x 36' 14" (IN WAY OF HATCHES & WINCH PL)

WINCH PLATFORM BETWEEN HATCHES, PLATING .32"

BEAMS 6' x 3' x 37 3/4" ON EVERY FRAME.

HATCH END BEAMS AS PER DECK PLAN.

HALF BEAMS 5' x 3 1/2' x 35' O.A.
BEAM KNEES 30' x 30' x 47' THROUGHOUT
6' x 1/8 RIVETS.

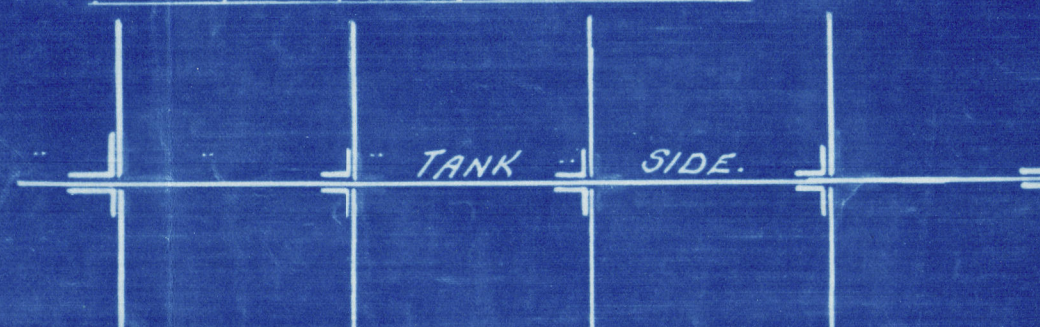
LARGE BRACKETS WHERE
SHOWN ON PROFILE.

SHEERSTRAKE 47 1/2' x 57' FOR 1/2 L TO 40'
INCREASED TO 80' AT BREAK.
BUTTS TREBLE RIVETED TO DOUBLE
WHERE NOT EXCEEDING 42"

STRAKE BELOW SHEERSTRAKE 75' x 52'
FOR 1/2 L TO 40'.
BUTTS TREBLE RIVETED TO DOUBLE
WHERE NOT EXCEEDING 42"

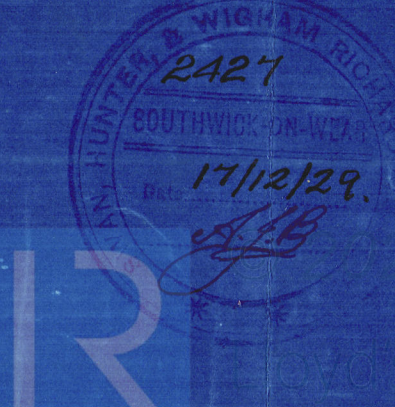
75' x 52' FOR 1/2 L TO 40' AT END.
BUTTS TREBLE RIVETED, TO DOUBLE
WHERE NOT EXCEEDING 42"

RULE, GUSSETS EVERY 4" IN WAY OF R.Q.D. 12-3/4 RIVETS.
PROPOSED SINGLE ATTACHMENT ANGLE TO
TANK SIDE & KNEE 6' x 6' x 45' EVERY 4" FRAME.
ALSO FOR 1/4 LENGTH FORWARD.



KEEL PLATE 44' x 58' FOR 3/5 L TO 54' AT ENDS.
BUTTS TREBLE RIVETED ALL FORE & AFT.

BOTTOM SHELL .53' FOR 1/2 L TO 40' AT ENDS.
BUTTS TREBLE RIVETED TO DOUBLE WHERE NOT EXCEEDING 42".
THREE STRAKES NEXT KEEL TO HAVE MIDSHIP THICKNESS
MAINTAINED FORWARD TO RULE POSITION OF COLLISION BULKHEAD.



W462-0106

SUNDERLAND.

Messrs. Swan, Hunter & Nigham Richardson
Ltd

1415

Midship Section

$\frac{5}{13}$ "England"

RETAIN

W462-0106



© 2020

Lloyd's Register
Foundation