

26/7/26

TOTAL HEATING SURFACE (3 BOILERS) = 7410 sq. ft.

SURVEYS:- LLOYDS & BOARD OF TRADE.

TENSILE STRENGTH OF MATERIALS.

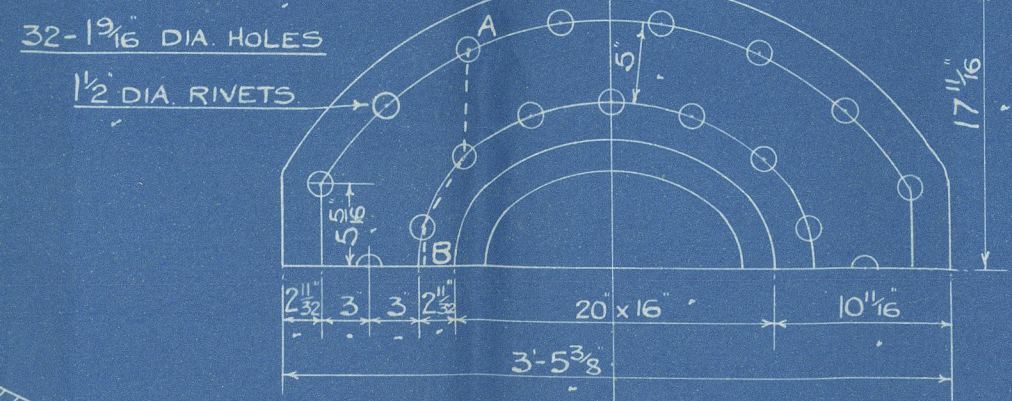
CYL. SHELL PLATES & BUTTSTRAPS	30 16 34 TONS/IN ²
CURDER PLATES	28 " 32 "
MANHOLE DOUBLING	27 " 30 "
ALL OTHER PLATES & FURNACES	26 " 30 "
LONG ⁺ STEEL STAYS	28 " 32 "
SCREWED STAY & RIVET BARS	26 " 30 "

WORKING PRESSURE 215 LBS/IN²

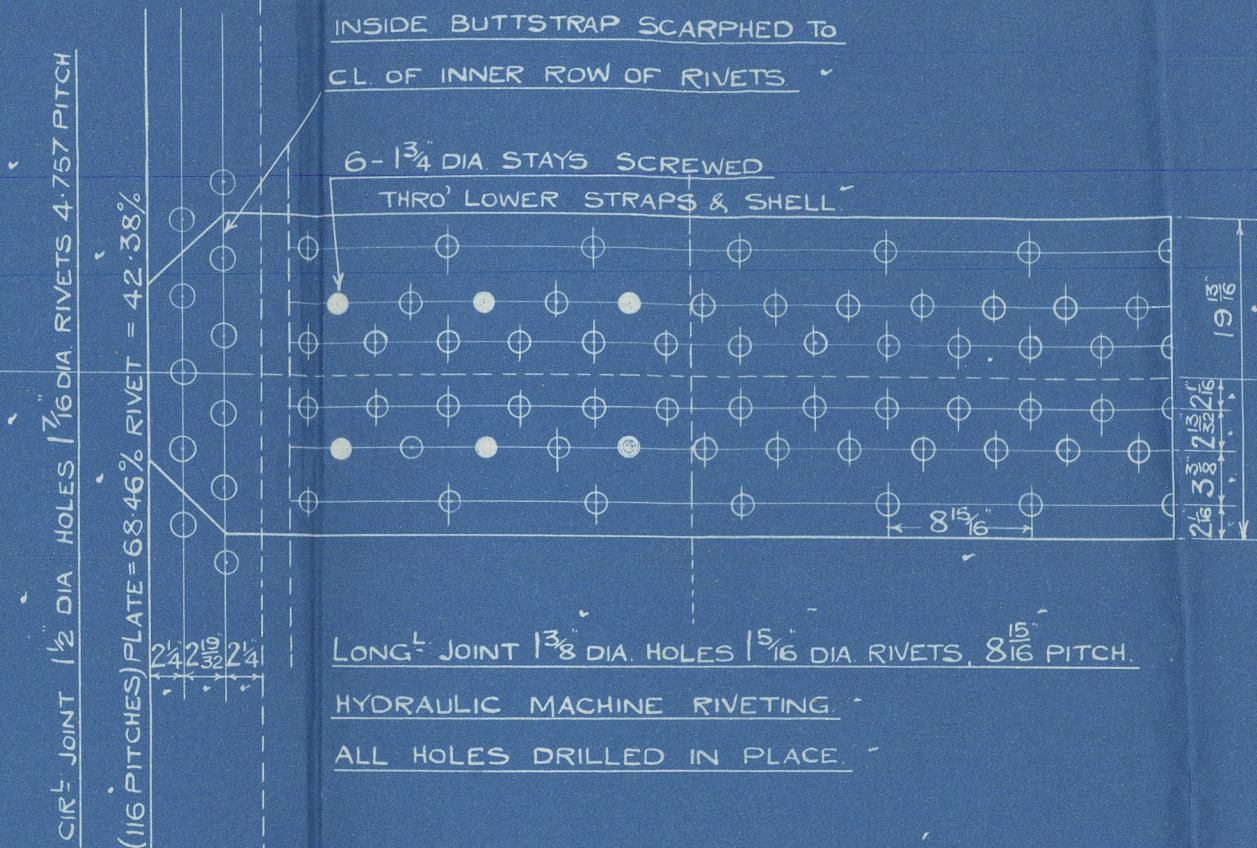
TEST " 373 "

- ALL PLATES OF STEEL
- " STAYS "
- " RIVETS "
- ALL TUBES OF IRON

SHELL BUTT ENDS TO BE
ELECTRICALLY WELDED

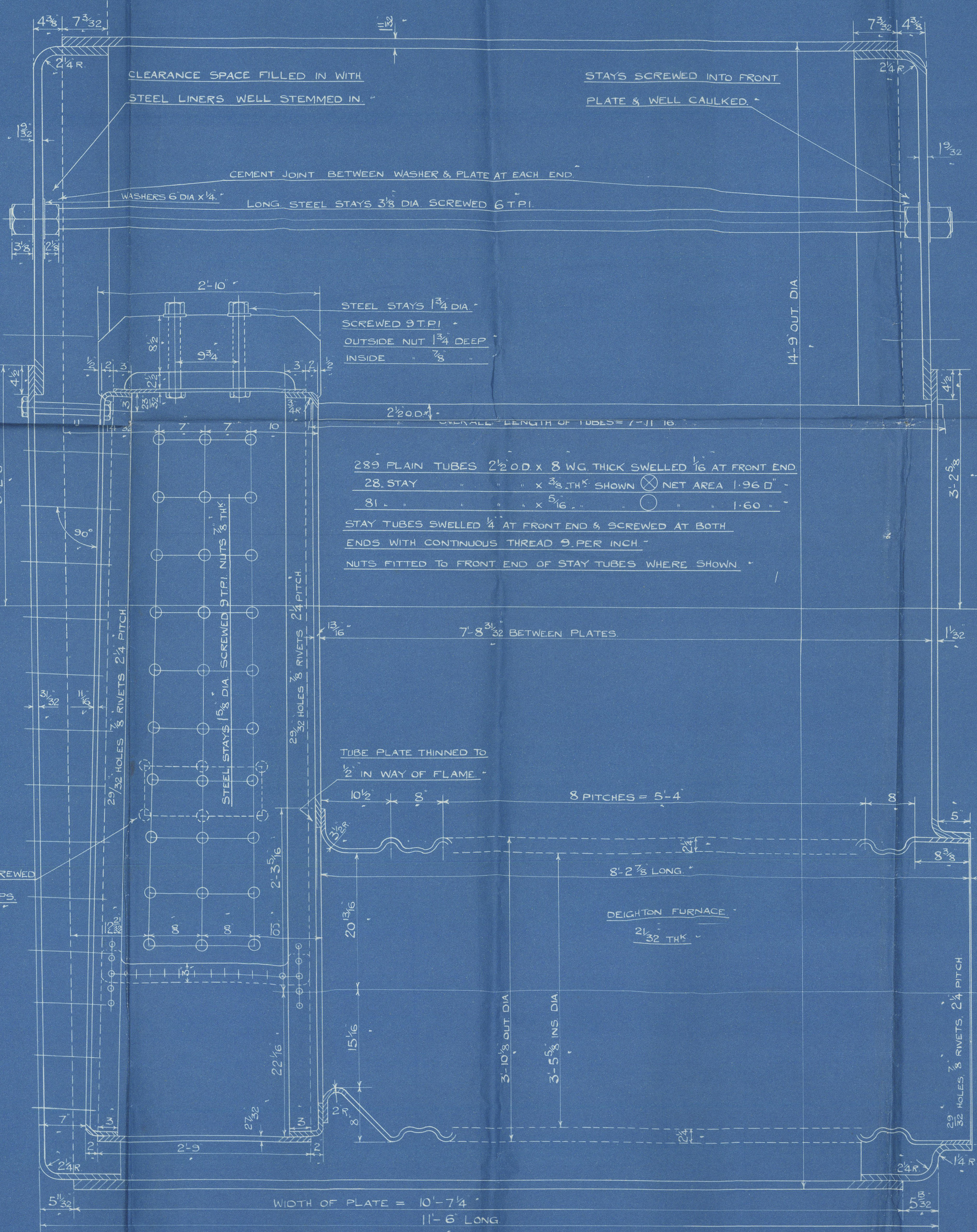
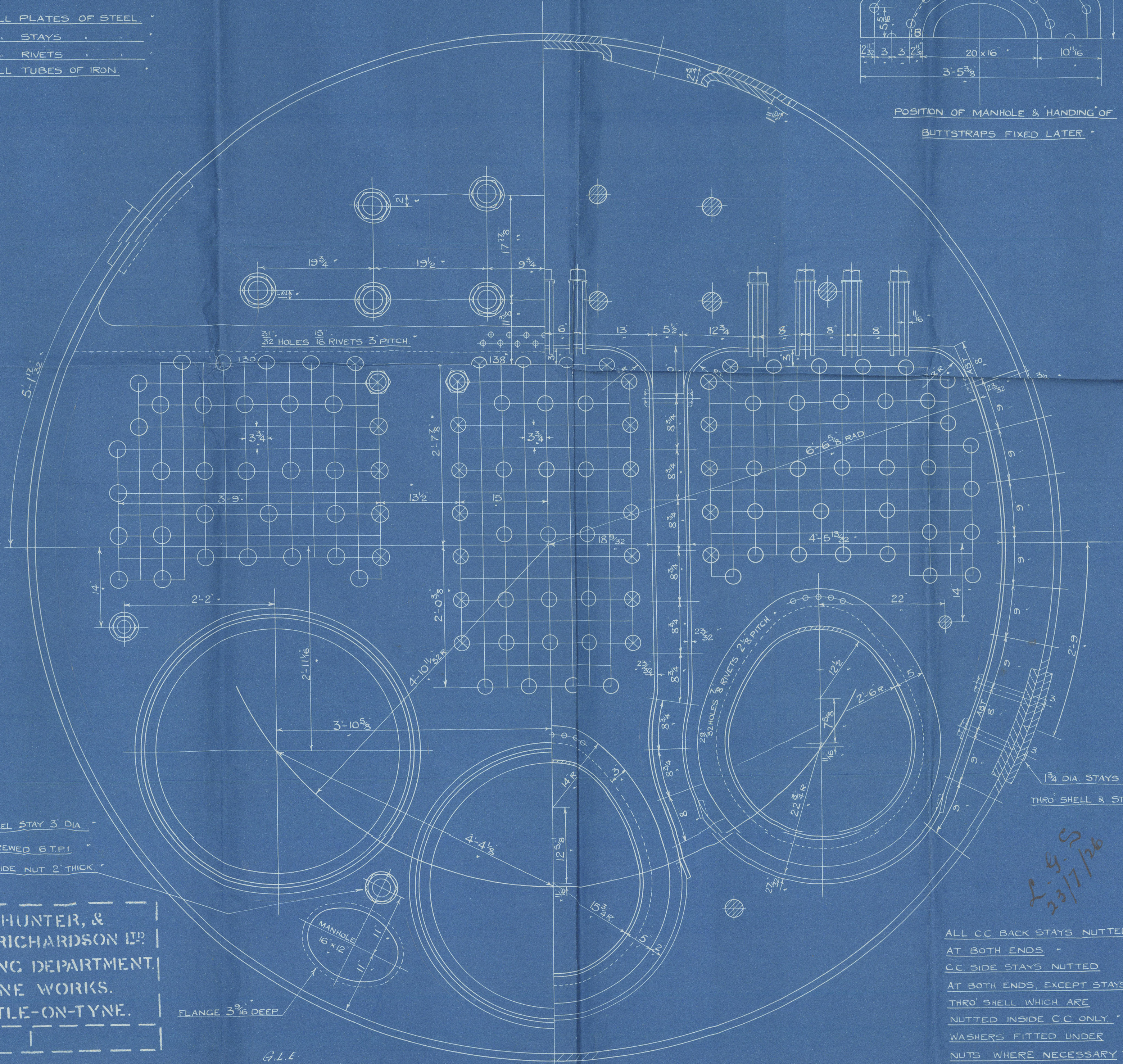


POSITION OF MANHOLE & HANDING OF
BUTTSTRAPS FIXED LATER

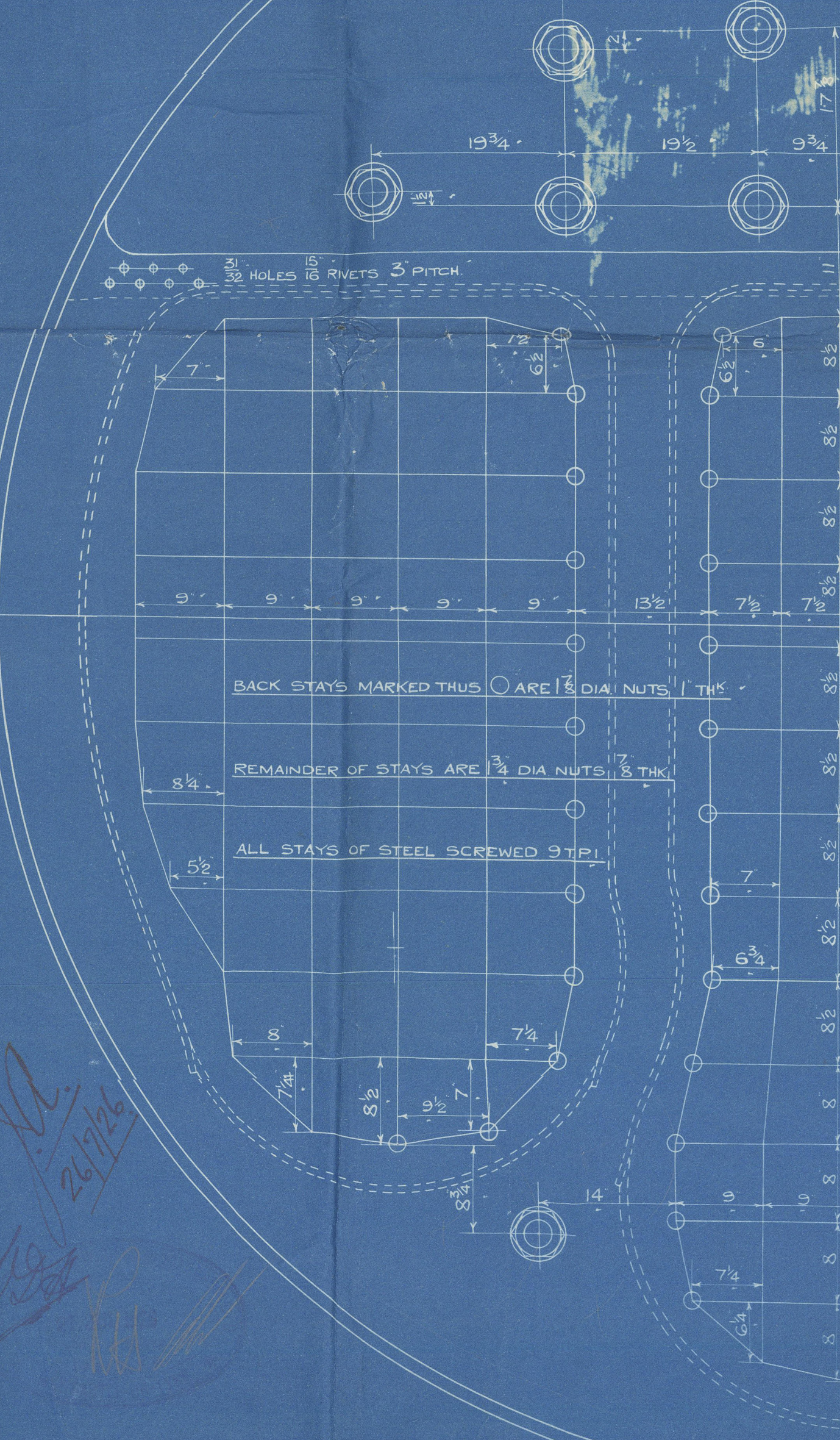


OUTER BUTTSTRAP = 1 1/2 THK
INNER = 1 5/8 THK

PLATE = 84.61%
RIVET = 88.86%
COMBINED = 87.00%



INSIDE NUT ON STAYS MARKED THUS X TO
BE SLOTTED TO TAKE AEGIS NUT PROTECTORS



BACK STAYS MARKED THUS O ARE 1 1/2 DIA NUTS 1 THK
REMAINDER OF STAYS ARE 1 3/4 DIA NUTS 3 THK
ALL STAYS OF STEEL SCREWED 9 T.P.I.

SWAN, HUNTER, &
WIGHAM RICHARDSON LTD
ENGINEERING DEPARTMENT
NEPTUNE WORKS.
NEWCASTLE-ON-TYNE.

DATE

B. 529

G.L.L.
E.W.B. 1140
114
21.7.26.

ALL CC BACK STAYS NUTTED
AT BOTH ENDS
CC SIDE STAYS NUTTED
AT BOTH ENDS, EXCEPT STAYS
THRO' SHELL WHICH ARE
NUTTED INSIDE CC ONLY
WASHERS FITTED UNDER
NUTS WHERE NECESSARY

3 OFF.
MAIN BOILERS.

No 1230

ENCLOSURE
No 771

Lloyd's Register
Foundation

SCALE 1" = 1'00"

3. Main Boilers
S. H. & W. R.

1230 Sugres

to p. 215th

Test-p. 373th

Submitted to London 23/7/26

S. S. Juna
NEWCASTLE ON TYNE.

Report No. 81484.

W48-0157



© 2020

Lloyd's Register
Foundation