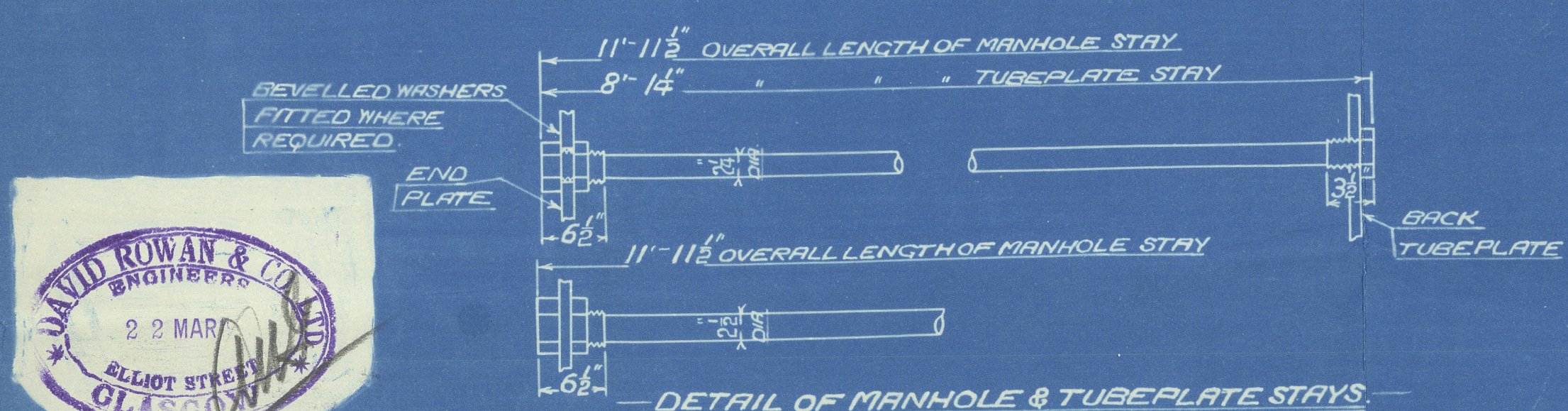
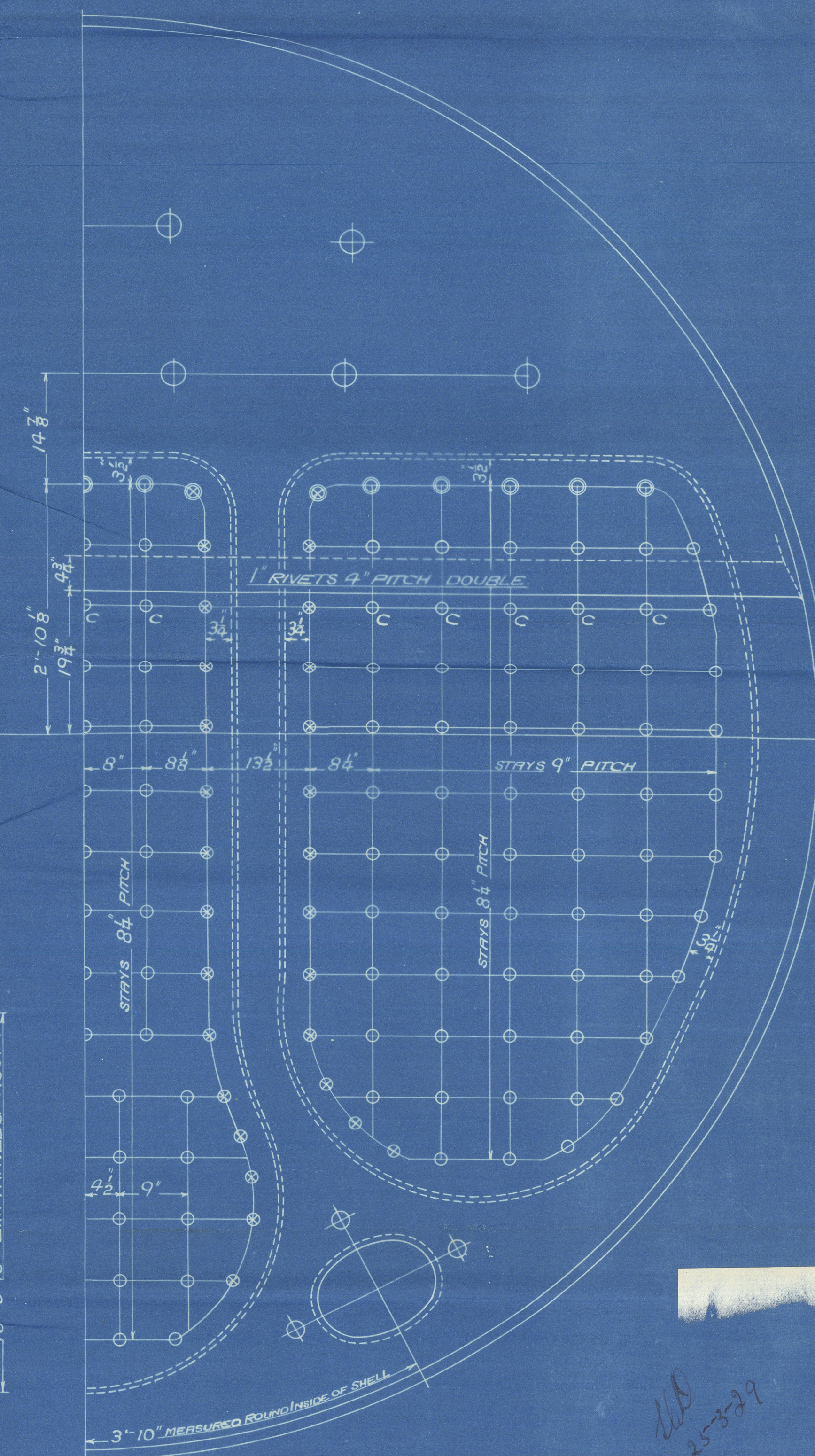
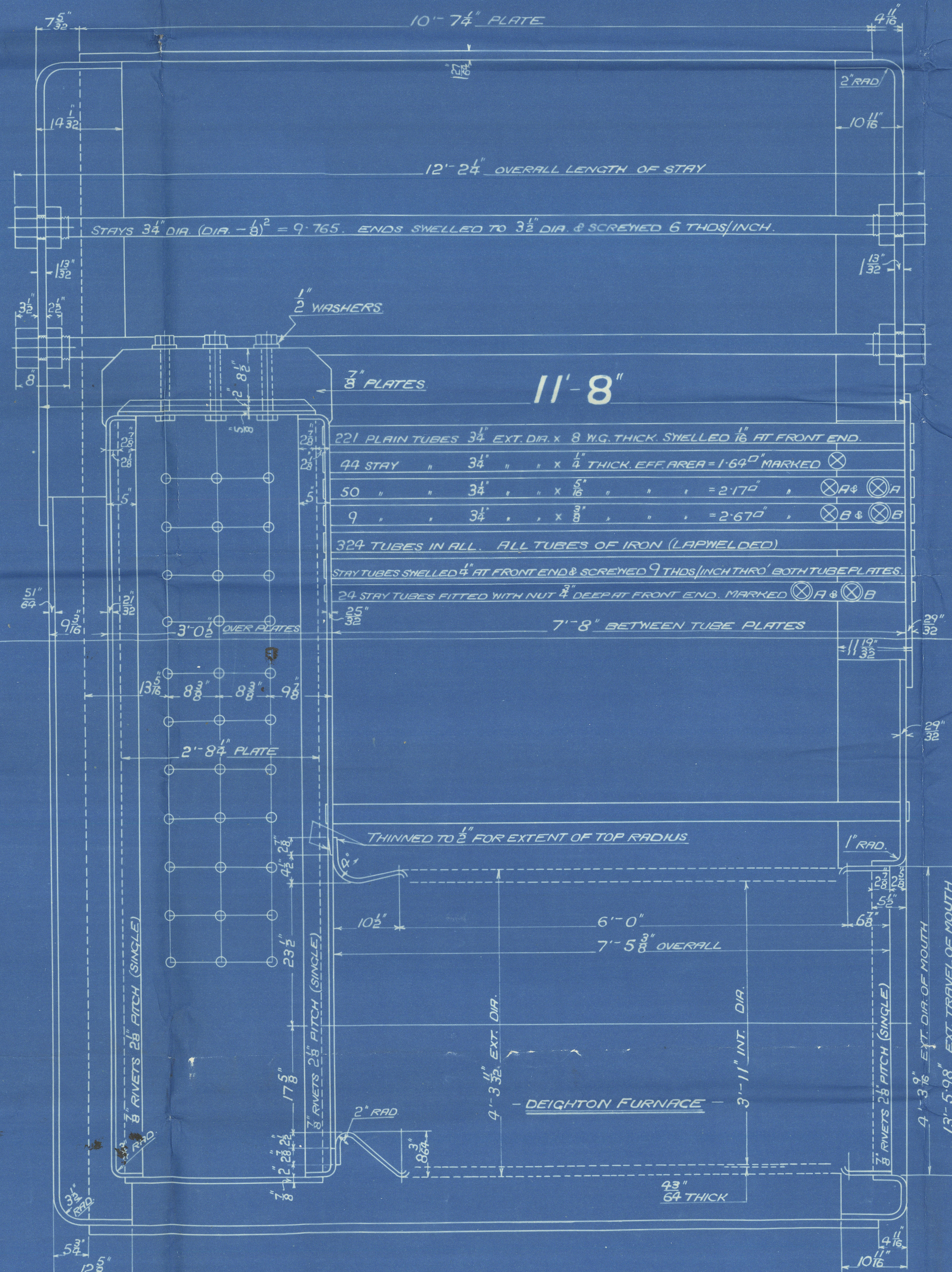
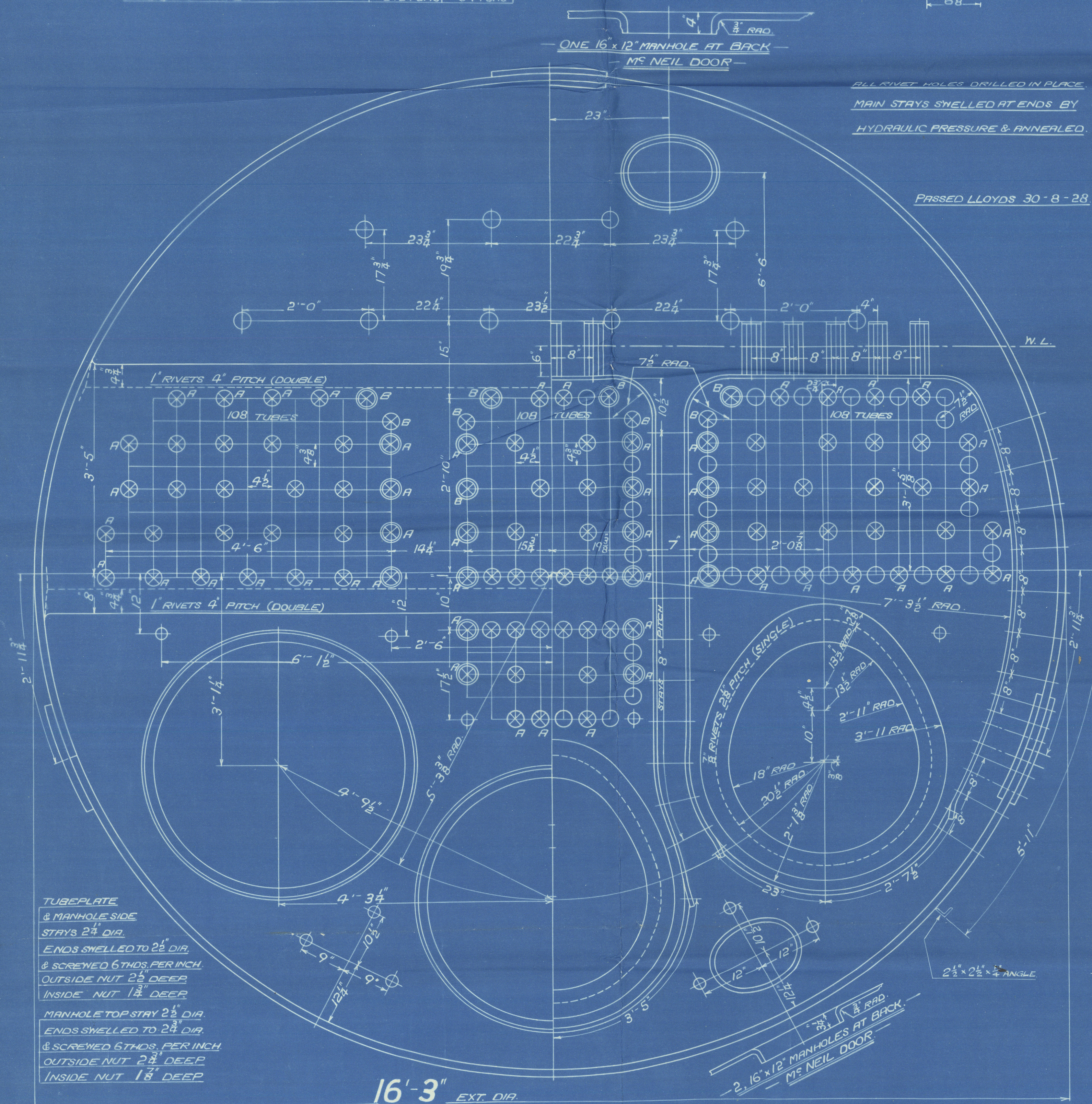
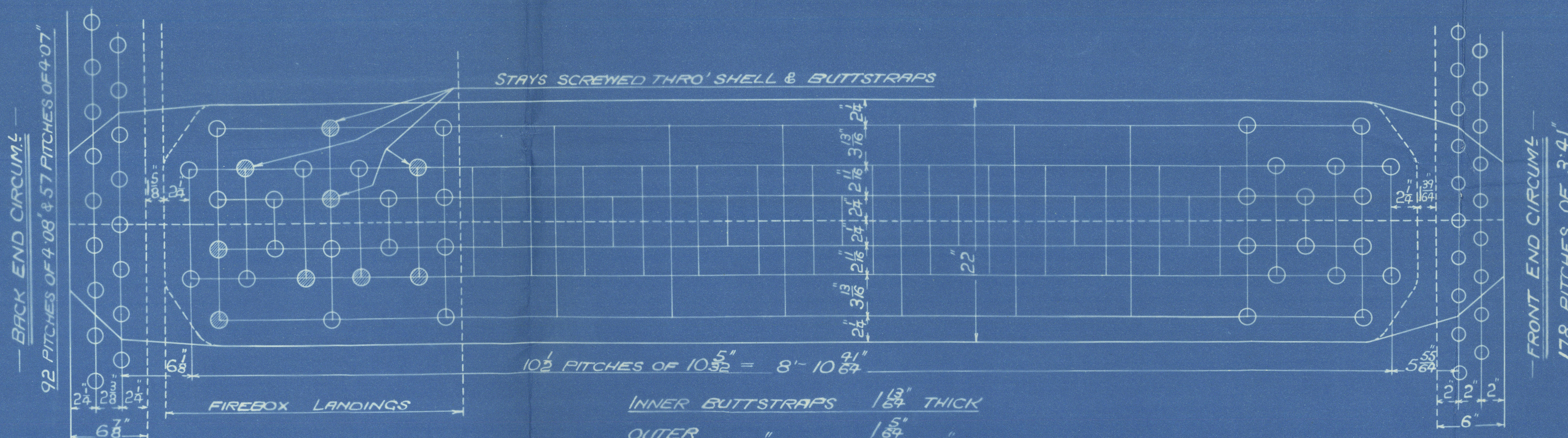


SURFACES		ONE BOILER	2 BOILERS
TUBES		2106	4212
FIREBOX TOP AND SIDES		169	338
" BACK		98	196
" TUBEPLATE		58	116
FURNACES		164	328
TOTAL HEATING SURFACE		2595	5190
GRATE AREA (5'-6" BARS)		648	1296
TUBE AREA		14.33	28.66
WATER		162	324
STEAM SPACE		498	996
GRATE AREA : HEATING SURFACE		1 : 40.15	
" : TUBE		1 : 32.58	
" : WATER		4.5 : 1	
" : STEAM SPACE		1 : 2.5	
" : WATER		1 : 7.7	
% BOILER ABOVE FIREBOX		30.2	
WEIGHT OF WATER		29 1/2 TONS	59 TONS

RIVETING		
	LONG	BACK END CIRCUM L
RIVET HOLE DIA	1 1/2	1 1/2
PITCH	10 3/8	4.08
% PLATE	85.22	63.2
% RIVET	90.7	48.4
% COMBINED	88.6	

LIMITS OF TENSILE STRENGTH & MATERIAL	
SHELL & BUTTSTRAPS	27 TO 33 TONS
GIRDERS	28 " 32 "
OTHER PLATES	26 " 30 "
FURNACES	26 " 30 "
MAIN STAYS	28 " 32 "
SCREWED STAYS	26 " 30 "
RIVET BARS	26 " 30 "



MAIN BOILER
 2-OFF - EACH CONT. NO.
CON. NO. 898-912
 WORKING PRESSURE 200 LBS PER SQUARE INCH
 TEST " 350 "
 TO PASS LLOYDS SURVEY
 SCALES, 1" & 1 1/2" = ONE FOOT

FIREBOX STAYS - STEEL				
POSITION	MARK	DIA	PA-267	SCREWED THOS/INCH
BACK, TOP & SIDES	○	1 1/8"	1-894	9
" WIDE SPACE	○	1 1/8"	2-199	9
" TOP ROW	○	1 1/8"	2-585	9
" CORNER	○	2"	3-003	9

ALL FIREBOX STAYS SCREWED THRO' BOTH PLATES & NUT FITTED AT EACH END EXCEPT STAYS FROM WING FIREBOX TO SHELL & STAYS MARKED 'C' IN BACK BOTTOM END WHICH PROJECT 8" & ARE CAULKED. ALL 1 1/8" & 1 1/2" NUTS 8" DEEP EXCEPT ON GIRDER TOPS WHERE THE OUTSIDE NUTS ARE 1 1/8" DEEP. ALL 1 1/8" & 2" NUTS 1" DEEP.



O.T. 34534
 TRACED 5TH SEPTEMBER 1928

GLASGOW

DAVID ROWAN & CO. LTD

(2) MAIN BOILERS N° 912

WP-200LBS

DUPLICATE OF N° 898 APPD
PENYBRYN

BURNTISLAND S.B. CO.

S/S N° 156

N° 18476

LLOYD'S TEST

350LBS

WP-200LBS

J.C.M.

19-10-29

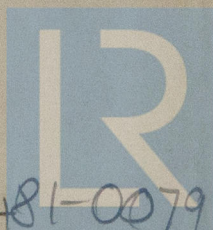
RETAIN

Brynmor

GLASGOW REPORT N° 49823

G

W481-0079



© 2020

Lloyd's Register
Foundation