

28.7.14
19.8.14
3.9.14
17.11.14

S.S. No 263.

MIDSHIP SECTION

DIMENSIONS: 162'-0" x 25'-6" x 12'-0" MLD

CLASS: 100 A1 LLOYDS

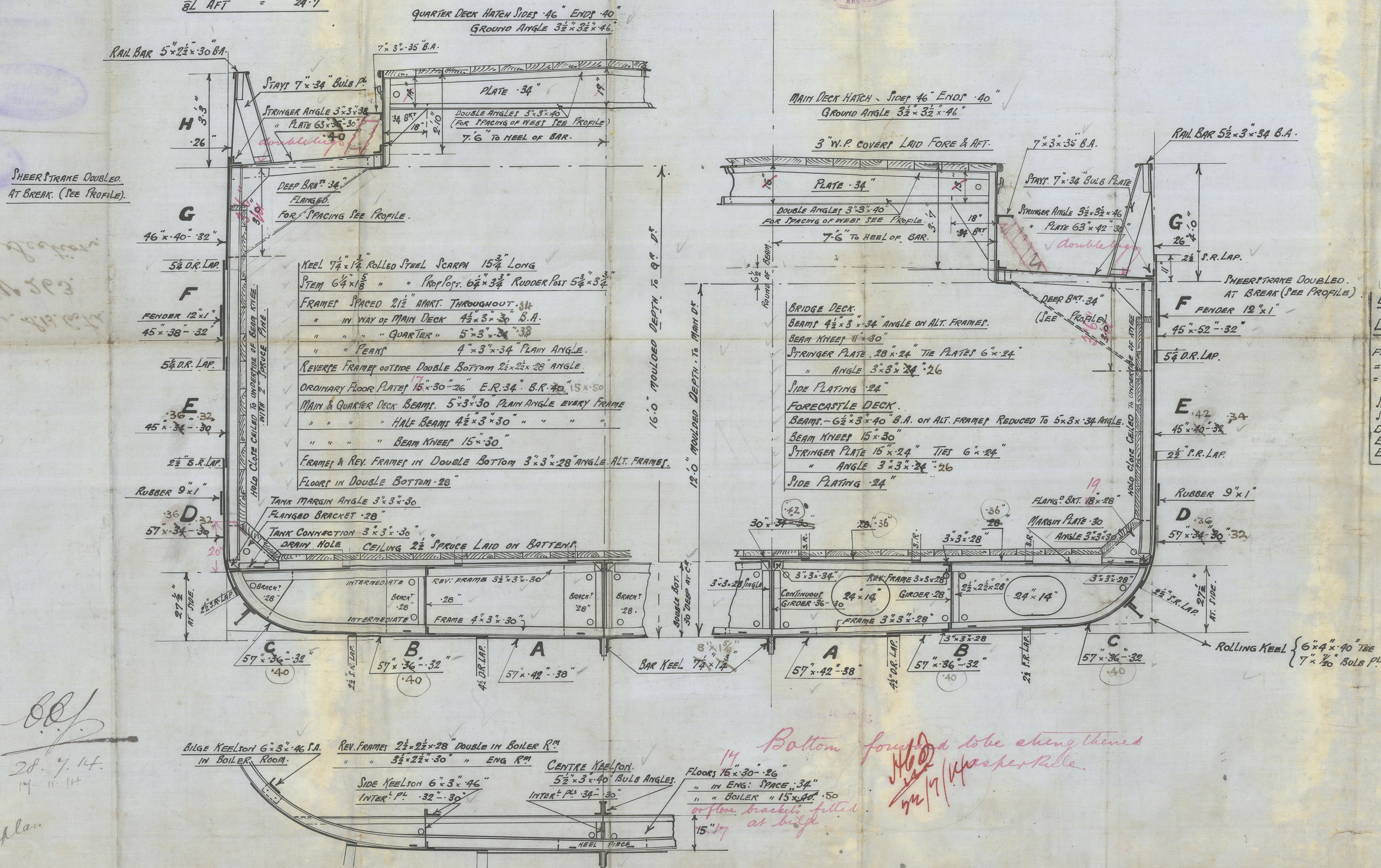
SCALE 1/2" = 1 FOOT.

APPROX: UNDERDECK TONNAGE = 315 TONS.

SHEER: { FORW^d = 72"
AFT. = 45"
1/8 L FORW^d = 39"
1/8 L AFT = 24"

| LLOYDS NUMERALS | |
|--|--------------------------------|
| BREADTH MLD | 25'-6" |
| DEPTH " | 12'-0" |
| TRANSVERSE NUMBER. | 37.5 |
| LENGTH S.P. | 162'-0" |
| LONGITUDINAL NO | 6075.0 |
| d to MAIN DECK. | 9.70 |
| d " Q ^r | 13.7 |
| d " MAIN " | 13.5 |
| d " Q ^r " | 10.12 |
| EQUIPMENT NUMBER. | |
| Longt. No | 6075.0 |
| QUARTER DECK 33.65 x 4 | 374.60 |
| BRIDGE " 12.54 x 7 x 7.5 | 65.83 |
| F.C.E. " 21.75 x 7 x 7.5 | 114.19 |
| E & B. CASING 50.11 x 7 x 50 | 175.88 |
| EQUIPMENT NO | 6805.00 |
| EQUIPMENT. (LETTER A). | |
| 2 BOWER ANCHORS 12 1/2 cwt. (Stock) | Collective Weights 35 1/2 cwt. |
| 1 BOWER ANCHOR 10 1/2 " (") | |
| 1 STREAM ANCHOR 4 " (Ex. Stock) | |
| 1 KEDGE ANCHOR 1 1/4 " (") | |
| 195 FMS. 1 1/2" STUd CHAIN CABLE (Min. Weight 126-1-0) | |
| 60 " 2 1/4" STEEL WIRE | |
| 75 " 2 1/4" " " TONLINE | |
| 90 " 6" HAWSER. | |

| RIVETING TABLE. | |
|--|------|
| BUTTS OF SHEERSTRAKE, STRAKE BELOW & STRINGER PLATES FOR 1/2 L DE. | T.R. |
| BUTTS OF OUTSIDE PLATING FROM KEEL TO UPPER TURN OF BULGE FOR 1/2 L DE. T.R. on Bottoms D.R. | |
| BUTTS OF CENTRE GIRDER IN DOUBLE BOTTOM. | D.R. |
| BUTTS OF OUTSIDE PLATING FROM UPPER TURN OF BULGE TO STRAKE BELOW SHEER. | D.R. |
| BUTTS OF OUTSIDE PLATING FROM KEEL TO UPPER TURN OF BULGE AT ENDS. | D.R. |
| BUTTS OF SHEERSTRAKE, STRAKE BELOW, STRINGER PLATES AT ENDS. | D.R. |
| BUTTS OF TIE PLATES. | D.R. |
| BUTTS OF MARGIN PL ^s & MIDDLE LINE STRAKE DOUBLE BOTTOM FOR 1/2 L DE. | D.R. |
| BUTTS OF DECK PL ^s FOR 1/2 L DE. | D.R. |
| BUTTS OF INNER BOTTOM PLATING FOR 1/2 L DE. | D.R. |
| BUTTS OF MARGIN PLATES, MIDDLE LINE STRAKE IN DOUBLE BOTTOM AT ENDS. | D.R. |
| BUTTS OF DECK PLATES AT ENDS. | S.R. |
| BUTTS OF INNER BOTTOM PLATING AT ENDS. | S.R. |
| Edges of OUTSIDE PLATING FROM KEEL TO UPPER TURN OF BULGE (SHEER D.R.) | S.R. |
| Edges of OUTSIDE PLATING FROM UPPER TURN OF BULGE TO STRAKE BELOW SHEER. | S.R. |
| Edges of SHEERSTRAKE. | D.R. |
| Edges of DECK PLATING. | S.R. |
| Edges of INNER BOTTOM PLATING. | S.R. |



EXTRA STIFFENING IN LIEU OF SIDE STRINGER.

FRAME TO BE INCREASED .04" IN THICKNESS
= MAIN DECK FRAME 4 1/2 x 3 x 34 B.A.
= Q^r " " 5 x 3 x 38 B.A.

SHELL PLATING
STRAKE D & E TO BE INCREASED .02"
D STRAKE = 57" x 36" x 32"
E " = 45" x 42" x 34" IN WAY OF M.D.
E " = 45" x 36" x 32" " " Q^r DE

14 Bottom found to be strengthened
H.D.
17/11/14
or floor brackets fitted
15" at bulk

SECTION IN WAY OF ORDINARY FLOORS.

Midship Section.

RECEIVED
18 AUG 1954

^s/₁₅ Wheatsheaf 2

GLADCOV REPORT No. 35489

W481-0173