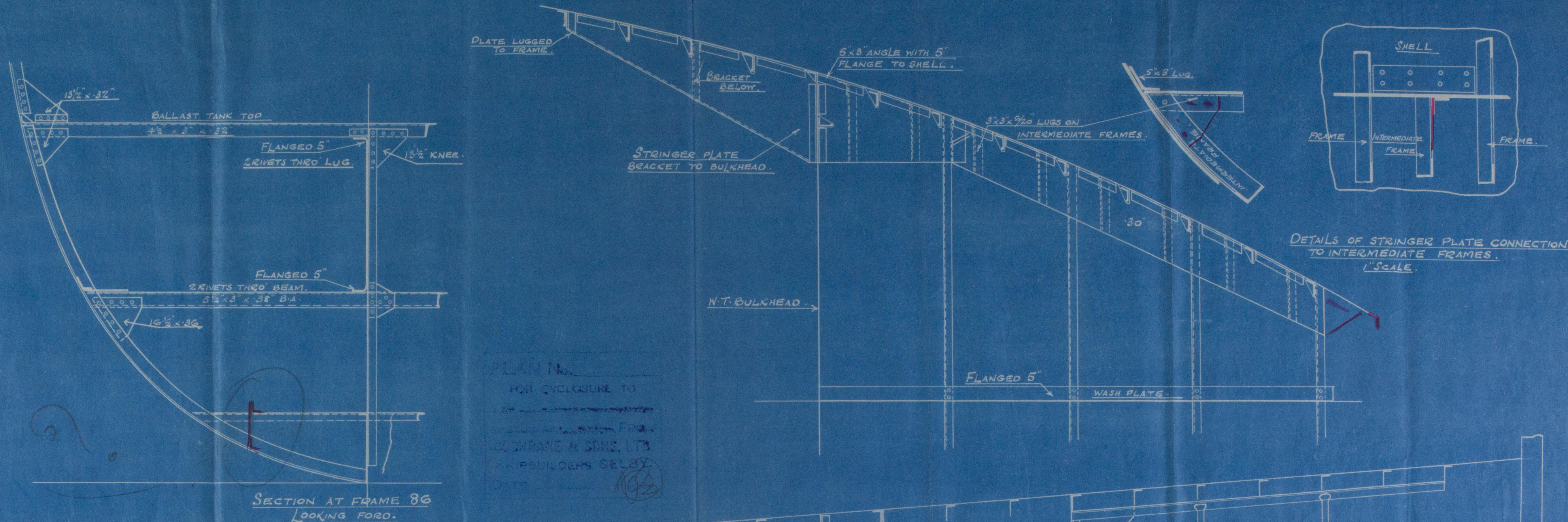


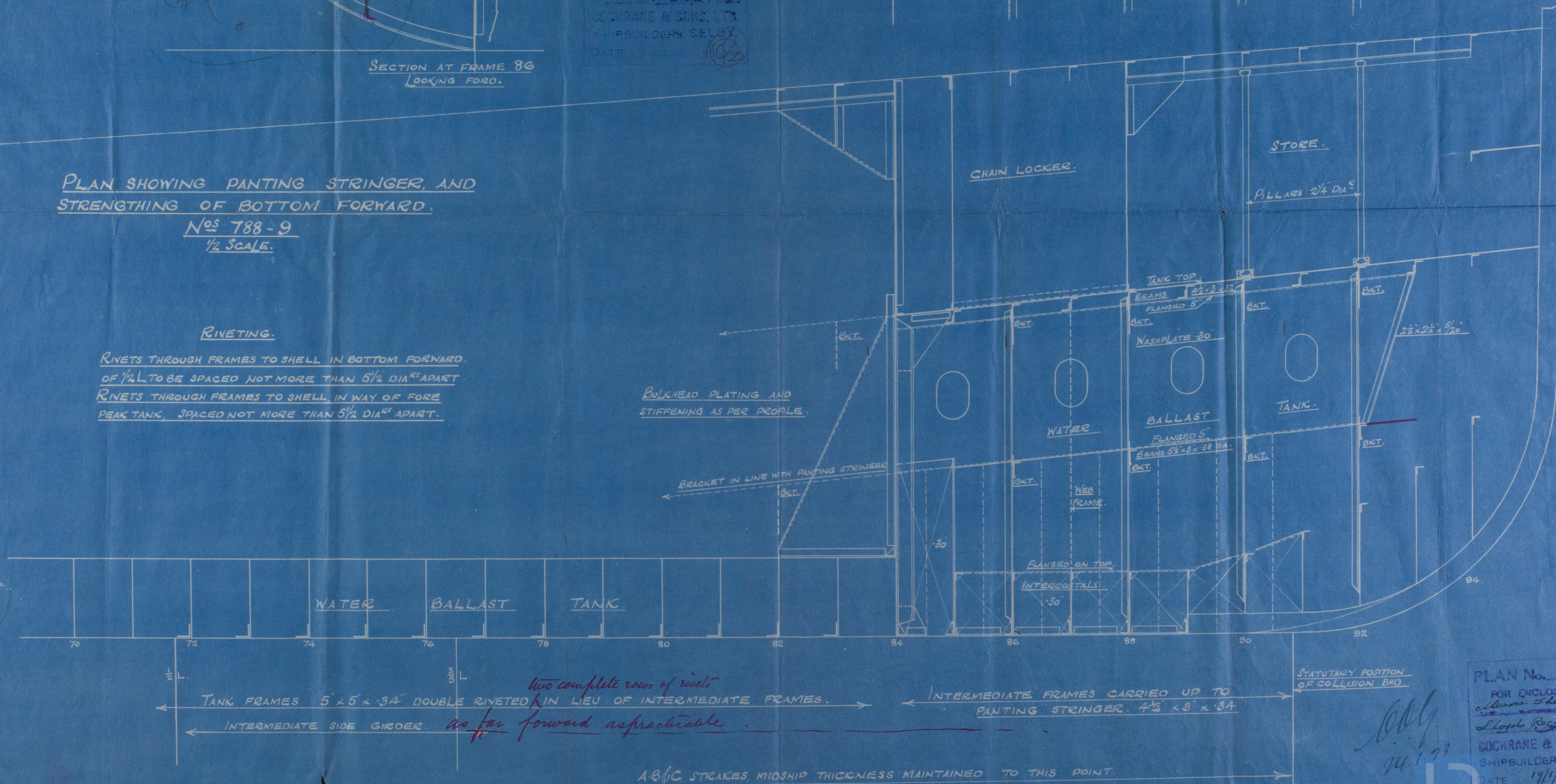
24-1-23



PLAN SHOWING PANTING STRINGER, AND STRENGTHING OF BOTTOM FORWARD.
Nos 788-9
1/2 SCALE.

RIVETING.
RIVETS THROUGH FRAMES TO SHELL IN BOTTOM FORWARD OF 1/2 L TO BE SPACED NOT MORE THAN 5 1/2 DIA^{RS} APART.
RIVETS THROUGH FRAMES TO SHELL IN WAY OF FORE PEAK TANK, SPACED NOT MORE THAN 5 1/2 DIA^{RS} APART.

BULKHEAD PLATING AND STIFFENING AS PER PROFILE.



PLAN No. 788-9
FOR ENCLOSURE TO
Messrs. The Surveyors
Lloyd's Register of Shipping
COCHRANE & SONS, LTD.
SHIPBUILDERS SELBY.
DATE 17/1/23

Plan of Strengthening
of bottom forward

Cochrane: No 488.9.

s/s Malrix Hull Rpt No. 34386
- Lesrix - - - 34905



© 2020

Lloyd's Register
Foundation

W49-0110