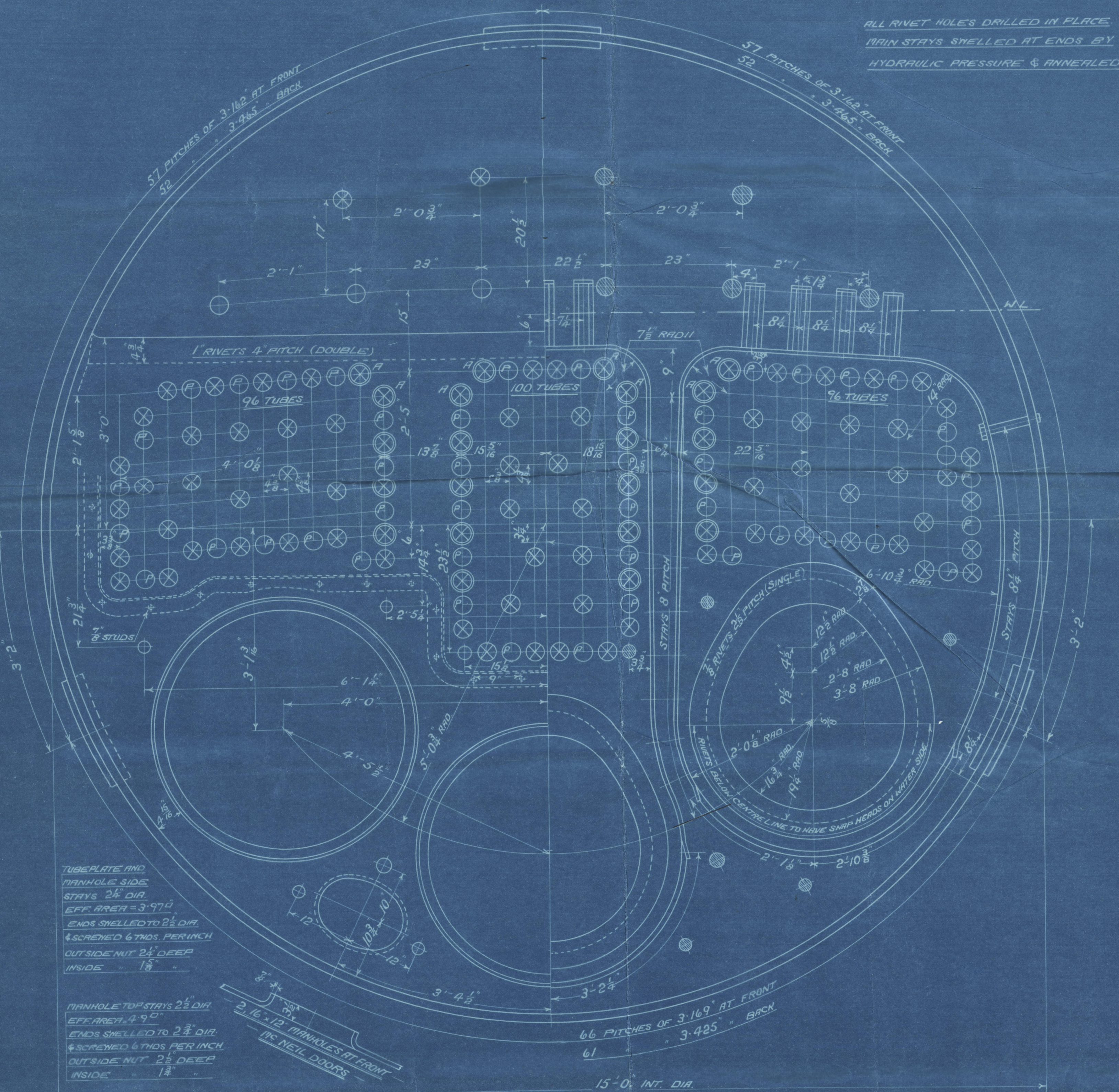


SURFACES	
TUBES	1770
FIREBOX TOP AND SIDES	135
BACK	83
TUBE PLATE	54
FURNACES	153
TOTAL HEATING SURFACE	2195
GRATE AREA (4" 6" BARS)	49.25
TUBE AREA	13.52
WATER	141
STEAM SPACE	425
GRATE AREA : HEATING SURFACE	1 : 44.5
WATER	1 : 36
STEAM SPACE	3 : 64.1
WATER	1 : 2.86
STEAM SPACE	1 : 8.6
% BOILER ABOVE FIREBOX	31.6
WEIGHT OF WATER	24 TONS

RIVETING			
	LONG	BACK END CIRCUMF.	FRONT END CIRCUMF.
RIVET HOLE DIA	1 1/8"	1 1/8"	1 1/8"
PITCH	8 1/2"	3' 4 1/2"	3' 16 9"
% PLATE	85.25	61.7	62.3
% RIVET	LLOYD B.O.T.	LLOYD B.O.T.	LLOYD B.O.T.
	93.2	96.4	55.2
	53.4	48.7	47.4

LIMITS OF TENSILE STRENGTH & MATERIAL		
SHELL, BUTTSTRAPS AND GIRDERS	28 TO 32 TONS	SIEMENS MARTIN STEEL
OTHER PLATES	26 TO 30	
FURNACES	26 TO 30	IRON (NOT TESTED)
MAIN STAYS	28 TO 32	
SCREENED STAYS	26 TO 30 TONS	SIEMENS MARTIN STEEL

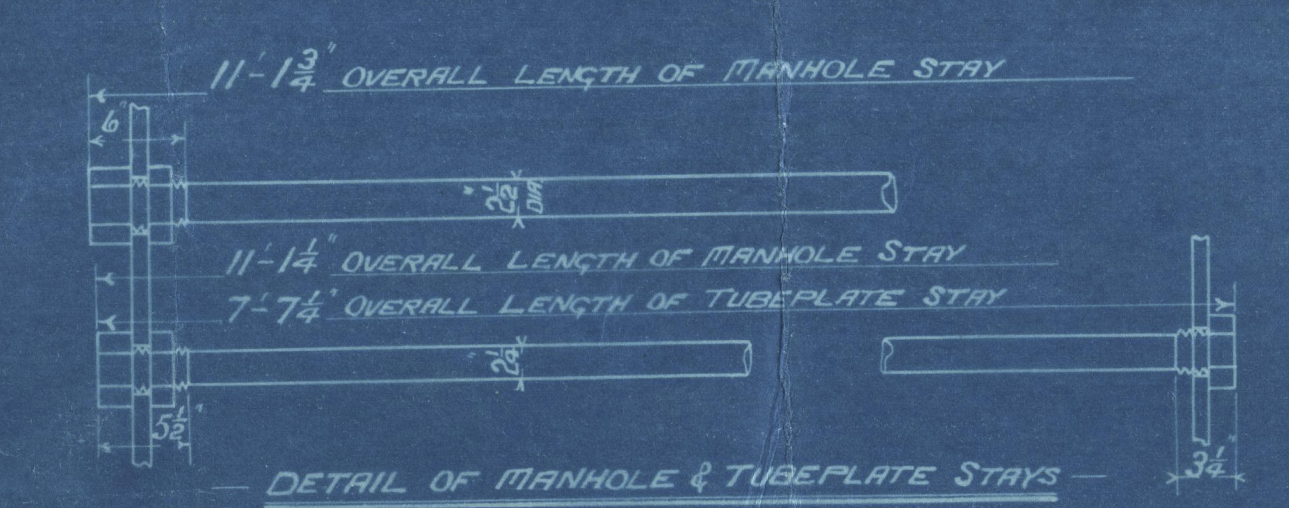
HEATING SURFACE CALCULATED TO 3" BELOW FURNACE CENTRE LINES



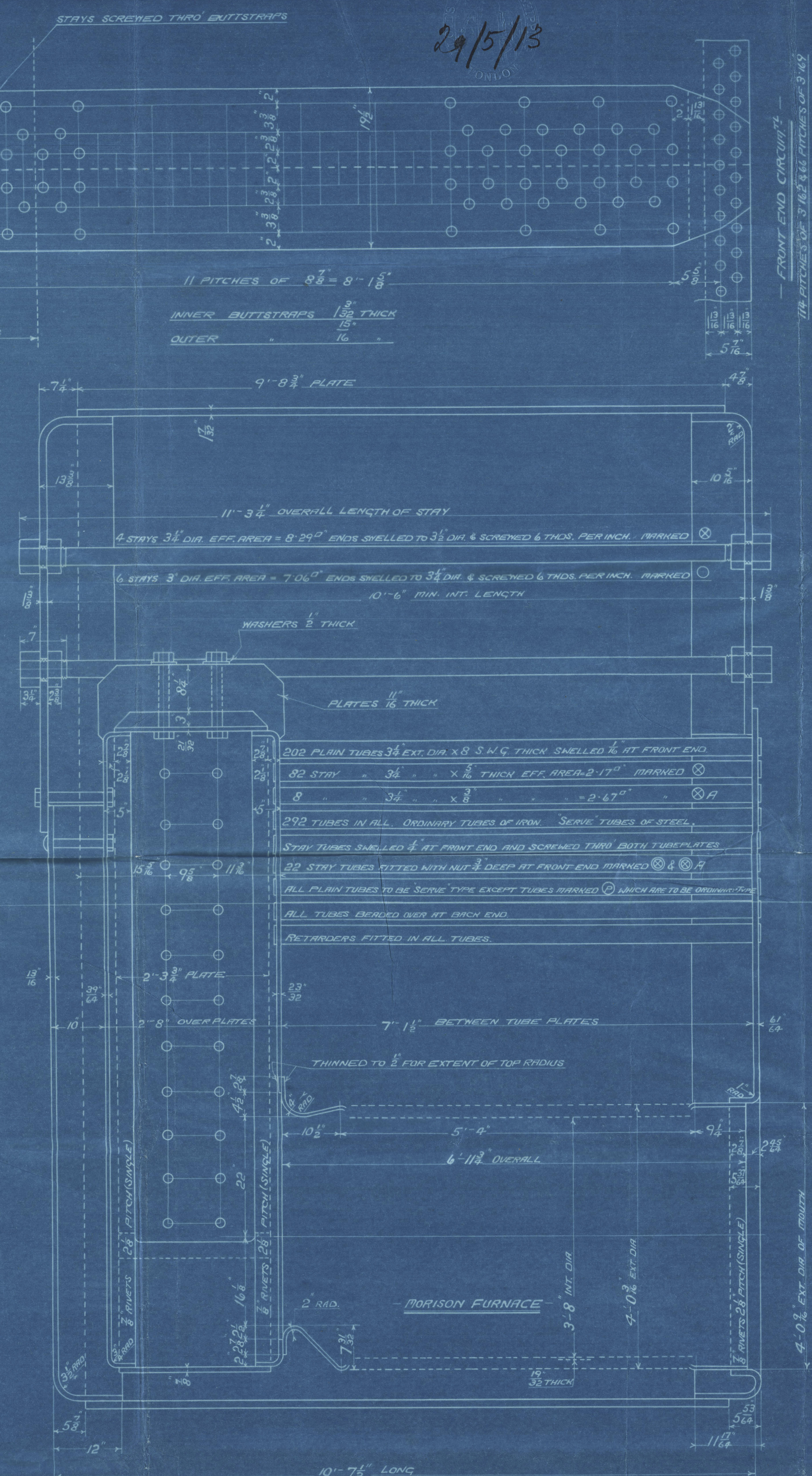
TUBEPLATE AND MANHOLE SIDE STAYS 2 1/2" DIA. EFF. AREA = 3.97 sq. IN. ENDS SHELLED TO 2 1/2" DIA. & SCREENED 6 THDS. PER INCH. OUTSIDE NUT 2 1/2" DEEP. INSIDE 1 1/2" DEEP.

MANHOLE TOP STAYS 2 1/2" DIA. EFF. AREA = 4.9 sq. IN. ENDS SHELLED TO 2 1/2" DIA. & SCREENED 6 THDS. PER INCH. OUTSIDE NUT 2 1/2" DEEP. INSIDE 1 1/2" DEEP.

2 1/2" DIA. MANHOLE AT FRONT OF NEIL DOOR



ALL RIVET HOLES DRILLED IN PLACE. MAIN STAYS SHELLED AT ENDS BY HYDRAULIC PRESSURE & ANNEALED.

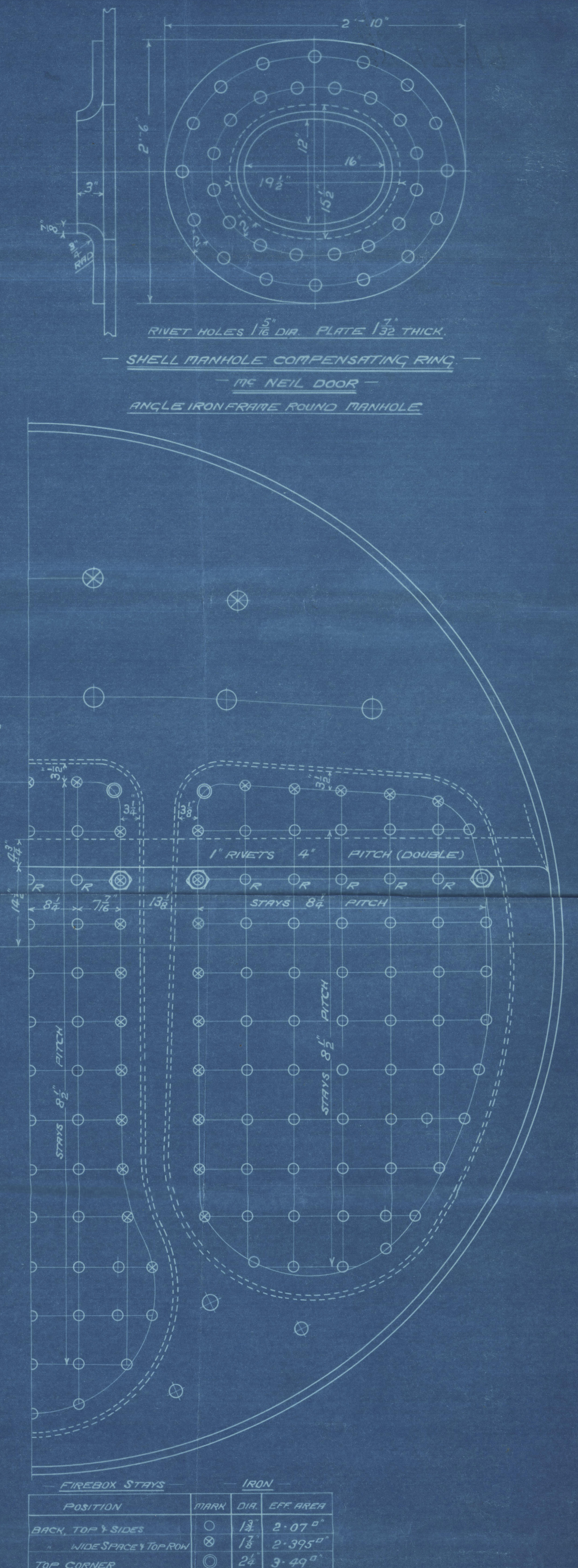


AUXILIARY BOILER
ONE OFF
CONT. NO. 612

TO PASS LLOYD'S SURVEY FOR 160 LBS PER SQ. INCH WORKING PRESSURE
 TO PASS BOARD OF TRADE SURVEY FOR 160 LBS PER SQ. INCH WORKING PRESSURE
 TO HAVE BOARD OF TRADE SPECIAL CERTIFICATE

SCALES: 1" = 1 1/2' = ONE FOOT

29/5/13
 29.5.13



ALL STAYS SCREENED THRO' BOTH PLATES & NUT FITTED AT EACH END EXCEPT STAYS FROM FIREBOX TO SHELL WHICH PROJECT 3" THRO' SHELL & ARE CHAINED & STAYS IN BACK BOTTOM END MARKED R WHICH ARE RIVETED.

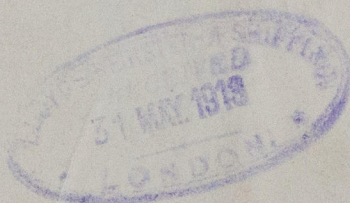
ALL 1 1/2" NUTS 1" DEEP EXCEPT ON GIRDER TOPS WHERE THE OUTSIDE NUTS ARE 1 1/2" DEEP.

ALL 1 1/2" NUTS 1 1/2" DEEP.

ALL 2 1/2" NUTS 1 1/2" DEEP.

17319
 17319
 17319

David Rowan & Co.
Auxiliary Boilers
No. 612.



$\frac{1}{5}$ " Mahanada

GLASGOW REPORT No. 34565.



© 2020

W49-0131

Lloyd's Register
Foundation